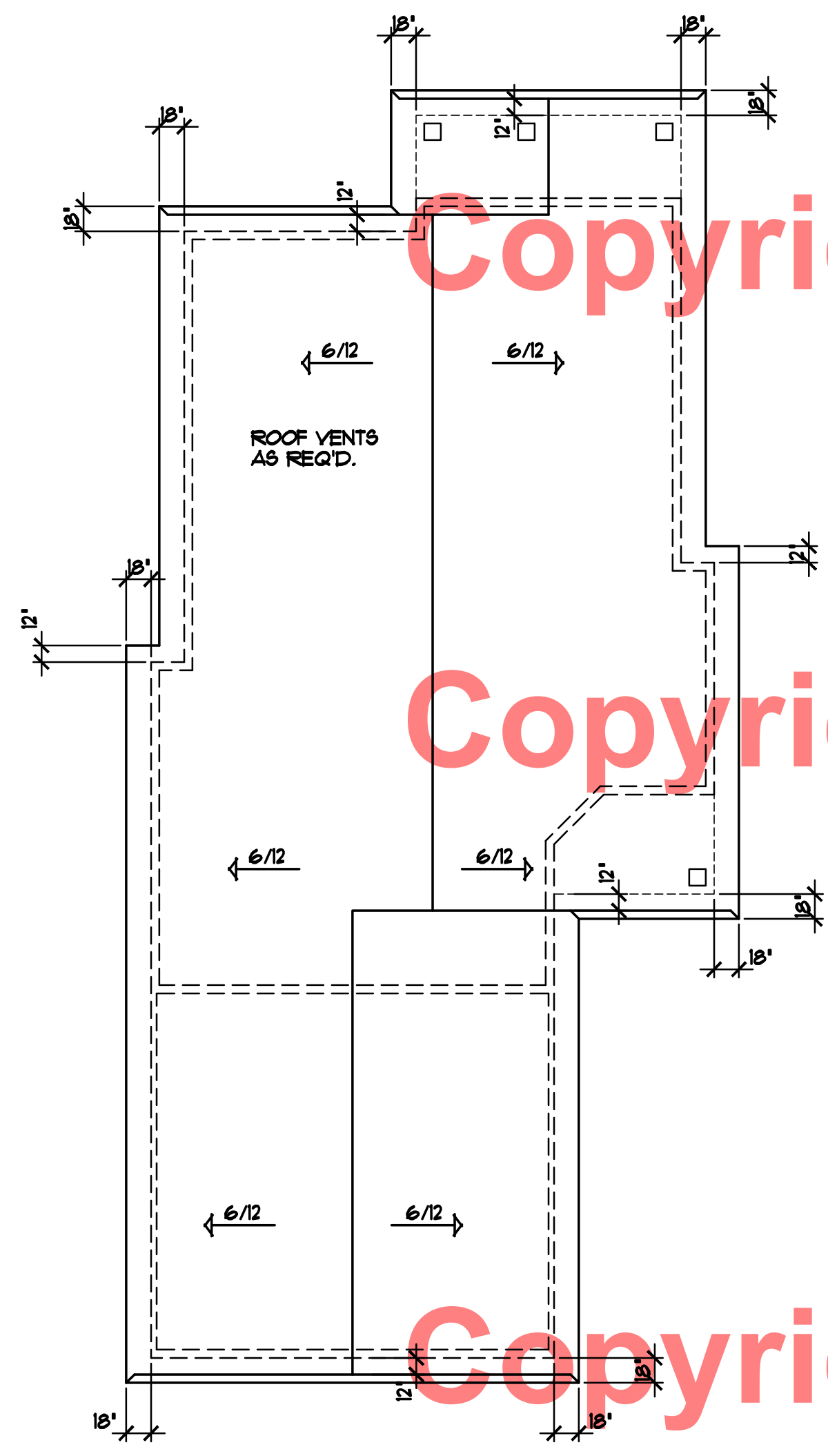


REVISIONS	BY
15226	N.F.
16264	N.F.
17024	N.F.
17289	N.F.

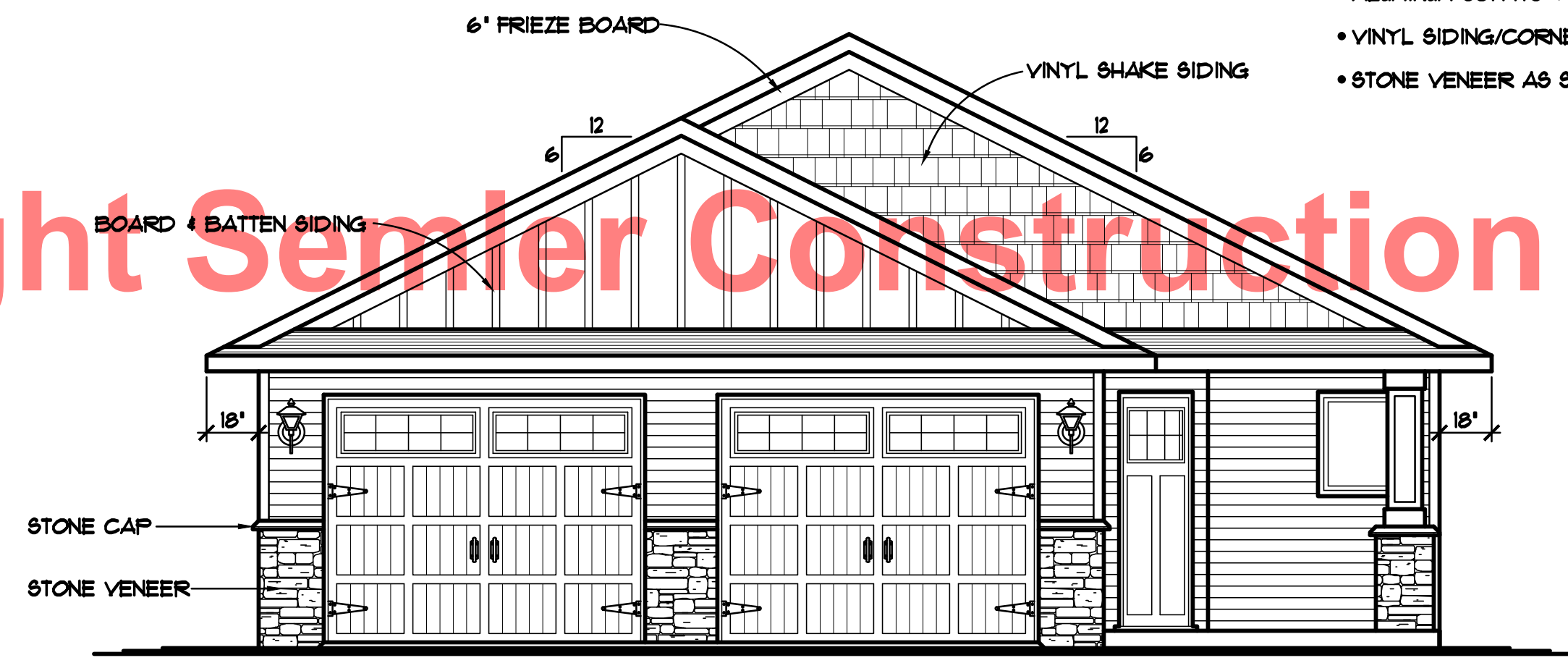
Copyright Semler Construction



STREET ELEVATION 1/4" = 1'-0"



BIRD'S-EYE ROOF PLAN 1/8" = 1'-0"



ALLEY ELEVATION 1/4" = 1'-0"

1341 SQ. FT. MAIN LEVEL  
46 SQ. FT. MECH. RM. NOT INCLUDED

THE: **CAMBRIDGE MODEL**  
1206 GARLAND STREET  
LOT 6, BLOCK 1, HERITAGE GREENS OF CAMBRIDGE  
CAMBRIDGE, MN

- VECTOR WINDOWS SPEC'D, VERIFY ALL DOOR AND WINDOW ROUGH OPENINGS WITH SUPPLIER
- ALUMINUM SOFFITS & FASCIA
- VINYL SIDING/CORNER TRIM
- STONE VENEER AS SHOWN

**SPECIAL NOTICE:**  
CROIX DESIGN AND DRAFTING, INC. ACCEPTS NO RESPONSIBILITY FOR ERRORS AND/OR OMISSIONS. THESE DRAWINGS ARE DESIGN CONCEPT ONLY. EVERY EFFORT HAS BEEN MADE TO DESIGN ACCURATELY. THE OWNER, GENERAL CONTRACTOR, SUB-CONTRACTORS, AND SUPPLIERS MUST CHECK ALL DETAILS AND DIMENSIONS AND BE RESPONSIBLE FOR ANY CHANGES OR ADJUSTMENTS REQUIRED DURING ACTUAL CONSTRUCTION. NO REPRESENTATION IS MADE OR IMPLIED FOR ACCURACY.

**COPYRIGHT NOTICE, ALL RIGHTS RESERVED**  
THESE ARCHITECTURAL PLANS AND ALL RELATED WORKS ARE PROTECTED BY UNITED STATES COPYRIGHT LAWS, AND THAT NOT IN ANY MANNER WITH OUT THE EXPRESS WRITTEN PERMISSION OF CROIX DESIGN AND DRAFTING, INC.

DESIGN and DRAFTING BY:

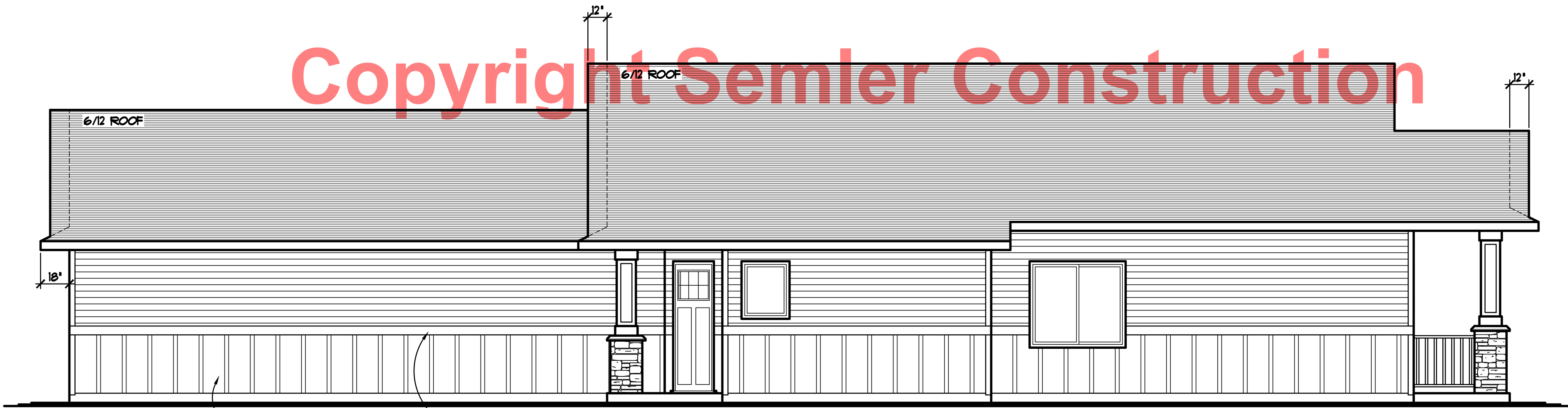
ARCHITECTURAL DESIGN and DRAFTING SERVICE • HOME PLAN SERVICE • CUSTOM HOMES • REMODELING • PHONE: 763.757.5997 • ANDOVER, MINNESOTA • WWW.CROIXDESIGN.COM

BUILT BY:

1005 STATION PARKWAY NW ANDOVER, MN 55304  
LIC. # 3649  
163-154-5578

DRAWN	N.F.
CHECKED	XX
DATE	10/05/2011
SCALE	AS NOTED
CADD FILE #	17359

REVISIONS
XXXXXX 0000 BY:XX
XXXXXX 0000 BY:XX



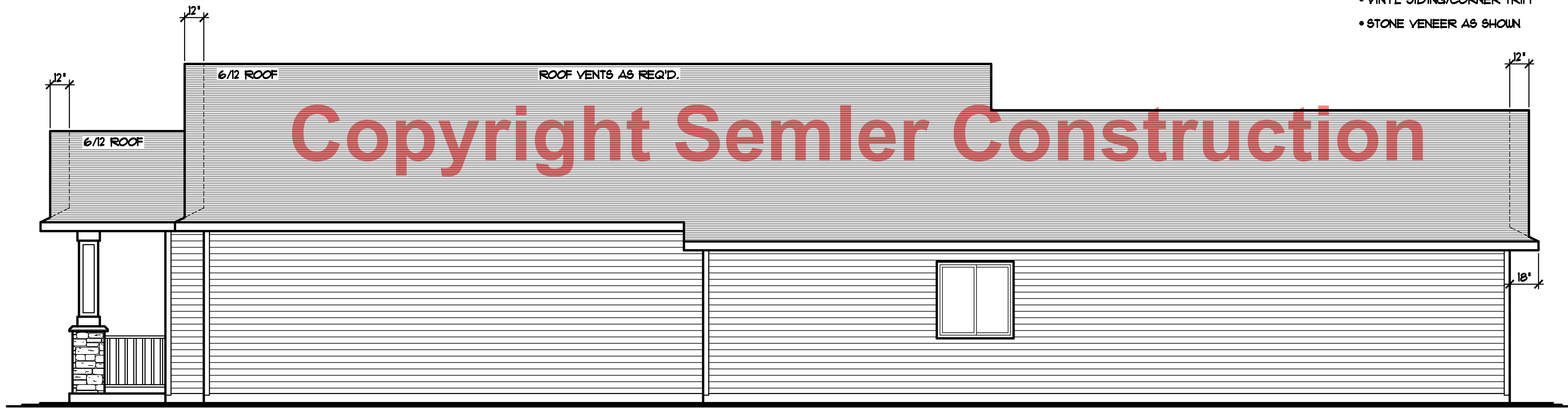
BOARD & BATTEN SIDING  
2x6 TRIM BOARD

**RIGHT ELEVATION** 1/4"=1'-0"

Copyright Semler Construction

**SPECIAL NOTICE:**  
CROIX DESIGN AND DRAFTING, INC. ACCEPTS NO RESPONSIBILITY FOR ERRORS AND/OR OMISSIONS. THESE DRAWINGS ARE DESIGN CONCEPT ONLY. EVERY EFFORT HAS BEEN MADE TO PRESENT AN ACCURATE REPRESENTATION OF THE DESIGN. THE CONTRACTOR SHALL VERIFY ALL DIMENSIONS AND CONDITIONS BEFORE CONSTRUCTION. THE CONTRACTOR SHALL BE RESPONSIBLE FOR ANY CHANGES OR ADJUSTMENTS REQUIRED DURING CONSTRUCTION. NO REPRESENTATION IS MADE OR IMPLIED FOR ACCURACY.

- VECTOR WINDOWS SPEC'D. VERIFY ALL DOOR AND WINDOW ROUGH OPENINGS WITH SUPPLIER
- ALUMINUM SOFFITS & FASCIA
- VINYL SIDING/CORNER TRIM
- STONE VENEER AS SHOWN



**LEFT ELEVATION** 1/4"=1'-0"

Copyright Semler Construction

OFFICE: 763.757.5997  
FAX: 763.757.4383  
ANDOVER, MINNESOTA  
WWW.CROIXDESIGN.COM



BUILT BY:  
**SEMLER HOMES**

SHEET  
**2**  
OF 6  
CADD FILE #  
11359



Copyright Semler Construction

WINDOW and DOOR PERFORMANCE DATA  
U-VALUE / SHGC

- ① GLIDER UNIT  
U-VALUE = 0.30  
SHGC = 0.34
- ② CASEMENT UNIT  
U-VALUE = 0.29  
SHGC = 0.30

REVISIONS
XXXXXX 0000 BY:XX
XXXXXX 0000 BY:XX

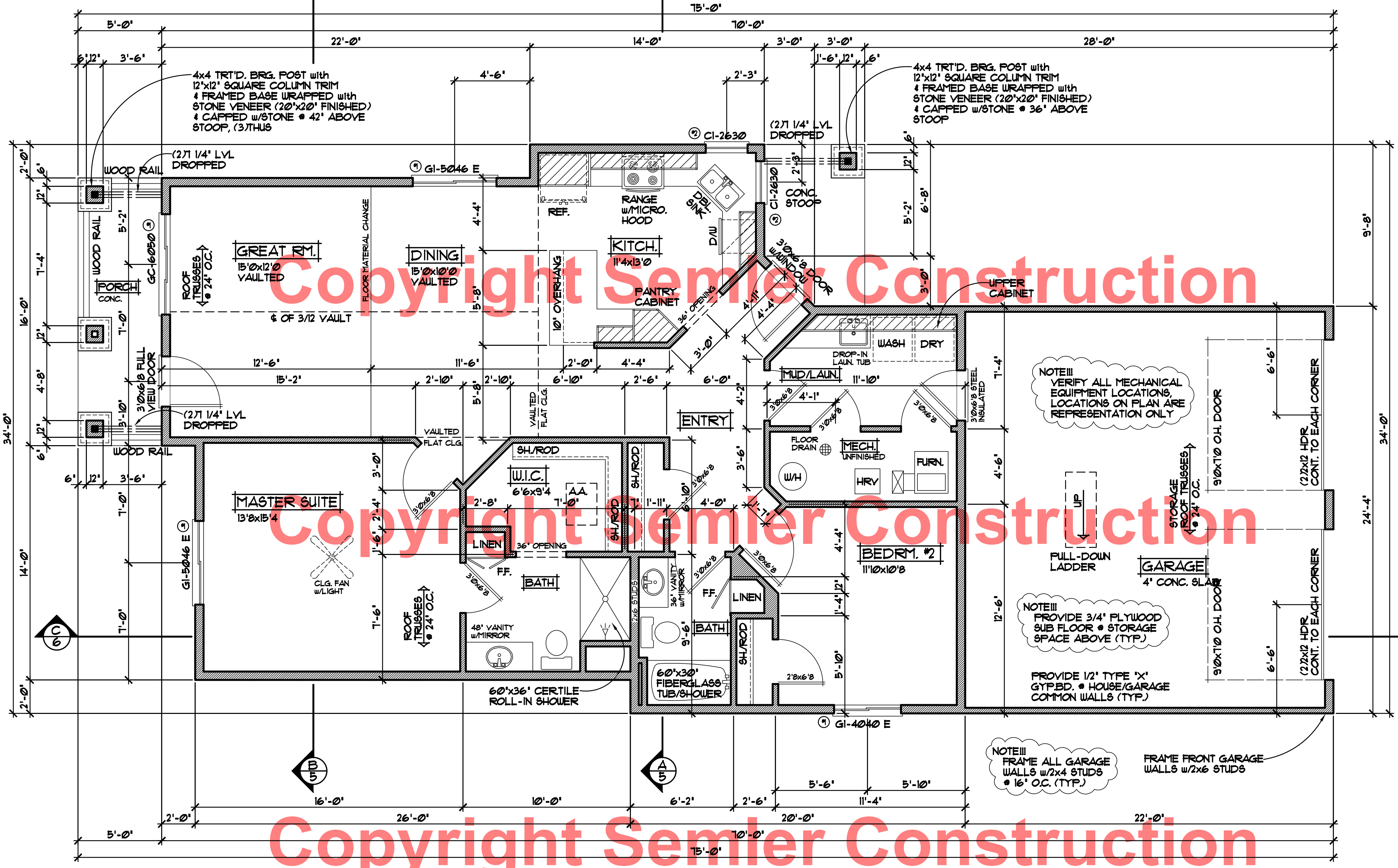
**SPECIAL NOTICE:**  
CROIX DESIGN AND DRAFTING, INC. ACCEPTS NO RESPONSIBILITY FOR ERRORS AND/OR OMISSIONS. THESE DRAWINGS ARE DESIGN CONCEPT ONLY. EVERY EFFORT HAS BEEN MADE TO PREVENT ERRORS AND OMISSIONS. THE USER OF THESE DRAWINGS SHALL BE RESPONSIBLE FOR VERIFYING ALL DIMENSIONS AND BEING RESPONSIBLE FOR ANY CHANGES OR ADJUSTMENTS REQUIRED DURING CONSTRUCTION. NO REPRESENTATION IS MADE OR IMPLIED FOR ACCURACY.

OFFICE: 763.757.5997  
FAX: 763.757.4383  
ANDOVER, MINNESOTA  
WWW.CROIXDESIGN.COM

**CROIX**  
DESIGN & DRAFTING, INC.

BUILT BY:  
**SEMLER HOMES**

SHEET  
**4**  
of 6  
CADD FILE #  
17359



**MAIN LEVEL FLOOR PLAN** 1/4"=1'-0"  
1347 SQ. FT. (46 SQ. FT. MECH. RM. NOT INCLUDED)

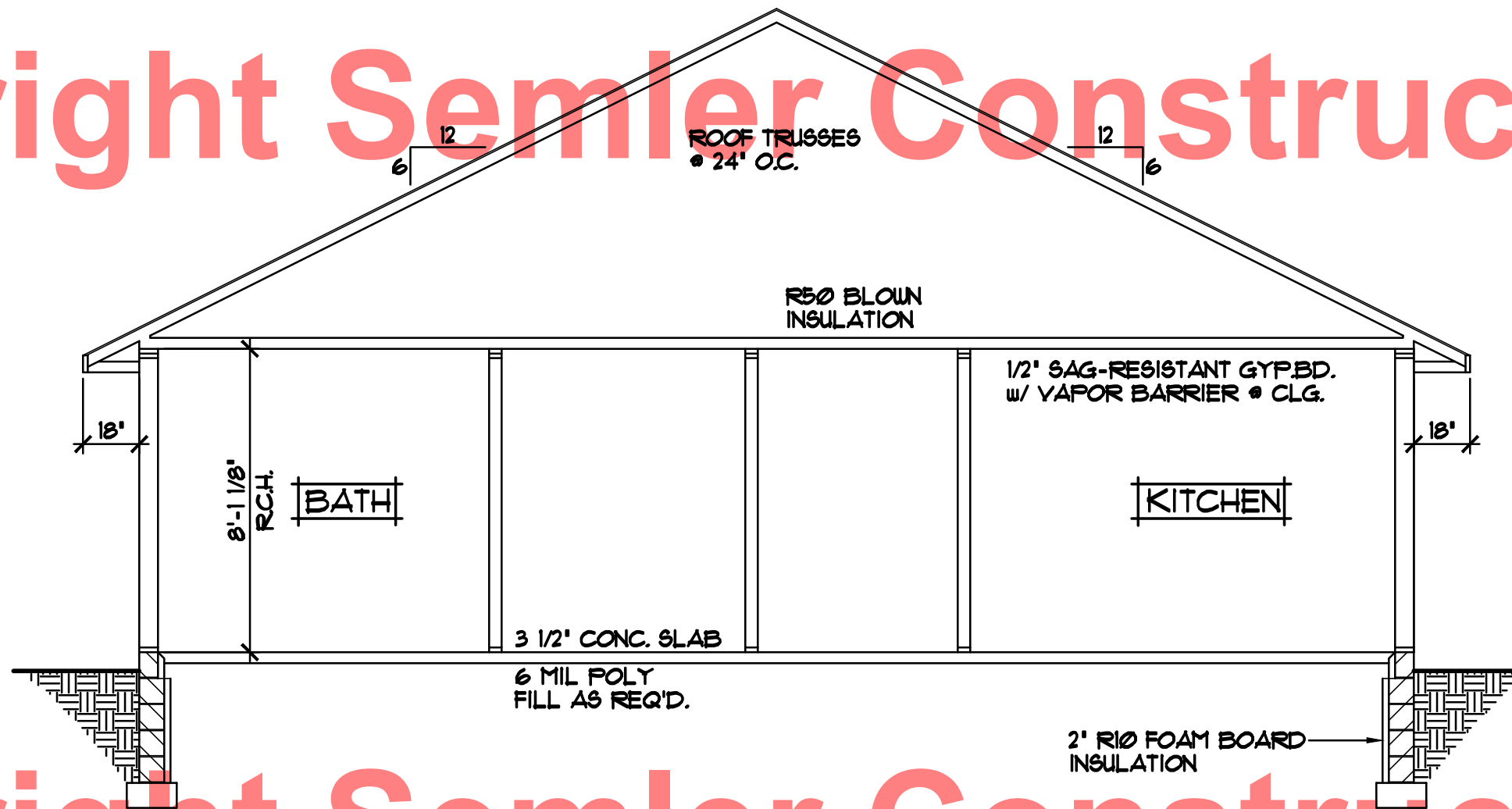
**NOTE III**  
8'-1 1/8" PLATE HEIGHT @ ENTIRE MAIN LEVEL (UNO.)

**NOTE III**  
TOP OF RO. FOR ALL WINDOWS TO BE 6'-10 1/2" FROM TOP OF CONC. BLK.

**NOTE III**  
ALL WDW/DOOR OPENINGS TO HAVE (2)2x10 #2 GRADE HDR. or BETTER (UNO.)

**NOTE III**  
VECTOR VINYL WINDOWS SPECIFIED. VERIFY ALL DOOR & WINDOW ROUGH OPENINGS w/SUPPLIER (\* INDICATES SASH LIMITER REQUIRED)

Copyright Semler Construct



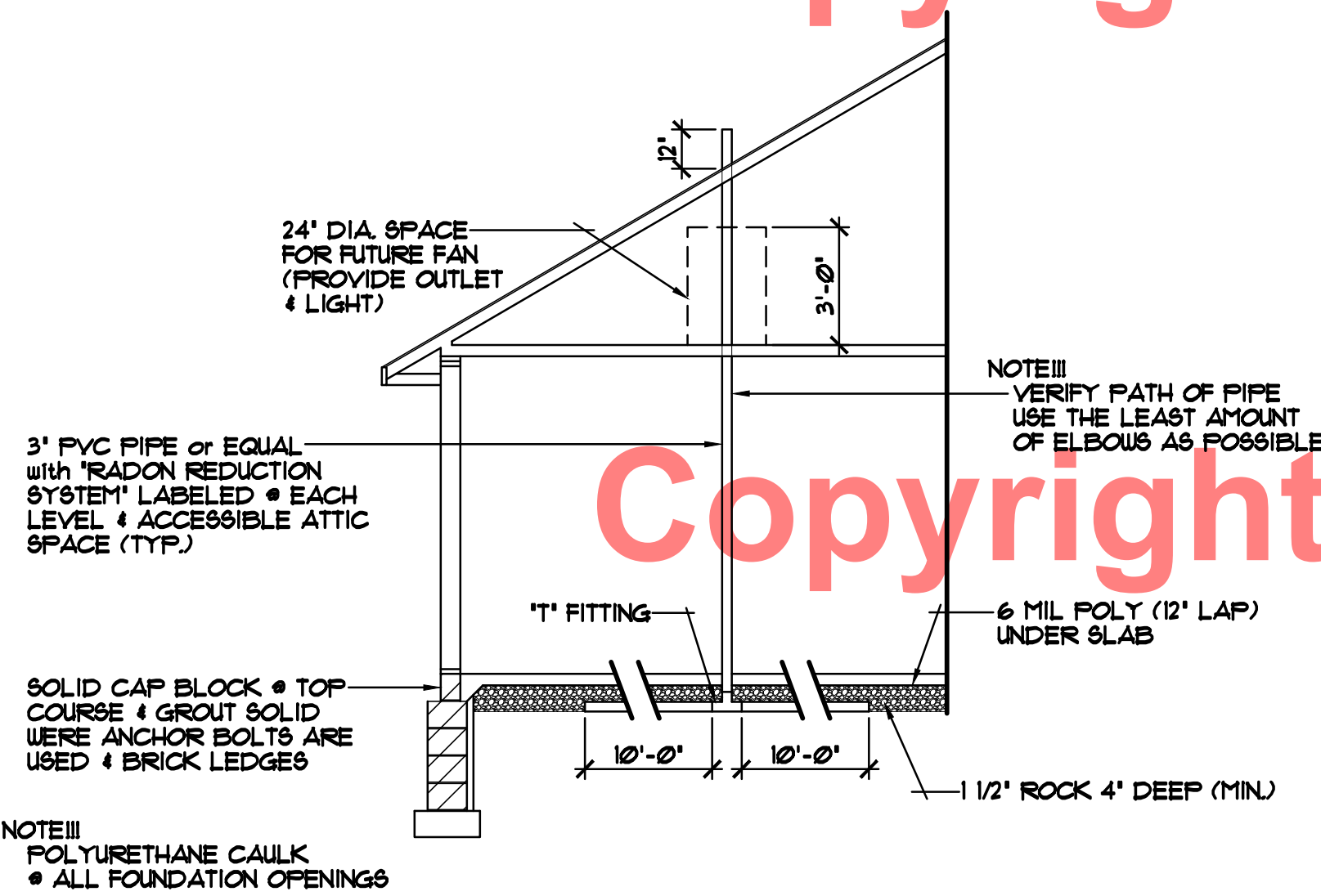
- ROOF CONSTRUCTION:**
- PRE-MANUFACTURED ROOF TRUSSES ENGINEERED BY SUPPLIER
  - 1/150 ROOF VENTS AT SOFFITS, 1/150 VENT AT RIDGE
  - AIR CHUTE AT EACH TRUSS SPACE
  - 1/16" OSB ROOF SHEATHING
  - 15" ROOFING FELT
  - ICE & WATER MEMBRANE APPLIED 24' BEYOND EXTERIOR WALL
  - 30 YEAR ARCHITECTURAL SHINGLES

- SOFFIT / FASCIA:**
- 2x6 SUB FASCIA
  - ALUMINUM FASCIA COVER
  - ALUMINUM VENTED SOFFIT

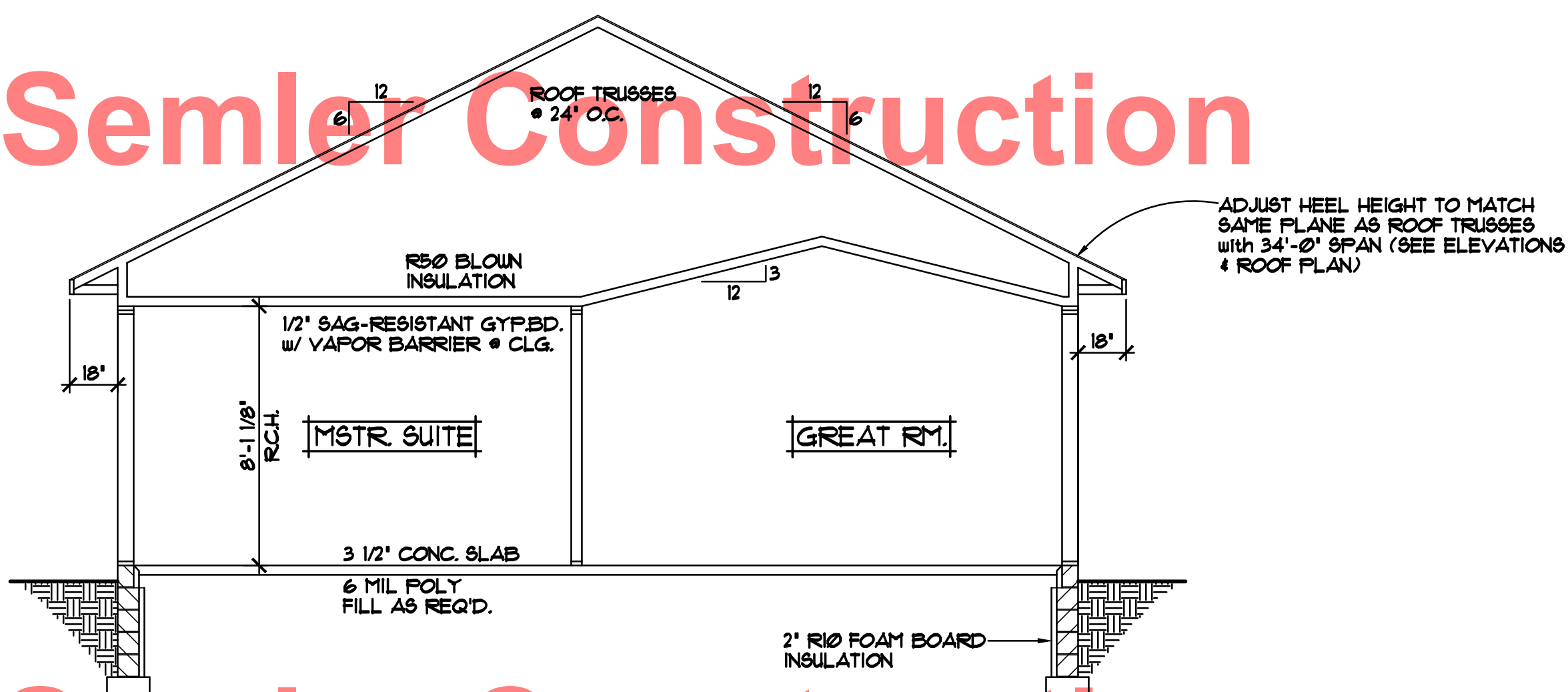
- WALL CONSTRUCTION:**
- TYVEK HOUSE WRAP
  - 1/16" OSB SHEATHING
  - 2x6 STUDS • 16" O.C.
  - R21 F.G. BATT INSULATION
  - 4 MIL POLY VAPOR BARRIER
  - 1/2" GYPSUM BOARD AT INTERIOR

- SILL CONSTRUCTION:**
- 2x6 TREATED SILL PLATE w/SEALER
  - 1/2" ANCHOR BOLTS • 12" O.C.

Copyright Semler Construction



ALTERNATE METHOD FOR PASSIVE RADON MITIGATION SYSTEM



Copyright Semler Construction

REVISIONS
XX/XX/XX 0000 BY:XX
XX/XX/XX 0000 BY:XX

**SPECIAL NOTICE:**  
CROIX DESIGN AND DRAFTING, INC. ACCEPTS NO RESPONSIBILITY FOR ERRORS AND/OR OMISSIONS. THESE DRAWINGS ARE DESIGN CONCEPT ONLY. EVERY EFFORT HAS BEEN MADE TO PREVENT ERRORS, BUT THE USER MUST VERIFY ALL DIMENSIONS, MATERIALS, AND CONDITIONS BEFORE CONSTRUCTION. THE USER SHALL BE RESPONSIBLE FOR ANY CHANGES OR ADJUSTMENTS REQUIRED DURING CONSTRUCTION. NO REPRESENTATION IS MADE OR IMPLIED FOR ACCURACY.

OFFICE: 763.757.5997  
FAX: 763.757.4383  
ANDOVER, MINNESOTA  
WWW.CROIXDESIGN.COM

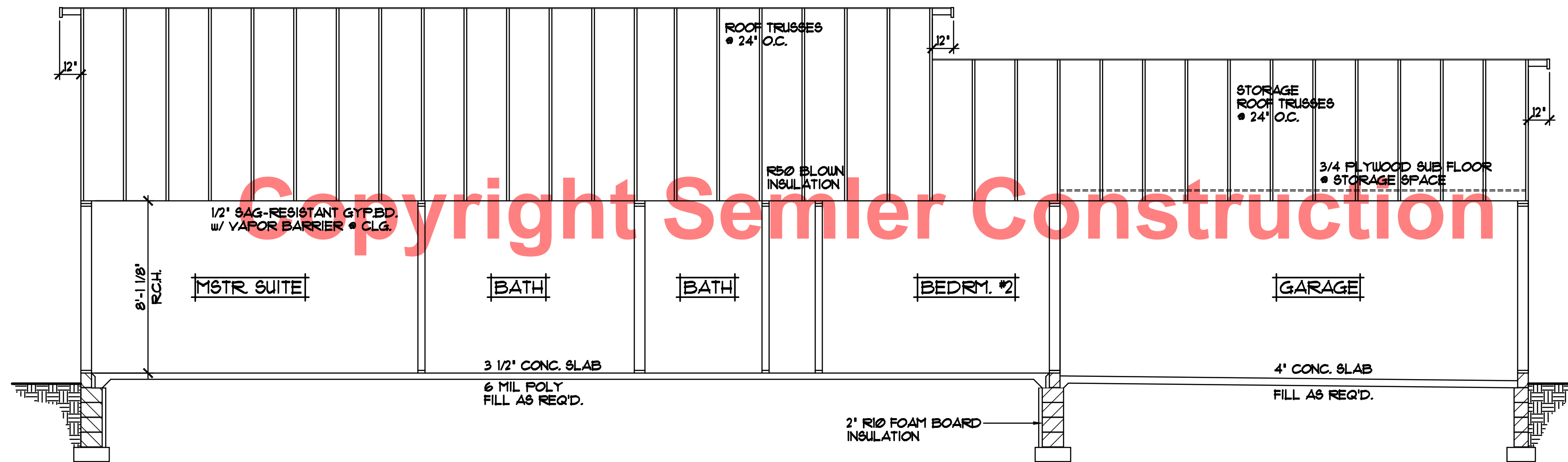


BUILT BY:  
SEMLER HOMES

SHEET  
5  
of 6  
CADD FILE #  
17359

Copyright Semler Construction

Copyright Semler Construction



CROSS SECTION "C" 1/4" = 1'-0"

Copyright Semler Construction

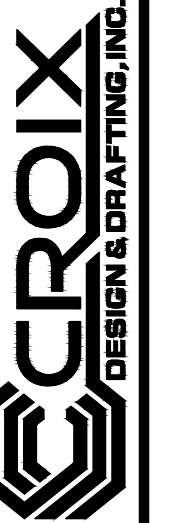
REVISIONS

XXXXXX  
0000  
BY:XX

XXXXXX  
0000  
BY:XX

**SPECIAL NOTICE:**  
CROIX DESIGN AND DRAFTING, INC. ACCEPTS NO RESPONSIBILITY FOR ERRORS AND/OR OMISSIONS. THESE DRAWINGS ARE DESIGN CONCEPT ONLY. EVERY EFFORT HAS BEEN MADE TO PREVENT ERRORS, BUT THE USER MUST VERIFY ALL DIMENSIONS AND CONDITIONS BEFORE CONSTRUCTION. THE USER SHALL BE RESPONSIBLE FOR ANY CHANGES OR ADJUSTMENTS REQUIRED DURING CONSTRUCTION. NO REPRESENTATION IS MADE OR IMPLIED FOR ACCURACY.

OFFICE: 763.757.5997  
FAX: 763.757.4383  
ANDOVER, MINNESOTA  
WWW.CROIXDESIGN.COM

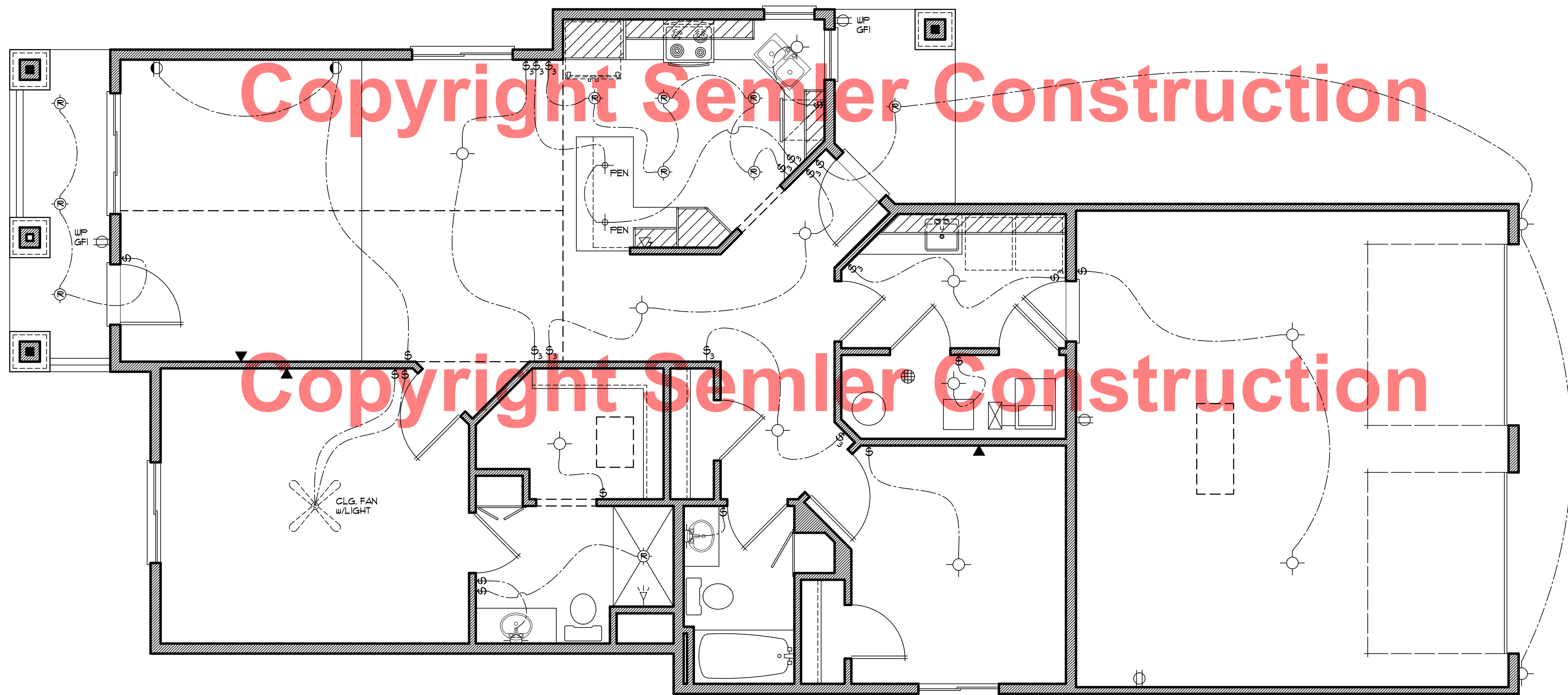


BUILT BY:  
SEMLER HOMES

SHEET  
6  
OF 6  
CADD FILE #  
17359

Copyright Semler Construction

ELECTRICAL and MECHANICAL SYMBOLS			
▽	TELEPHONE JACK	☼	EXHAUST FAN
▼	TV/CABLE JACK	○	LIGHT - CEILING FIXTURE
Ⓢ	SWITCH - SINGLE	○	LIGHT - RECESSED FIXTURE
Ⓢ <sub>3</sub>	SWITCH - THREE WAY	○	LIGHT - RECESSED DIRECTIONAL
Ⓢ <sub>4</sub>	SWITCH - FOUR WAY	○	LIGHT - PENDANT
Ⓢ <sub>D</sub>	SWITCH - DIMMER	△	LIGHT - TRACK
Ⓢ <sub>FC</sub>	SWITCH - FAN CONTROLS	— —	LIGHT - FLUORESCENT
○	OUTLET - DUPLEX	○	LIGHT - WALL MOUNTED
○	OUTLET - DUPLEX SWITCHED	⊕	FLOOR DRAIN
○ <sub>GFI</sub>	OUTLET - GROUND FAULT	⊕	HOSE BIBB
○ <sub>WP</sub>	OUTLET - WEATHERPROOF	⊕	GAS OUTLET
○	OUTLET - FLOOR/SOFFIT MOUNT	⊕	HVAC - SUPPLY VENT
○ <sub>220</sub>	OUTLET - RANGE OR DRYER	⊕	HVAC - RETURN VENT
⊕	OUTLET - QUAD		
Ⓢ <sub>D</sub>	SMOKE DETECTOR		



Copyright Semler Construction

ELECTRICAL PLAN 1/4"=1'-0"

REVISIONS
XXXXXX 0000 BY:XX
XXXXXX 0000 BY:XX

**SPECIAL NOTICE:**  
CROIX DESIGN AND DRAFTING, INC. ACCEPTS NO RESPONSIBILITY FOR ERRORS AND/OR OMISSIONS. THESE DRAWINGS ARE DESIGN CONCEPT ONLY. EVERY EFFORT HAS BEEN MADE TO PREVENT ERRORS AND OMISSIONS. THE USER SHALL BE RESPONSIBLE FOR VERIFYING ALL DIMENSIONS AND BE RESPONSIBLE FOR ANY CHANGES OR ADJUSTMENTS REQUIRED DURING ACTUAL CONSTRUCTION. NO REPRESENTATION IS MADE OR IMPLIED FOR ACCURACY.

OFFICE: 763.757.5997  
FAX: 763.757.4383  
ANDOVER, MINNESOTA  
WWW.CROIXDESIGN.COM



BUILT BY:  
SEMLER HOMES

SHEET  
9 of X  
CADD FILE #  
17359