

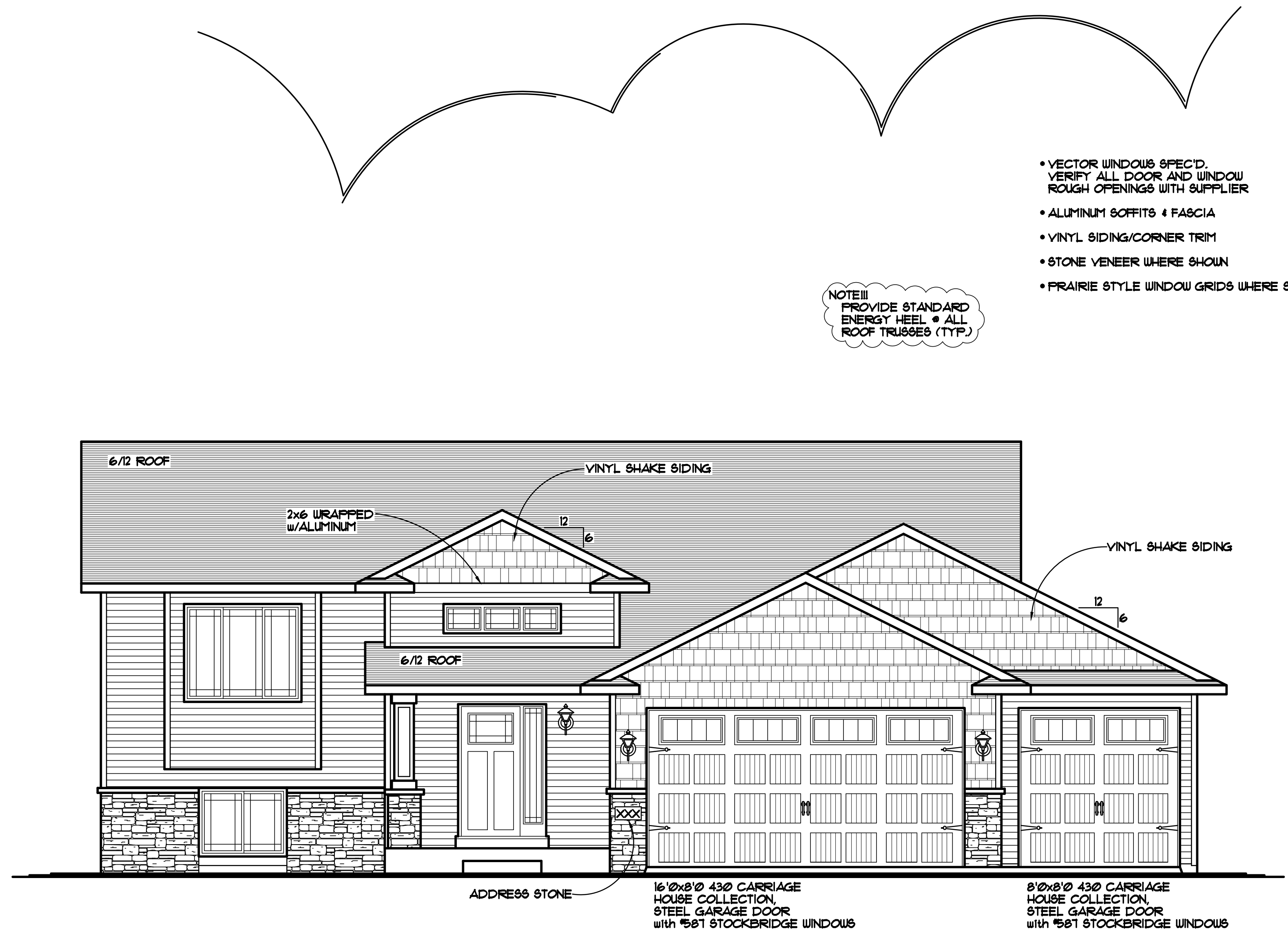
REVISIONS	BY
15233	N.F.
16101	N.F.
16134	N.F.
17151	N.F.

**SPECIAL NOTICE:**  
CROIX DESIGN AND DRAFTING, INC. ACCEPTS NO RESPONSIBILITY FOR ERRORS AND/OR OMISSIONS. THESE DRAWINGS ARE DESIGN CONCEPT ONLY. EVERY EFFORT HAS BEEN MADE TO DESIGN ACCURATELY. THE OWNER, GENERAL CONTRACTOR, SUB-CONTRACTORS, AND SUPPLIERS MUST CHECK ALL DETAILS AND DIMENSIONS AND BE RESPONSIBLE FOR ANY CHANGES OR ADJUSTMENTS REQUIRED DURING ACTUAL CONSTRUCTION. NO REPRESENTATION IS MADE OR IMPLIED FOR ACCURACY.

**COPYRIGHT NOTICE, ALL RIGHTS RESERVED**  
THESE ARCHITECTURAL PLANS AND ALL RELATED WORKS ARE PROTECTED BY UNITED STATES COPYRIGHT LAWS, AND MAY NOT BE REPRODUCED OR TRANSMITTED IN ANY FORM OR BY ANY MEANS, WITHOUT THE EXPRESS WRITTEN PERMISSION OF CROIX DESIGN AND DRAFTING, INC.

- VECTOR WINDOWS SPEC'D. VERIFY ALL DOOR AND WINDOW ROUGH OPENINGS WITH SUPPLIER
- ALUMINUM SOFFITS & FASCIA
- VINYL SIDING/CORNER TRIM
- STONE VENEER WHERE SHOWN
- PRAIRIE STYLE WINDOW GRIDS WHERE SHOWN

NOTE!!!  
PROVIDE STANDARD ENERGY HEEL • ALL ROOF TRUSSES (TYP.)



**FRONT ELEVATION** 1/4"=1'-0"  
1300 SQ. FT. MAIN LEVELS

THE:  
**RAMSEY MODEL**  
XXXX HELIUM STREET  
LOT 33, BLOCK 1, HARVEST ESTATES  
RAMSEY, MN

© COPYRIGHT 2015-2017 NOTICE, ALL RIGHTS RESERVED CROIX DESIGN AND DRAFTING, INC.

DESIGN AND DRAFTING BY:

ARCHITECTURAL DESIGN AND DRAFTING SERVICE • HOME PLAN SERVICE • CUSTOM HOMES • REMODELING • PHONE: 763.757.5997 • ANDOVER, MINNESOTA • WWW.CROIXDESIGN.COM

BUILT BY:

1895 STATION PARKWAY NW ANDOVER, MN 55304  
LIC. # 3649  
763-754-5518

DRAWN	N.F.
CHECKED	XX
DATE:	5/05/2017
SCALE:	AS NOTED
CADD FILE #	17193
SHEET	1 of 6

REVISIONS
XXXXXXXX 0000 BY:NF.
XXXXXXXX 0000 BY:NF.

**SPECIAL NOTICE:**  
CROIX DESIGN AND DRAFTING, INC. ACCEPTS NO RESPONSIBILITY FOR ERRORS AND/OR OMISSIONS. THESE DRAWINGS ARE DESIGN CONCEPT ONLY. EVERY EFFORT HAS BEEN MADE TO PREPARE THESE DRAWINGS ACCURATELY. HOWEVER, THE USER SHALL BE RESPONSIBLE FOR VERIFYING ALL DIMENSIONS AND CONDITIONS BEFORE CONSTRUCTION. THE USER SHALL BE RESPONSIBLE FOR ANY CHANGES OR ADJUSTMENTS REQUIRED DURING CONSTRUCTION. NO REPRESENTATION IS MADE OR IMPLIED FOR ACCURACY.

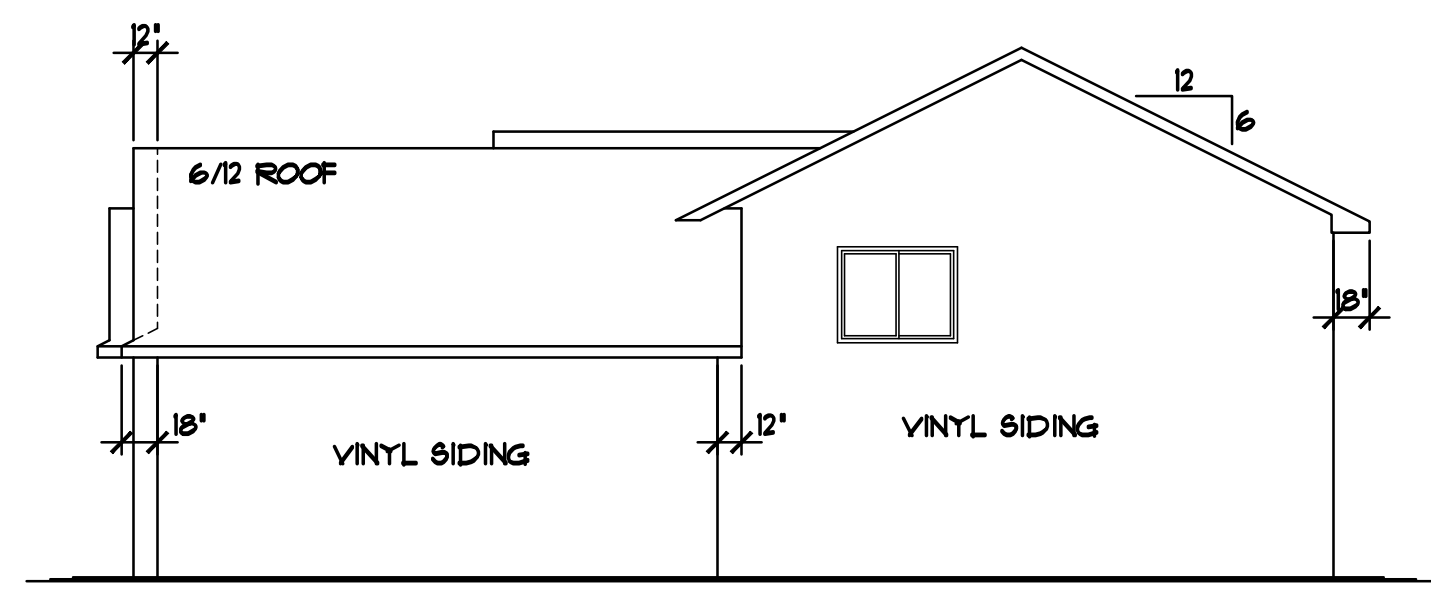
OFFICE: 763.757.5997  
FAX: 763.757.4383  
ANDOVER, MINNESOTA  
WWW.CROIXDESIGN.COM



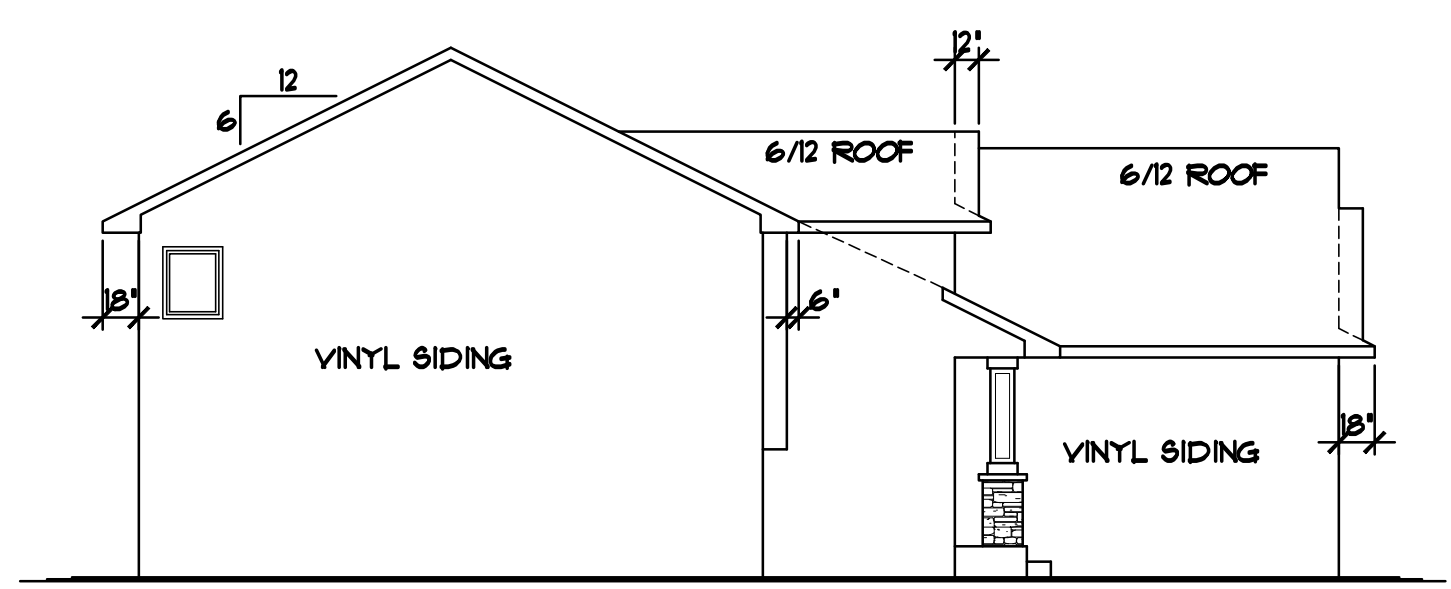
BUILT BY:  
**SEMLER HOMES**

SHEET  
**2**  
OF 6  
CADD FILE #  
17193

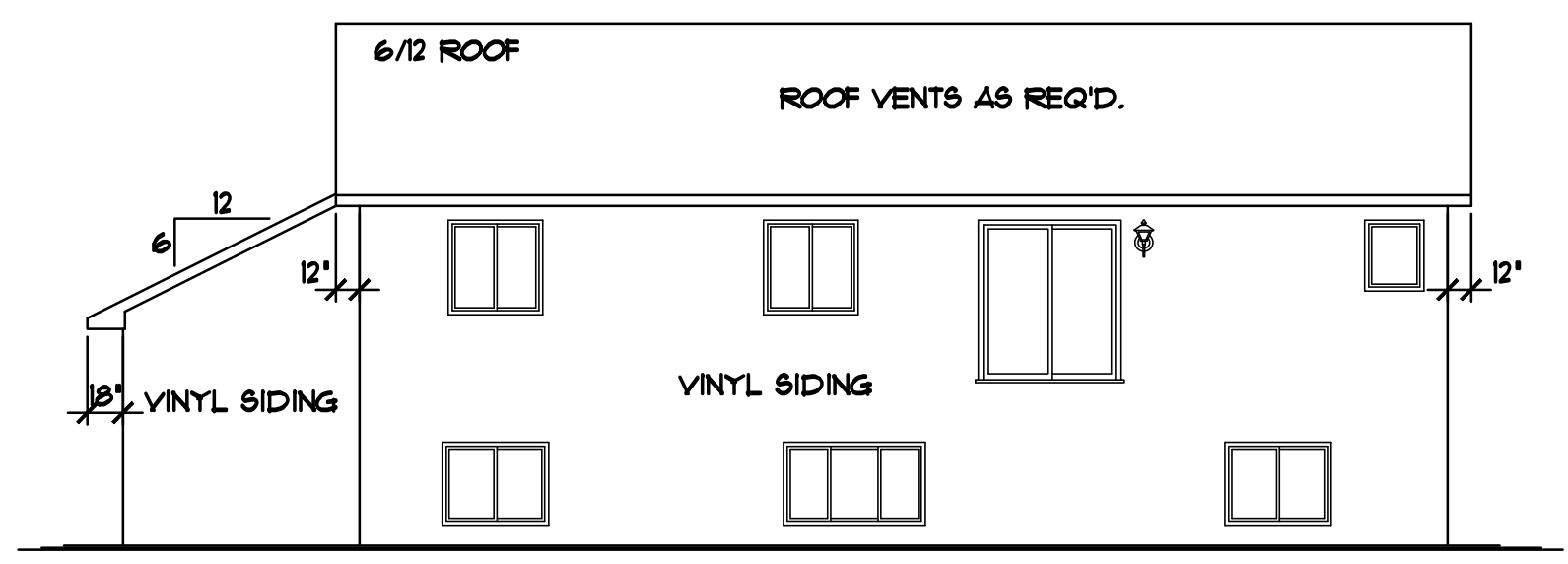
NOTE III  
PROVIDE STANDARD  
ENERGY HEEL @ ALL  
ROOF TRUSSES (TYP.)



**RIGHT ELEVATION** 1/8"=1'-0"



**LEFT ELEVATION** 1/8"=1'-0"



**REAR ELEVATION** 1/8"=1'-0"

REVISIONS
XXXXXXXX 0000 BY:N.F.
XXXXXXXX 0000 BY:N.F.

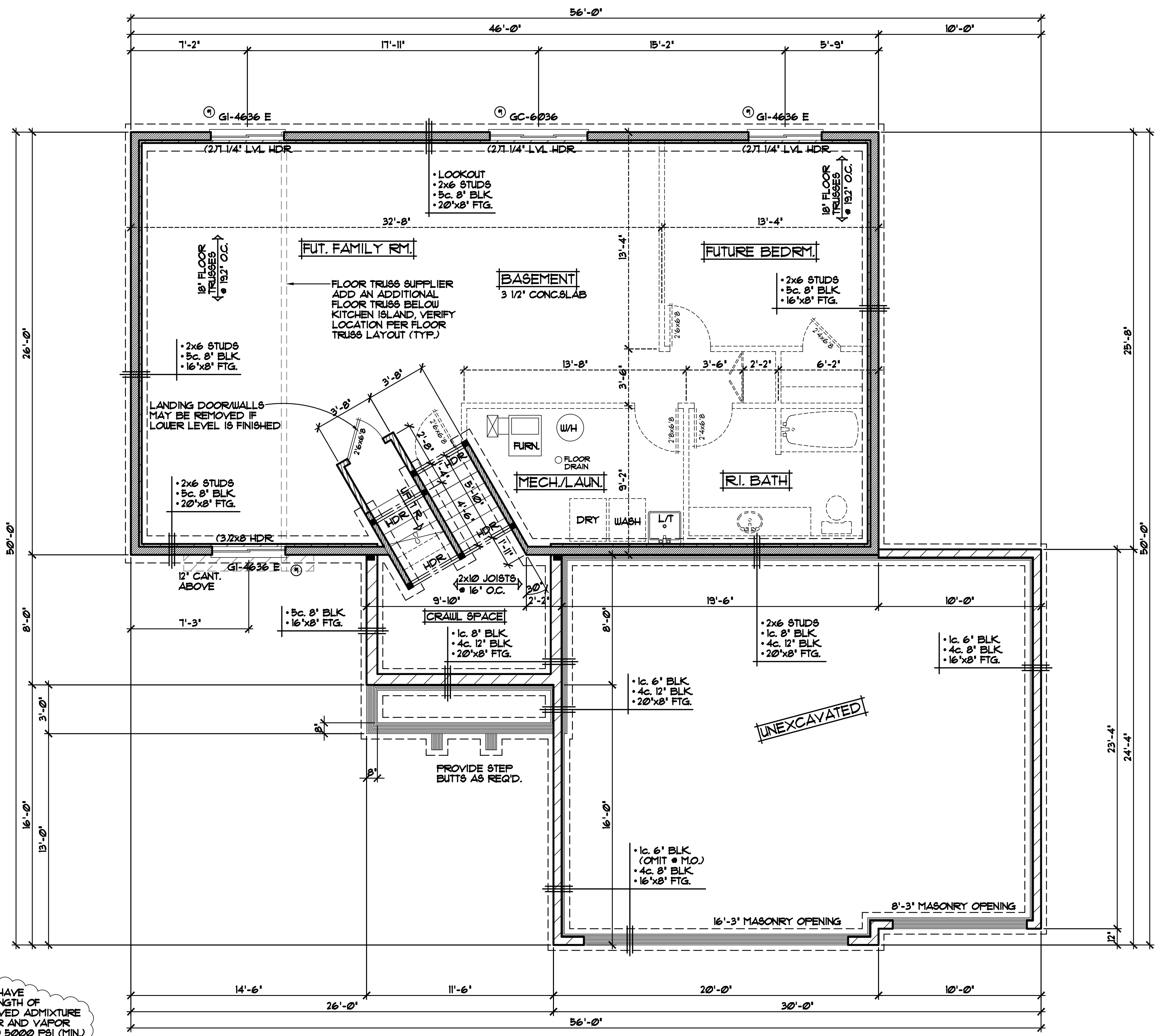
**SPECIAL NOTICE:**  
CROIX DESIGN AND DRAFTING, INC. ACCEPTS NO RESPONSIBILITY FOR ERRORS AND/OR OMISSIONS. THESE DRAWINGS ARE DESIGN CONCEPT ONLY. EVERY EFFORT HAS BEEN MADE TO PREPARE THESE DRAWINGS ACCURATELY. THE USER SHALL BE RESPONSIBLE FOR VERIFYING ALL DIMENSIONS AND MATERIALS. THE USER SHALL BE RESPONSIBLE FOR ANY CHANGES OR ADJUSTMENTS REQUIRED DURING CONSTRUCTION. NO REPRESENTATION IS MADE OR IMPLIED FOR ACCURACY.

OFFICE: 763.757.5997  
FAX: 763.757.4383  
ANDOVER, MINNESOTA  
WWW.CROIXDESIGN.COM



BUILT BY:  
**SEMLER HOMES**

SHEET  
**3**  
of 6  
CADD FILE #  
17193



**NOTE III**  
PROVIDE 2" R10 FOAM BOARD INSULATION • EXTERIOR CONC. FOUNDATION HOUSE WALLS

**NOTE III**  
PROVIDE 1/2" GYP. BD. • BASEMENT CLG. & ALLOW FOR 80 SQ. FT. MAX OPEN CLG. AREA FOR MECHANICAL, FIRE BLOCK TRUSS SPACE • PERIMETER OF OPEN AREA

**NOTE III**  
VERIFY ALL MECHANICAL EQUIPMENT LOCATIONS, LOCATIONS ON PLAN ARE REPRESENTATION ONLY

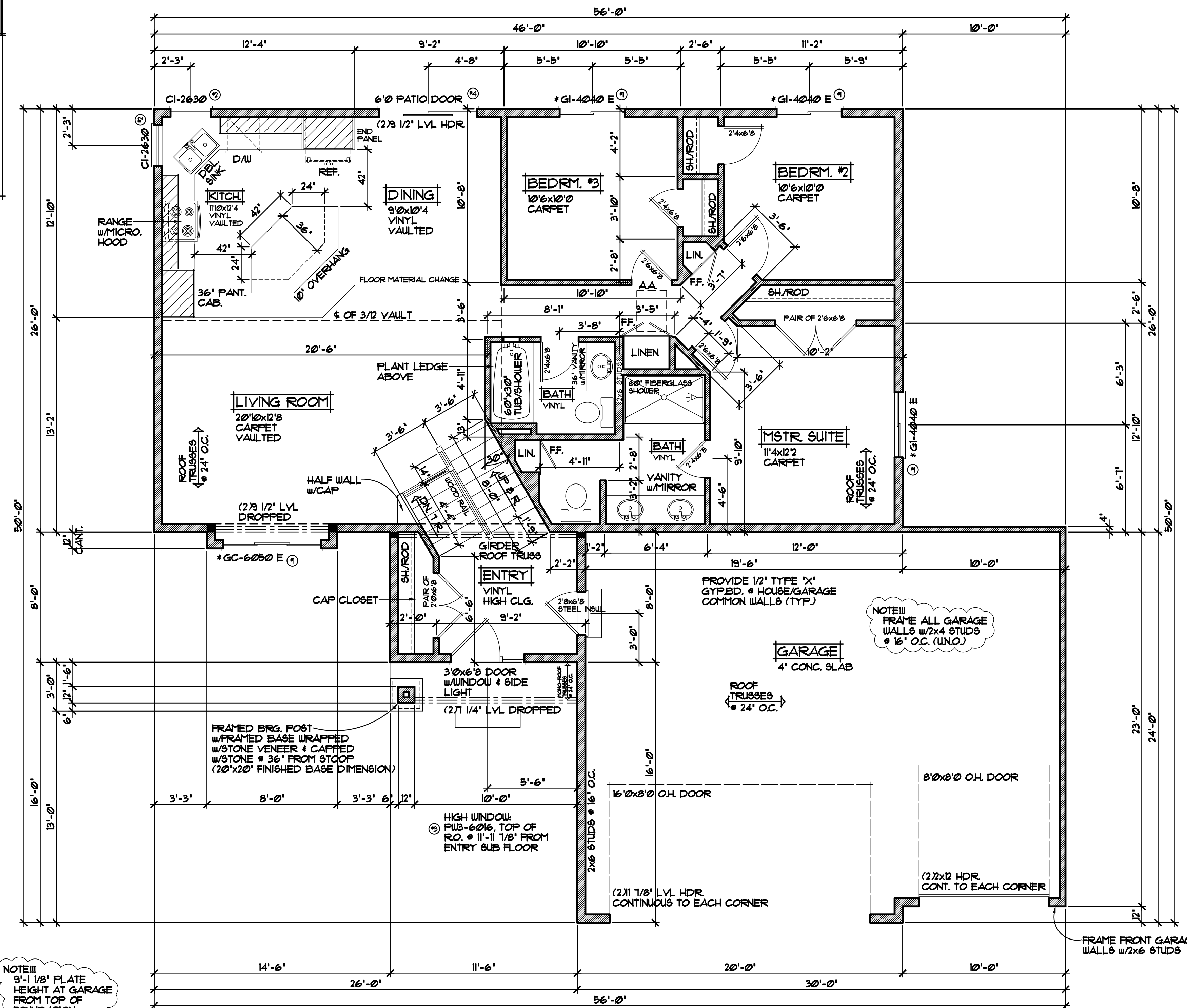
**NOTE III**  
SOLID CAP BLOCK • TOP COURSE & GROUT • TOP COURSE & GROUT • TOP COURSE & GROUT WERE ANCHOR BOLTS ARE USED & BRICK LEDGES

**NOTE III**  
ALL FOOTINGS SHALL HAVE A COMPRESSIVE STRENGTH OF 2500 PSI WITH APPROVED ADMIXTURE THAT PROVIDES WATER AND VAPOR RESISTANCE EQUAL TO 5000 PSI (MIN.)

**NOTE III**  
VECTOR VINYL WINDOWS SPECIFIED  
VERIFY ALL DOOR & WINDOW ROUGH OPENINGS w/SUPPLIER  
(\* INDICATES SASH LIMITER REQUIRED)

**WINDOW and DOOR PERFORMANCE DATA**  
U-VALUE / SHGC

- ① GLIDER UNIT  
U-VALUE = 0.30  
SHGC = 0.34
- ② CASEMENT UNIT  
U-VALUE = 0.29  
SHGC = 0.30
- ③ FIXED/PICTURE UNIT  
U-VALUE = 0.28  
SHGC = 0.31
- ④ SLIDING PATIO DOOR  
U-VALUE = 0.28  
SHGC = 0.34



NOTE III  
9'-1 1/8" PLATE  
HEIGHT AT GARAGE  
FROM TOP OF  
FOUNDATION

**MAIN LEVEL FLOOR PLAN** 1/4" = 1'-0"  
1300 SQ. FT. MAIN LEVELS

NOTE III  
VECTOR VINYL WINDOWS SPECIFIED  
VERIFY ALL DOOR & WINDOW ROUGH  
OPENINGS W/SUPPLIER  
(\* INDICATES SASH LIMITER REQUIRED)

REVISIONS
XXXXXX 0000 BY: NF.
XXXXXX 0000 BY: NF.

**SPECIAL NOTICE:**  
CROIX DESIGN AND DRAFTING, INC. ACCEPTS NO RESPONSIBILITY FOR ERRORS AND/OR OMISSIONS IN THESE DRAWINGS. DESIGN CONCEPT ONLY. EVERY EFFORT HAS BEEN MADE TO PREPARE THESE DRAWINGS ACCURATELY. THE USER SHALL BE RESPONSIBLE FOR VERIFYING ALL DIMENSIONS AND CONDITIONS AND BE RESPONSIBLE FOR ANY CHANGES OR ADJUSTMENTS REQUIRED DURING ACTUAL CONSTRUCTION. NO REPRESENTATION IS MADE OR IMPLIED FOR ACCURACY.

OFFICE: 763.757.5997  
FAX: 763.757.4383  
ANDOVER, MINNESOTA  
WWW.CROIXDESIGN.COM



BUILT BY:  
**SEMLER HOMES**

SHEET  
**4**  
of 6  
CADD FILE #  
11193

REVISIONS
XXXXXX 0000 BY:NF.
XXXXXX 0000 BY:NF.

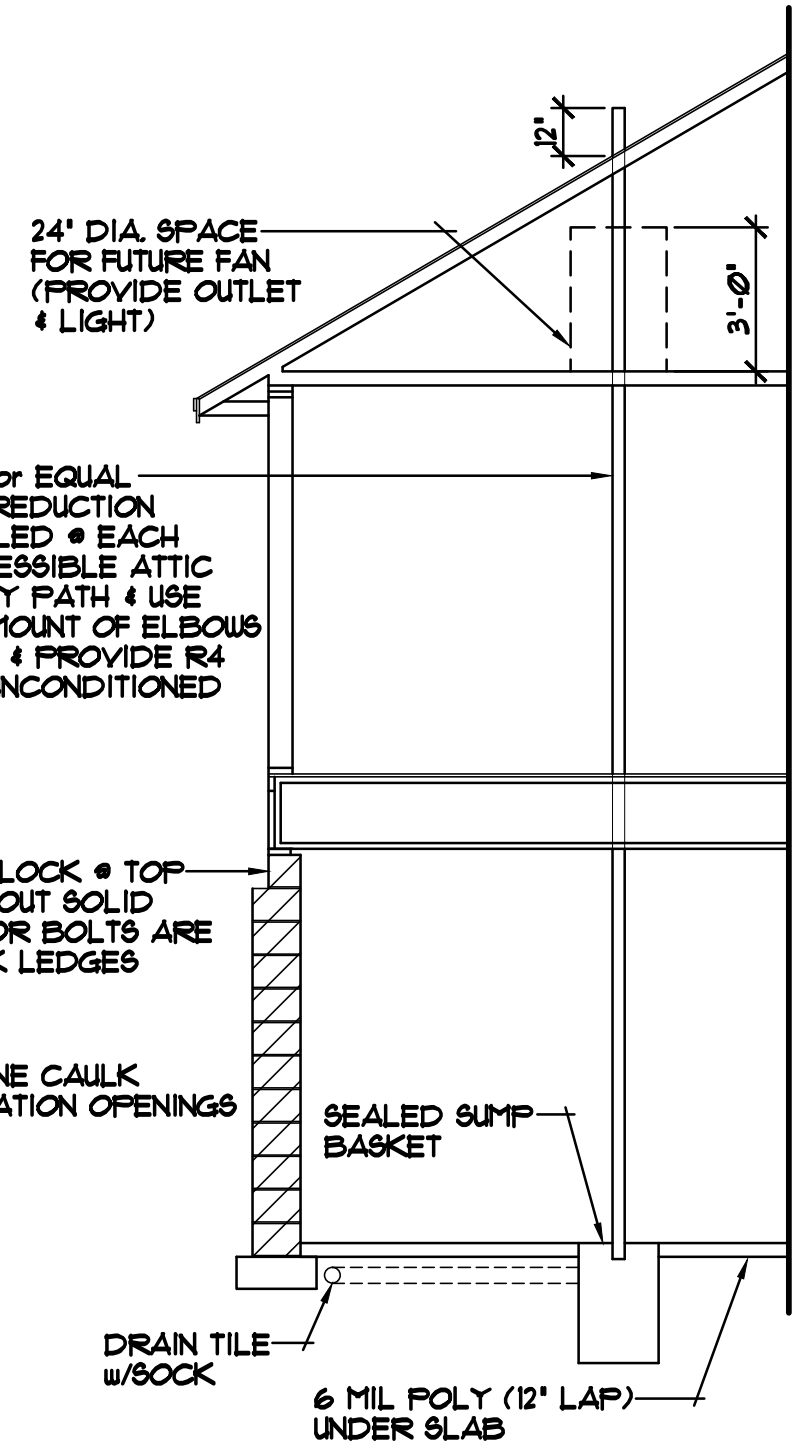
**SPECIAL NOTICE:**  
CROIX DESIGN AND DRAFTING, INC. ACCEPTS NO RESPONSIBILITY FOR ERRORS AND/OR OMISSIONS. THESE DRAWINGS ARE DESIGN CONCEPT ONLY. EVERY EFFORT HAS BEEN MADE TO PREVENT ERRORS, BUT THE USER MUST VERIFY ALL DIMENSIONS, MATERIALS, AND CONDITIONS BEFORE CONSTRUCTION. THE USER SHALL BE RESPONSIBLE FOR ANY CHANGES OR ADJUSTMENTS REQUIRED DURING CONSTRUCTION. NO REPRESENTATION IS MADE OR IMPLIED FOR ACCURACY.

OFFICE: 763.757.5997  
FAX: 763.757.4383  
ANDOVER, MINNESOTA  
WWW.CROIXDESIGN.COM



BUILT BY:  
**SEMLER HOMES**

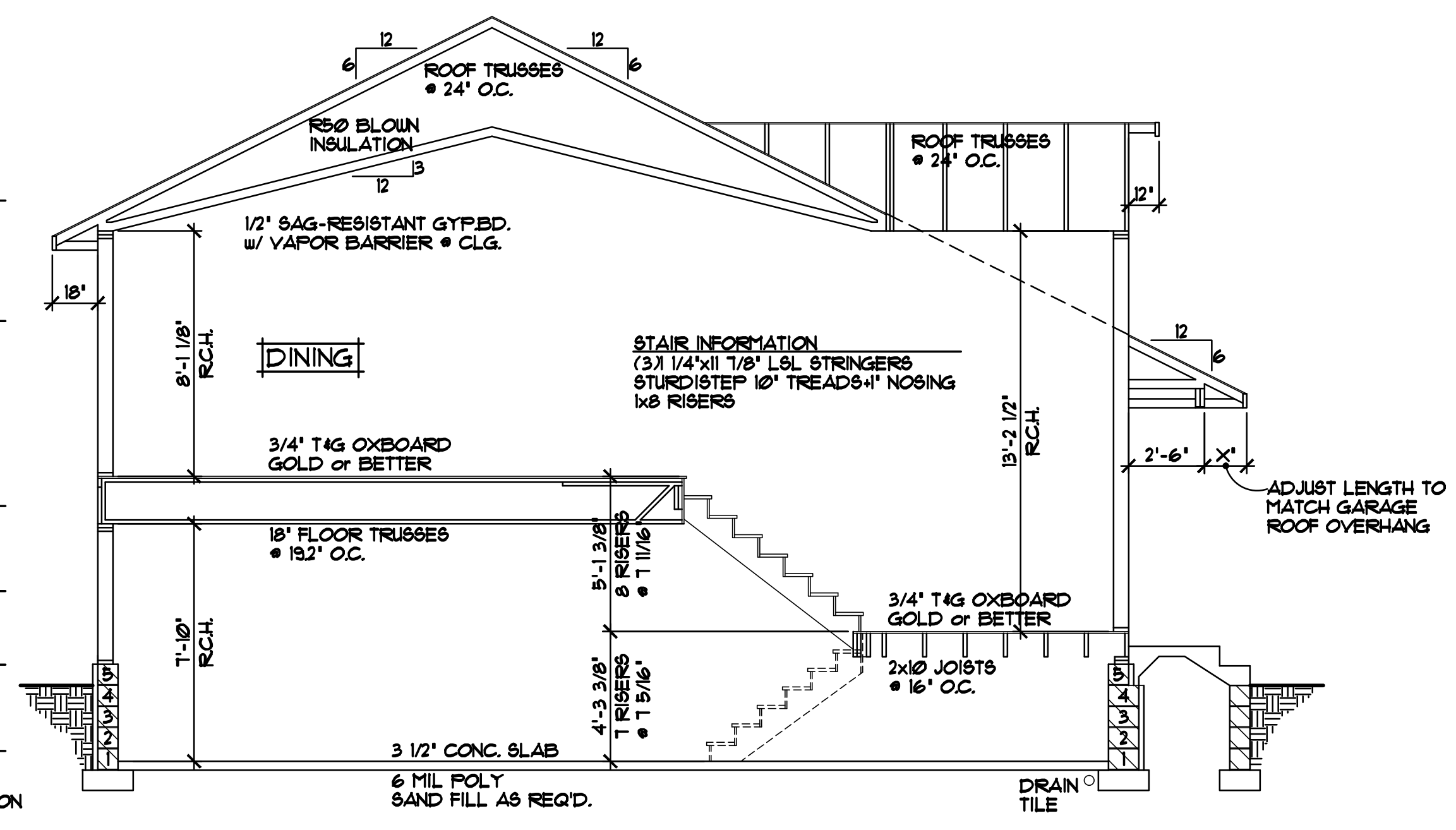
SHEET  
**5**  
of 6  
CADD FILE #  
11193



**PASSIVE RADON MITIGATION SYSTEM**

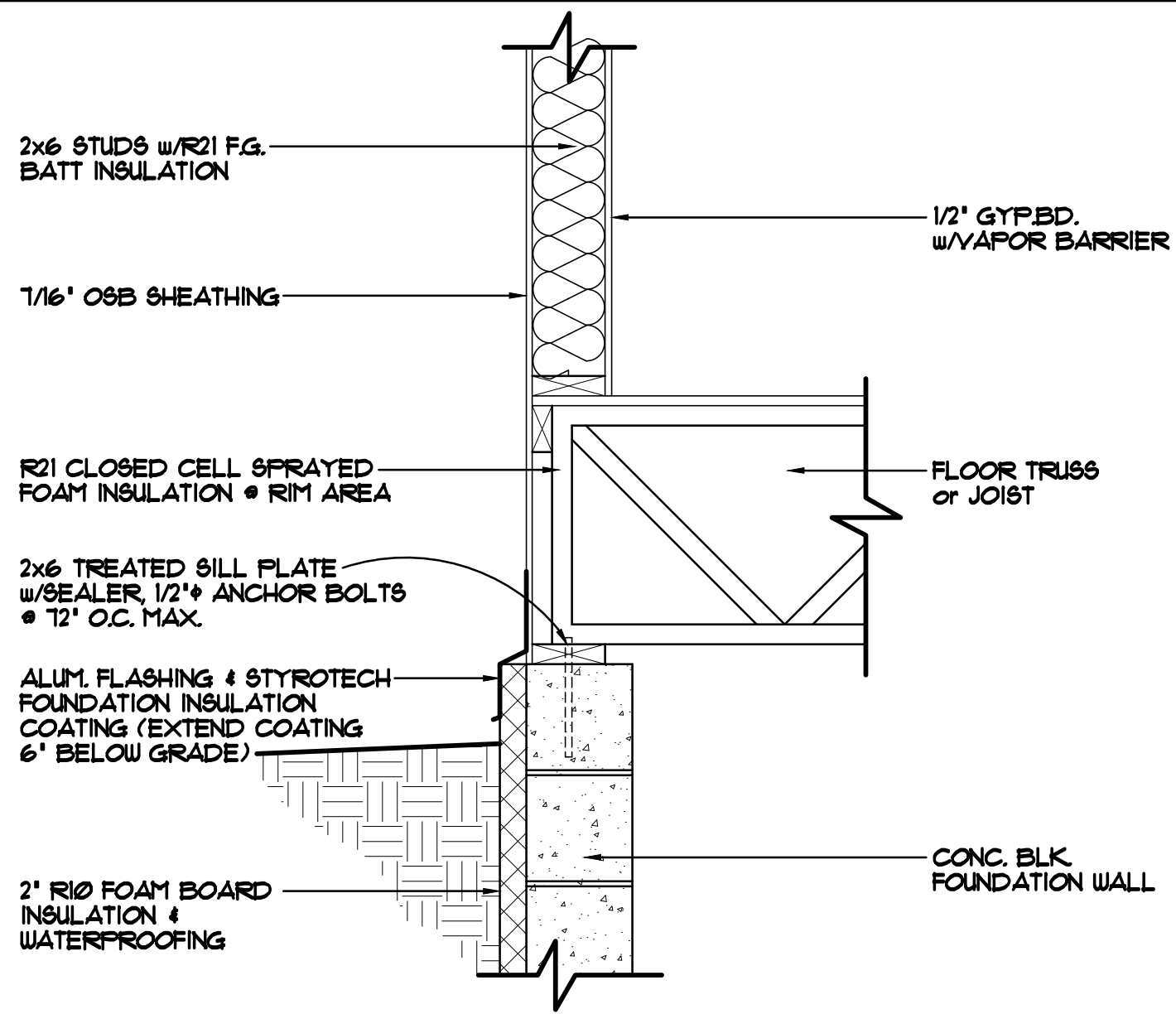
- ROOF CONSTRUCTION:**
- PREMANUFACTURED ROOF TRUSSES ENGINEERED BY SUPPLIER
  - 1/150 ROOF VENTS AT SOFFITS, 1/150 VENT AT RIDGE
  - AIR CHUTE AT EACH TRUSS SPACE
  - 7/16" OSB ROOF SHEATHING
  - 15# ROOFING FELT
  - ICE & WATER MEMBRANE APPLIED 24" BEYOND EXTERIOR WALL
  - 30 YEAR ARCHITECTURAL SHINGLES
- SOFFIT / FASCIA:**
- 2x6 SUB FASCIA
  - ALUMINUM FASCIA COVER
  - ALUMINUM VENTED SOFFIT
- WALL CONSTRUCTION:**
- TYVEK HOUSE WRAP
  - 7/16" OSB SHEATHING
  - 2x6 STUDS • 16" O.C.
  - R21 FG. BATT INSULATION
  - 4 MIL POLY VAPOR BARRIER
  - 1/2" GYPSUM BOARD AT INTERIOR
- RIM AREA CONSTRUCTION:**
- SEE DETAILS (SHEET #6)
- WALL CONSTRUCTION:**
- SIMILAR TO ABOVE
- SILL CONSTRUCTION:**
- 2x6 TREATED SILL PLATE w/SEALER
  - 1/2" ANCHOR BOLTS • 12" O.C.
- FOUNDATION CONSTRUCTION:**
- BLOCK WALL FOUNDATION (SEE FOUNDATION FOR COURSING)
  - INSTALL R10 RIGID FOAM BD. INSULATION TO EXTERIOR OF FOUNDATION WALLS
  - WATERPROOFING

NOTE III  
PROVIDE STANDARD ENERGY HEEL • ALL ROOF TRUSSES (TYP.)

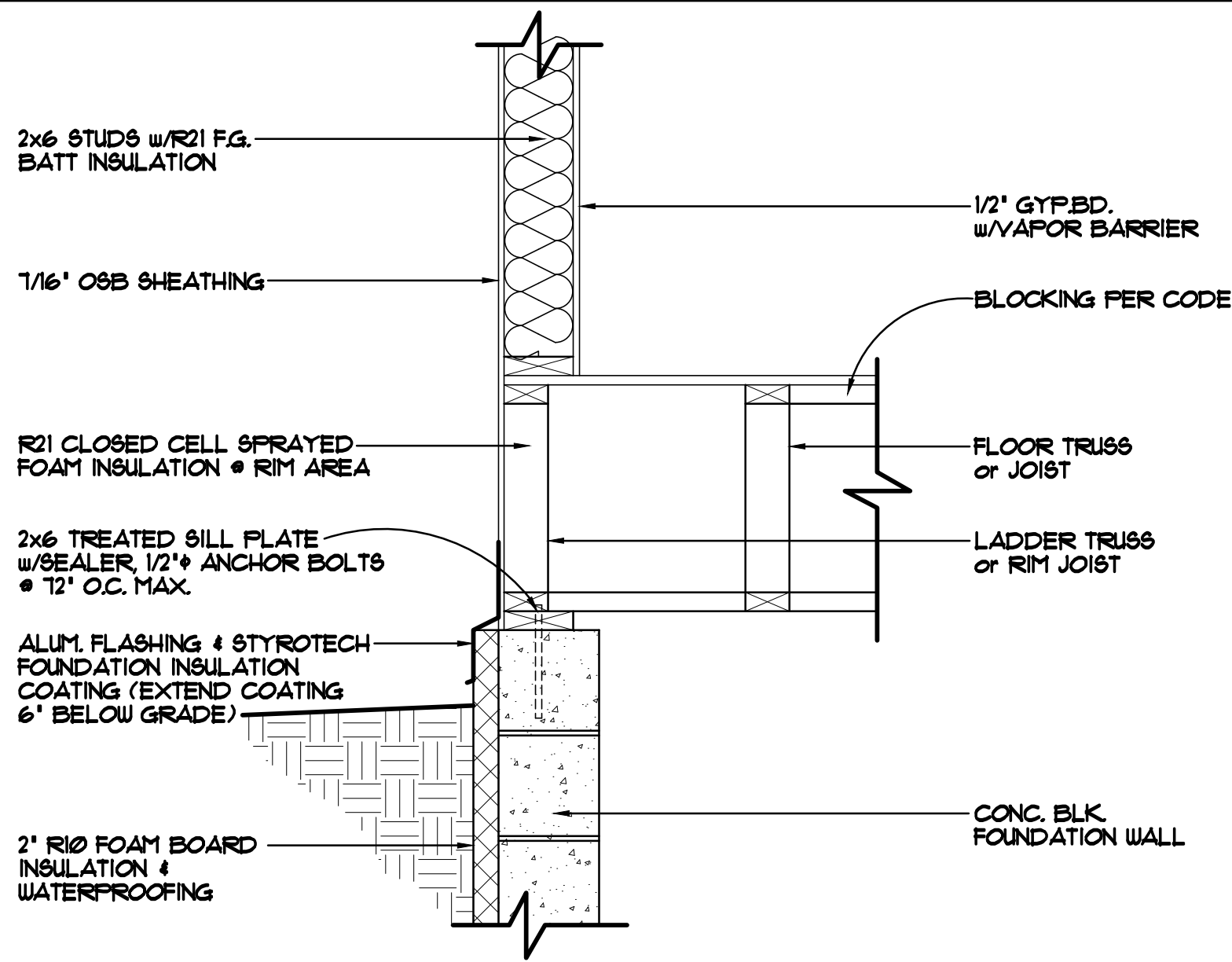


**CROSS SECTION** 1/4"=1'-0"

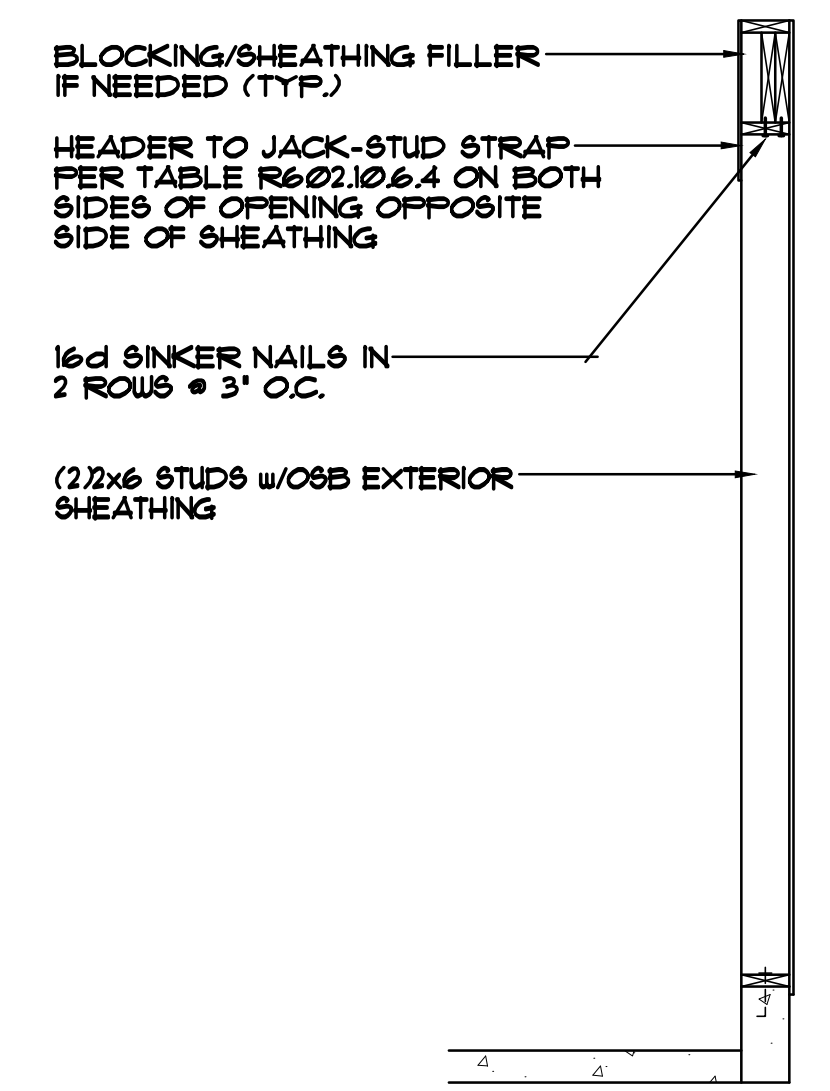
ALL HEIGHT CALCULATIONS FOR FOUNDATIONS ARE BASED ON THE USE OF FULL 8" HIGH BLOCK w/ 3/8" JOINTS. IF MODULAR BLOCK IS USED, CONTRACTORS SHOULD ADJUST HEIGHTS ACCORDINGLY.



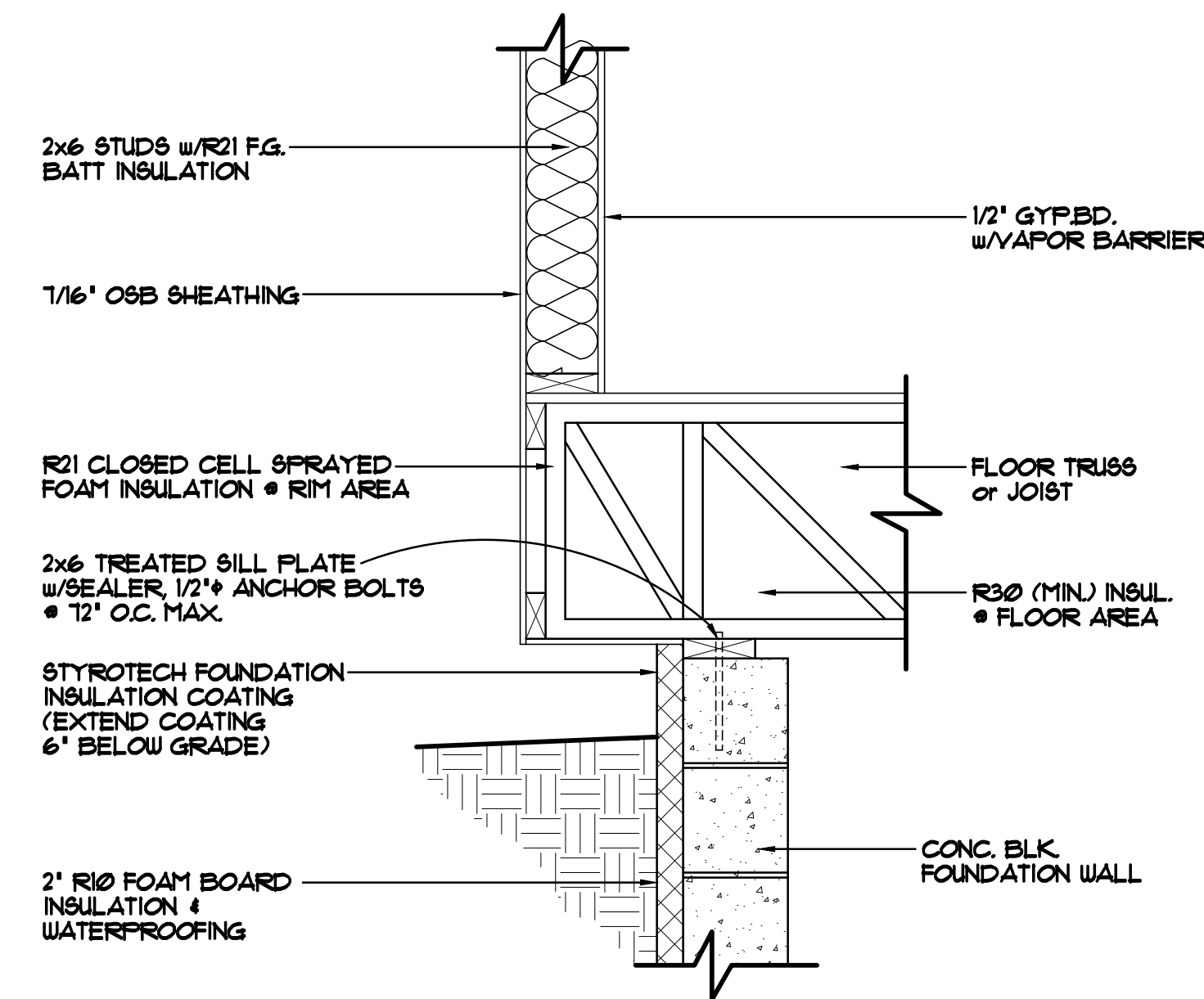
**FOUNDATION/RIM AREA DETAIL** 1"=1'-0"  
STANDARD RIM AREA, TRUSSES/JOISTS PERPENDICULAR TO FOUNDATION WALL



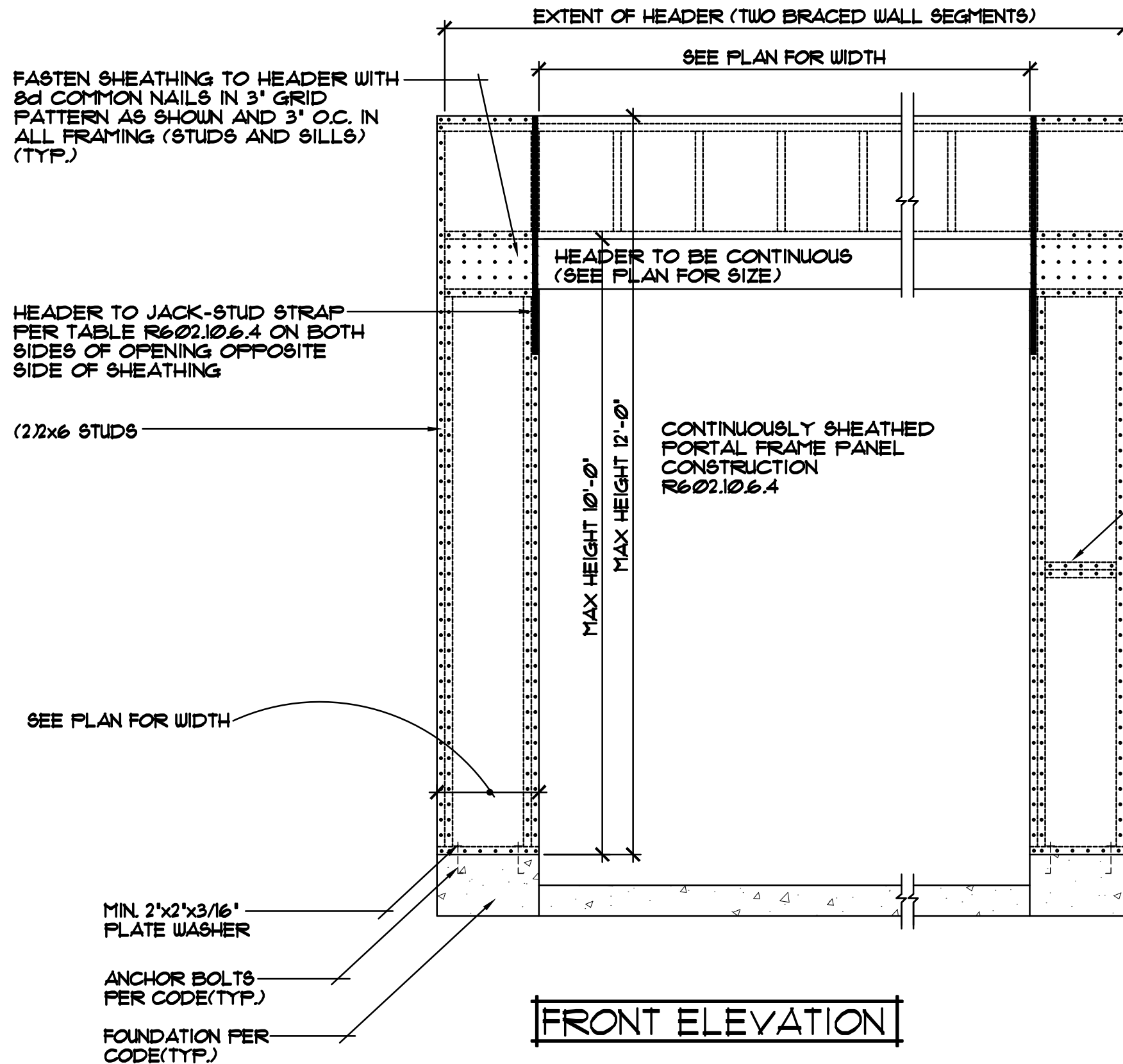
**FOUNDATION/RIM AREA DETAIL** 1"=1'-0"  
STANDARD RIM AREA, TRUSSES/JOISTS PARALLEL TO FOUNDATION WALL



**SIDE ELEVATION**

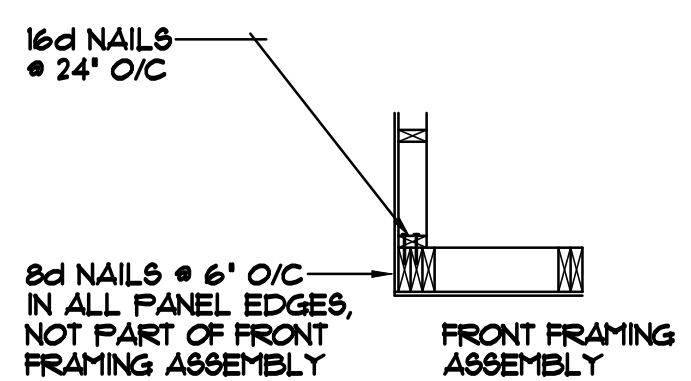


**FOUNDATION/RIM AREA DETAIL** 1"=1'-0"  
CANTILEVERED TRUSSES/JOISTS



**FRONT ELEVATION**

**CORNER FRAMING DETAIL**



**CONTINUOUSLY SHEATHED PORTAL FRAME PANEL CONSTRUCTION** 1/2"=1'-0"

REVISIONS
XX/XX/XX 0000 BY:XX
XX/XX/XX 0000 BY:XX

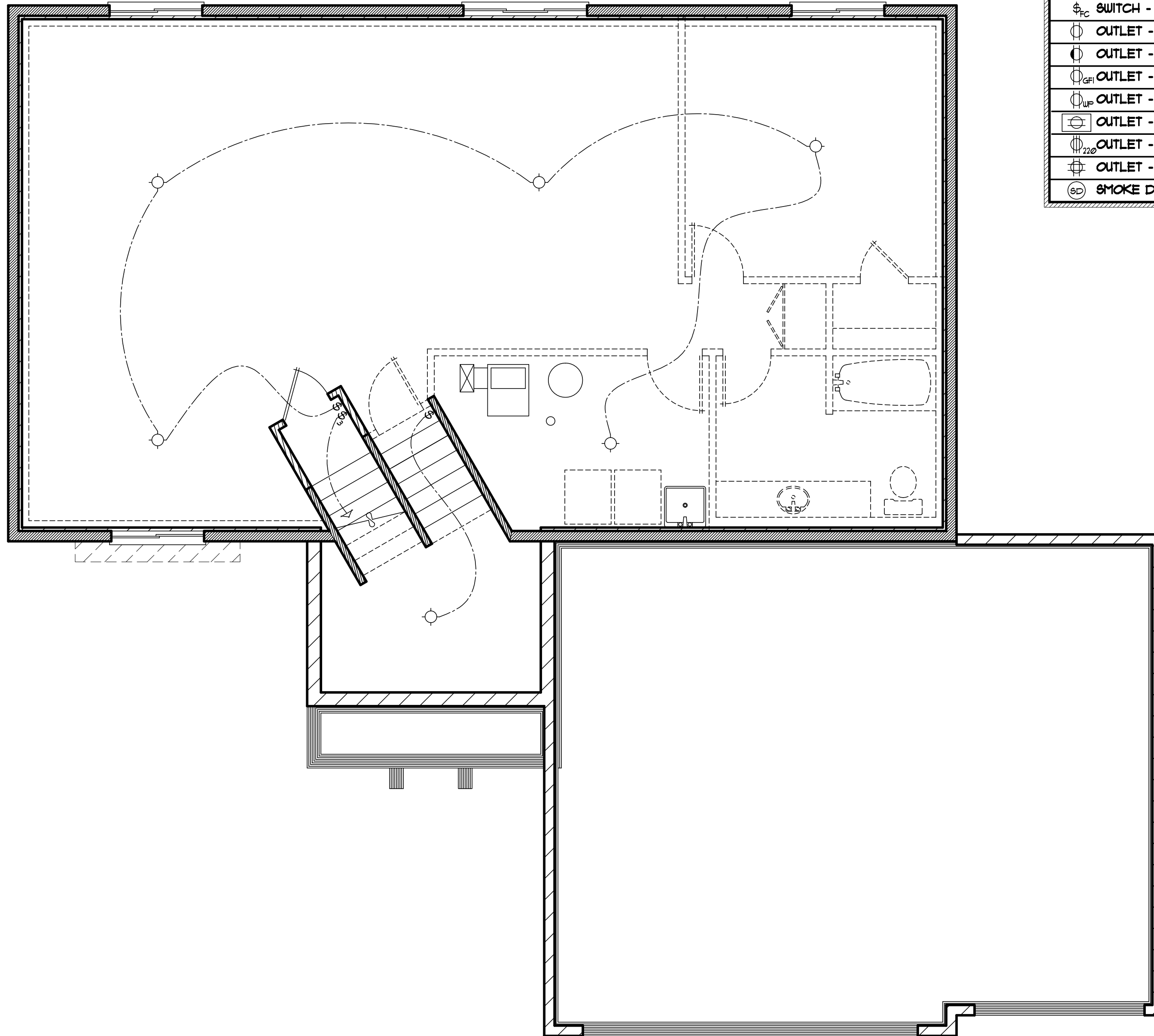
**SPECIAL NOTICE:** CROIX DESIGN AND DRAFTING, INC. ACCEPTS NO RESPONSIBILITY FOR ERRORS AND/OR OMISSIONS. THESE DRAWINGS ARE DESIGN CONCEPT ONLY. EVERY EFFORT HAS BEEN MADE TO PREVENT ERRORS, BUT THE USER MUST VERIFY ALL DIMENSIONS AND CONDITIONS BEFORE CONSTRUCTION. THE USER SHALL BE RESPONSIBLE FOR ANY CHANGES OR ADJUSTMENTS REQUIRED DURING CONSTRUCTION. NO REPRESENTATION IS MADE OR IMPLIED FOR ACCURACY.

OFFICE: 763.757.5997  
FAX: 763.757.4383  
ANDOVER, MINNESOTA  
WWW.CROIXDESIGN.COM



BUILT BY:  
**SEMLER HOMES**

SHEET  
**6**  
of 6  
CADD FILE #  
11193



ELECTRICAL and MECHANICAL SYMBOLS			
▽	TELEPHONE JACK	☉	EXHAUST FAN
▼	TV/CABLE JACK	○	LIGHT - CEILING FIXTURE
⊕	SWITCH - SINGLE	⊕	LIGHT - RECESSED FIXTURE
⊕ <sub>3</sub>	SWITCH - THREE WAY	⊕	LIGHT - RECESSED DIRECTIONAL
⊕ <sub>4</sub>	SWITCH - FOUR WAY	⊕	LIGHT - PENDANT
⊕ <sub>⊞</sub>	SWITCH - DIMMER	△	LIGHT - TRACK
⊕ <sub>FC</sub>	SWITCH - FAN CONTROLS	△	LIGHT - FLUORESCENT
⊕	OUTLET - DUPLEX	⊕	LIGHT - WALL MOUNTED
⊕	OUTLET - DUPLEX SWITCHED	⊕	FLOOR DRAIN
⊕ <sub>GF</sub>	OUTLET - GROUND FAULT	⊕	HOSE BIBB
⊕ <sub>WP</sub>	OUTLET - WEATHERPROOF	⊕ <sub>GAS</sub>	GAS OUTLET
⊕	OUTLET - FLOOR/SOFFIT MOUNT	⊕	HYAC - SUPPLY VENT
⊕ <sub>RD</sub>	OUTLET - RANGE OR DRYER	⊕	HYAC - RETURN VENT
⊕	OUTLET - QUAD		
⊕ <sub>SD</sub>	SMOKE DETECTOR		

LOWER LEVEL ELECTRICAL PLAN 1/4"=1'-0"

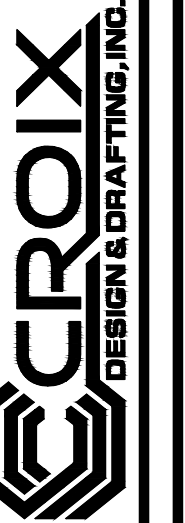
REVISIONS

XXXXXX  
0000  
BY:XX

XXXXXX  
0000  
BY:XX

**SPECIAL NOTICE:**  
CROIX DESIGN AND DRAFTING, INC. ACCEPTS NO RESPONSIBILITY FOR ERRORS AND/OR OMISSIONS. THESE DRAWINGS ARE DESIGN CONCEPT ONLY. EVERY EFFORT HAS BEEN MADE TO PREVENT ERRORS, BUT THE USER MUST VERIFY ALL DIMENSIONS, MATERIALS, AND CONDITIONS BEFORE CONSTRUCTION. THE USER SHALL BE RESPONSIBLE FOR ANY CHANGES OR ADJUSTMENTS REQUIRED DURING CONSTRUCTION. NO REPRESENTATION IS MADE OR IMPLIED FOR ACCURACY.

OFFICE: 763.757.5997  
FAX: 763.757.4383  
ANDOVER, MINNESOTA  
WWW.CROIXDESIGN.COM



BUILT BY:  
SEMLER HOMES

SHEET  
X  
of X  
CADD FILE #  
17193

REVISIONS
XXXXXX
0000
BY:XX
XXXXXX
0000
BY:XX

**SPECIAL NOTICE:**  
 CROIX DESIGN AND DRAFTING, INC. ACCEPTS NO RESPONSIBILITY FOR ERRORS AND/OR OMISSIONS. THESE DRAWINGS ARE DESIGN CONCEPT ONLY. EVERY EFFORT HAS BEEN MADE TO PREVENT ERRORS AND OMISSIONS. THE USER SHALL BE RESPONSIBLE FOR VERIFYING ALL DIMENSIONS AND CONDITIONS. THE USER SHALL BE RESPONSIBLE FOR ANY CHANGES OR ADJUSTMENTS REQUIRED DURING CONSTRUCTION. NO REPRESENTATION IS MADE OR IMPLIED FOR ACCURACY.

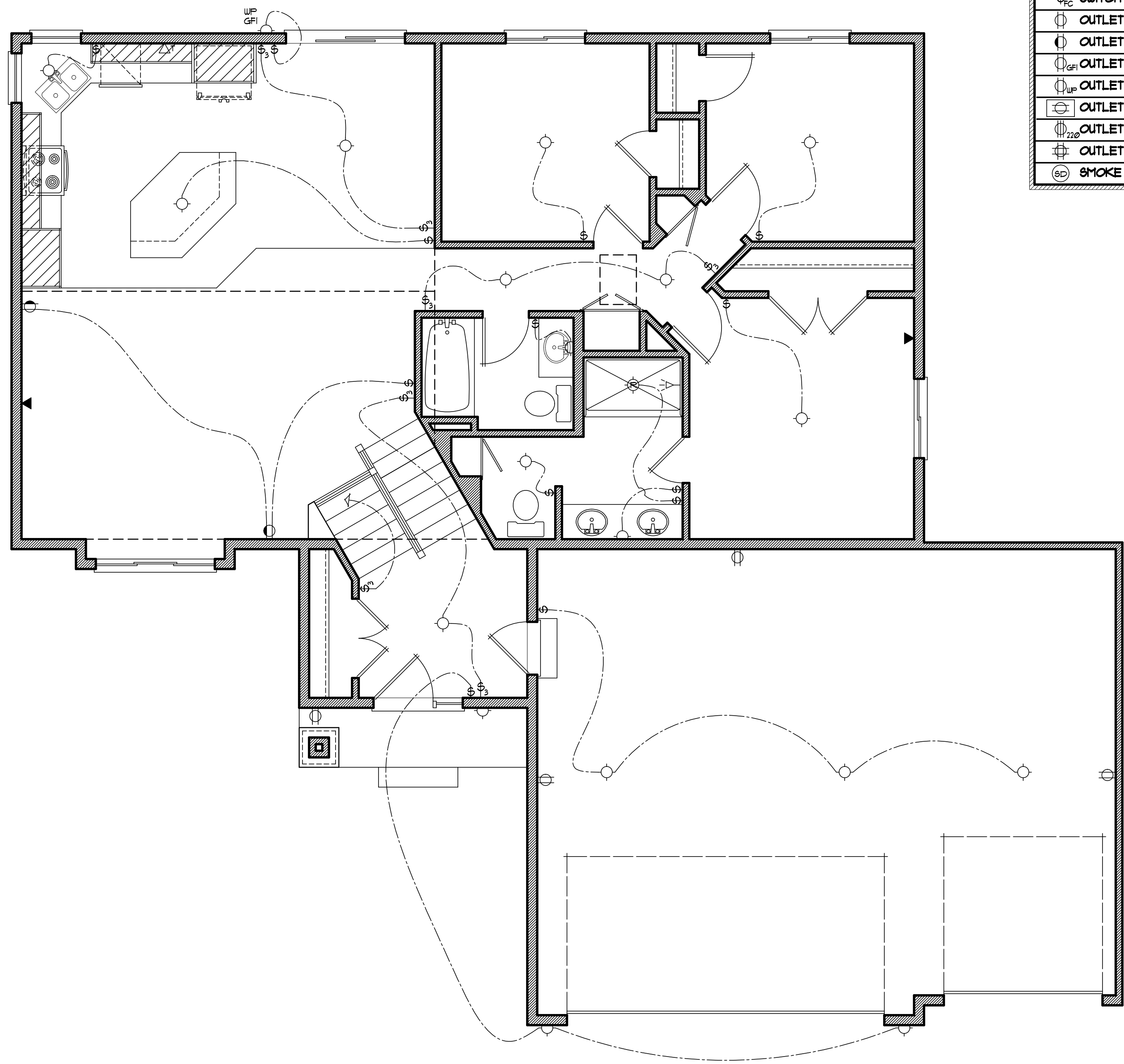
OFFICE: 763.757.5997  
 FAX: 763.757.4383  
 ANDOVER, MINNESOTA  
 WWW.CROIXDESIGN.COM



BUILT BY:  
**SEMLER HOMES**

SHEET  
 of X  
 CADD FILE #  
 17193

ELECTRICAL and MECHANICAL SYMBOLS			
▽	TELEPHONE JACK	☉	EXHAUST FAN
▼	TV/CABLE JACK	○	LIGHT - CEILING FIXTURE
Ⓢ	SWITCH - SINGLE	Ⓢ	LIGHT - RECESSED FIXTURE
Ⓢ <sub>3</sub>	SWITCH - THREE WAY	Ⓢ	LIGHT - RECESSED DIRECTIONAL
Ⓢ <sub>4</sub>	SWITCH - FOUR WAY	Ⓢ	LIGHT - PENDANT
Ⓢ <sub>D</sub>	SWITCH - DIMMER	△	LIGHT - TRACK
Ⓢ <sub>FC</sub>	SWITCH - FAN CONTROLS	△	LIGHT - FLUORESCENT
Ⓢ	OUTLET - DUPLEX	○	LIGHT - WALL MOUNTED
Ⓢ	OUTLET - DUPLEX SWITCHED	Ⓢ	FLOOR DRAIN
Ⓢ <sub>GF</sub>	OUTLET - GROUND FAULT	Ⓢ	HOSE BIBB
Ⓢ <sub>WP</sub>	OUTLET - WEATHERPROOF	Ⓢ	GAS OUTLET
Ⓢ	OUTLET - FLOOR/SOFFIT MOUNT	Ⓢ	HYAC - SUPPLY VENT
Ⓢ	OUTLET - RANGE OR DRYER	Ⓢ	HYAC - RETURN VENT
Ⓢ	OUTLET - QUAD		
Ⓢ <sub>SD</sub>	SMOKE DETECTOR		



MAIN LEVEL ELECTRICAL PLAN 1/4"=1'-0"