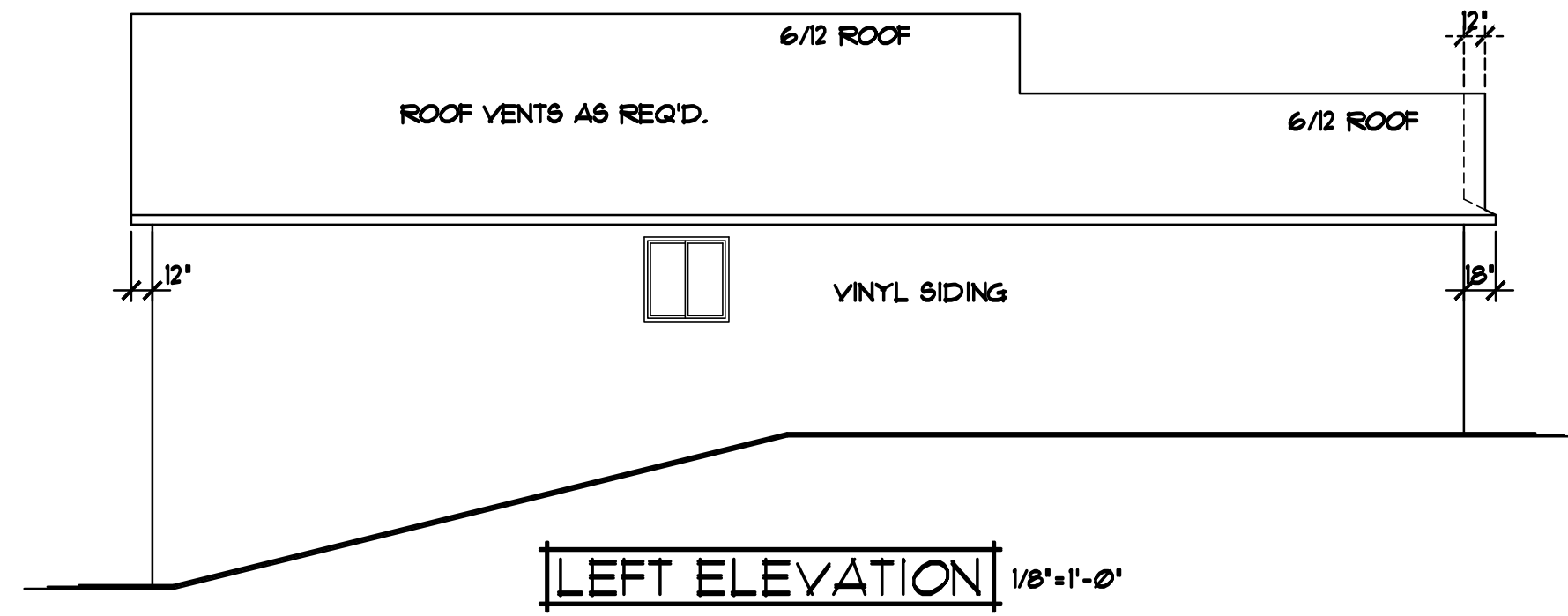
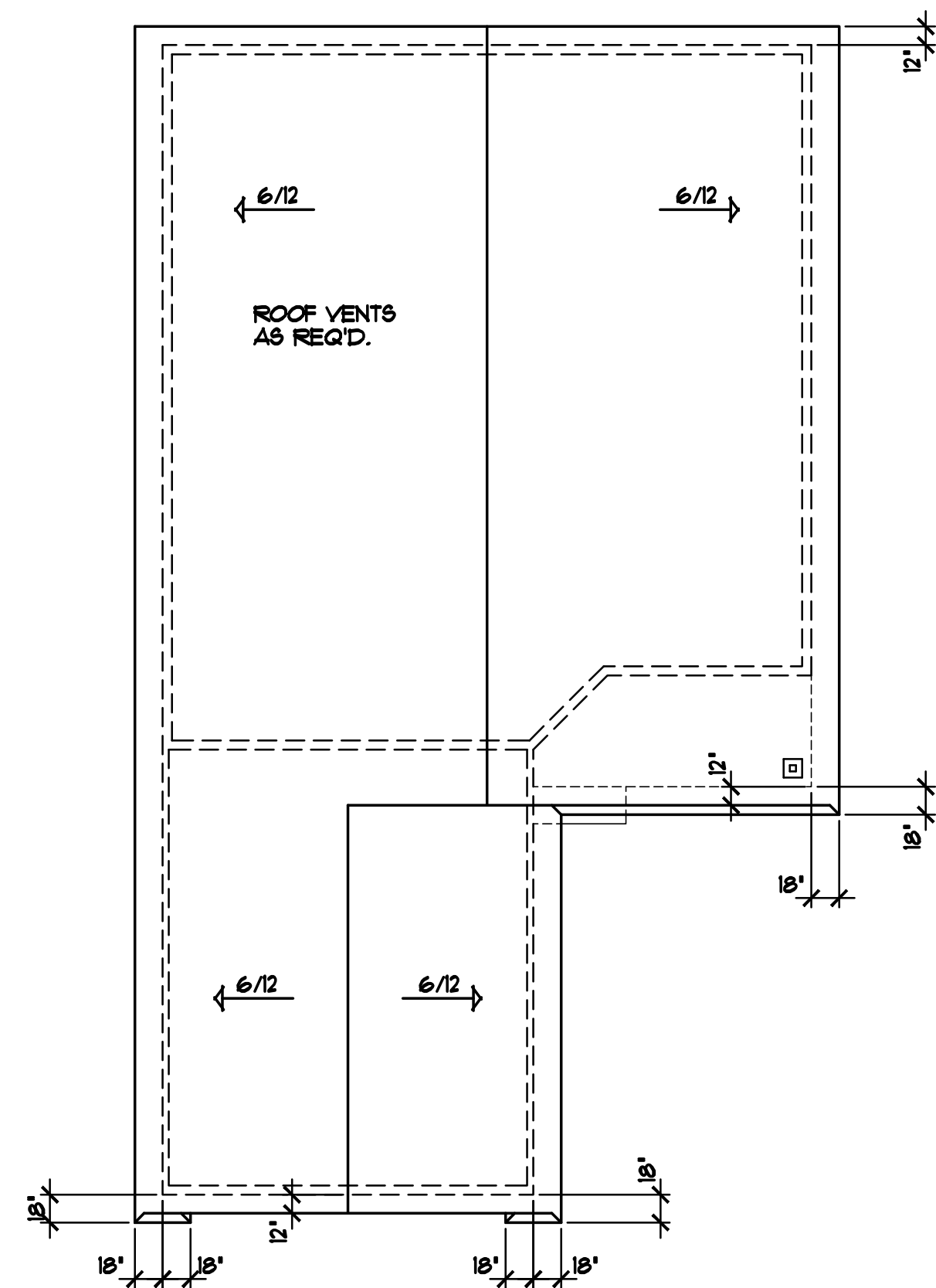


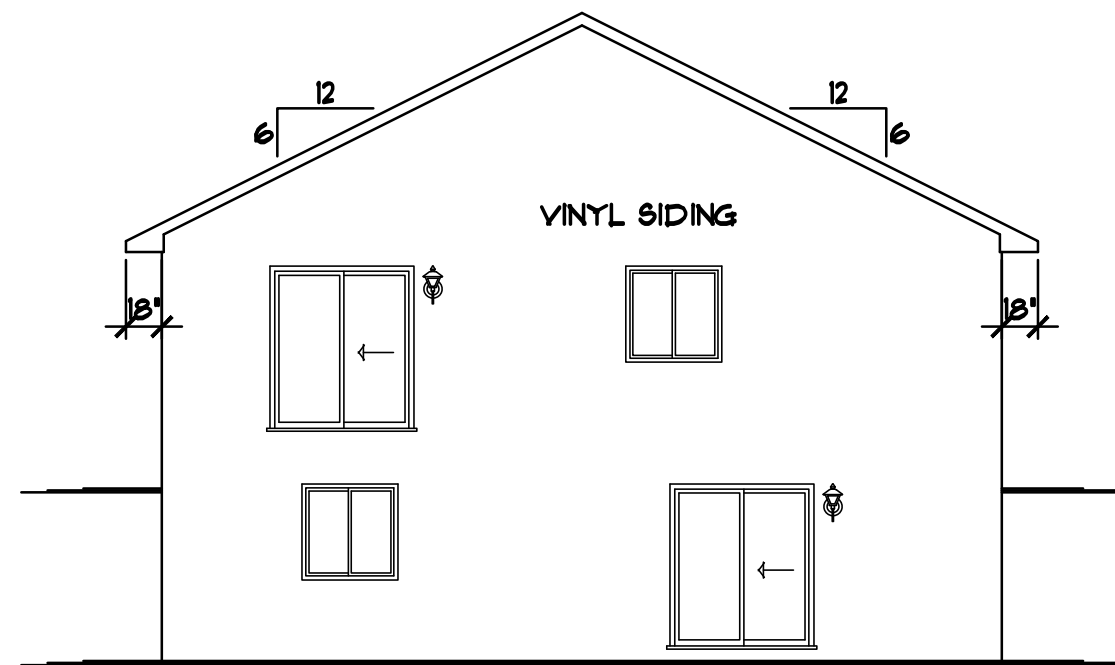
RIGHT ELEVATION 1/8"=1'-0"



LEFT ELEVATION 1/8"=1'-0"

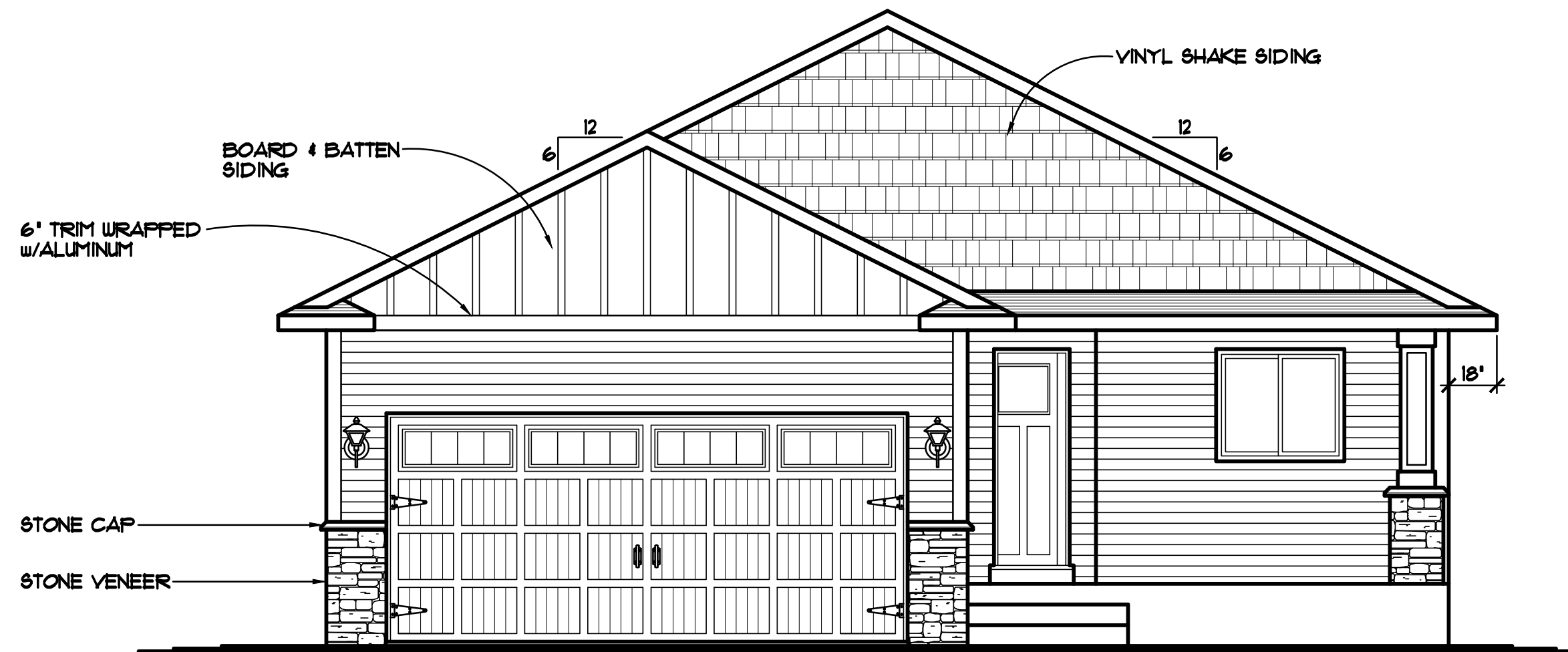


BIRD'S-EYE ROOF PLAN 1/8"=1'-0"



REAR ELEVATION 1/8"=1'-0"

- VECTOR WINDOWS SPEC'D. VERIFY ALL DOOR AND WINDOW ROUGH OPENINGS WITH SUPPLIER
- ALUMINUM SOFFITS & FASCIA
- VINYL SIDING/CORNER TRIM
- STONE VENEER AS SHOWN



FRONT ELEVATION 1/4"=1'-0"

1278 SQ. FT. MAIN LEVEL

16'x10' 430 CARRIAGE HOUSE COLLECTION, STEEL GARAGE DOOR with 587 STOCKBRIDGE WINDOWS

THE:
ST. FRANCIS MODEL
3377 235th AVE NW
LOT 21, BLOCK 5, RUM RIVER BLUFFS
ST. FRANCIS, MN

REVISIONS	BY
143071	N.F.
16162	N.F.

SPECIAL NOTICE: CROIX DESIGN AND DRAFTING, INC. ACCEPTS NO RESPONSIBILITY FOR ERRORS AND/OR OMISSIONS. THESE DRAWINGS ARE DESIGN CONCEPT ONLY. EVERY EFFORT HAS BEEN MADE TO DESIGN ACCURATELY. THE OWNER, GENERAL CONTRACTOR, SUB-CONTRACTORS, AND SUPPLIERS MUST CHECK ALL DETAILS AND DIMENSIONS REQUIRED DURING ACTUAL CONSTRUCTION. NO REPRESENTATION IS MADE OR IMPLIED FOR ACCURACY.

COPYRIGHT NOTICE, ALL RIGHTS RESERVED
THESE ARCHITECTURAL PLANS AND ALL RELATED WORKS ARE PROTECTED BY UNITED STATES COPYRIGHT LAWS, AND MAY NOT BE REPRODUCED OR TRANSMITTED IN ANY FORM OR BY ANY MEANS, WITHOUT THE EXPRESS WRITTEN PERMISSION OF CROIX DESIGN AND DRAFTING, INC.

DESIGN and DRAFTING BY:

ARCHITECTURAL DESIGN and DRAFTING SERVICE • HOME PLAN SERVICE • CUSTOM HOMES • REMODELING • PHONE: 763.757.5997 • ANDOVER, MINNESOTA • WWW.CROIXDESIGN.COM

BUILT BY:

1818 STATION PARKWAY NW ANDOVER, MN 55304
LIC. # 3649
763-754-5578

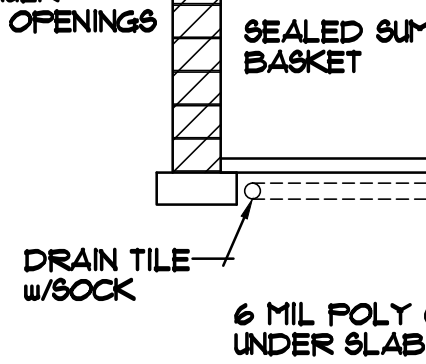
DRAWN	N.F.
CHECKED	XX
DATE:	8/01/2016
SCALE:	AS NOTED
CADD FILE #	16283

24" DIA. SPACE FOR FUTURE FAN (PROVIDE OUTLET & LIGHT)

3" PVC PIPE or EQUAL with "RADON REDUCTION SYSTEM" LABELED • EACH LEVEL • ACCESSIBLE ATTIC SPACE, VERIFY PATH & USE THE LEAST AMOUNT OF ELBOWS AS POSSIBLE • PROVIDE R4 MIN. INSUL. • UNCONDITIONED SPACES

SOLID CAP BLOCK • TOP COURSE & GROUT SOLID WHERE ANCHOR BOLTS ARE USED & BRICK LEDGES

NOTE III POLYURETHANE CAULK • ALL FOUNDATION OPENINGS



PASSIVE RADON MITIGATION SYSTEM

NOTE III PROVIDE 1/2" GYP. BD. • BASEMENT CLG. & ALLOW FOR 80 SQ. FT. MAX OPEN CLG. AREA FOR MECHANICAL, FIRE BLOCK TRUSS SPACE • PERIMETER OF OPEN AREA

NOTE III PROVIDE 2" R10 FOAM BOARD INSULATION • EXTERIOR CONC. FOUNDATION HOUSE WALLS & 1" R1 FOAM BOARD INSULATION • INTERIOR CONC. FOUNDATION HOUSE WALLS (TYP.)

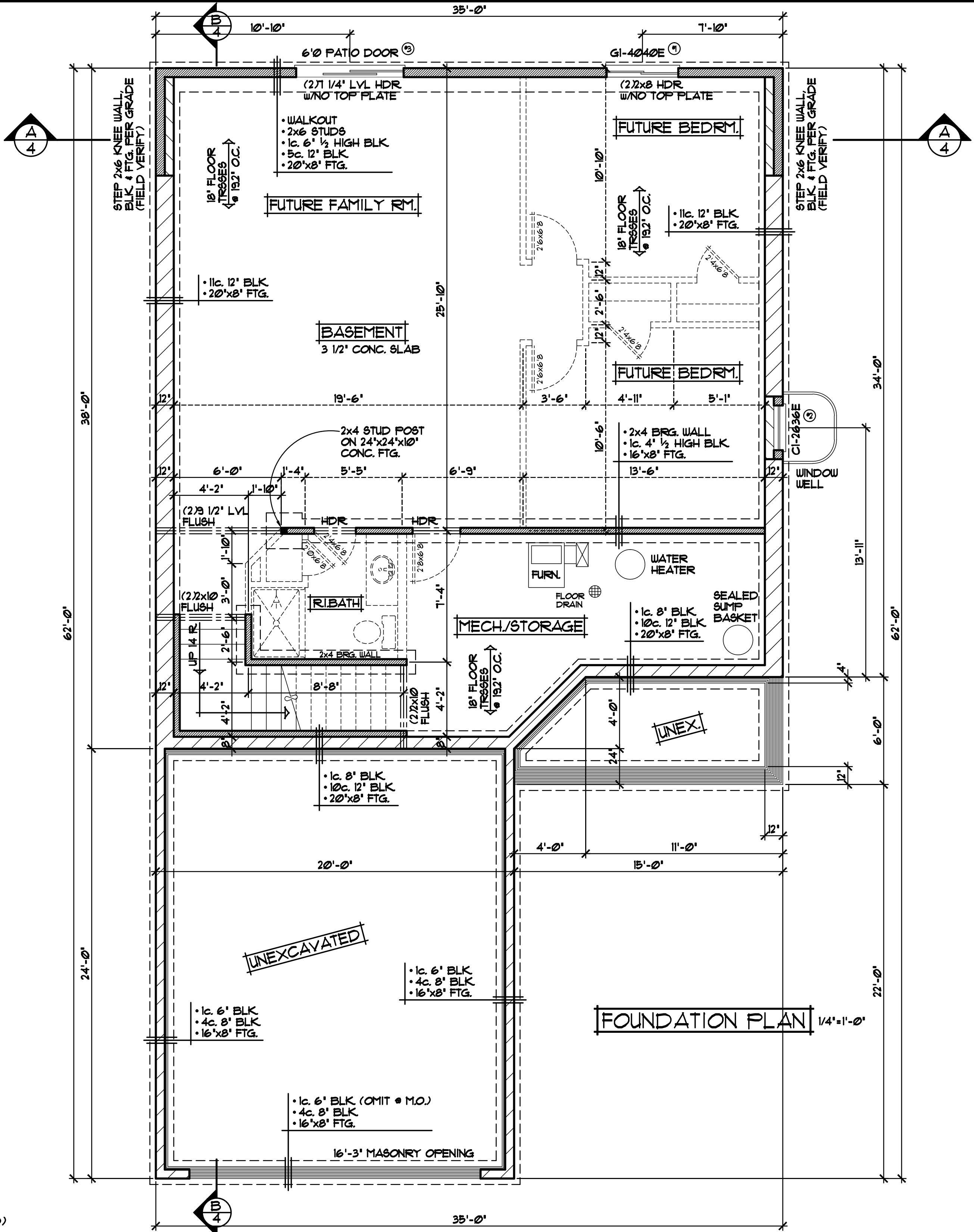
NOTE III VERIFY ALL MECHANICAL EQUIPMENT LOCATIONS, LOCATIONS ON PLAN ARE REPRESENTATION ONLY

NOTE III SOLID CAP BLOCK • TOP COURSE & GROUT SOLID WHERE ANCHOR BOLTS ARE USED & BRICK LEDGES

NOTE III DO NOT HOLD RIM JOIST IN RIM AREA TO BE INSULATED WITH CLOSED CELL SPRAYED FOAM INSULATION (TYP.)

ALL HEIGHT CALCULATIONS FOR FOUNDATIONS ARE BASED ON THE USE OF FULL 8" HIGH BLOCK w/ 3/8" JOINTS. IF MODULAR BLOCK IS USED, CONTRACTORS SHOULD ADJUST HEIGHTS ACCORDINGLY.

NOTE III VECTOR VINYL WINDOWS SPECIFIED VERIFY ALL DOOR & WINDOW ROUGH OPENINGS w/ SUPPLIER (* INDICATES SASH LIMITER REQUIRED)



FOUNDATION PLAN 1/4"=1'-0"

REVISIONS
XXXXXX 0000 BY:XX
XXXXXX 0000 BY:XX

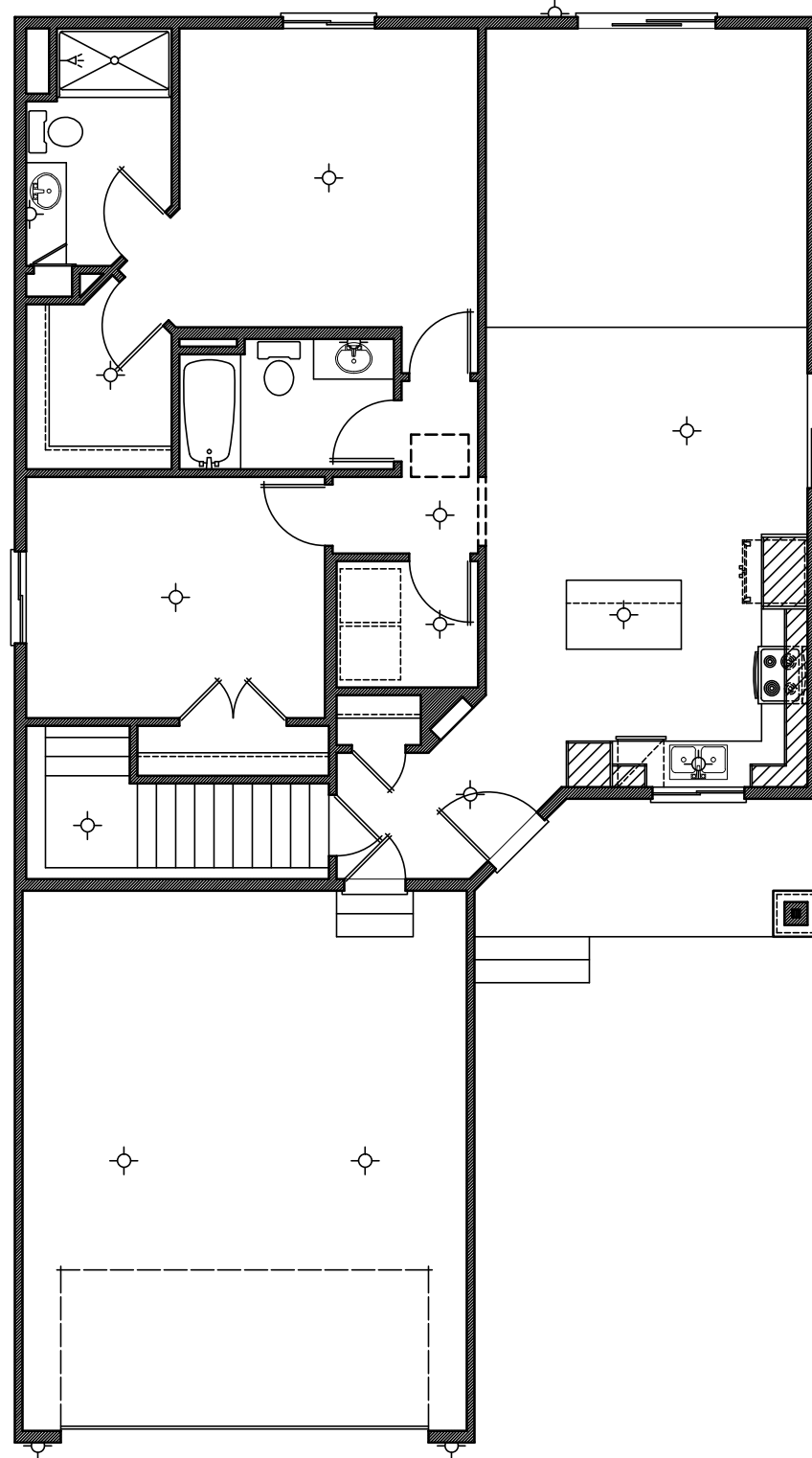
SPECIAL NOTICE:
CROIX DESIGN AND DRAFTING, INC. ACCEPTS NO RESPONSIBILITY FOR ERRORS AND/OR OMISSIONS. THESE DRAWINGS ARE DESIGN CONCEPT ONLY. EVERY EFFORT HAS BEEN MADE TO PREVENT ERRORS AND OMISSIONS. THE USER OF THESE DRAWINGS SHALL BE RESPONSIBLE FOR VERIFYING ALL DIMENSIONS AND CONDITIONS. THE USER SHALL BE RESPONSIBLE FOR ANY CHANGES OR ADJUSTMENTS REQUIRED DURING CONSTRUCTION. NO REPRESENTATION IS MADE OR IMPLIED FOR ACCURACY.

OFFICE: 763.757.5997
FAX: 763.757.4383
ANDOVER, MINNESOTA
WWW.CROIXDESIGN.COM



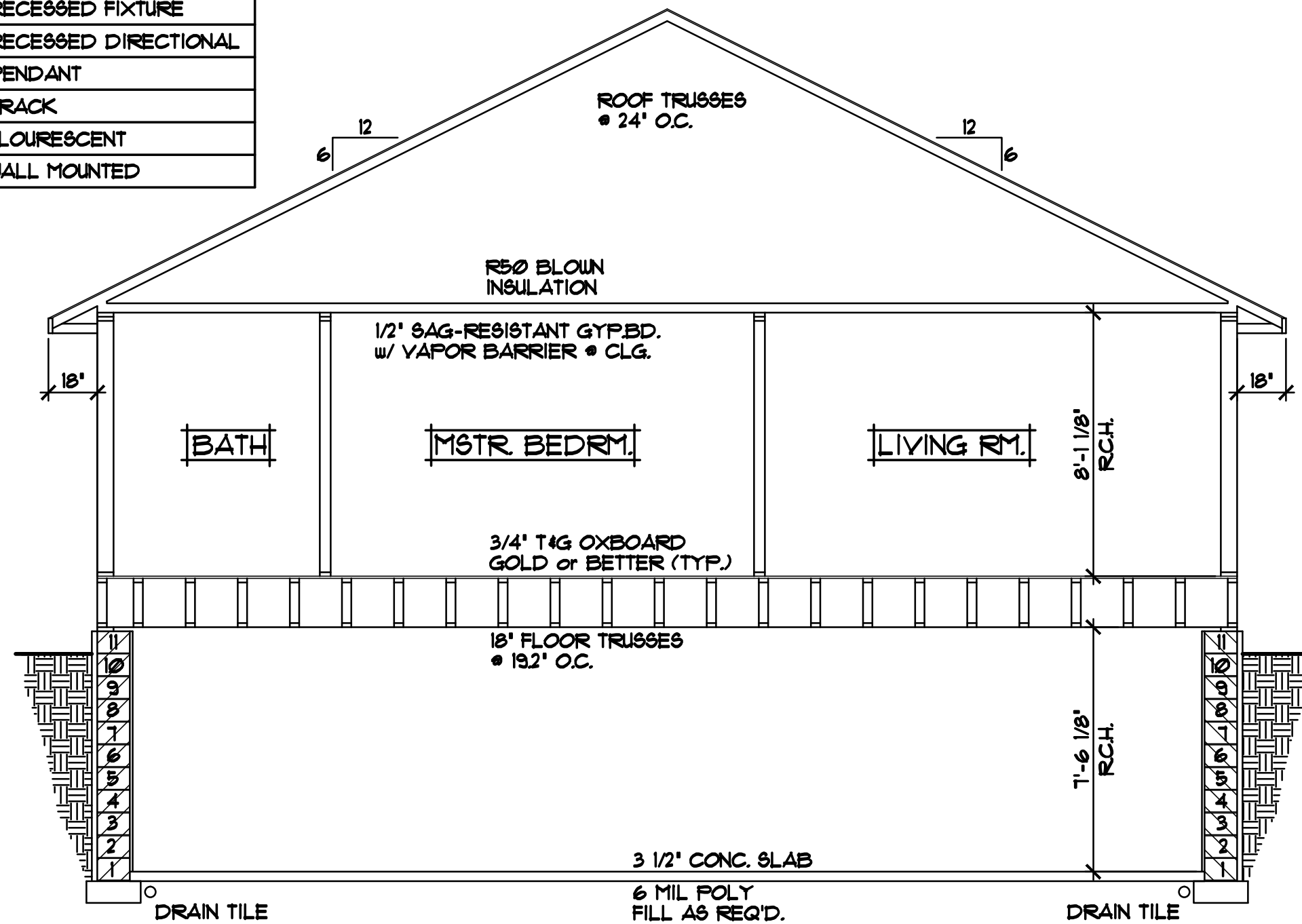
BUILT BY:
SEMLER HOMES

REVISIONS
XX/XX/XX 0000 BY:XX
XX/XX/XX 0000 BY:XX



LIGHT FIXTURE PLAN 1/8"=1'-0"

LIGHT FIXTURE SYMBOLS	
	LIGHT - CEILING FIXTURE
	LIGHT - RECESSED FIXTURE
	LIGHT - RECESSED DIRECTIONAL
	LIGHT - PENDANT
	LIGHT - TRACK
	LIGHT - FLOURESCENT
	LIGHT - WALL MOUNTED



CROSS SECTION "A" 1/4"=1'-0"

- ROOF CONSTRUCTION:**
- PRE-MANUFACTURED ROOF TRUSSES ENGINEERED BY SUPPLIER
 - 1/150 ROOF VENTS AT SOFFITS, 1/150 VENT AT RIDGE
 - AIR CHUTE AT EACH TRUSS SPACE
 - 7/16" OSB ROOF SHEATHING
 - 15# ROOFING FELT
 - ICE & WATER MEMBRANE APPLIED 24" BEYOND EXTERIOR WALL
 - 30 YEAR ARCHITECTURAL SHINGLES

- SOFFIT / FASCIA:**
- 2x6 SUB FASCIA
 - ALUMINUM FASCIA COVER
 - ALUMINUM VENTED SOFFIT

- WALL CONSTRUCTION:**
- TYVEK HOUSE WRAP
 - 7/16" OSB SHEATHING
 - 2x6 STUDS • 16" O.C.
 - R21 FG. BATT INSULATION
 - 4 MIL POLY VAPOR BARRIER
 - 1/2" GYPSUM BOARD AT INTERIOR

- RIM AREA CONSTRUCTION:**
- SEE DETAILS (SHEET 5)

- SILL CONSTRUCTION:**
- 2x6 TREATED SILL PLATE w/SEALER
 - 1/2" ANCHOR BOLTS • 12" O.C.

- FOUNDATION CONSTRUCTION:**
- BLOCK WALL FOUNDATION (SEE FOUNDATION FOR COURSING)
 - INSTALL R10 RIGID FOAM BD. INSULATION TO INTERIOR OF FOUNDATION WALLS
 - INSTALL R10 RIGID FOAM BD. INSULATION TO EXTERIOR OF FOUNDATION WALLS
 - WATERPROOFING

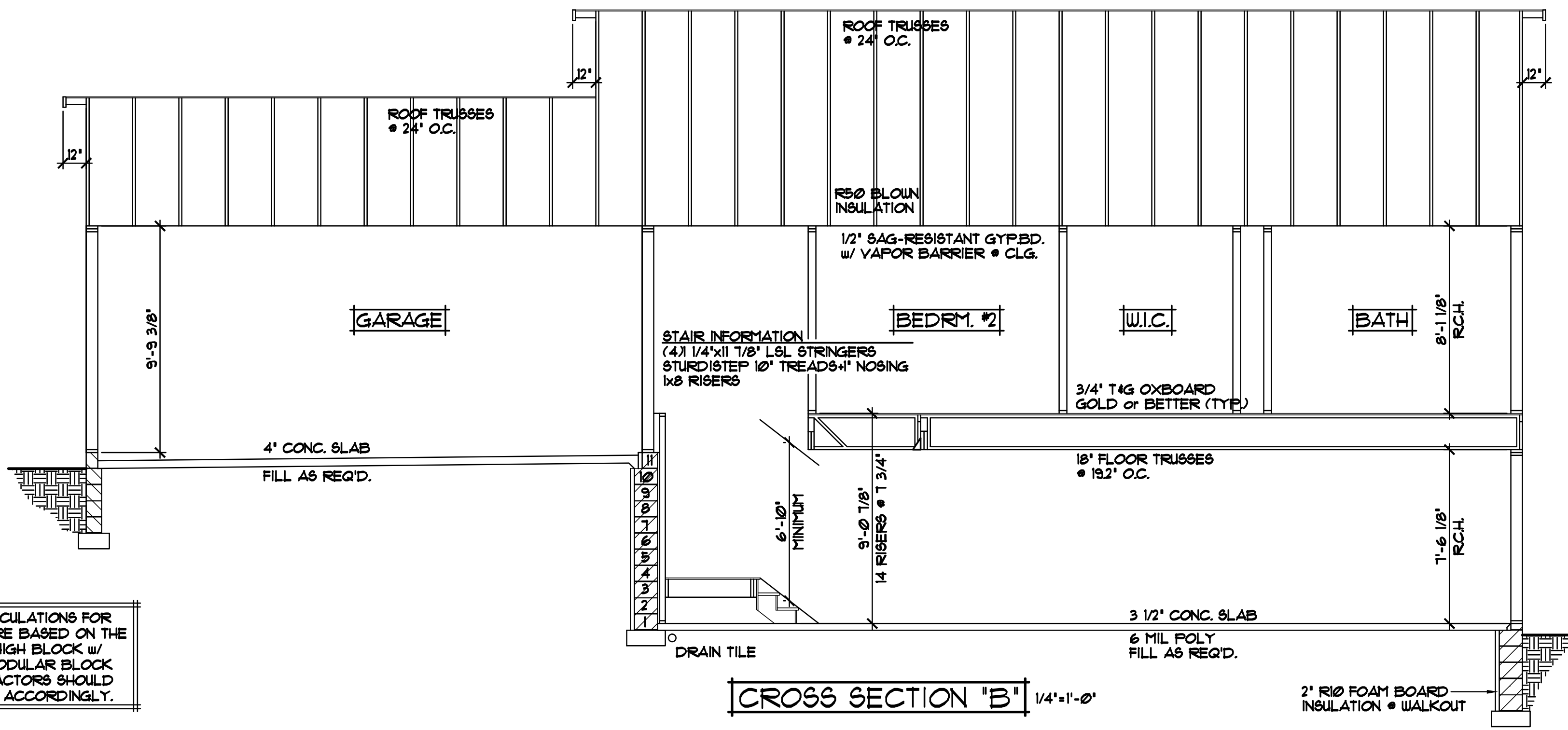
SPECIAL NOTICE:
CROIX DESIGN AND DRAFTING, INC. ACCEPTS NO RESPONSIBILITY FOR ERRORS AND/OR OMISSIONS. THESE DRAWINGS ARE DESIGN CONCEPT ONLY. EVERY EFFORT HAS BEEN MADE TO PREVENT ERRORS, BUT THE USER MUST VERIFY ALL DIMENSIONS AND CONDITIONS BEFORE CONSTRUCTION. THE USER SHALL BE RESPONSIBLE FOR ANY CHANGES OR ADJUSTMENTS REQUIRED DURING CONSTRUCTION. NO REPRESENTATION IS MADE OR IMPLIED FOR ACCURACY.

OFFICE: 763.757.5997
FAX: 763.757.4383
ANDOVER, MINNESOTA
WWW.CROIXDESIGN.COM



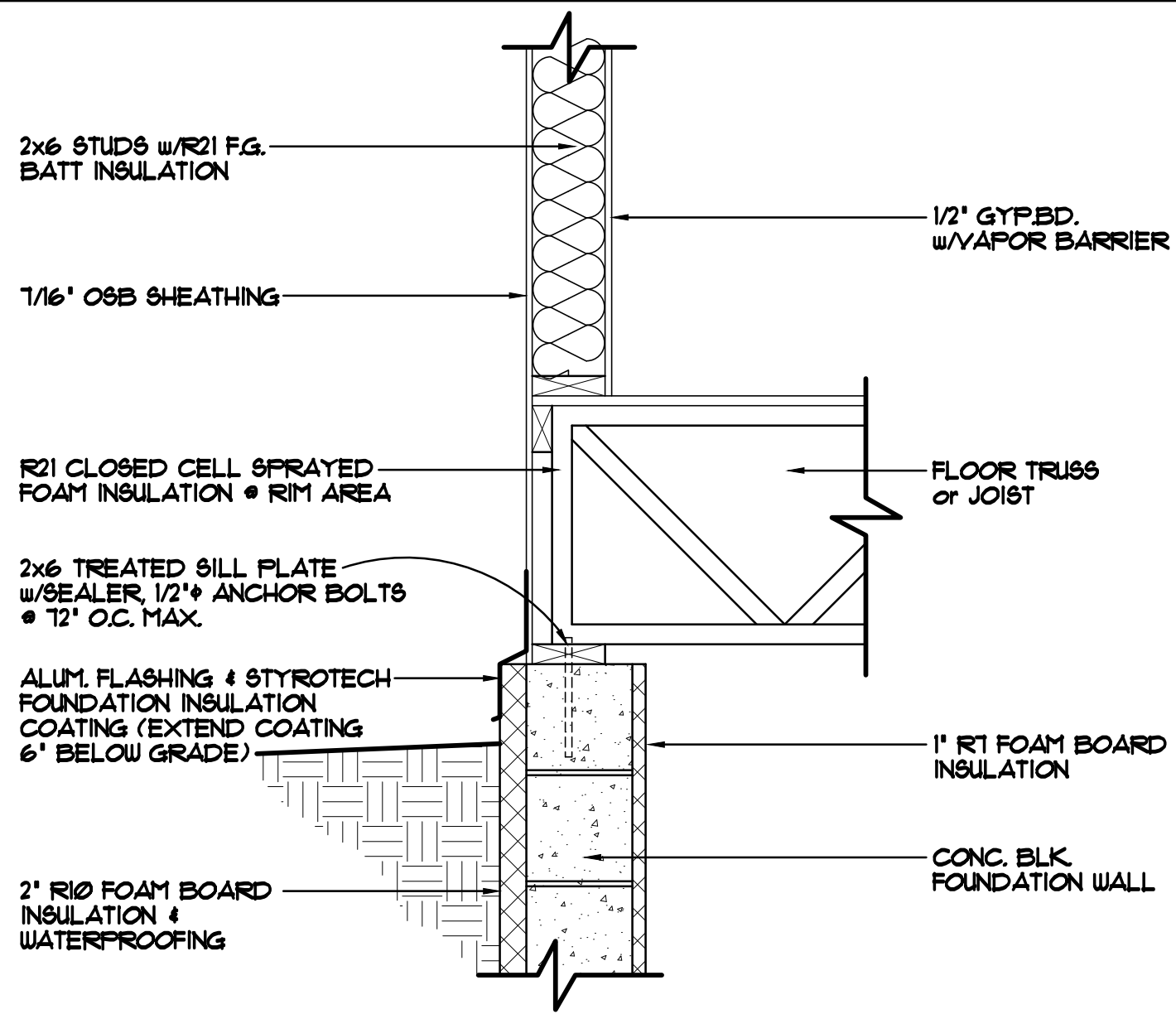
BUILT BY:
SEMLER HOMES

SHEET
4
of 5
CADD FILE #
16283

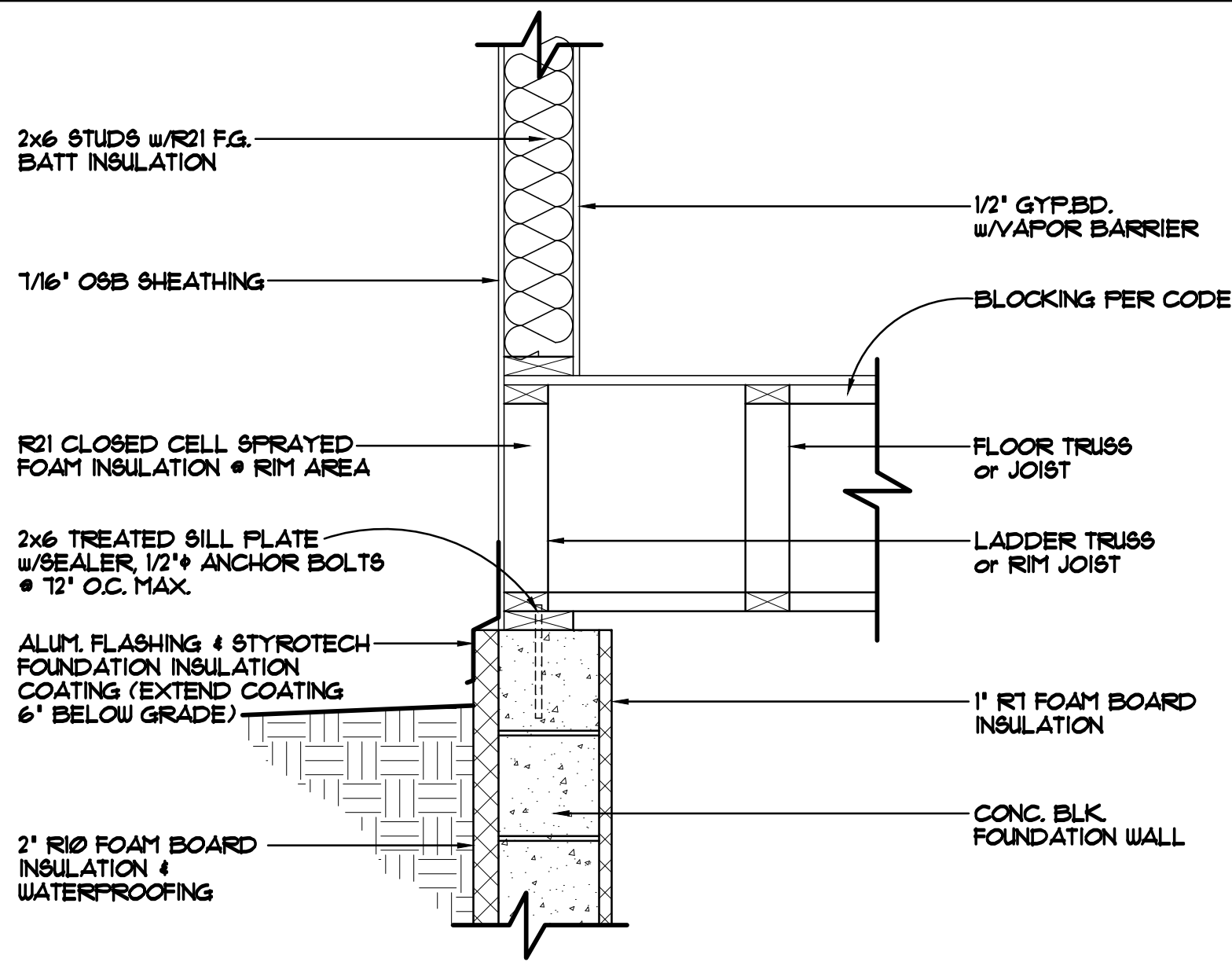


CROSS SECTION "B" 1/4"=1'-0"

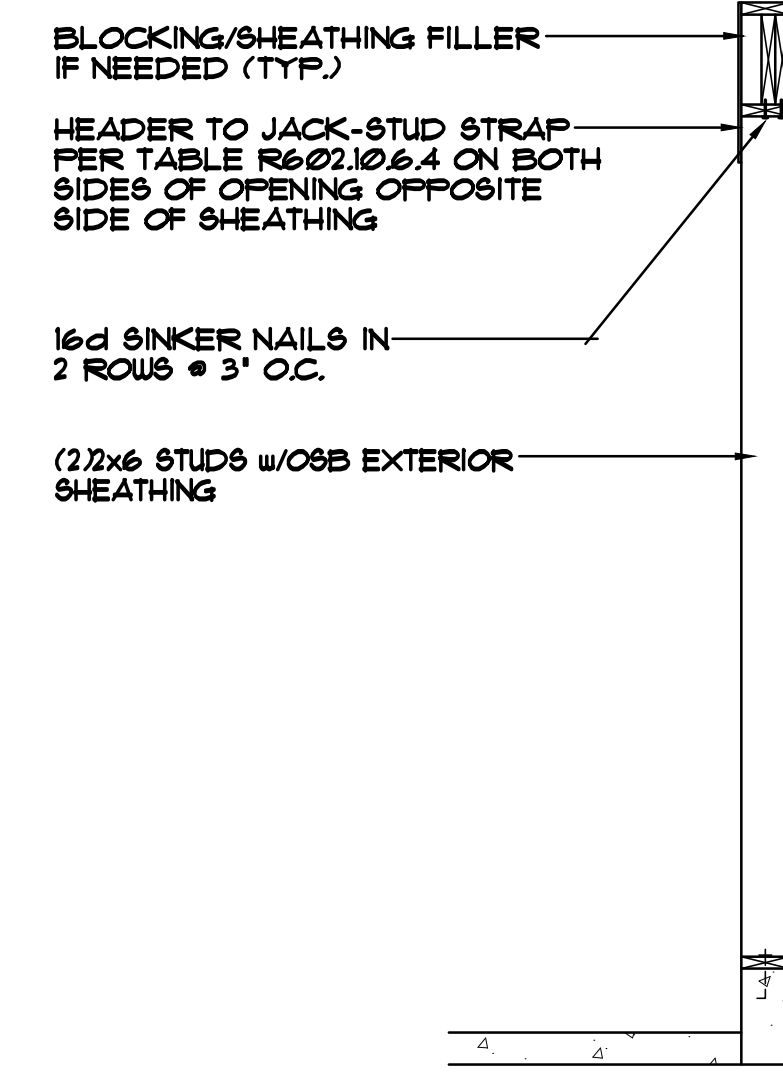
ALL HEIGHT CALCULATIONS FOR FOUNDATIONS ARE BASED ON THE USE OF FULL 8" HIGH BLOCK w/ 3/8" JOINTS. IF MODULAR BLOCK IS USED, CONTRACTORS SHOULD ADJUST HEIGHTS ACCORDINGLY.



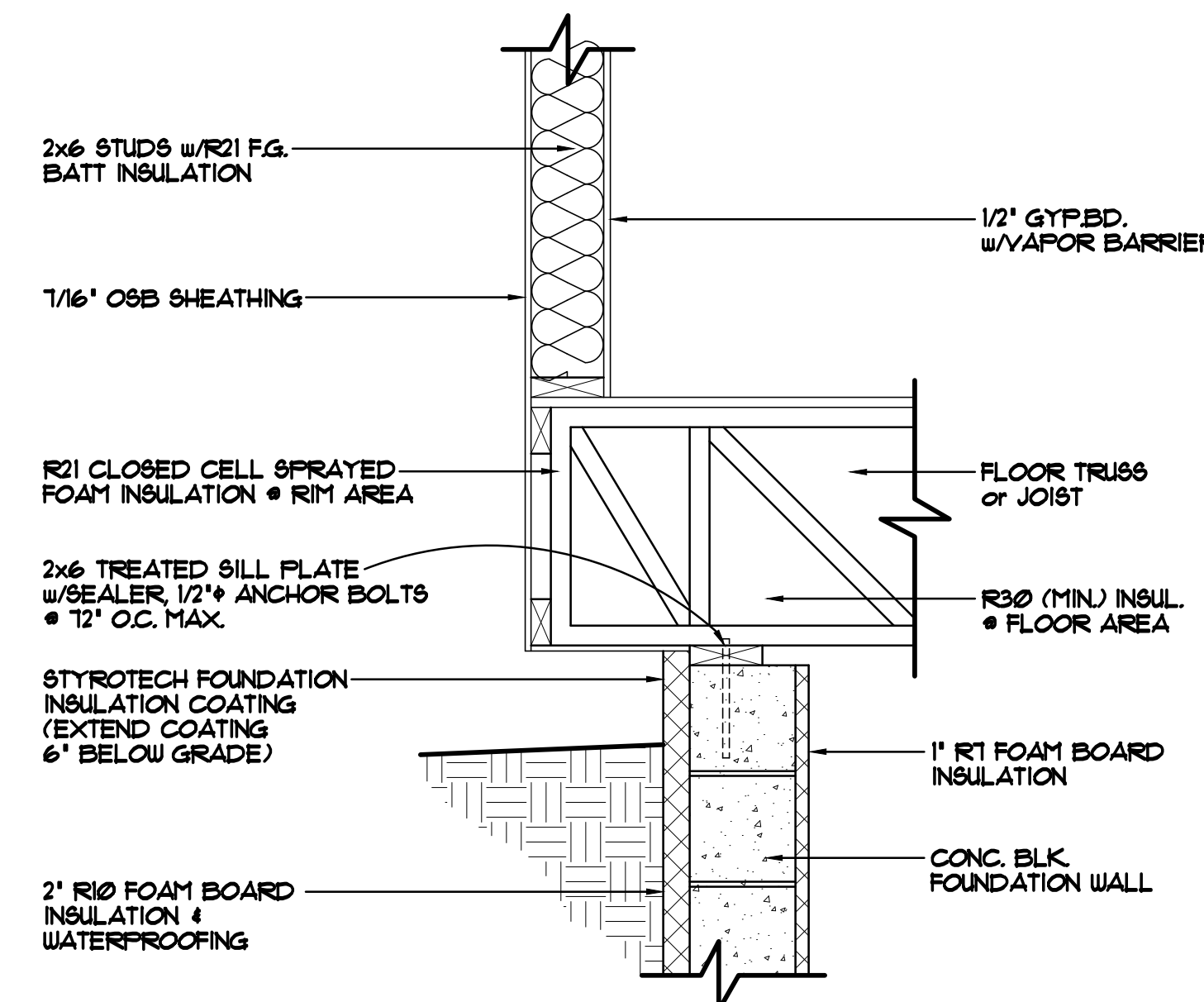
FOUNDATION/RIM AREA DETAIL 1"=1'-0"
STANDARD RIM AREA, TRUSSES/JOISTS PERPENDICULAR TO FOUNDATION WALL



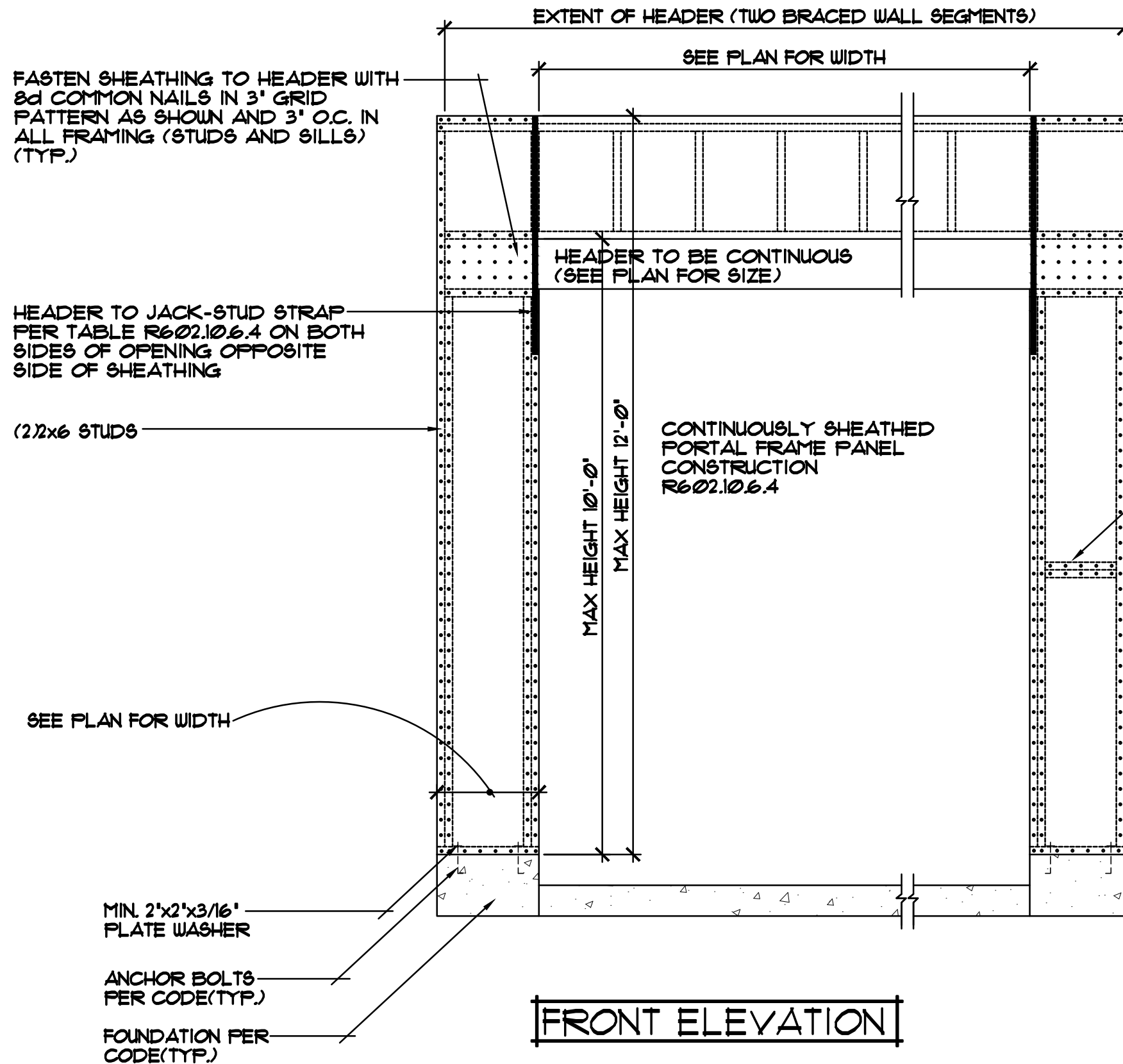
FOUNDATION/RIM AREA DETAIL 1"=1'-0"
STANDARD RIM AREA, TRUSSES/JOISTS PARALLEL TO FOUNDATION WALL



SIDE ELEVATION

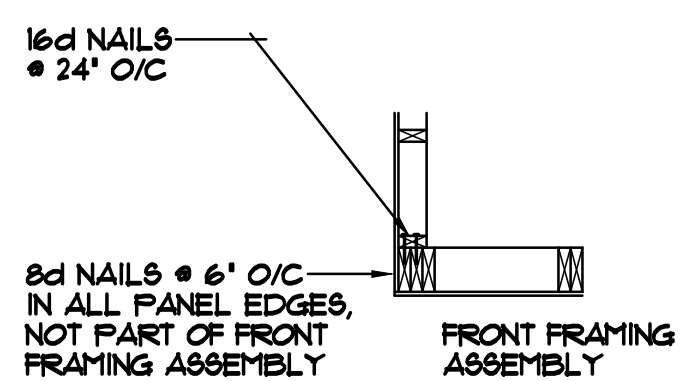


FOUNDATION/RIM AREA DETAIL 1"=1'-0"
CANTILEVERED TRUSSES/JOISTS



FRONT ELEVATION

CORNER FRAMING DETAIL



CONTINUOUSLY SHEATHED PORTAL FRAME PANEL CONSTRUCTION 1/2"=1'-0"

REVISIONS
XX/XX/XX 0000 BY:XX
XX/XX/XX 0000 BY:XX

SPECIAL NOTICE: CROIX DESIGN AND DRAFTING, INC. ACCEPTS NO RESPONSIBILITY FOR ERRORS AND/OR OMISSIONS. THESE DRAWINGS ARE DESIGN CONCEPT ONLY. EVERY EFFORT HAS BEEN MADE TO PREVENT ERRORS, BUT THE USER MUST VERIFY ALL DIMENSIONS AND CONDITIONS BEFORE CONSTRUCTION. THE USER SHALL BE RESPONSIBLE FOR ANY CHANGES OR ADJUSTMENTS REQUIRED DURING CONSTRUCTION. NO REPRESENTATION IS MADE OR IMPLIED FOR ACCURACY.

OFFICE: 763.757.5997
FAX: 763.757.4383
ANDOVER, MINNESOTA
WWW.CROIXDESIGN.COM



BUILT BY:
SEMLER HOMES

SHEET
5
of 5
CADD FILE #
16283