

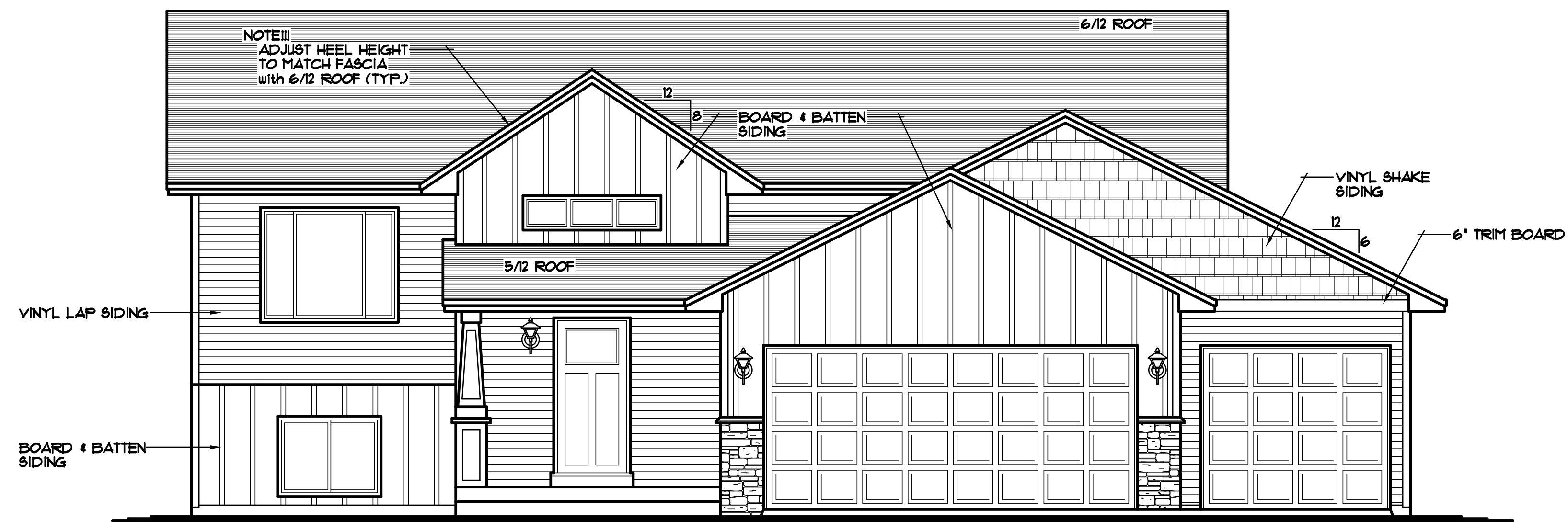
REVISIONS	BY
14088	RB.
15123	NF.
15275	NF.
16135	NF.
16447	NF.

SPECIAL NOTICE:
CROIX DESIGN AND DRAFTING, INC. ACCEPTS NO RESPONSIBILITY FOR ERRORS AND/OR OMISSIONS. THESE DRAWINGS ARE DESIGN CONCEPT ONLY. EVERY EFFORT HAS BEEN MADE TO DESIGN ACCURATELY. THE OWNER, GENERAL CONTRACTOR, SUB-CONTRACTORS, AND SUPPLIERS MUST CHECK ALL DETAILS AND DIMENSIONS AND BE RESPONSIBLE FOR ANY CHANGES OR ADJUSTMENTS REQUIRED DURING ACTUAL CONSTRUCTION. NO REPRESENTATION IS MADE OR IMPLIED FOR ACCURACY.

COPYRIGHT NOTICE, ALL RIGHTS RESERVED
THESE ARCHITECTURAL PLANS AND ALL RELATED WORKS ARE PROTECTED BY UNITED STATES COPYRIGHT LAWS, AND MAY NOT BE REPRODUCED OR TRANSMITTED IN ANY FORM OR BY ANY MEANS, WITH OR WITHOUT THE EXPRESS WRITTEN PERMISSION OF CROIX DESIGN AND DRAFTING, INC. CROIX DESIGN AND DRAFTING, INC.

- VECTOR WINDOW SIZES SPEC'D.
- VINYL SIDING/CORNER TRIM
- ALUMINUM SOFFITS & FASCIA
- STONE VENEER WHERE SHOWN

NOTE III
PROVIDE STANDARD ENERGY HEEL @ MAIN LEVEL ROOF TRUSSES (TYP.)



FRONT ELEVATION 1/4" = 1'-0"
1203 SQ. FT. MAIN LEVEL

THE:
ISANTI MODEL
1306 IRONWOOD COURT SW
LOT 6, BLOCK 7, RUM RIVER MEADOWS 2nd ADDITION
ISANTI, MN

© COPYRIGHT 2009-2011 NOTICE, ALL RIGHTS RESERVED
CROIX DESIGN AND DRAFTING, INC.

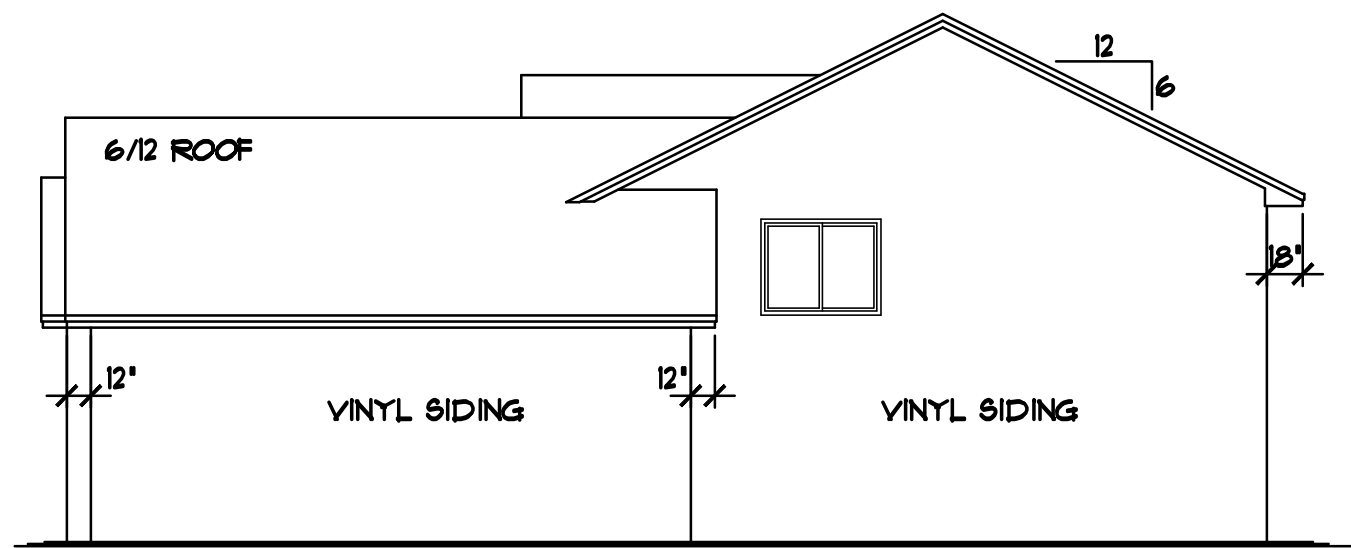
DESIGN AND DRAFTING BY:

ARCHITECTURAL DESIGN AND DRAFTING SERVICE •
HOME PLAN SERVICE • CUSTOM HOMES • REMODELING •
PHONE: 763.757.5997 • ANDOVER, MINNESOTA •
WWW.CROIXDESIGN.COM

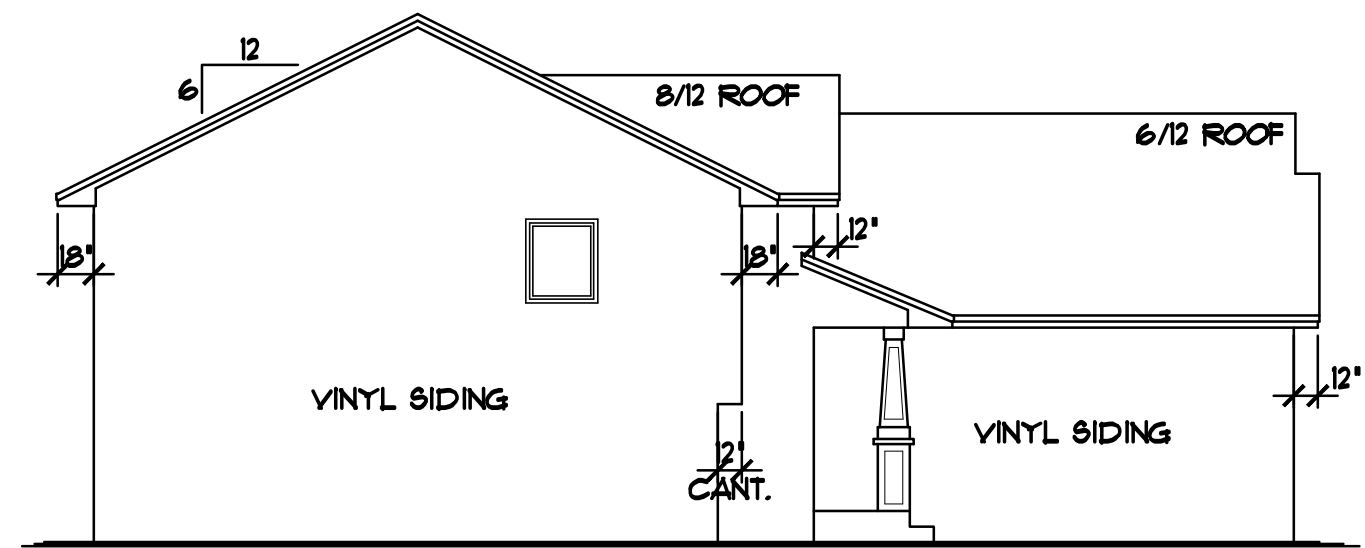
BUILT BY:

163-154-5578
L.C. #0023649

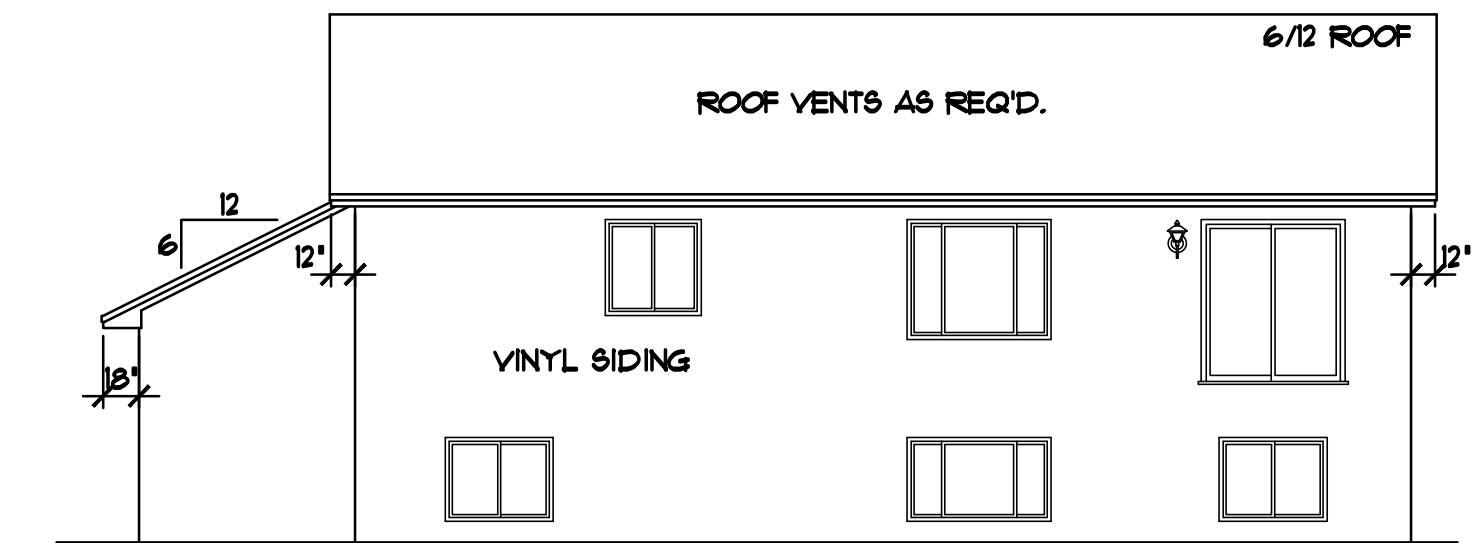
DRAIN	NF.
CHECKED	XX.
DATE:	1/26/2017
SCALE:	AS NOTED
CADD FILE #	11004
SHEET	1 of 6



RIGHT ELEVATION 1/8"=1'-0"



LEFT ELEVATION 1/8"=1'-0"



REAR ELEVATION 1/8"=1'-0"

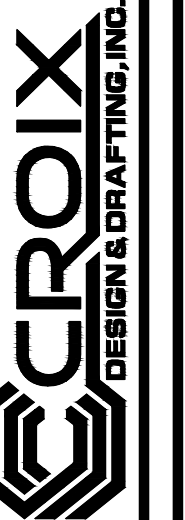
REVISIONS

XXXXXX
0000
BY:XX

XXXXXX
0000
BY:XX

SPECIAL NOTICE:
CROIX DESIGN AND DRAFTING, INC. ACCEPTS NO RESPONSIBILITY FOR ERRORS AND/OR OMISSIONS. THESE DRAWINGS ARE DESIGN CONCEPT ONLY. EVERY EFFORT HAS BEEN MADE TO PREPARE THESE DRAWINGS ACCURATELY. HOWEVER, THE USER SHALL BE RESPONSIBLE FOR VERIFYING ALL DIMENSIONS AND CONDITIONS BEFORE CONSTRUCTION. THE USER SHALL BE RESPONSIBLE FOR OBTAINING ALL NECESSARY PERMITS AND CHECKS. THE USER SHALL BE RESPONSIBLE FOR ANY CHANGES OR ADJUSTMENTS REQUIRED DURING CONSTRUCTION. NO REPRESENTATION IS MADE OR IMPLIED FOR ACCURACY.

OFFICE: 763.757.5997
FAX: 763.757.4383
ANDOVER, MINNESOTA
WWW.CROIXDESIGN.COM



BUILT BY:
SEMLER HOMES

SHEET
2
OF 6
CADD FILE #
11004

REVISIONS	
XXXXXX	0000
BY:XX	
XXXXXX	0000
BY:XX	

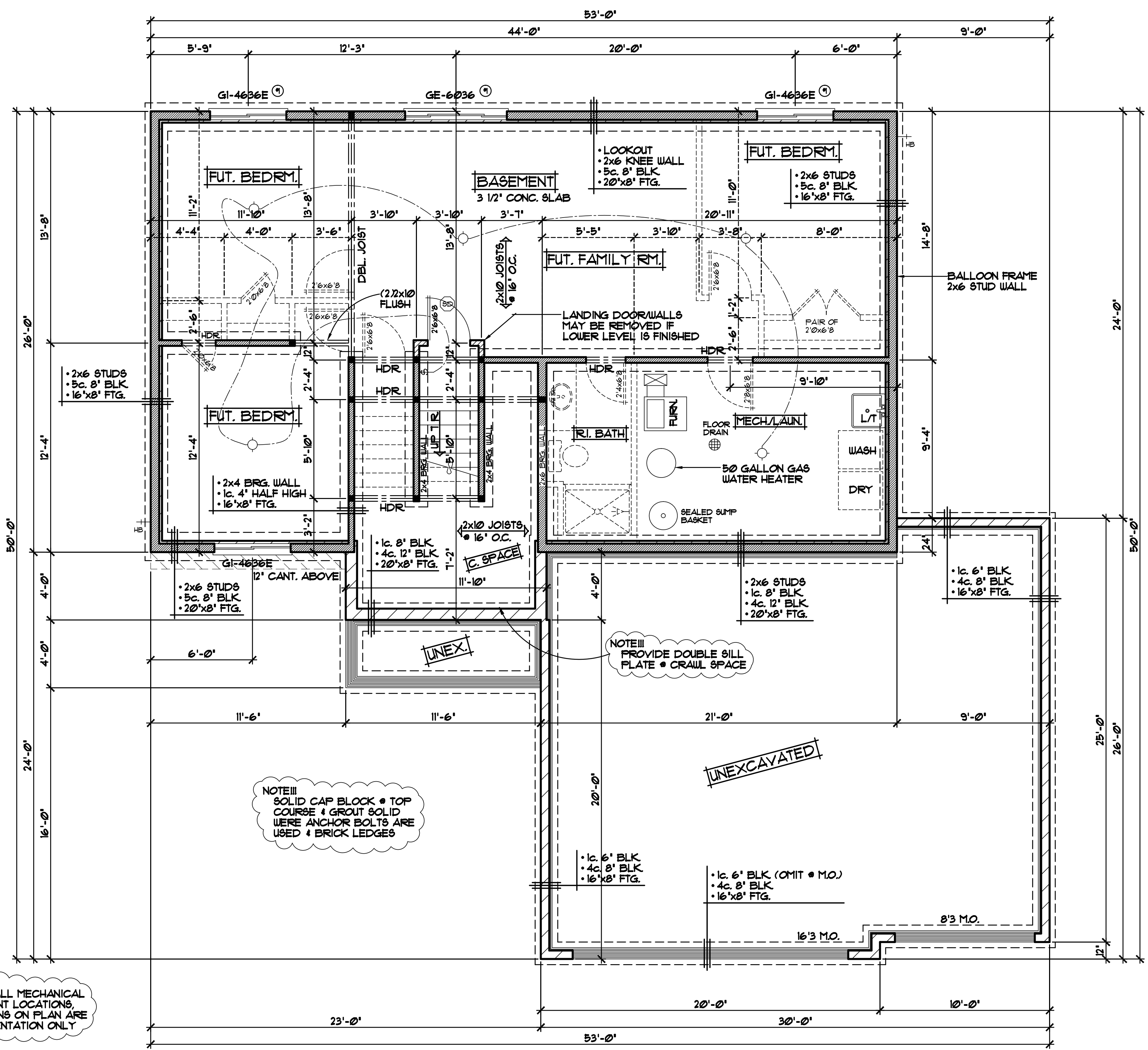
SPECIAL NOTICE:
CROIX DESIGN AND DRAFTING, INC. ACCEPTS NO RESPONSIBILITY FOR ERRORS AND/OR OMISSIONS. THESE DRAWINGS ARE DESIGN CONCEPT ONLY. EVERY EFFORT HAS BEEN MADE TO PREVENT ERRORS, BUT THE USER SHALL BE RESPONSIBLE FOR VERIFYING ALL DIMENSIONS AND CONDITIONS BEFORE CONSTRUCTION. THE USER SHALL BE RESPONSIBLE FOR ANY CHANGES OR ADJUSTMENTS REQUIRED DURING CONSTRUCTION. NO REPRESENTATION IS MADE OR IMPLIED FOR ACCURACY.

OFFICE: 763.757.5997
FAX: 763.757.4383
ANDOVER, MINNESOTA
WWW.CROIXDESIGN.COM



BUILT BY:
SEMLER HOMES

SHEET
3
of 6
CADD FILE #
11004



NOTE III
PROVIDE 2" R10 FOAM BOARD INSULATION • EXTERIOR CONC. FOUNDATION HOUSE WALLS

NOTE III
ALL FOOTINGS SHALL HAVE A COMPRESSIVE STRENGTH OF 2500 PSI WITH APPROVED ADMIXTURE THAT PROVIDES WATER AND VAPOR RESISTANCE EQUAL TO 5000 PSI (MIN.)

MECH. NOTES III
FURNACE: CARRIER MODEL 58MCE060-112 60000 BTU, 93 % EFFICIENT
A/C: CARRIER MODEL ACA324-003 2 TON, 13 SEER
ENERGY RECOVERY VENTILATOR: RENEWAIRE MODEL EV130, 150 CFM
WATER HEATER: AO SMITH MODEL ECT-52 52 GALLON, ELECTRIC

NOTE III
SOLID CAP BLOCK • TOP COURSE & GROUT SOLID WHERE ANCHOR BOLTS ARE USED & BRICK LEDGES

NOTE III
VERIFY ALL MECHANICAL EQUIPMENT LOCATIONS, LOCATIONS ON PLAN ARE REPRESENTATION ONLY

ALL HEIGHT CALCULATIONS FOR FOUNDATIONS ARE BASED ON THE USE OF FULL 8" HIGH BLOCK WITH 3/8" JOINTS. IF MODULAR BLOCK IS USED, CONTRACTORS SHOULD ADJUST HEIGHTS ACCORDINGLY

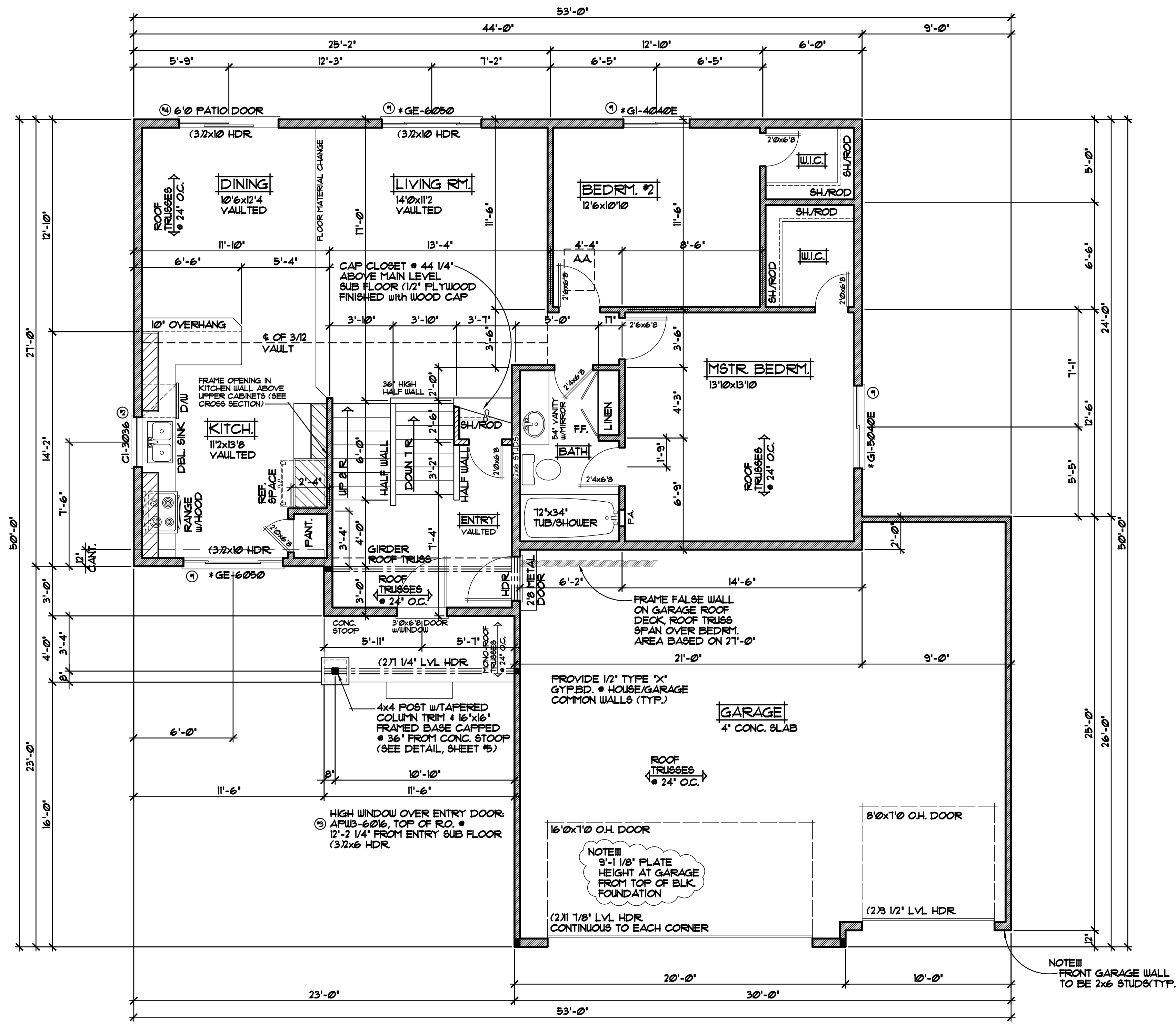
LOWER LEVEL PLAN 1/4"=1'-0"

NOTE III
ALL WDW/DOOR OPENINGS TO HAVE (2)2x10 #2 GRADE HDR or BETTER (UNO.)

NOTE III
VECTOR VINYL WINDOWS SPECIFIED VERIFY ALL DOOR & WINDOW ROUGH OPENINGS w/SUPPLIER (* INDICATES SASH LIMITER REQUIRED)

WINDOW and DOOR PERFORMANCE DATA
U-VALUE / SHGC

- ① GLIDER UNIT
U-VALUE = 0.30
SHGC = 0.34
- ② CASEMENT UNIT
U-VALUE = 0.29
SHGC = 0.30
- ③ FIXED UNIT
U-VALUE = 0.28
SHGC = 0.31
- ④ SLIDING PATIO DOOR
U-VALUE = 0.28
SHGC = 0.34



MAIN LEVEL FLOOR PLAN 1/4" = 1'-0"
1203 SQ. FT.

NOTE III
ALL WDW/DOOR OPENINGS
TO HAVE (2)2x10 #2 GRADE
HDR OR BETTER (U.N.O.)

NOTE III
VECTOR VINYL WINDOWS SPECIFIED
VERIFY ALL DOOR & WINDOW ROUGH
OPENINGS W/SUPPLIER
(* INDICATES SASH LIMITER REQUIRED)

REVISIONS
XXXXXX 0000 BY:XX
XXXXXX 0000 BY:XX

SPECIAL NOTICE:
CROIX DESIGN AND DRAFTING, INC. ACCEPTS NO RESPONSIBILITY FOR ERRORS AND/OR OMISSIONS. THESE DRAWINGS ARE DESIGN CONCEPT ONLY. EVERY EFFORT HAS BEEN MADE TO PREPARE THESE DRAWINGS ACCURATELY. THE USER SHALL BE RESPONSIBLE FOR VERIFYING ALL DIMENSIONS AND BEING RESPONSIBLE FOR ANY CHANGES OR ADJUSTMENTS REQUIRED DURING ACTUAL CONSTRUCTION. NO REPRESENTATION IS MADE OR IMPLIED FOR ACCURACY.

OFFICE: 763.757.5997
FAX: 763.757.4383
ANDOVER, MINNESOTA
WWW.CROIXDESIGN.COM

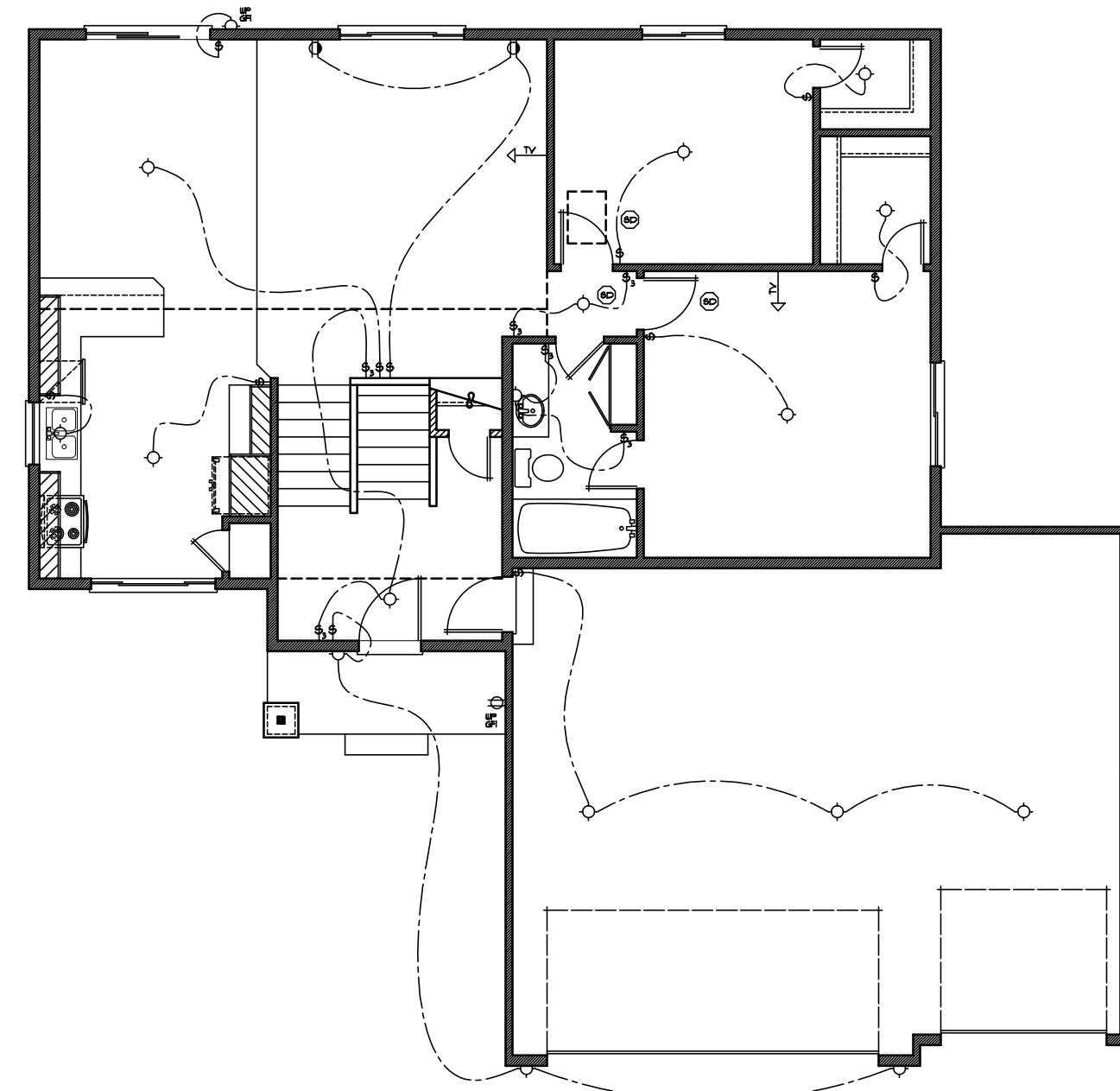


BUILT BY:
SEMLER HOMES

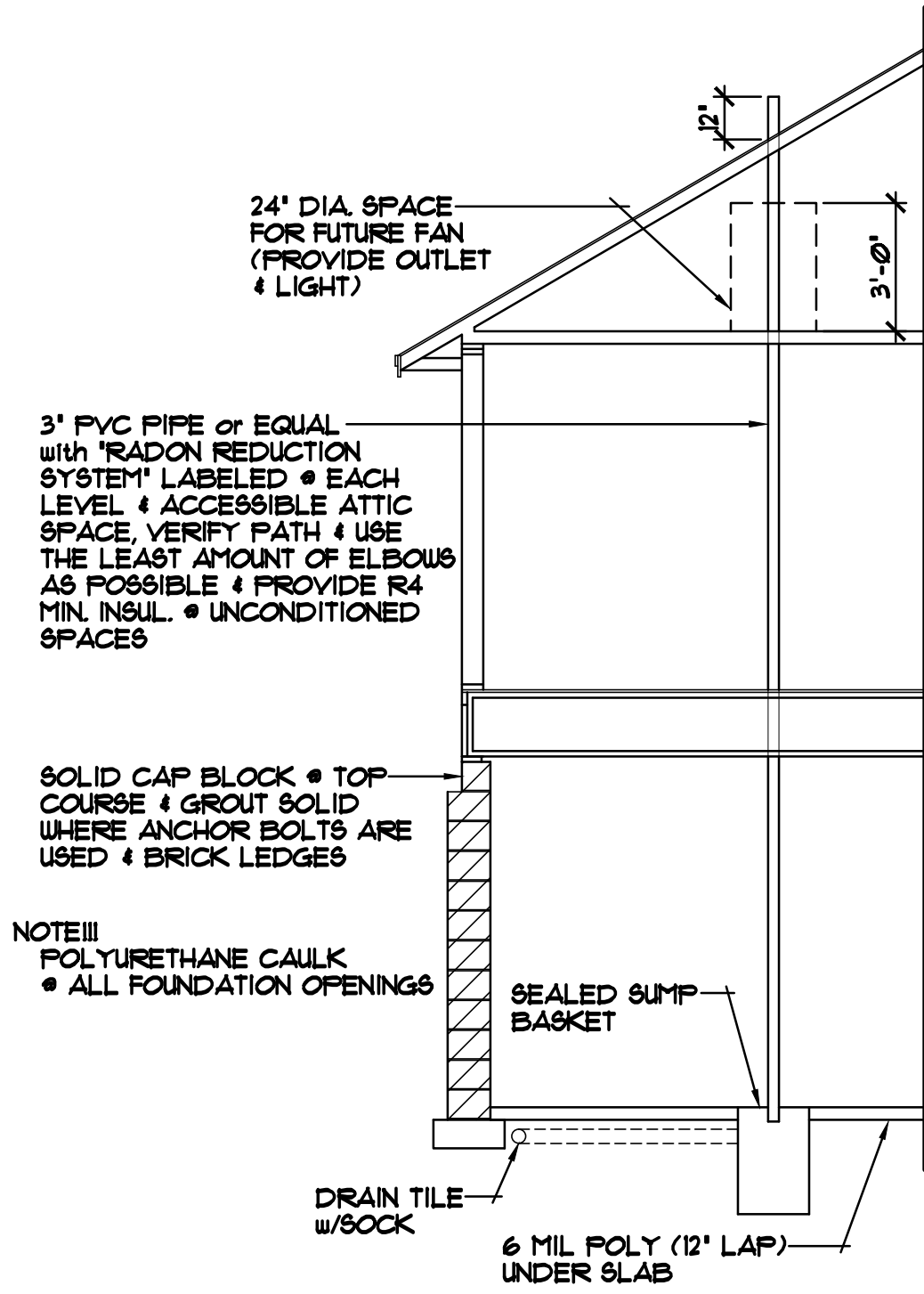
ELECTRICAL and MECHANICAL SYMBOLS	
▽ TELEPHONE JACK	☉ EXHAUST FAN
▼ DATA (COMPUTER) JACK	○ LIGHT - CEILING FIXTURE
Ⓢ SWITCH - SINGLE	Ⓢ LIGHT - RECESSED FIXTURE
Ⓢ ₃ SWITCH - THREE WAY	Ⓢ ₃ LIGHT - RECESSED DIRECTIONAL
Ⓢ ₄ SWITCH - FOUR WAY	Ⓢ ₄ LIGHT - PENDANT
Ⓢ _D SWITCH - DIMMER	Ⓢ _D LIGHT - TRACK
Ⓢ _{FC} SWITCH - FAN CONTROLS	Ⓢ _{FC} LIGHT - FLOURESCENT
Ⓢ ₂ OUTLET - DUPLEX	Ⓢ ₂ LIGHT - WALL MOUNTED
Ⓢ ₂ OUTLET - DUPLEX SWITCHED	Ⓢ ₂ FLOOR DRAIN
Ⓢ _{GF} OUTLET - GROUND FAULT	Ⓢ _{GF} HOSE BIBB
Ⓢ _{WP} OUTLET - WEATHERPROOF	Ⓢ _{WP} GAS OUTLET
Ⓢ _{FM} OUTLET - FLOOR/SOFFIT MOUNT	Ⓢ _{FM} HVAC - SUPPLY VENT
Ⓢ _{RD} OUTLET - RANGE OR DRYER	Ⓢ _{RD} HVAC - RETURN VENT
Ⓢ _Q OUTLET - QUAD	
Ⓢ _{SD} SMOKE DETECTOR	

MECHANICAL & ELECTRICAL NOTES:

- PLACEMENT OF MECHANICAL COMPONENTS WILL BE DETERMINED BY BUILDING CODES AND MAY VARY FROM THAT SHOWN
- ELECTRICAL TO BE PROVIDED TO CODE. LOCATIONS OF OUTLETS MAY VARY FROM THAT SHOWN. UPGRADES AND ADDITIONS MUST BE SPECIFIED ON PLANS
- SMOKE DETECTORS TO BE INTERCONNECTED, HARDWIRED, WITH BATTERY BACK-UP. ONE PER LEVEL AND IN EACH BEDROOM



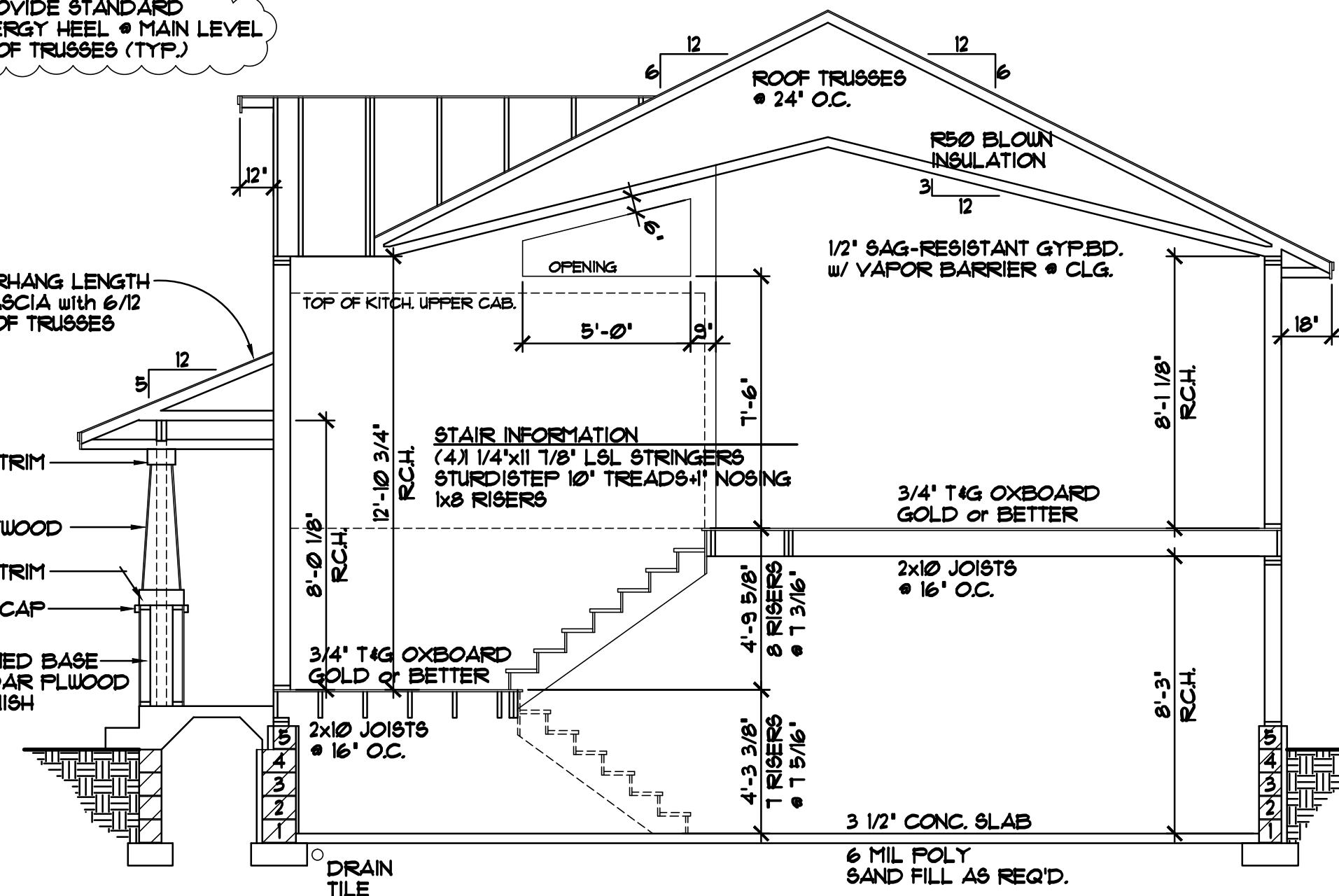
MAIN LEVEL ELECTRICAL PLAN 1/8"=1'-0"



PASSIVE RADON MITIGATION SYSTEM

ALL HEIGHT CALCULATIONS FOR FOUNDATIONS ARE BASED ON THE USE OF FULL 8" HIGH BLOCK WITH 3/8" JOINTS. IF MODULAR BLOCK IS USED, CONTRACTORS SHOULD ADJUST HEIGHTS ACCORDINGLY

NOTE III
PROVIDE STANDARD ENERGY HEEL @ MAIN LEVEL ROOF TRUSSES (TYP)



NOTE III
PROVIDE DOUBLE SILL PLATE @ CRAWL SPACE

CROSS SECTION 1/4"=1'-0"

ROOF CONSTRUCTION:

- PRE-MANUFACTURED ROOF TRUSSES ENGINEERED BY SUPPLIER
- 1/150 ROOF VENTS AT SOFFITS, 1/150 VENT AT RIDGE
- AIR CHUTE AT EACH TRUSS SPACE
- 7/16" OSB ROOF SHEATHING
- 15# ROOFING FELT
- ICE & WATER MEMBRANE APPLIED 24" BEYOND EXTERIOR WALL
- 30 YEAR ARCHITECTURAL SHINGLES

SOFFIT / FASCIA:

- 2x6 SUB FASCIA
- ALUMINUM FASCIA COVER
- ALUMINUM VENTED SOFFIT

WALL CONSTRUCTION:

- TYVEK HOUSE WRAP
- 7/16" OSB SHEATHING
- 2x6 STUDS @ 16" O.C.
- R21 FG. BATT INSULATION
- 4 MIL POLY VAPOR BARRIER
- 1/2" GYPSUM BOARD AT INTERIOR

RIM AREA CONSTRUCTION:

- SEE DETAILS (SHEET #6)

WALL CONSTRUCTION:

- SIMILAR TO ABOVE

SILL CONSTRUCTION:

- 2x6 TREATED SILL PLATE w/SEALER
- 1/2" ANCHOR BOLTS @ 12" O.C.

FOUNDATION CONSTRUCTION:

- CONCRETE BLOCK WALL FOUNDATION (SEE FOUNDATION FOR COURSING)
- INSTALL R10 RIGID FOAM BOARD INSUL. TO EXTERIOR OF FOUNDATION WALLS
- WATERPROOFING

REVISIONS
XXXXXX 0000 BY:XX
XXXXXX 0000 BY:XX

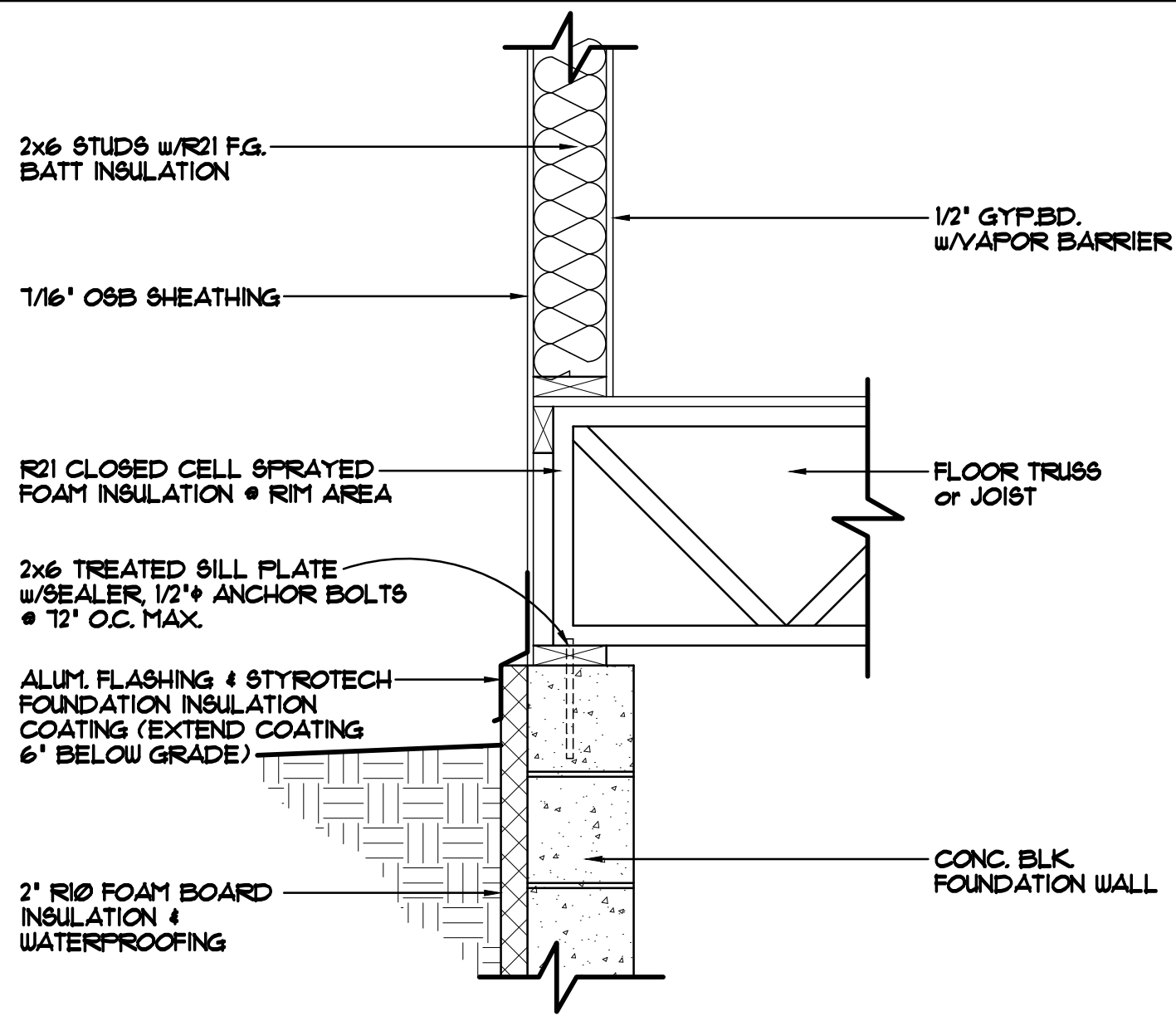
SPECIAL NOTICE:
CROIX DESIGN AND DRAFTING, INC. ACCEPTS NO RESPONSIBILITY FOR ERRORS AND/OR OMISSIONS. THESE DRAWINGS ARE DESIGN CONCEPT ONLY. EVERY EFFORT HAS BEEN MADE TO PREVENT ERRORS AND OMISSIONS. THE USER OF THESE DRAWINGS SHALL BE RESPONSIBLE FOR VERIFYING ALL DIMENSIONS AND CONDITIONS AND BE RESPONSIBLE FOR ANY CHANGES OR ADJUSTMENTS REQUIRED DURING ACTUAL CONSTRUCTION. NO REPRESENTATION IS MADE OR IMPLIED FOR ACCURACY.

OFFICE: 763.757.5997
FAX: 763.757.4883
ANDOVER, MINNESOTA
WWW.CROIXDESIGN.COM



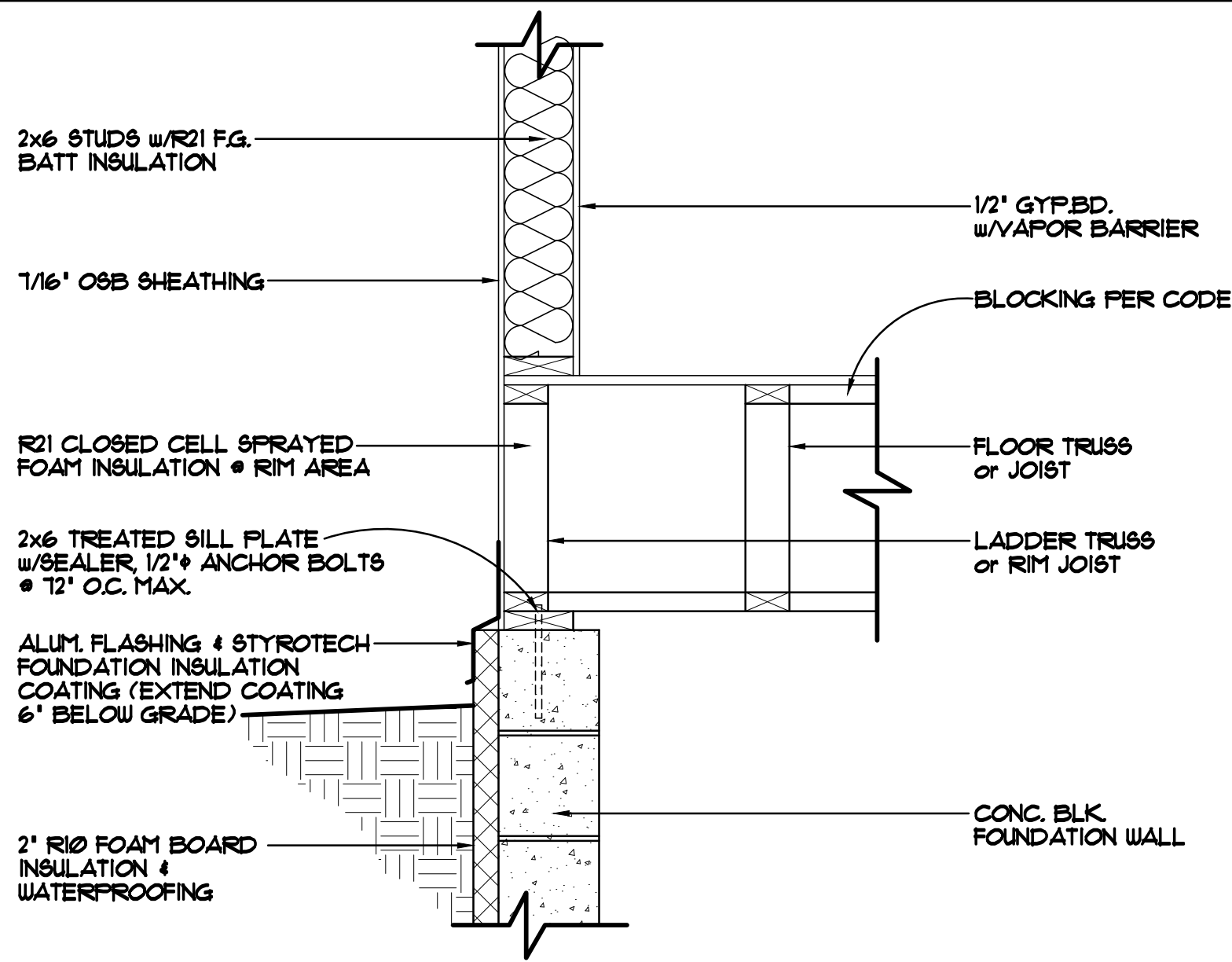
BUILT BY:
SEMLER HOMES

SHEET
5
OF
6
CADD FILE #
11004



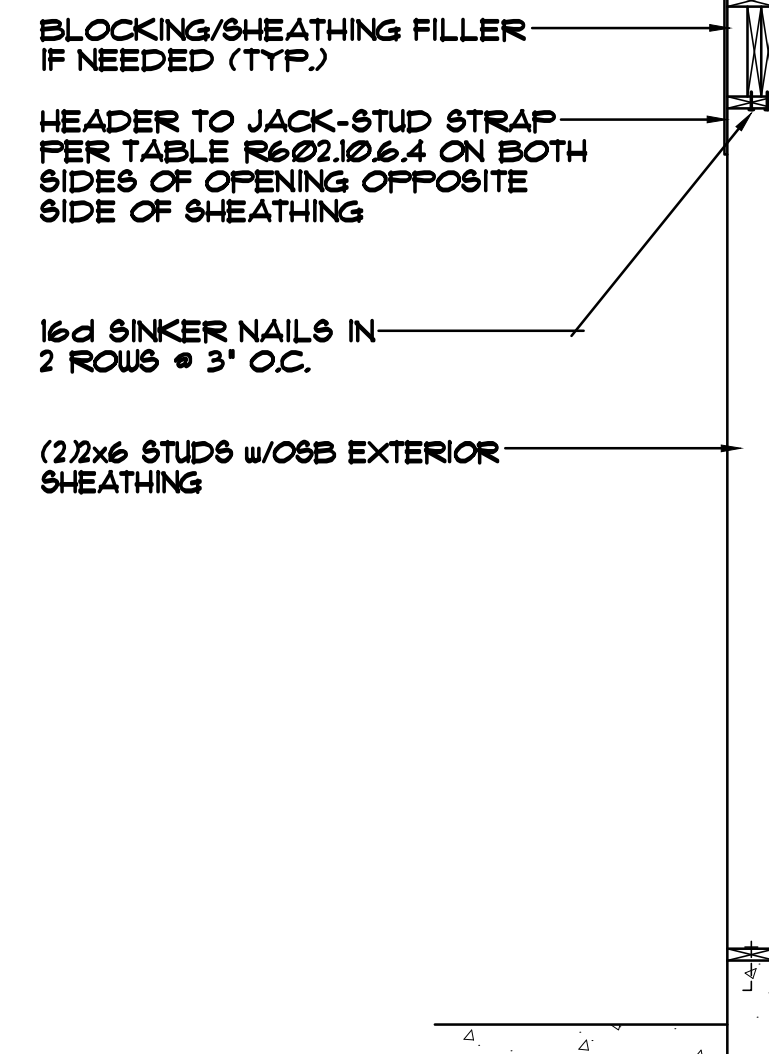
FOUNDATION/RIM AREA DETAIL 1"=1'-0"

STANDARD RIM AREA, TRUSSES/JOISTS PERPENDICULAR TO FOUNDATION WALL

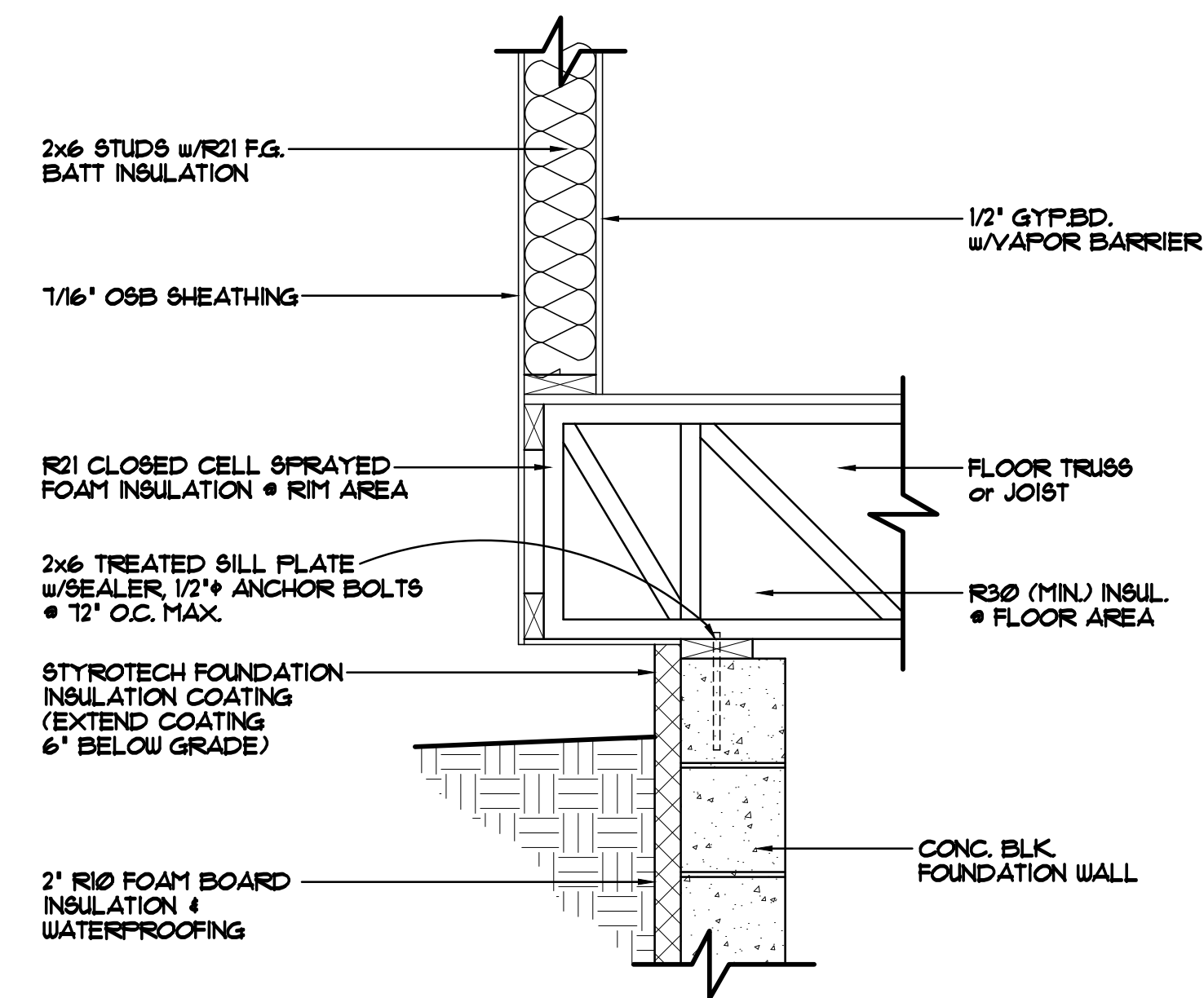


FOUNDATION/RIM AREA DETAIL 1"=1'-0"

STANDARD RIM AREA, TRUSSES/JOISTS PARALLEL TO FOUNDATION WALL

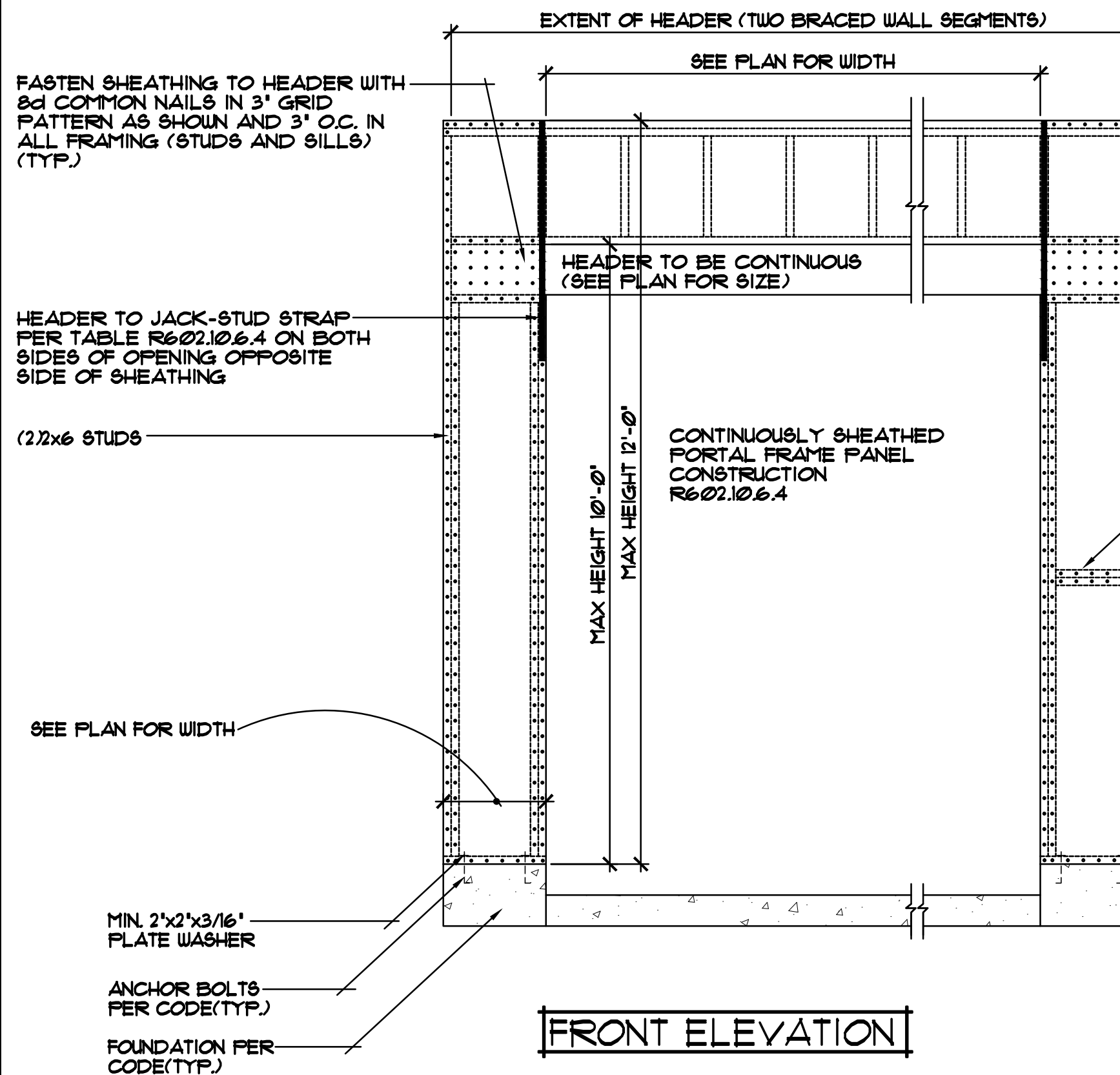


SIDE ELEVATION



FOUNDATION/RIM AREA DETAIL 1"=1'-0"

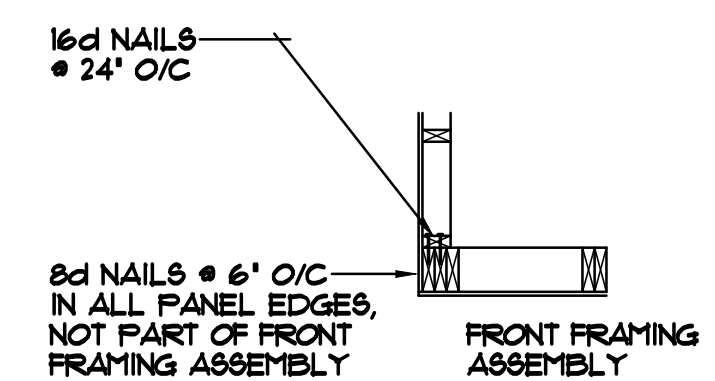
CANTILEVERED TRUSSES/JOISTS



FRONT ELEVATION

CONTINUOUSLY SHEATHED PORTAL FRAME PANEL CONSTRUCTION 1/2"=1'-0"

CORNER FRAMING DETAIL



REVISIONS
XX/XX/XX 0000 BY:XX
XX/XX/XX 0000 BY:XX

SPECIAL NOTICE: CROIX DESIGN AND DRAFTING, INC. ACCEPTS NO RESPONSIBILITY FOR ERRORS AND/OR OMISSIONS. THESE DRAWINGS ARE DESIGN CONCEPT ONLY. EVERY EFFORT HAS BEEN MADE TO PREVENT ERRORS, BUT THE USER MUST VERIFY ALL DIMENSIONS AND CONDITIONS BEFORE CONSTRUCTION. THE USER SHALL BE RESPONSIBLE FOR ANY CHANGES OR ADJUSTMENTS REQUIRED DURING CONSTRUCTION. NO REPRESENTATION IS MADE OR IMPLIED FOR ACCURACY.

OFFICE: 763.757.5997
 FAX: 763.757.4383
 ANDOVER, MINNESOTA
 WWW.CROIXDESIGN.COM



BUILT BY:
SEMLER HOMES

SHEET
 6
 of 6
 CADD FILE #
 11004