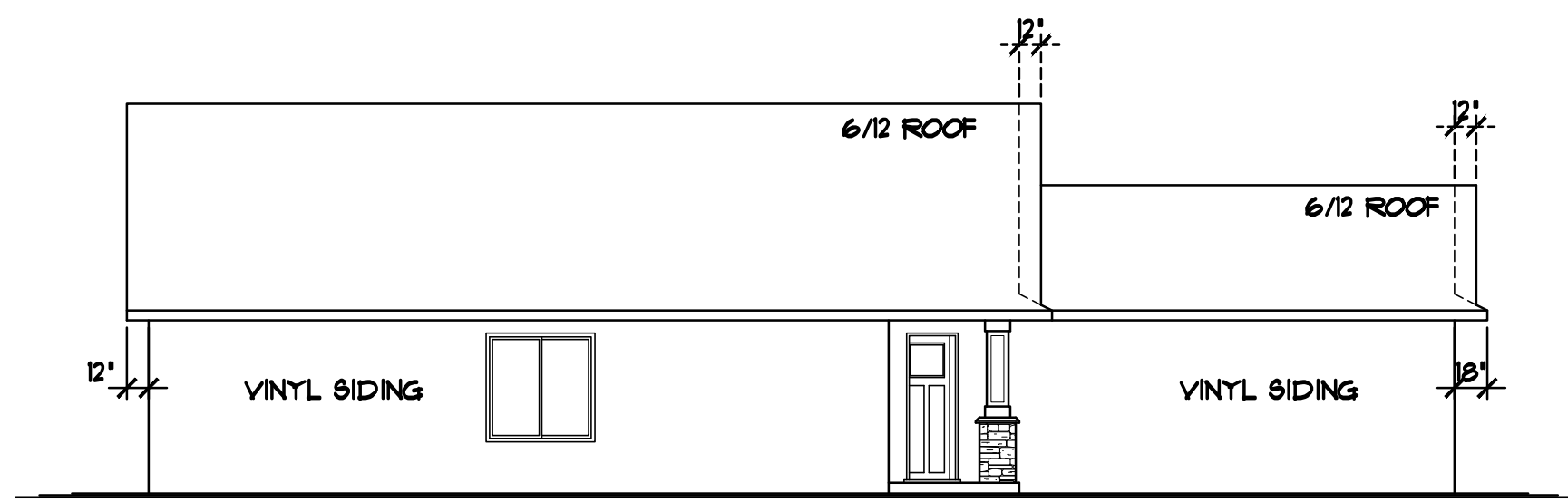
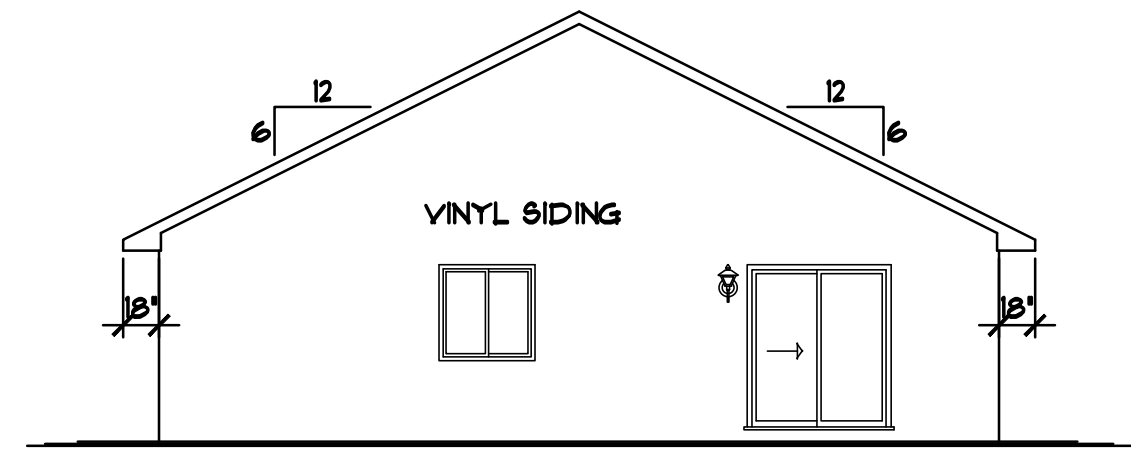


**RIGHT ELEVATION** 1/8"=1'-0"

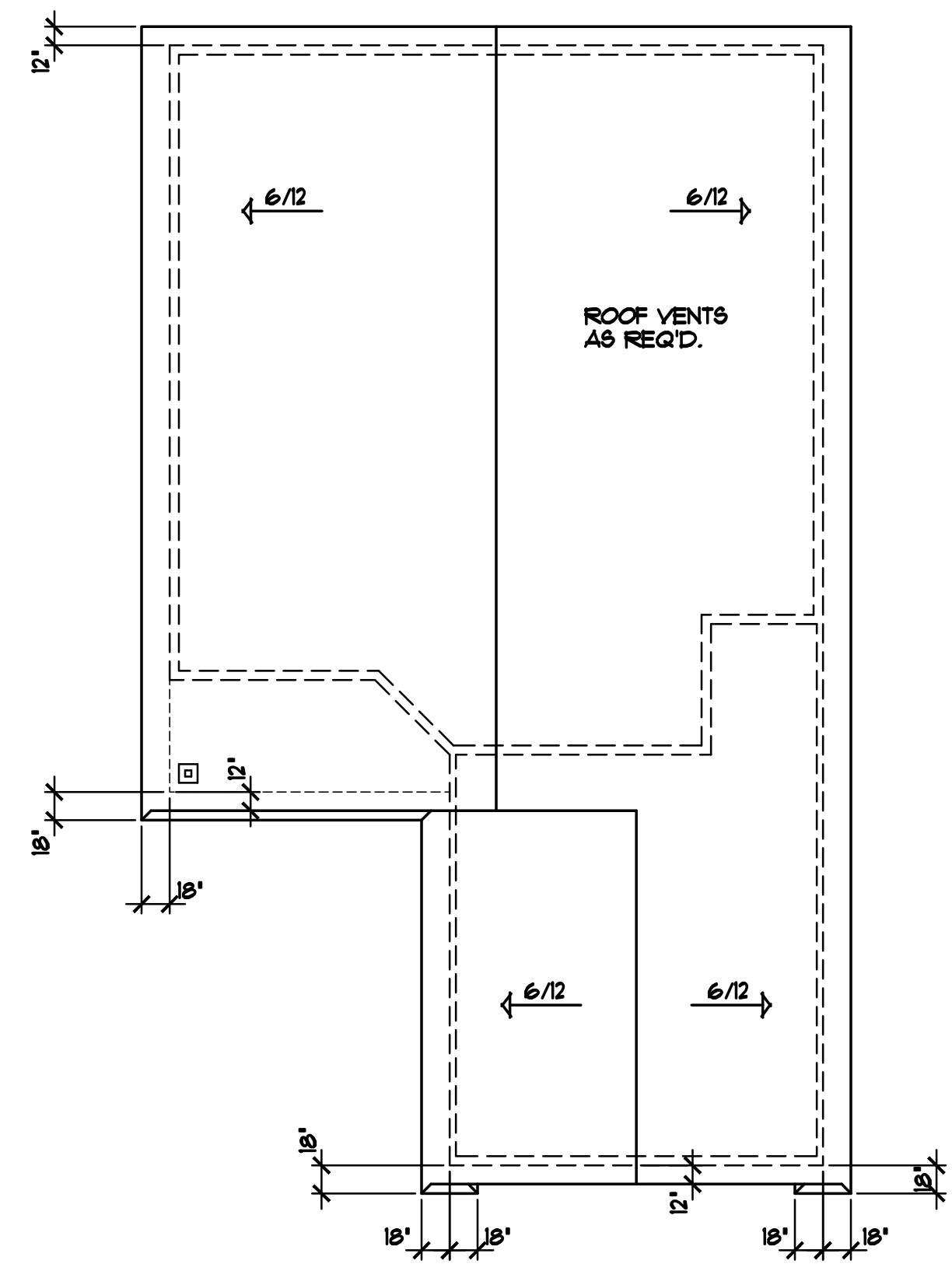


**LEFT ELEVATION** 1/8"=1'-0"

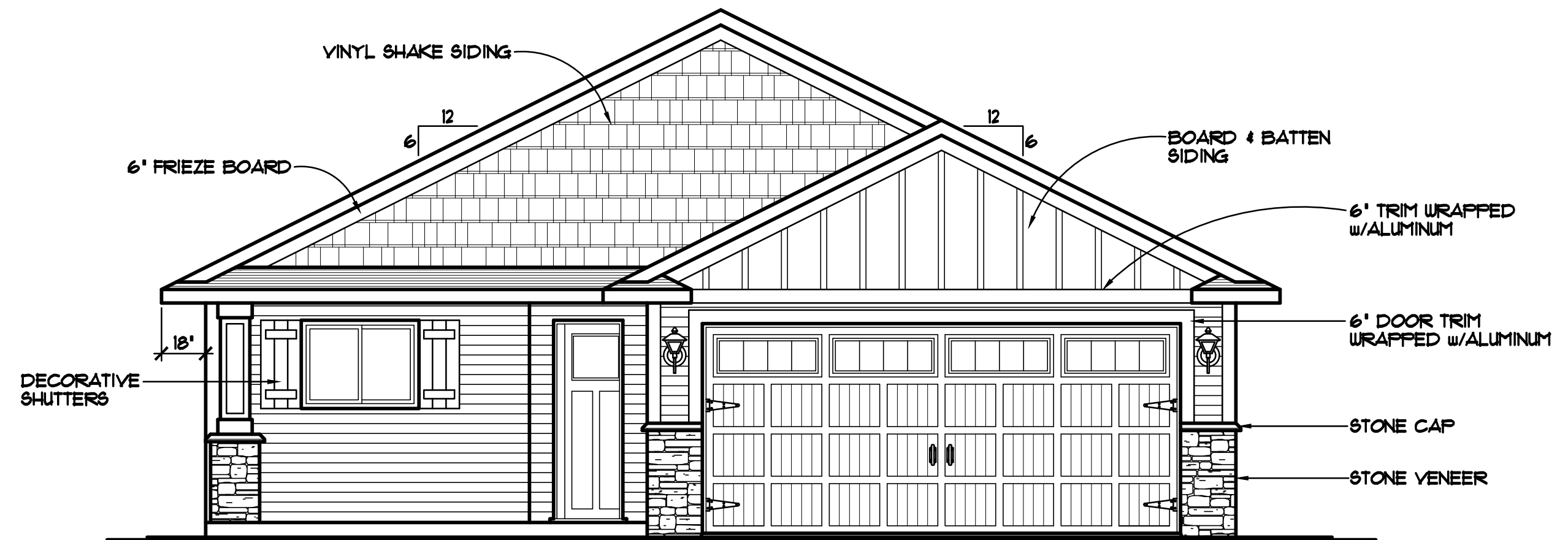


**REAR ELEVATION** 1/8"=1'-0"

- VECTOR WINDOWS SPEC'D. VERIFY ALL DOOR AND WINDOW ROUGH OPENINGS WITH SUPPLIER
- ALUMINUM SOFFITS & FASCIA
- VINYL SIDING/CORNER TRIM
- STONE VENEER AS SHOWN



**BIRD'S-EYE ROOF PLAN** 1/8"=1'-0"



**FRONT ELEVATION** 1/4"=1'-0"

1188 SQ. FT. MAIN LEVEL  
48 SQ. FT. MECH. RM. NOT INCLUDED

16'0"x1'0" 430 CARRIAGE HOUSE COLLECTION, STEEL GARAGE DOOR with 581 STOCKBRIDGE WINDOWS

THE:  
**ISANTI MODEL HOME**  
1000 WINSOME WAY NW  
LOT 91, BLOCK 3, VILLAGES ON THE RUM  
ISANTI, MN

© COPYRIGHT 2014-2017 NOTICE, ALL RIGHTS RESERVED CROIX DESIGN and DRAFTING, INC.

REVISIONS	BY
143071	N.F.
16162	N.F.

**SPECIAL NOTICE:**  
CROIX DESIGN AND DRAFTING, INC. ACCEPTS NO RESPONSIBILITY FOR ERRORS AND/OR OMISSIONS. THESE DRAWINGS ARE DESIGN CONCEPT ONLY. EVERY EFFORT HAS BEEN MADE TO DESIGN ACCURATELY. THE OWNER, GENERAL CONTRACTOR, SUB-CONTRACTORS, AND SUPPLIERS MUST CHECK ALL DETAILS AND DIMENSIONS AND BE RESPONSIBLE FOR ANY CHANGES OR ADJUSTMENTS REQUIRED DURING ACTUAL CONSTRUCTION. NO REPRESENTATION IS MADE OR IMPLIED FOR ACCURACY.

**© COPYRIGHT NOTICE, ALL RIGHTS RESERVED**  
THESE ARCHITECTURAL PLANS AND ALL RELATED WORKS ARE PROTECTED BY UNITED STATES COPYRIGHT LAWS, AND MAY NOT BE REPRODUCED OR TRANSMITTED IN ANY FORM OR BY ANY MEANS, WITHOUT THE EXPRESS WRITTEN PERMISSION OF CROIX DESIGN AND DRAFTING, INC.

DESIGN and DRAFTING BY:

ARCHITECTURAL DESIGN and DRAFTING SERVICE • HOME PLAN SERVICE • CUSTOM HOMES • REMODELING • PHONE: 763.757.5997 • ANDOVER, MINNESOTA • WWW.CROIXDESIGN.COM

BUILT BY:

163-154-5518 LIC. # 3649

DRAWN	N.F.
CHECKED	XX
DATE:	1/21/2017
SCALE:	AS NOTED
CADD FILE #	17023
SHEET	1 OF 4

REVISIONS
XXXXXX 0000 BY:XX
XXXXXX 0000 BY:XX

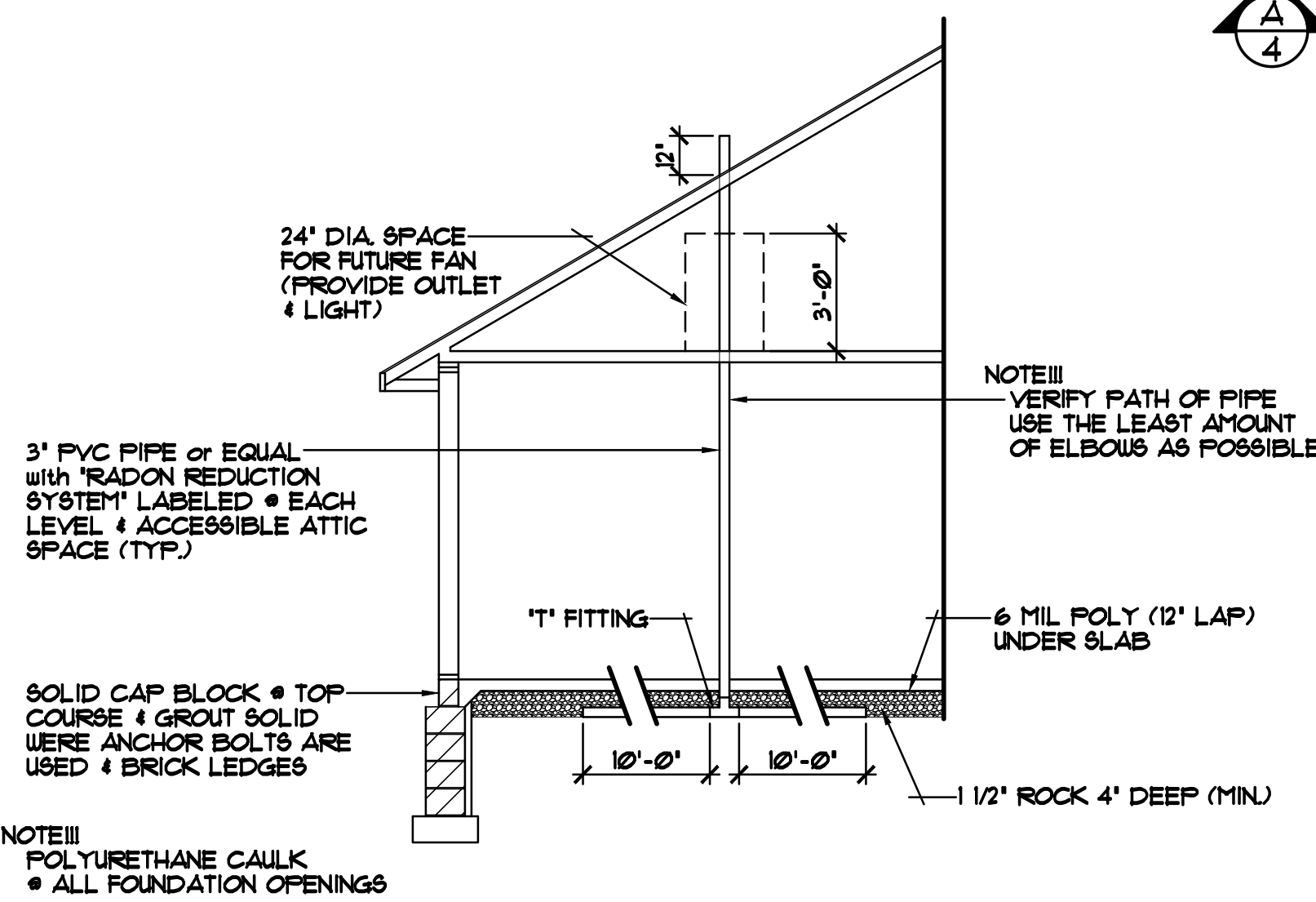
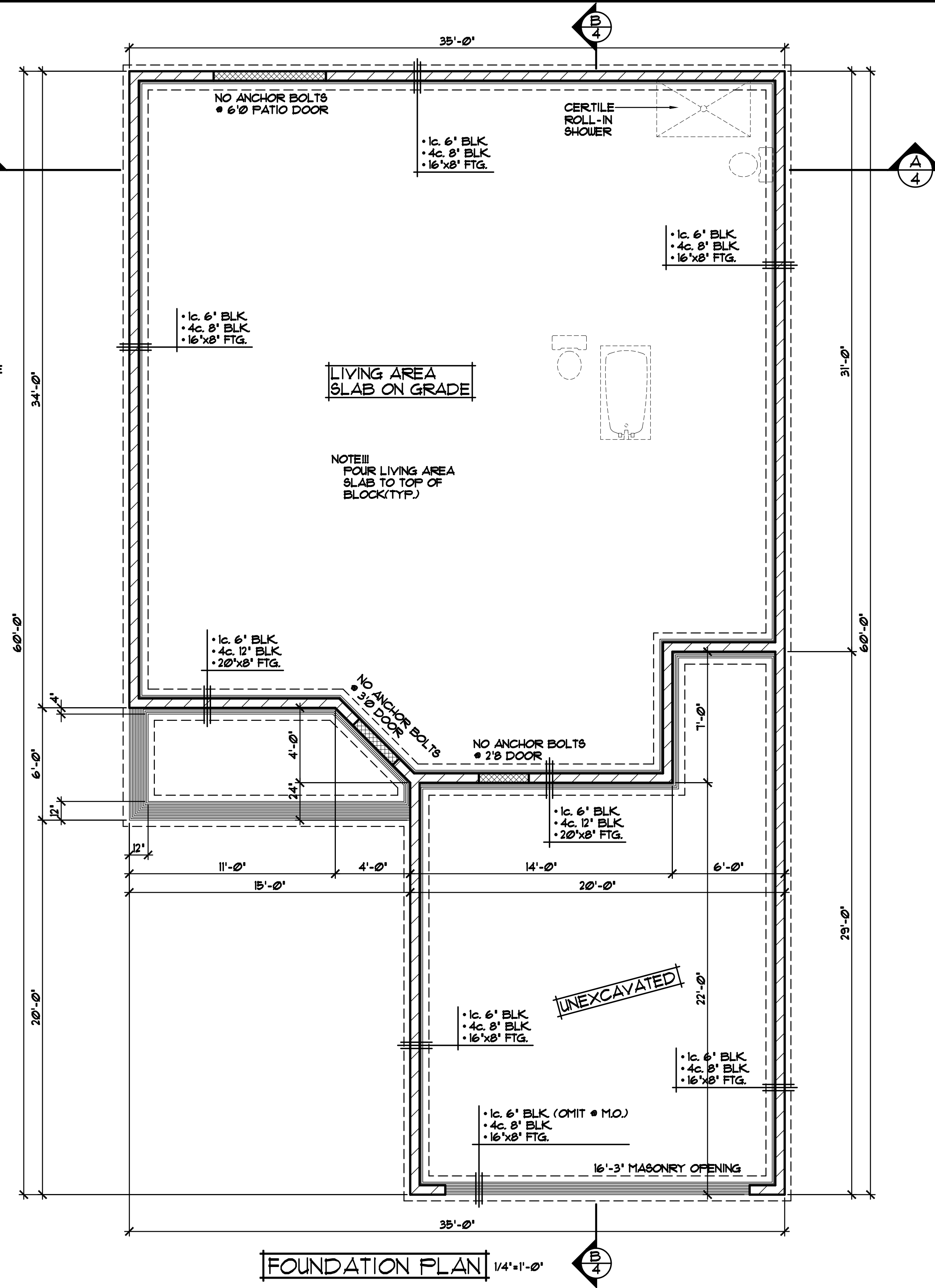
**SPECIAL NOTICE:**  
CROIX DESIGN AND DRAFTING, INC. ACCEPTS NO RESPONSIBILITY FOR ERRORS AND/OR OMISSIONS. THESE DRAWINGS ARE DESIGN CONCEPT ONLY. EVERY EFFORT HAS BEEN MADE TO PREPARE THESE DRAWINGS ACCURATELY. HOWEVER, THE CONTRACTOR SHALL VERIFY ALL DIMENSIONS AND CONDITIONS ON THE JOB. THE CONTRACTOR SHALL BE RESPONSIBLE FOR ANY CHANGES OR ADJUSTMENTS REQUIRED DURING CONSTRUCTION. NO REPRESENTATION IS MADE OR IMPLIED FOR ACCURACY.

OFFICE: 763.757.5997  
FAX: 763.757.4383  
ANDOVER, MINNESOTA  
WWW.CROIXDESIGN.COM



BUILT BY:  
**SEMLER HOMES**

SHEET  
**2**  
of 4  
CADD FILE #  
11023

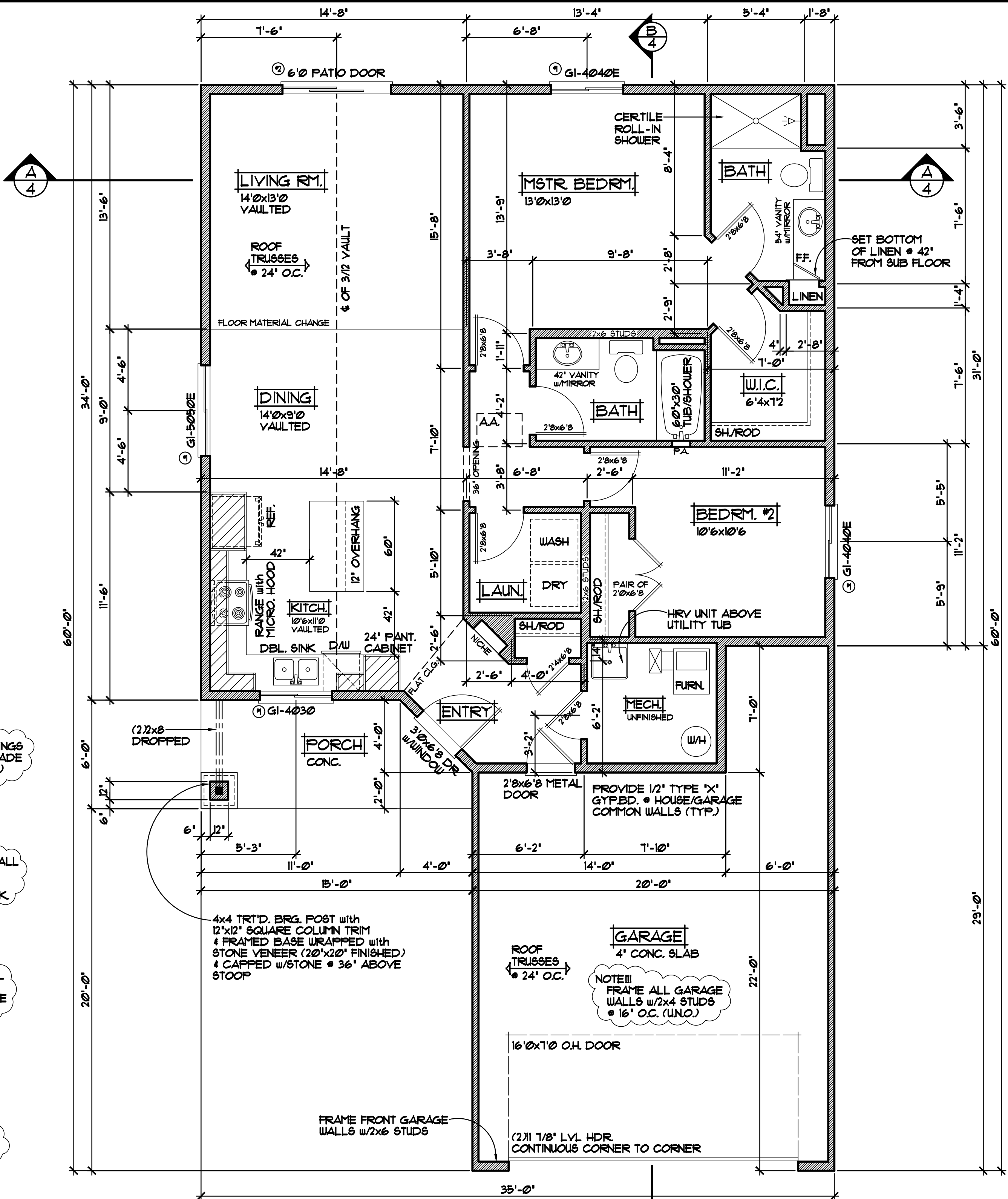


**ALTERNATE METHOD FOR PASSIVE RADON MITIGATION SYSTEM**

ALL HEIGHT CALCULATIONS FOR FOUNDATIONS ARE BASED ON THE USE OF FULL 8" HIGH BLOCK w/ 3/8" JOINTS. IF MODULAR BLOCK IS USED, CONTRACTORS SHOULD ADJUST HEIGHTS ACCORDINGLY.

**FOUNDATION PLAN** 1/4"=1'-0"

WINDOW and DOOR PERFORMANCE DATA U-VALUE / SHGC	
① GLIDER UNIT U-VALUE = 0.30 SHGC = 0.34	
② SLIDING PATIO DOOR U-VALUE = 0.28 SHGC = 0.34	



NOTE III  
 ALL WDW/DOOR OPENINGS  
 TO HAVE (2) 2x10 @ 2 GRADE  
 HDR. or BETTER (UNO.)

NOTE III  
 TOP OF RO. FOR ALL  
 WINDOWS TO BE  
 6'-10 1/2" FROM  
 TOP OF CONC. BLK.

NOTE III  
 VERIFY ALL MECHANICAL  
 EQUIPMENT LOCATIONS,  
 LOCATIONS ON PLAN ARE  
 REPRESENTATION ONLY

NOTE III  
 8'-1 1/8" PLATE  
 HEIGHT @ ENTIRE  
 MAIN LEVEL (UNO.)

**MAIN LEVEL FLOOR PLAN** 1/4" = 1'-0"  
 1188 SQ. FT. MAIN LEVEL (48 SQ. FT. MECH. RM. NOT INCLUDED)

VECTOR WINDOWS SPEC'D.  
 VERIFY ALL DOOR AND WINDOW  
 ROUGH OPENINGS WITH SUPPLIER

REVISIONS
XXXXXX 0000 BY:XX
XXXXXX 0000 BY:XX

**SPECIAL NOTICE:**  
 CROIX DESIGN AND DRAFTING, INC. ACCEPTS NO RESPONSIBILITY FOR ERRORS AND/OR OMISSIONS. THESE DRAWINGS ARE DESIGN CONCEPT ONLY. EVERY EFFORT HAS BEEN MADE TO PREPARE THESE DRAWINGS ACCURATELY. HOWEVER, THE USER SHALL BE RESPONSIBLE FOR VERIFYING ALL DIMENSIONS AND CONDITIONS BEFORE CONSTRUCTION. THE USER SHALL BE RESPONSIBLE FOR ANY CHANGES OR ADJUSTMENTS REQUIRED DURING CONSTRUCTION. NO REPRESENTATION IS MADE OR IMPLIED FOR ACCURACY.

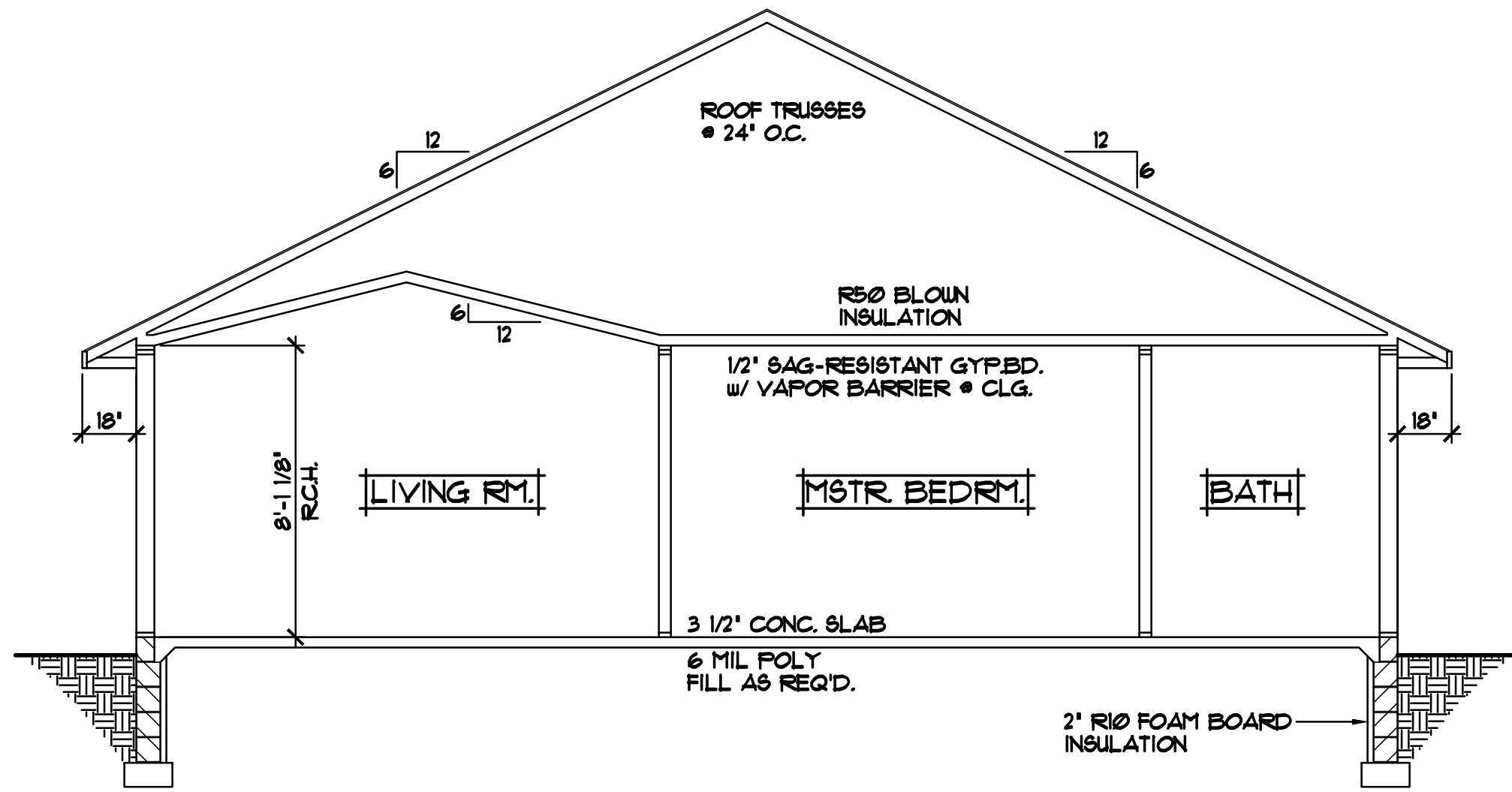
OFFICE: 763.757.5997  
 FAX: 763.757.4383  
 ANDOVER, MINNESOTA  
 WWW.CROIXDESIGN.COM



BUILT BY:  
**SEMLER HOMES**

SHEET
3
of 4
CADD FILE #
17023

REVISIONS
XXXXXX 0000 BY:XX
XXXXXX 0000 BY:XX



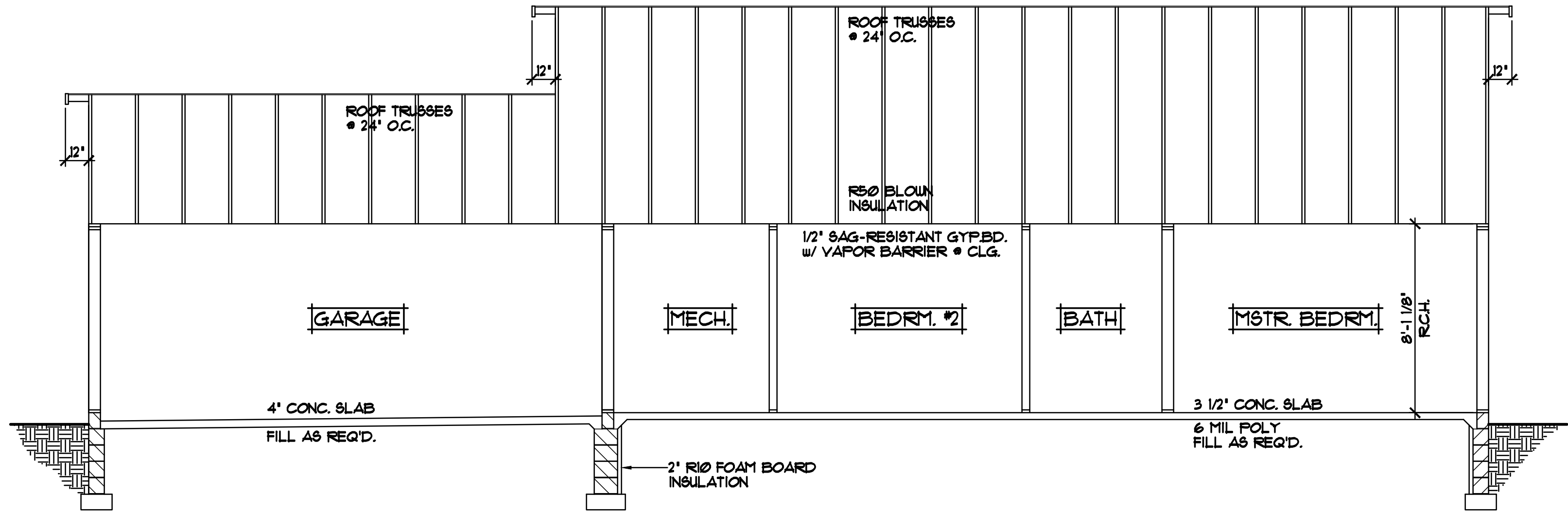
CROSS SECTION "A" 1/4"=1'-0"

- ROOF CONSTRUCTION:**
- PRE-MANUFACTURED ROOF TRUSSES-ENGINEERED BY SUPPLIER
  - 1/16" ROOF VENT AT SOFFITS, 1/16" VENT AT RIDGE
  - AIR CHUTE AT EACH TRUSS SPACE
  - 1/16" ROOF SHEATHING
  - 15# ROOFING FELT
  - ICE & WATER MEMBRANE APPLIED 24" PAST EXTERIOR WALL
  - 30 YEAR RAISED TAB SHINGLES

- SOFFIT / FASCIA:**
- 2x6 SUB-FASCIA
  - MAINTENANCE FREE FASCIA COVER
  - MAINTENANCE FREE VENTED SOFFIT

- WALL CONSTRUCTION:**
- TYVEK HOUSE WRAP
  - 1/16" OSB SHEATHING
  - 2x6 STUDS @ 16" O.C.
  - WINDOWS PER SPEC'S
  - R-21 F.G. BATT INSULATION
  - 4 MIL POLY VAPOR BARRIER
  - 1/2" GYPSUM BOARD

- SILL CONSTRUCTION:**
- 2x6 SILL PLATE & SEALER
  - 1/2" ANCHOR BOLTS @ 12" O.C.



CROSS SECTION "B" 1/4"=1'-0"

ALL HEIGHT CALCULATIONS FOR FOUNDATIONS ARE BASED ON THE USE OF FULL 8" HIGH BLOCK w/ 3/8" JOINTS. IF MODULAR BLOCK IS USED, CONTRACTORS SHOULD ADJUST HEIGHTS ACCORDINGLY.

**SPECIAL NOTICE:**  
CROIX DESIGN AND DRAFTING, INC. ACCEPTS NO RESPONSIBILITY FOR ERRORS AND/OR OMISSIONS. THESE DRAWINGS ARE DESIGN CONCEPT ONLY. EVERY EFFORT HAS BEEN MADE TO PREVENT ERRORS, BUT THE USER MUST VERIFY ALL DIMENSIONS, CONDITIONS, AND MATERIALS BEFORE CONSTRUCTION. THE USER IS RESPONSIBLE FOR ANY CHANGES OR ADJUSTMENTS REQUIRED DURING CONSTRUCTION. NO REPRESENTATION IS MADE OR IMPLIED FOR ACCURACY.

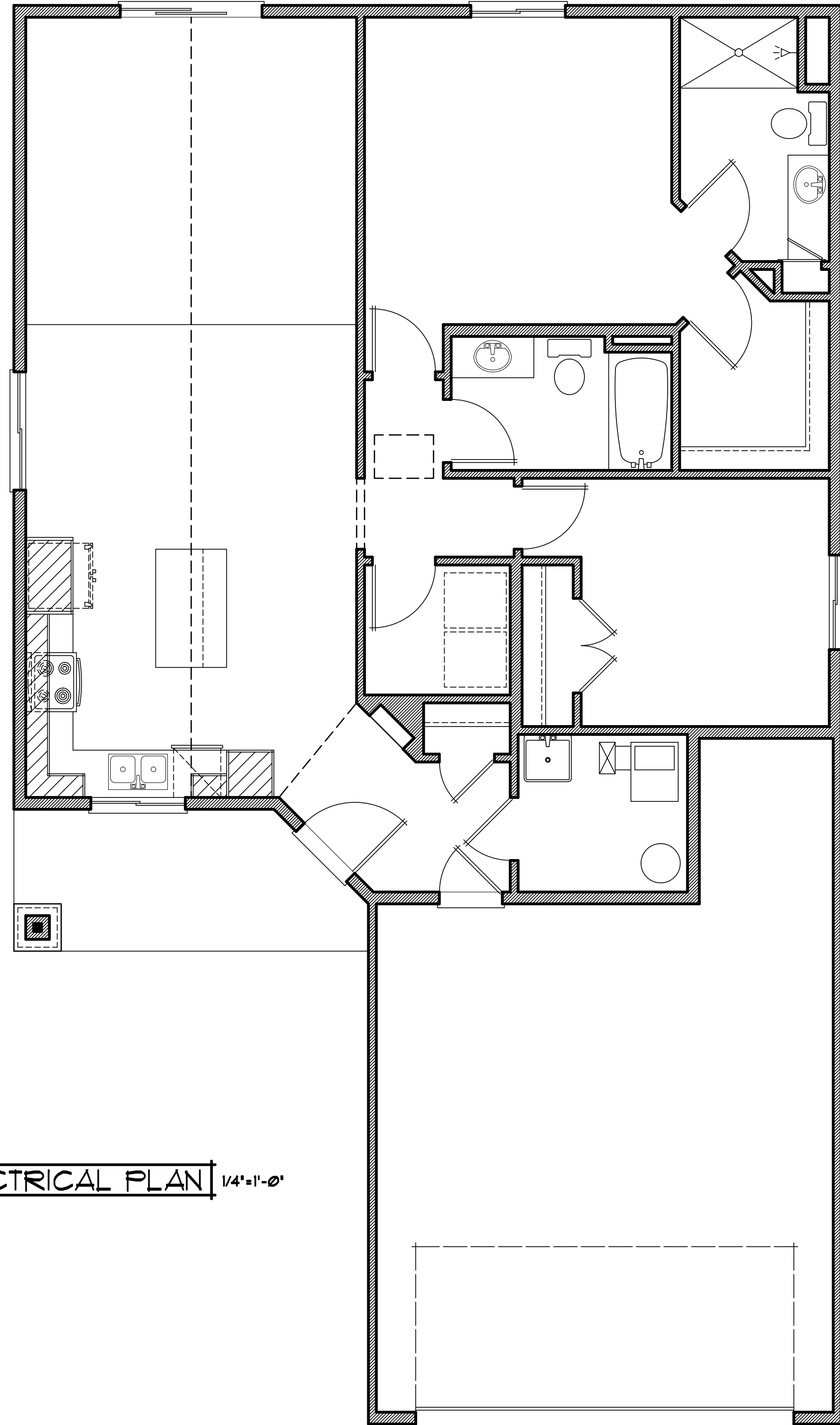
OFFICE: 763.757.5997  
FAX: 763.757.4383  
ANDOVER, MINNESOTA  
WWW.CROIXDESIGN.COM



BUILT BY:  
**SEMLER HOMES**

SHEET  
**4**  
of 4  
CADD FILE #  
11023

LIGHT FIXTURE SYMBOLS	
	LIGHT - CEILING FIXTURE
	LIGHT - RECESSED FIXTURE
	LIGHT - RECESSED DIRECTIONAL
	LIGHT - PENDANT
	LIGHT - TRACK
	LIGHT - FLOURESCENT
	LIGHT - WALL MOUNTED



ELECTRICAL PLAN 1/4"=1'-0"

REVISIONS

XXXXXX  
0000  
BY:XX

XXXXXX  
0000  
BY:XX

**SPECIAL NOTICE:**  
CROIX DESIGN AND DRAFTING, INC. ACCEPTS NO RESPONSIBILITY FOR ERRORS AND/OR OMISSIONS. THESE DRAWINGS ARE DESIGN CONCEPT ONLY. EVERY EFFORT HAS BEEN MADE TO PREVENT ERRORS AND OMISSIONS. THE USER SHALL BE RESPONSIBLE FOR VERIFYING ALL DIMENSIONS, MATERIALS, AND SPECIFICATIONS. THE USER SHALL BE RESPONSIBLE FOR OBTAINING ALL NECESSARY PERMITS AND APPROVALS. THE USER SHALL BE RESPONSIBLE FOR ANY CHANGES OR ADJUSTMENTS REQUIRED DURING CONSTRUCTION. NO REPRESENTATION IS MADE OR IMPLIED FOR ACCURACY.

OFFICE: 763.757.5997  
FAX: 763.757.4383  
ANDOVER, MINNESOTA  
WWW.CROIXDESIGN.COM



BUILT BY:  
SEMLER HOMES

SHEET

of X

CADD FILE #  
11023