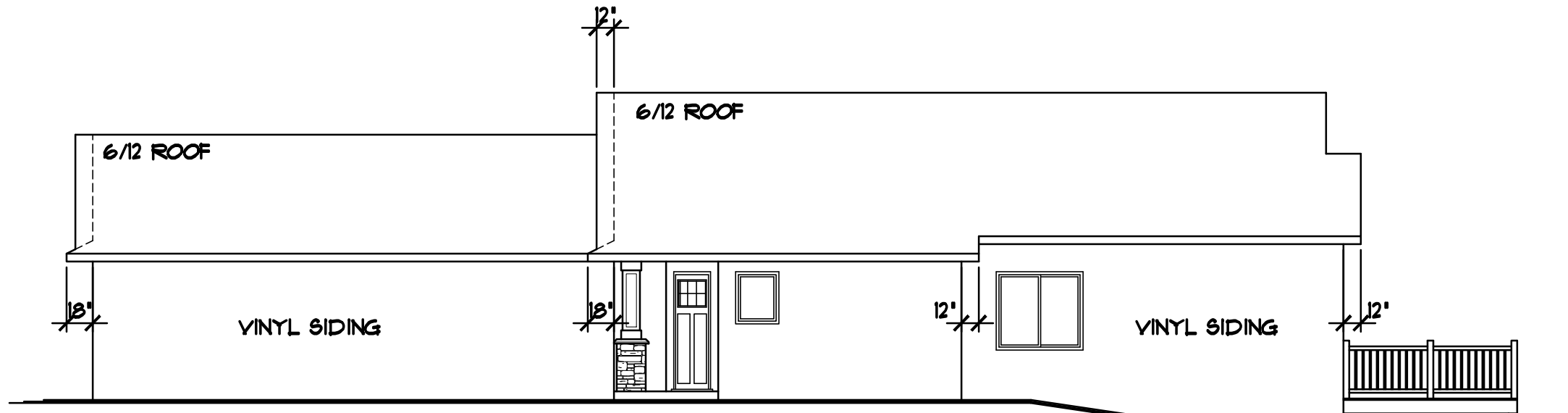
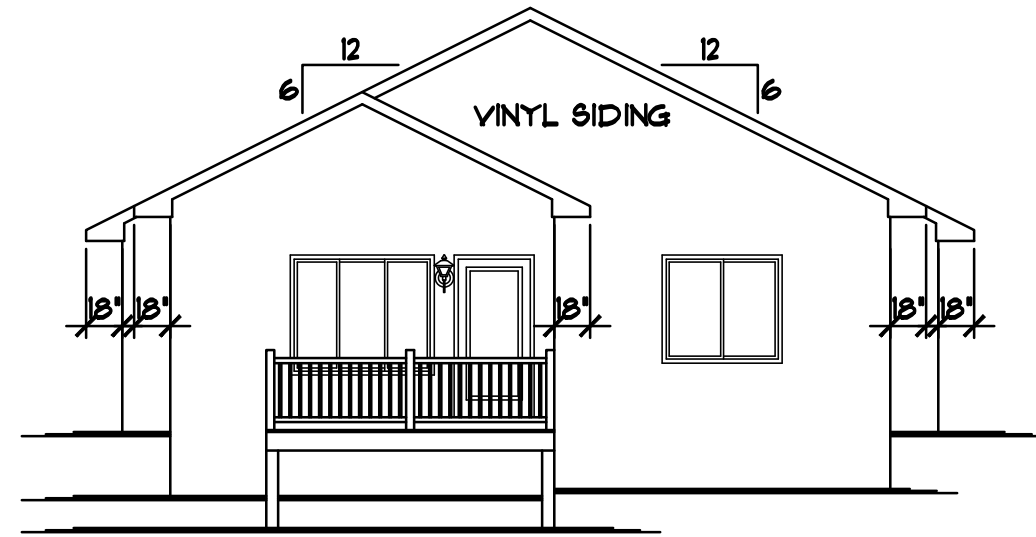


REVISIONS	BY
15226	N.F.
16264	N.F.

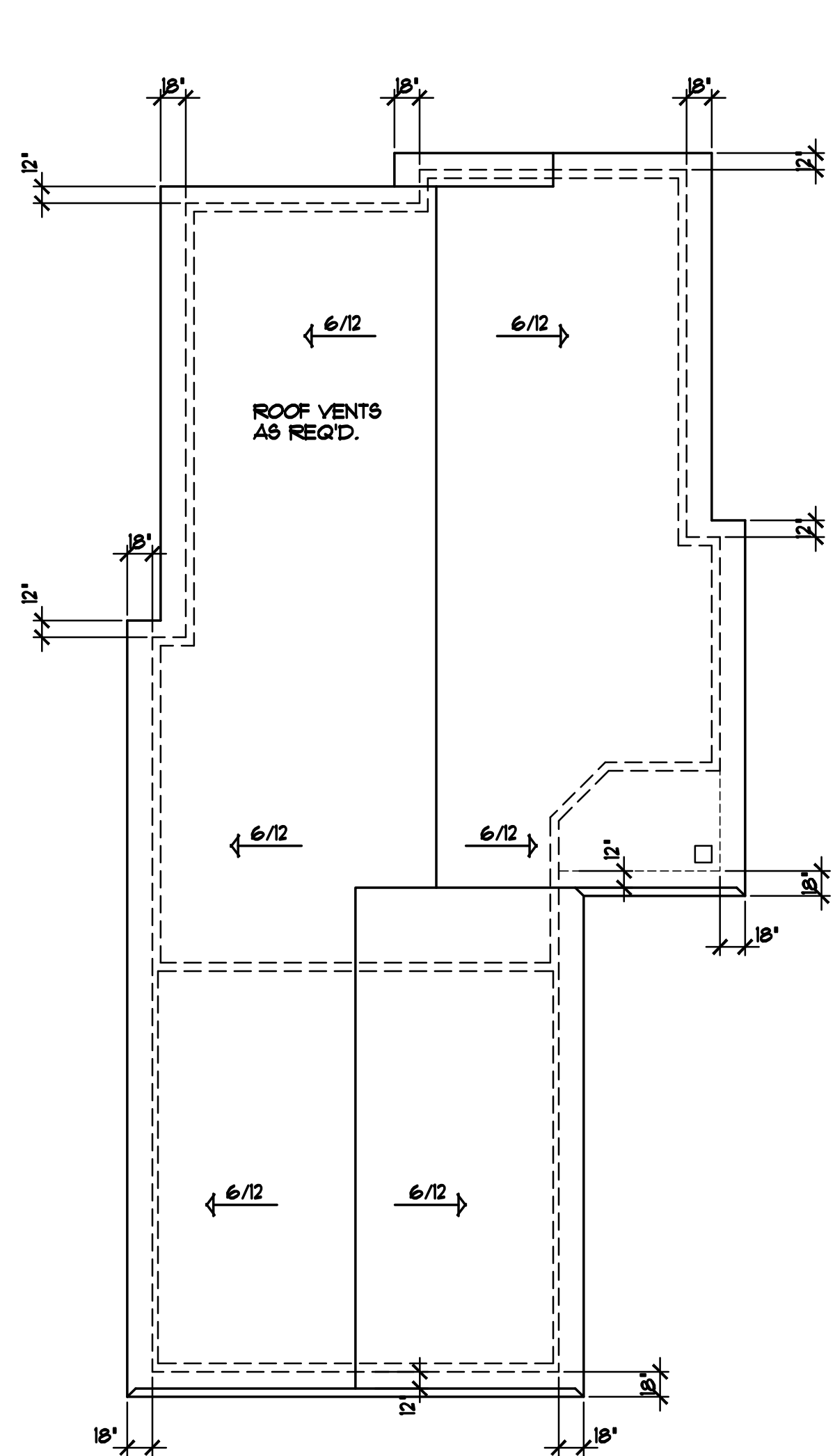


RIGHT ELEVATION 1/8"=1'-0"

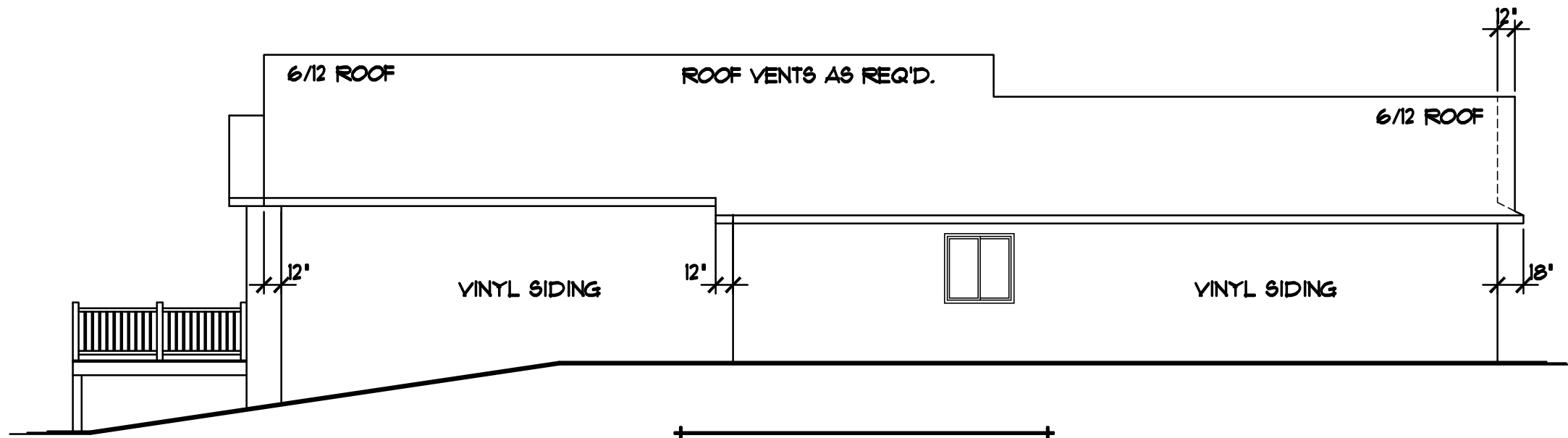


REAR ELEVATION 1/8"=1'-0"

NOTE III
 STEP BLK. & FTG. PER GRADE (FIELD VERIFY)
 MAINTAIN MINIMUM DISTANCE OF 42" FROM GRADE TO BOTTOM OF CONC. FTG.

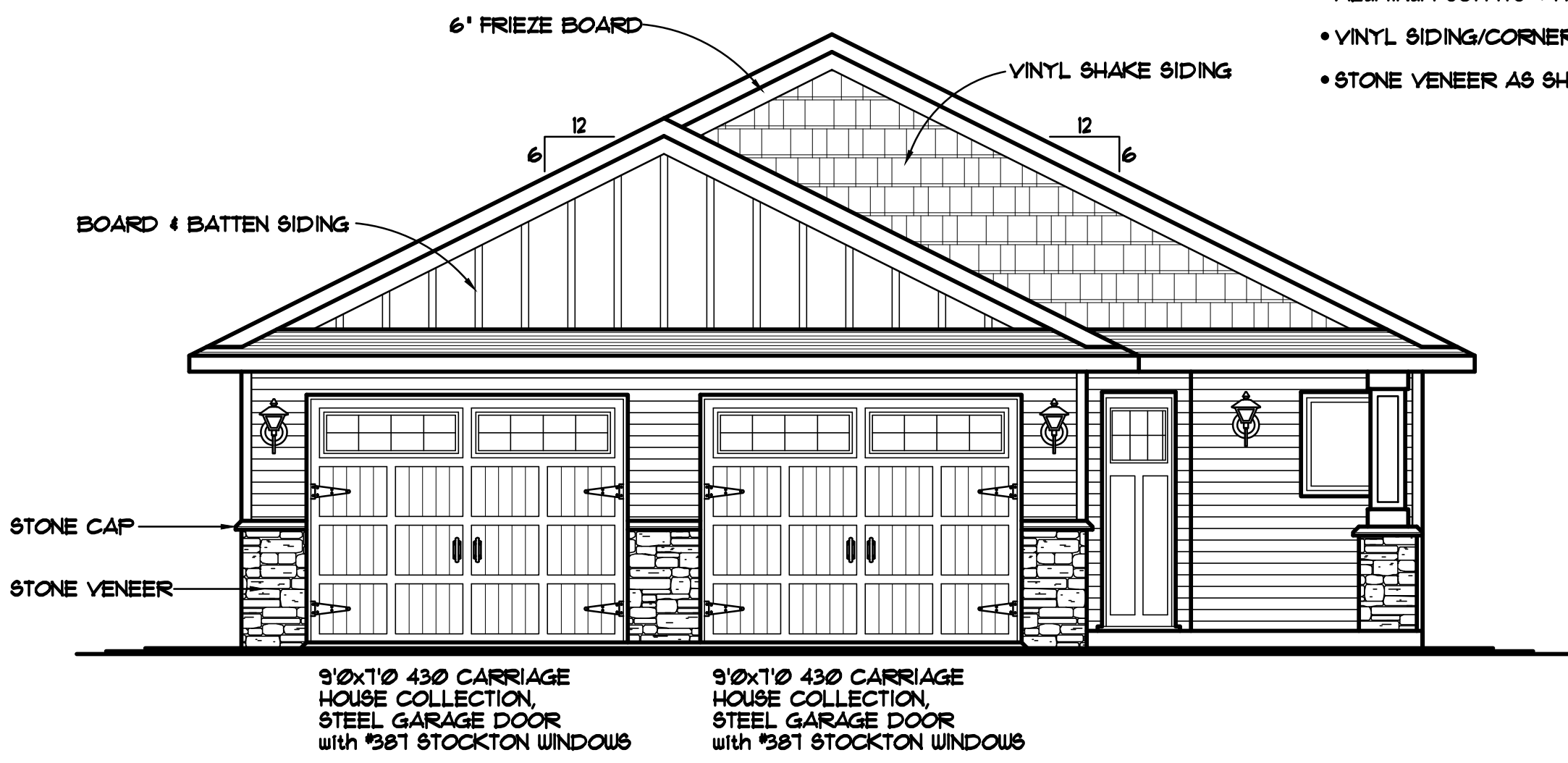


BIRD'S-EYE ROOF PLAN 1/8"=1'-0"



LEFT ELEVATION 1/8"=1'-0"

- VECTOR WINDOWS SPEC'D, VERIFY ALL DOOR AND WINDOW ROUGH OPENINGS WITH SUPPLIER
- ALUMINUM SOFFITS & FASCIA
- VINYL SIDING/CORNER TRIM
- STONE VENEER AS SHOWN



FRONT ELEVATION 1/4"=1'-0"

1347 SQ. FT. MAIN LEVEL
 46 SQ. FT. MECH. RM. NOT INCLUDED

THE:
ISANTI MODEL HOME
 940 WINSOME WAY
 LOT 92, BLOCK 3, VILLAGES ON THE RUM
 ISANTI, MN

SPECIAL NOTICE:
 CROIX DESIGN AND DRAFTING, INC. ACCEPTS NO RESPONSIBILITY FOR ERRORS AND/OR OMISSIONS. THESE DRAWINGS ARE DESIGN CONCEPT ONLY. EVERY EFFORT HAS BEEN MADE TO DESIGN ACCURATELY. THE USER SHALL BE RESPONSIBLE FOR VERIFYING ALL SUB-CONTRACTORS AND SUPPLIERS MUST CHECK ALL DETAILS AND DIMENSIONS AND BE RESPONSIBLE FOR ANY CHANGES OR ADJUSTMENTS REQUIRED DURING ACTUAL CONSTRUCTION. NO REPRESENTATION IS MADE OR IMPLIED FOR ACCURACY.
 © COPYRIGHT NOTICE, ALL RIGHTS RESERVED
 THESE ARCHITECTURAL PLANS AND ALL RELATED WORKS ARE PROTECTED BY UNITED STATES COPYRIGHT LAWS, AND THAT NOT BE REPRODUCED OR TRANSMITTED IN ANY FORM OR BY ANY MEANS, WITHOUT THE EXPRESS WRITTEN PERMISSION OF CROIX DESIGN AND DRAFTING, INC.

DESIGN and DRAFTING BY:

ARCHITECTURAL DESIGN and DRAFTING SERVICE • HOME PLAN SERVICE • CUSTOM HOMES • REMODELING • PHONE: 763.757.5997 • ANDOVER, MINNESOTA • WWW.CROIXDESIGN.COM

BUILT BY:

1895 STATION PARKWAY NW ANDOVER, MN 55004
 LIC. # 3649
 763-754-5518

DRAIN	N.F.
CHECKED	XX
DATE:	2/14/2017
SCALE:	AS NOTED
CADD FILE #	T1024

REVISIONS
XXXXXX 0000 BY:XX
XXXXXX 0000 BY:XX

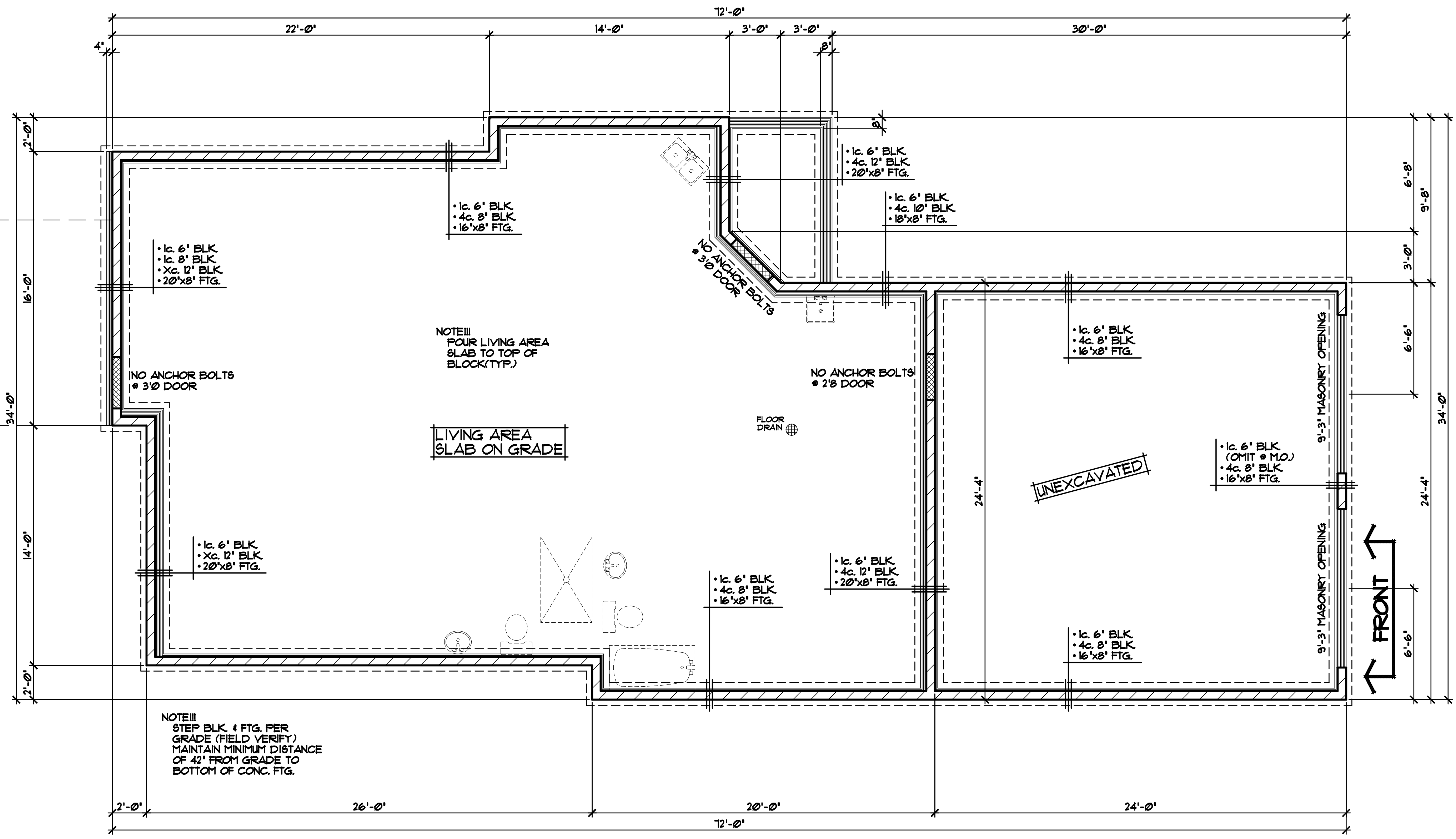
SPECIAL NOTICE:
CROIX DESIGN AND DRAFTING, INC. ACCEPTS NO RESPONSIBILITY FOR ERRORS AND/OR OMISSIONS. THESE DRAWINGS ARE DESIGN CONCEPT ONLY. EVERY EFFORT HAS BEEN MADE TO PREPARE THESE DRAWINGS ACCURATELY AND TO REFLECT THE CLIENT'S REQUIREMENTS. THE CLIENT SHALL BE RESPONSIBLE FOR VERIFYING ALL DIMENSIONS AND CONDITIONS OF THE SITE AND FOR OBTAINING ALL NECESSARY PERMITS AND APPROVALS. THE CLIENT SHALL BE RESPONSIBLE FOR ANY CHANGES OR ADJUSTMENTS REQUIRED DURING CONSTRUCTION. NO REPRESENTATION IS MADE OR IMPLIED FOR ACCURACY.

OFFICE: 763.757.5997
FAX: 763.757.4383
ANDOVER, MINNESOTA
WWW.CROIXDESIGN.COM



BUILT BY:
SEMLER HOMES

SHEET
2
OF
5
CADD FILE #
17024



ALL HEIGHT CALCULATIONS FOR FOUNDATIONS ARE BASED ON THE USE OF FULL 8" HIGH BLOCK w/ 3/8" JOINTS. IF MODULAR BLOCK IS USED, CONTRACTORS SHOULD ADJUST HEIGHTS ACCORDINGLY.

REVISIONS
XX/XX/XX
0000
BY:XX
XX/XX/XX
0000
BY:XX

WINDOW and DOOR PERFORMANCE DATA U-VALUE / SHGC
① GLIDER UNIT U-VALUE = 0.30 SHGC = 0.34
② CASEMENT UNIT U-VALUE = 0.29 SHGC = 0.30

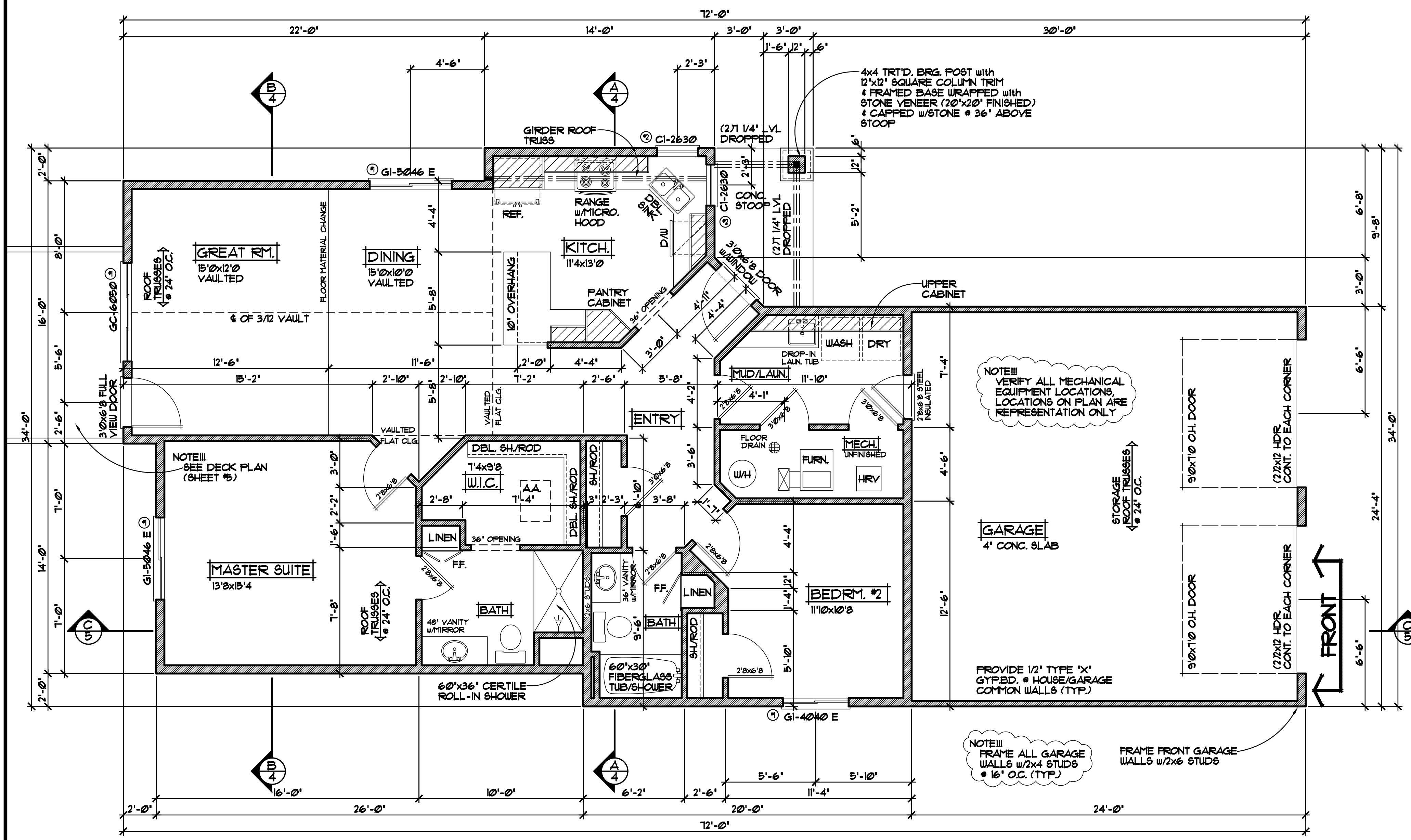
SPECIAL NOTICE:
CROIX DESIGN AND DRAFTING, INC. ACCEPTS NO RESPONSIBILITY FOR ERRORS AND/OR OMISSIONS. THESE DRAWINGS ARE DESIGN CONCEPT ONLY. EVERY EFFORT HAS BEEN MADE TO PREPARE ACCURATE DRAWINGS. HOWEVER, THE USER SHALL BE RESPONSIBLE FOR VERIFYING ALL DIMENSIONS AND BEING RESPONSIBLE FOR ANY CHANGES OR ADJUSTMENTS REQUIRED DURING ACTUAL CONSTRUCTION. NO REPRESENTATION IS MADE OR IMPLIED FOR ACCURACY.

OFFICE: 763.757.5997
FAX: 763.757.4383
ANDOVER, MINNESOTA
WWW.CROIXDESIGN.COM



BUILT BY:
SEMLER HOMES

SHEET
3
of 5
CADD FILE #
17024



NOTE!!!
8'-1 1/8" PLATE HEIGHT @ ENTIRE MAIN LEVEL (W.N.O.)

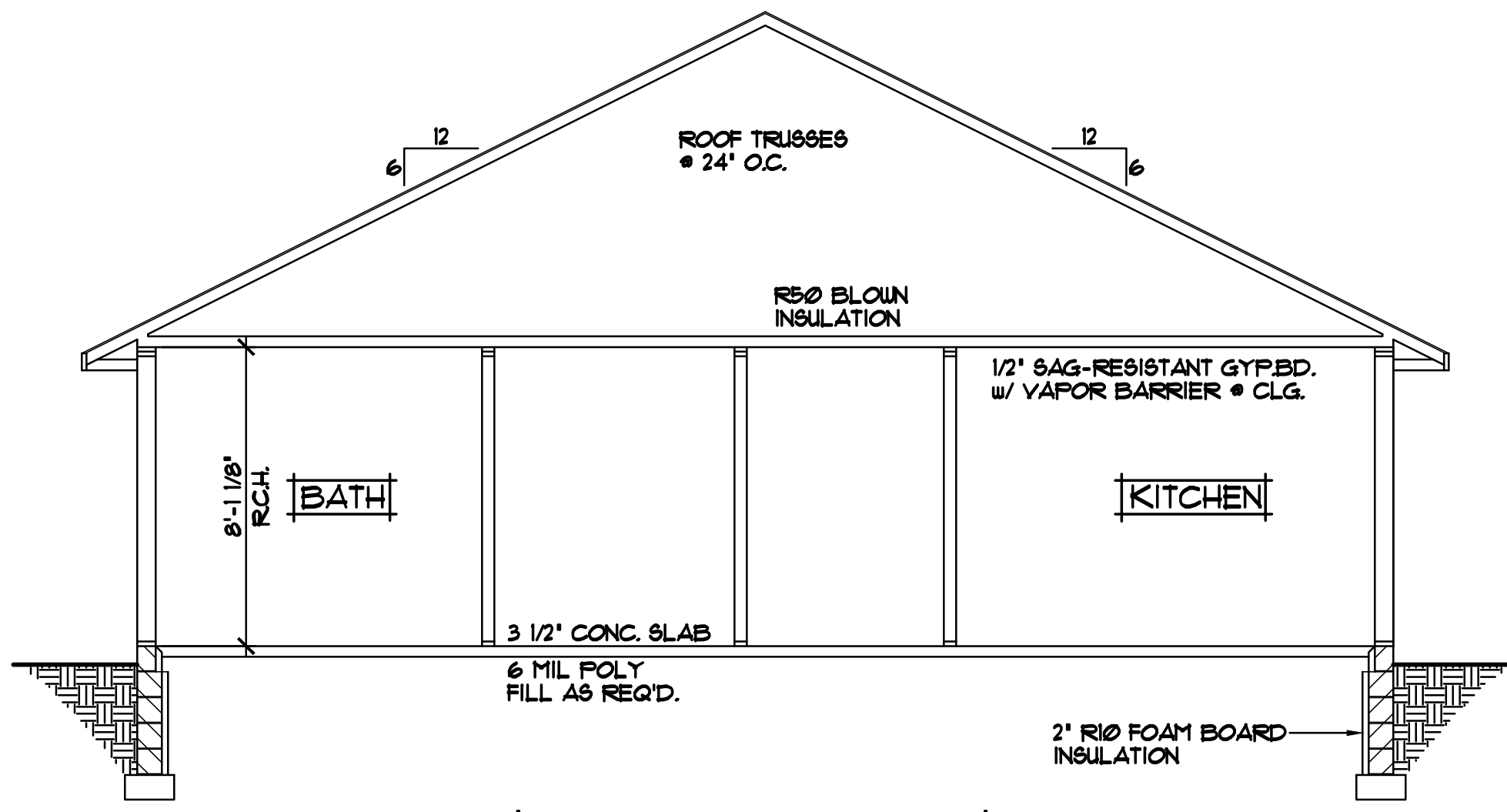
MAIN LEVEL FLOOR PLAN 1/4"=1'-0"
1347 SQ. FT. (46 SQ. FT. MECH. RM. NOT INCLUDED)

NOTE!!!
ALL WDW/DOOR OPENINGS TO HAVE (2)2x10 #2 GRADE HDR OR BETTER (W.N.O.)

NOTE!!!
TOP OF RO. FOR ALL WINDOWS TO BE 6'-10 1/2" FROM TOP OF CONC. BLK.

NOTE!!!
VECTOR VINYL WINDOWS SPECIFIED. VERIFY ALL DOOR & WINDOW ROUGH OPENINGS w/SUPPLIER (* INDICATES SASH LIMITER REQUIRED)

REVISIONS
XX/XX/XX 0000 BY:XX
XX/XX/XX 0000 BY:XX



CROSS SECTION "A" 1/4"=1'-0"

- ROOF CONSTRUCTION:**
- PRE-MANUFACTURED ROOF TRUSSES ENGINEERED BY SUPPLIER
 - 1/150 ROOF VENTS AT SOFFITS, 1/150 VENT AT RIDGE
 - AIR CHUTE AT EACH TRUSS SPACE
 - 7/16" OSB ROOF SHEATHING
 - 15# ROOFING FELT
 - ICE & WATER MEMBRANE APPLIED 24' BEYOND EXTERIOR WALL
 - 30 YEAR ARCHITECTURAL SHINGLES

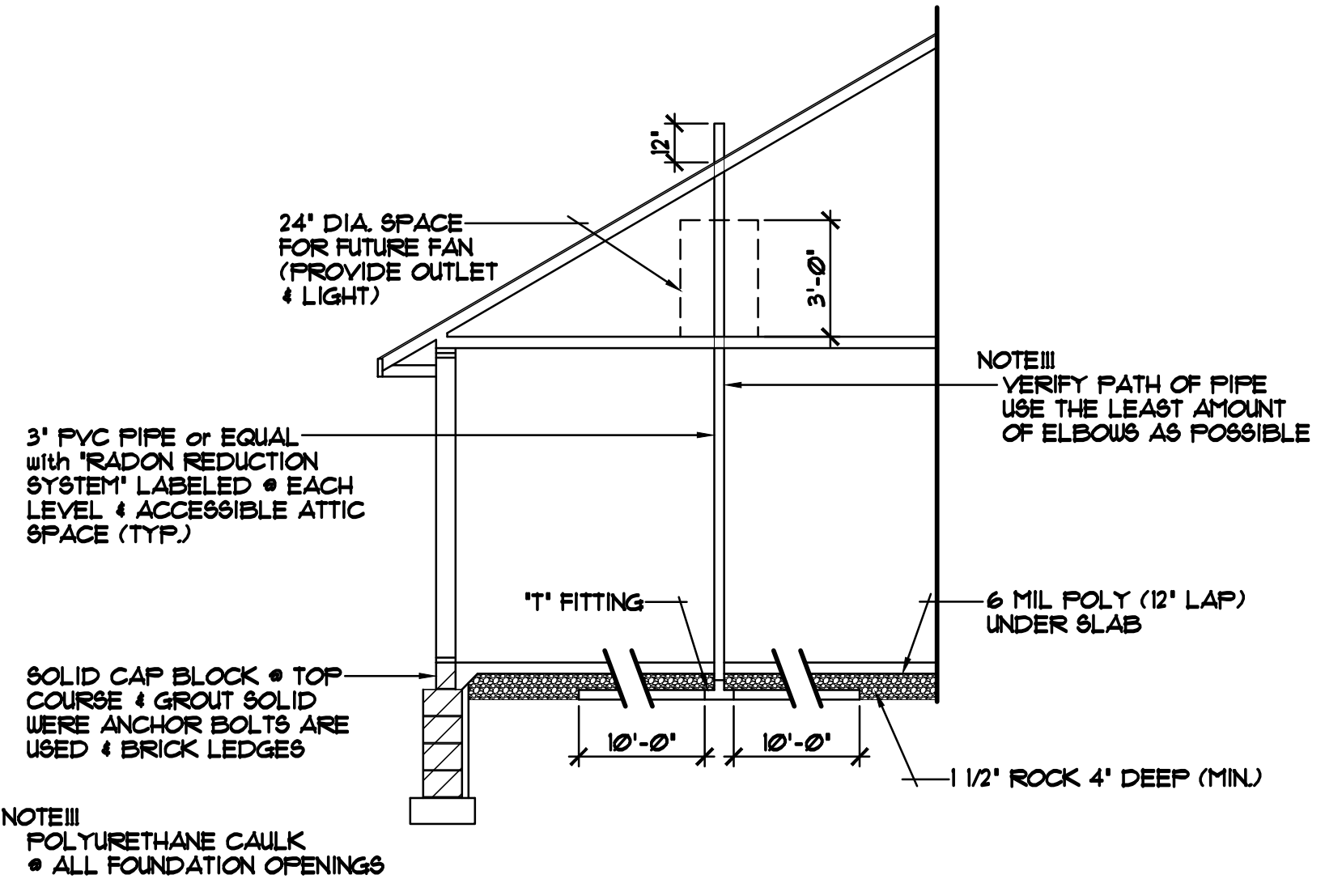
- SOFFIT / FASCIA:**
- 2x6 SUB FASCIA
 - ALUMINUM FASCIA COVER
 - ALUMINUM VENTED SOFFIT

- WALL CONSTRUCTION:**
- TYVEK HOUSE WRAP
 - 7/16" OSB SHEATHING
 - 2x6 STUDS • 16" O.C.
 - R21 F.G. BATT INSULATION
 - 4 MIL POLY VAPOR BARRIER
 - 1/2" GYPSUM BOARD AT INTERIOR

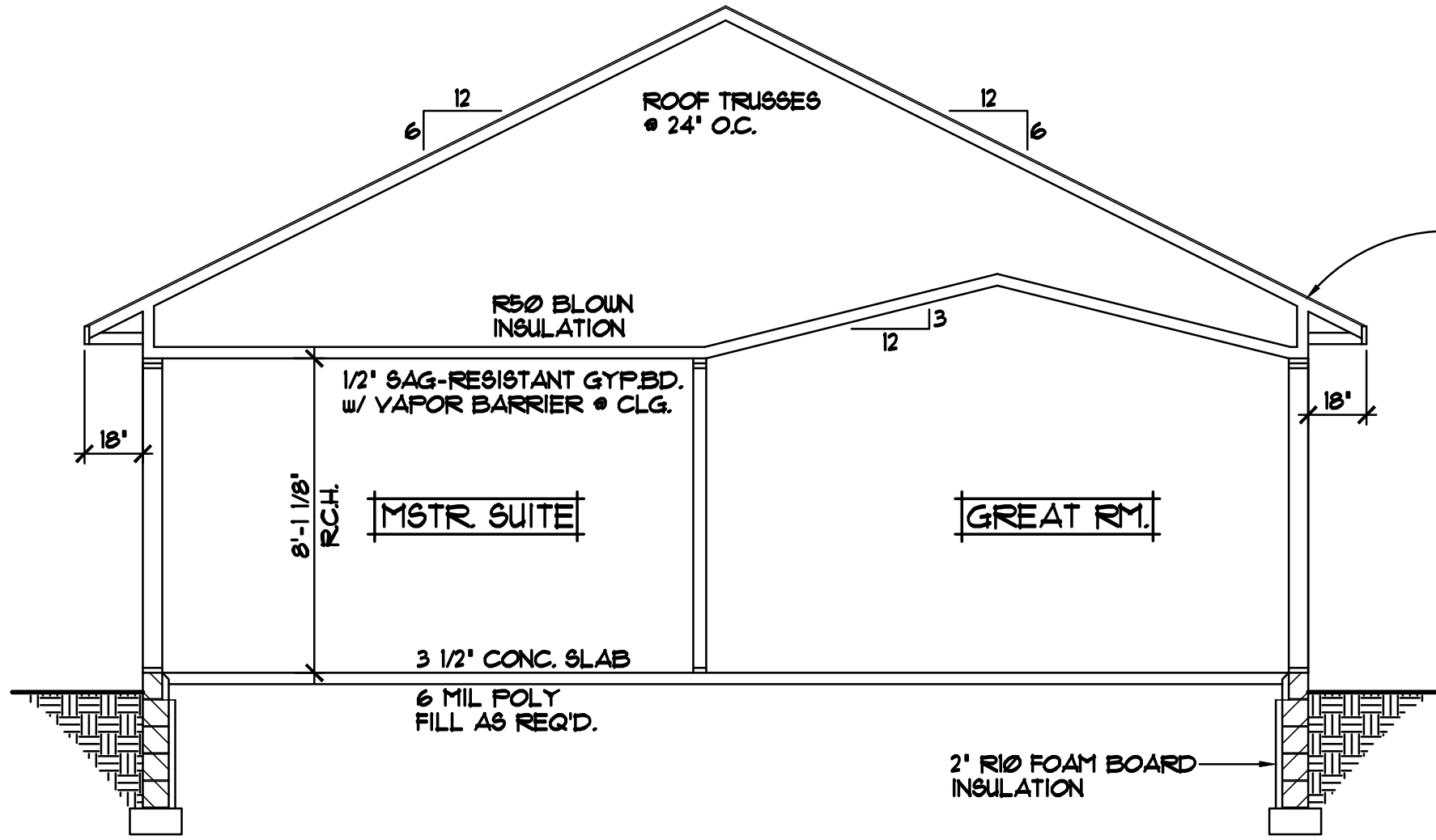
- SILL CONSTRUCTION:**
- 2x6 TREATED SILL PLATE w/SEALER
 - 1/2" ANCHOR BOLTS • 12" O.C.

SPECIAL NOTICE:
CROIX DESIGN AND DRAFTING, INC. ACCEPTS NO RESPONSIBILITY FOR ERRORS AND/OR OMISSIONS. THESE DRAWINGS ARE DESIGN CONCEPT ONLY. EVERY EFFORT HAS BEEN MADE TO PREVENT ERRORS, BUT THE USER MUST VERIFY ALL DIMENSIONS, MATERIALS, AND METHODS OF CONSTRUCTION. THE USER IS RESPONSIBLE FOR ANY CHANGES OR ADJUSTMENTS REQUIRED DURING CONSTRUCTION. NO REPRESENTATION IS MADE OR IMPLIED FOR ACCURACY.

OFFICE: 763.757.5997
FAX: 763.757.4383
ANDOVER, MINNESOTA
WWW.CROIXDESIGN.COM



ALTERNATE METHOD FOR PASSIVE RADON MITIGATION SYSTEM



CROSS SECTION "B" 1/4"=1'-0"

BUILT BY:
SEMLER HOMES

SHEET
4
of 5
CADD FILE #
11024

REVISIONS
XXXXXX 0000 BY:XX
XXXXXX 0000 BY:XX

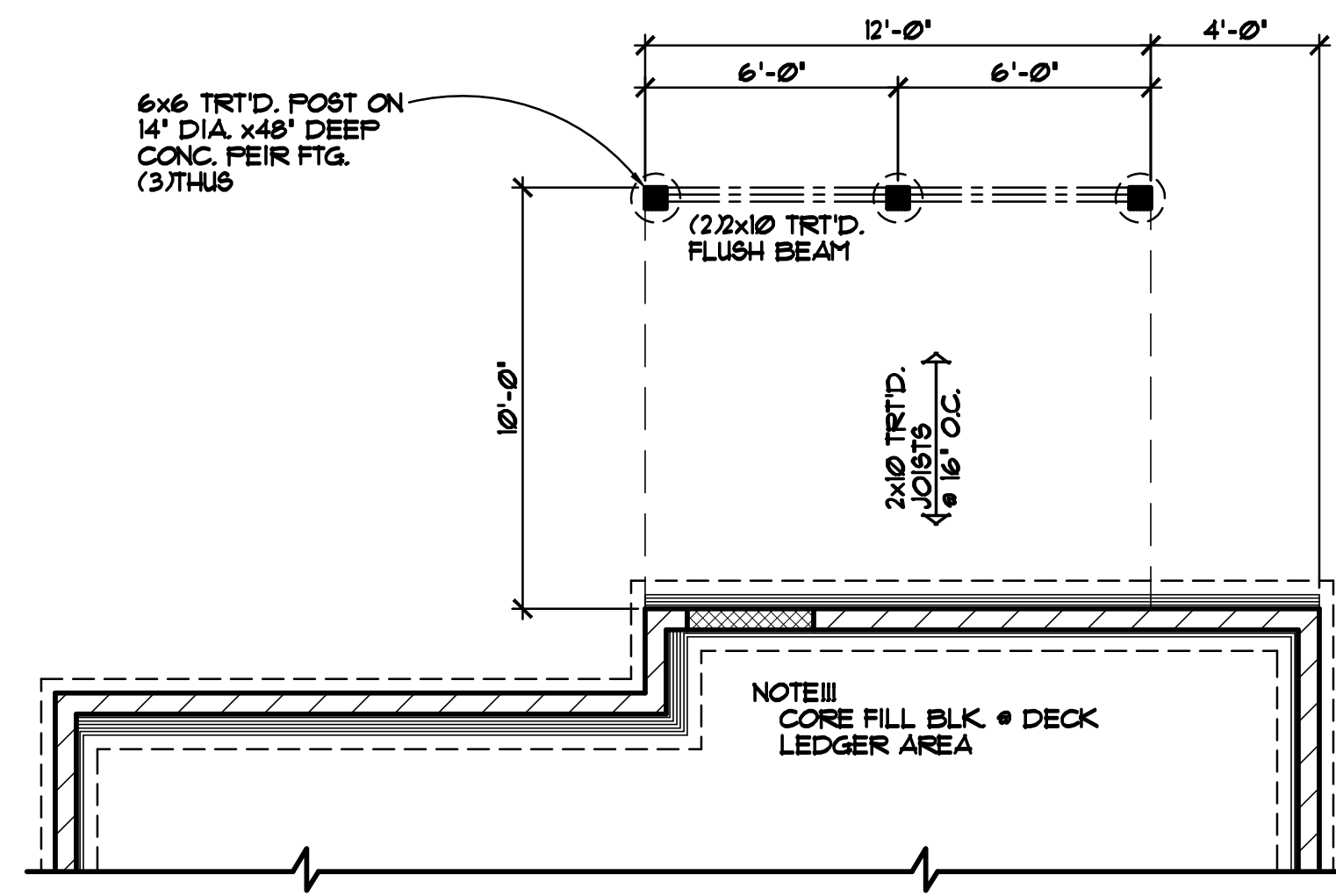
SPECIAL NOTICE:
CROIX DESIGN AND DRAFTING, INC. ACCEPTS NO RESPONSIBILITY FOR ERRORS AND/OR OMISSIONS. THESE DRAWINGS ARE DESIGN CONCEPT ONLY. EVERY EFFORT HAS BEEN MADE TO PREVENT ERRORS, BUT THE USER MUST VERIFY ALL DIMENSIONS AND CONDITIONS. THE USER SHALL BE RESPONSIBLE FOR ANY CHANGES OR ADJUSTMENTS REQUIRED DURING CONSTRUCTION. NO REPRESENTATION IS MADE OR IMPLIED FOR ACCURACY.

OFFICE: 763.757.5997
FAX: 763.757.4383
ANDOVER, MINNESOTA
WWW.CROIXDESIGN.COM

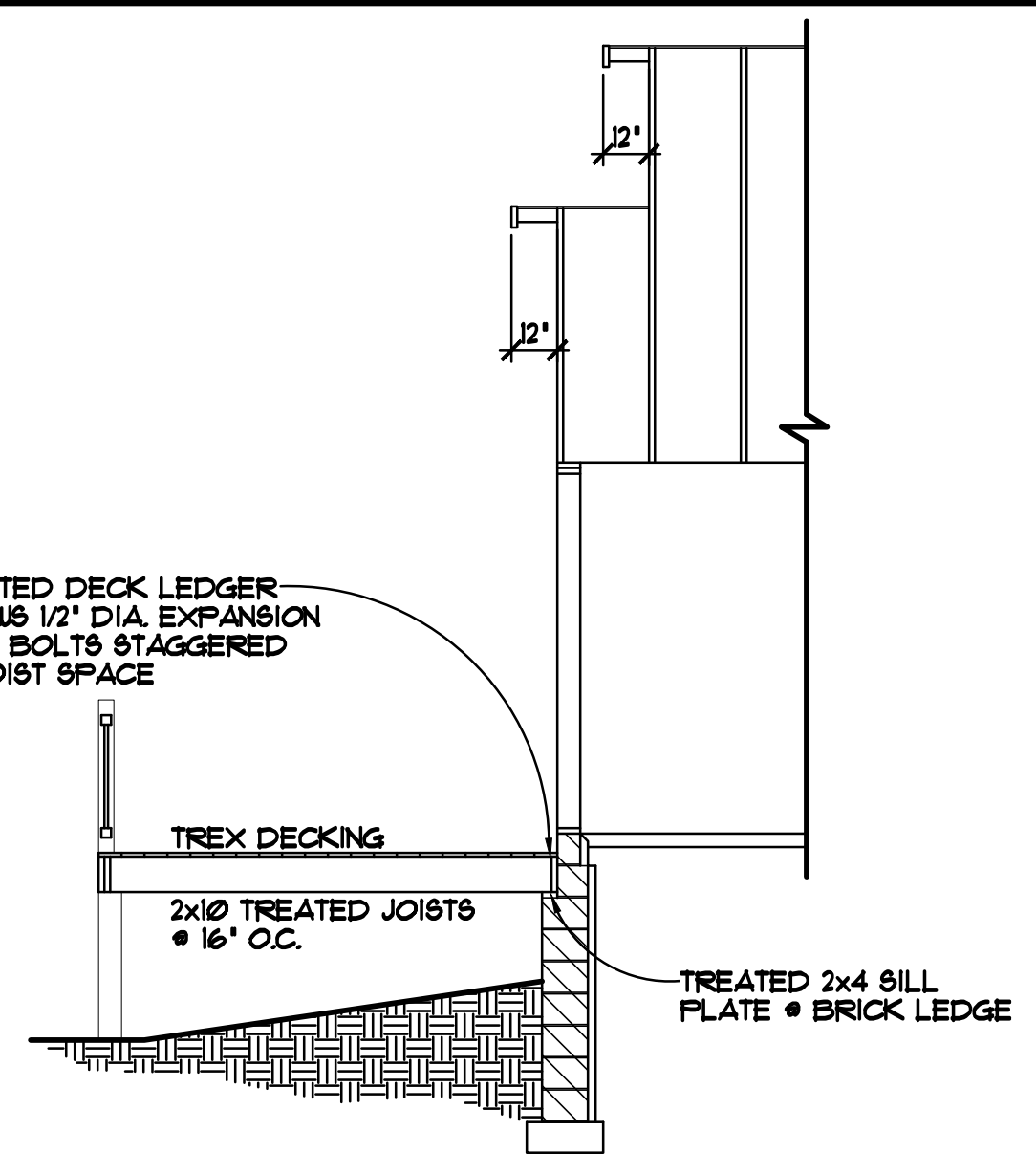


BUILT BY:
SEMLER HOMES

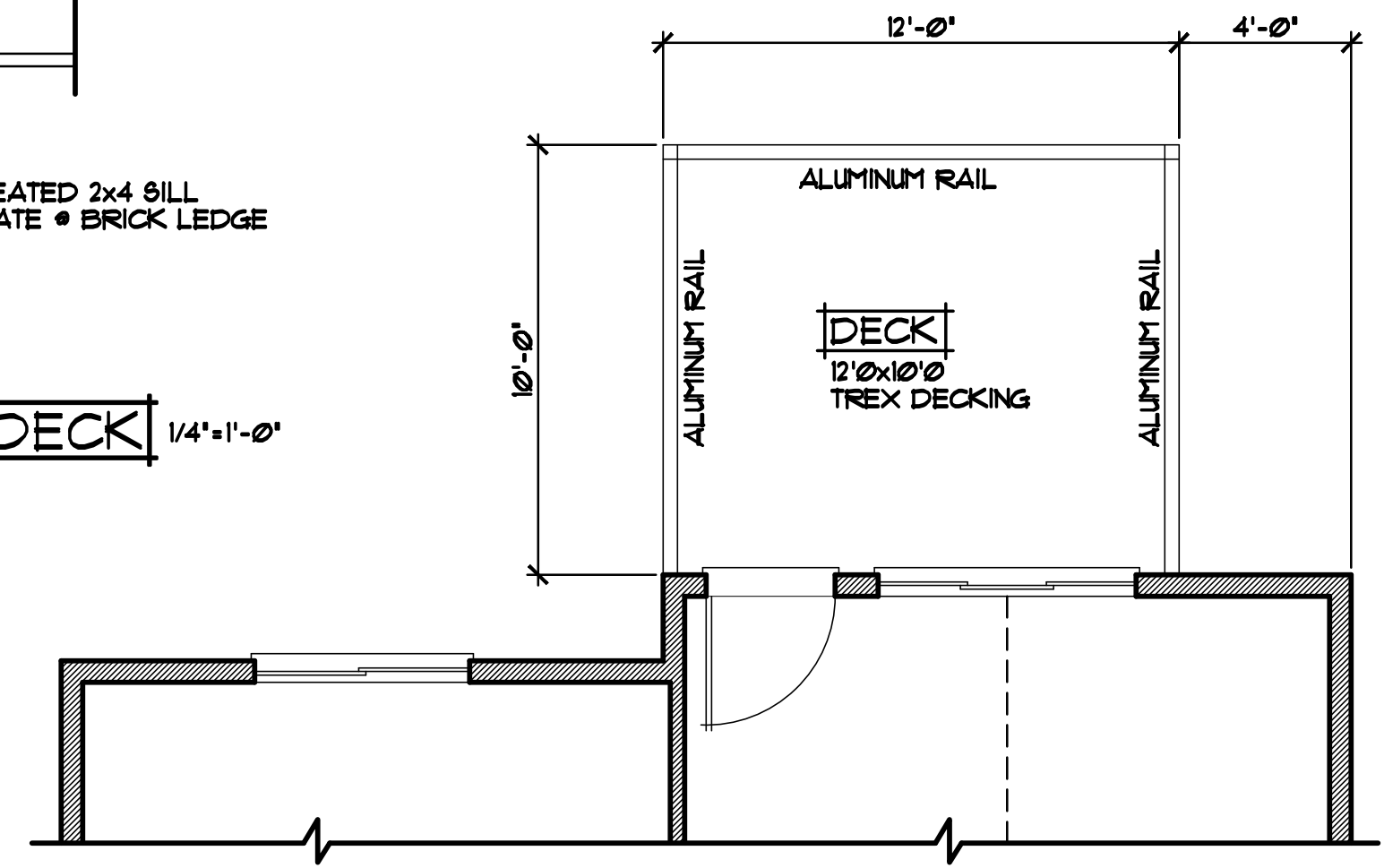
SHEET
5
OF 5
CADD FILE #
11024



DECK FOUNDATION PLAN 1/4"=1'-0"



CROSS SECTION @ DECK 1/4"=1'-0"



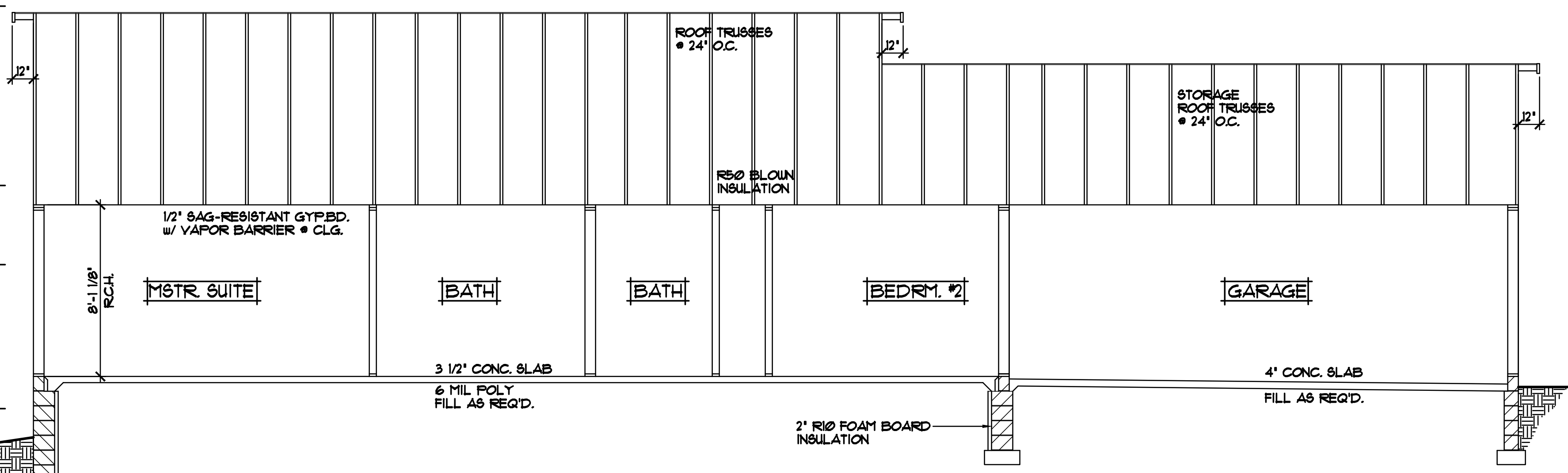
MAIN LEVEL DECK PLAN 1/4"=1'-0"

- ROOF CONSTRUCTION:**
- PRE-MANUFACTURED ROOF TRUSSES ENGINEERED BY SUPPLIER
 - 1/150 ROOF VENTS AT SOFFITS, 1/150 VENT AT RIDGE
 - AIR CHUTE AT EACH TRUSS SPACE
 - 7/16" OSB ROOF SHEATHING
 - 15# ROOFING FELT
 - ICE & WATER MEMBRANE APPLIED 24" BEYOND EXTERIOR WALL
 - 30 YEAR ARCHITECTURAL SHINGLES

- SOFFIT / FASCIA:**
- 2x6 SUB FASCIA
 - ALUMINUM FASCIA COVER
 - ALUMINUM VENTED SOFFIT

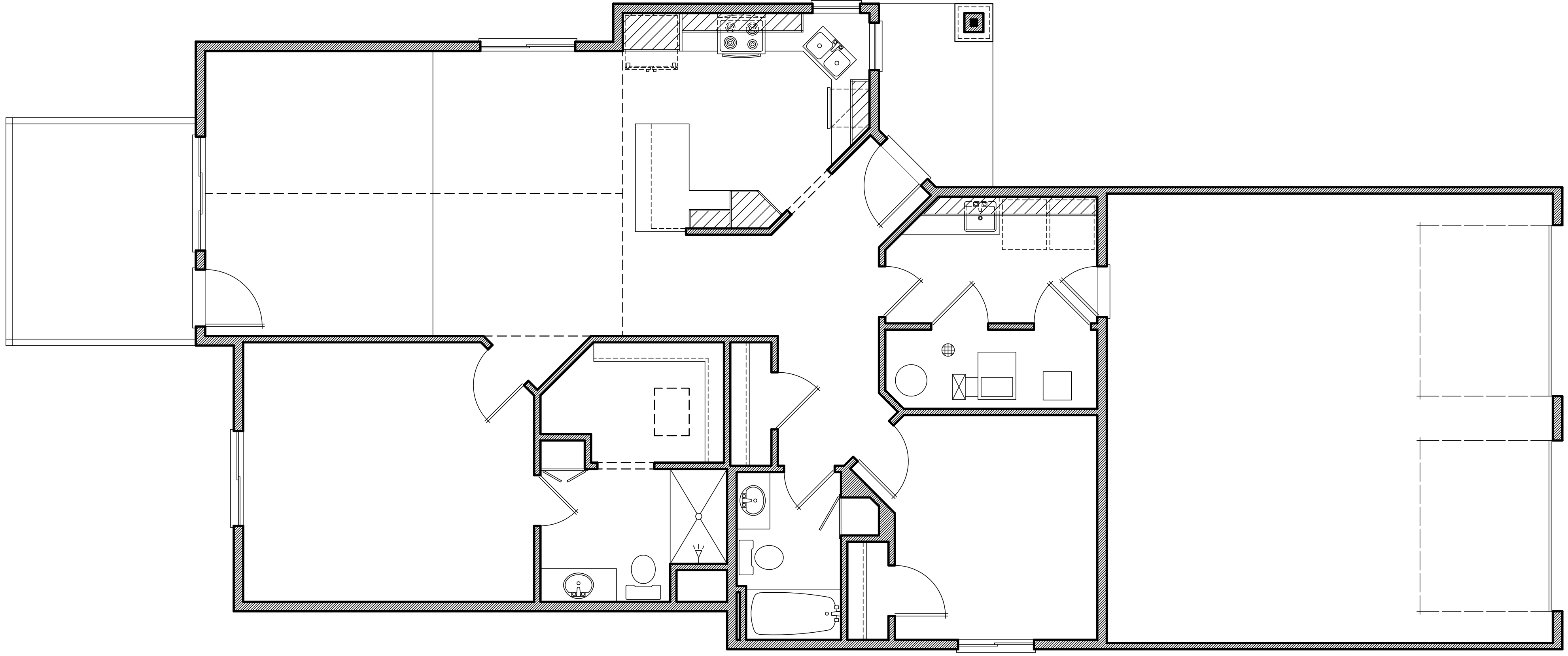
- WALL CONSTRUCTION:**
- TYVEK HOUSE WRAP
 - 7/16" OSB SHEATHING
 - 2x6 STUDS @ 16" O.C.
 - R21 F.G. BATT INSULATION
 - 4 MIL POLY VAPOR BARRIER
 - 1/2" GYPSUM BOARD AT INTERIOR

- SILL CONSTRUCTION:**
- 2x6 TREATED SILL PLATE w/SEALER
 - 1/2" ANCHOR BOLTS @ 12" O.C.



CROSS SECTION "C" 1/4"=1'-0"

LIGHT FIXTURE SYMBOLS	
	LIGHT - CEILING FIXTURE
	LIGHT - RECESSED FIXTURE
	LIGHT - RECESSED DIRECTIONAL
	LIGHT - PENDANT
	LIGHT - TRACK
	LIGHT - FLUORESCENT
	LIGHT - WALL MOUNTED



ELECTRICAL PLAN 1/4"=1'-0"

REVISIONS
XXXXXX 0000 BY:XX
XXXXXX 0000 BY:XX

SPECIAL NOTICE:
CROIX DESIGN AND DRAFTING, INC. ACCEPTS NO RESPONSIBILITY FOR ERRORS AND/OR OMISSIONS. THESE DRAWINGS ARE DESIGN CONCEPT ONLY. EVERY EFFORT HAS BEEN MADE TO PREPARE AN ACCURATE SET OF DRAWINGS. HOWEVER, THE CLIENT SHALL BE RESPONSIBLE FOR VERIFYING ALL DIMENSIONS AND CONDITIONS. THE CLIENT SHALL BE RESPONSIBLE FOR ANY CHANGES OR ADJUSTMENTS REQUIRED DURING CONSTRUCTION. NO REPRESENTATION IS MADE OR IMPLIED FOR ACCURACY.

OFFICE: 763.757.5997
FAX: 763.757.4383
ANDOVER, MINNESOTA
WWW.CROIXDESIGN.COM



BUILT BY:
SEMLER HOMES

SHEET
of X
CADD FILE #
17024