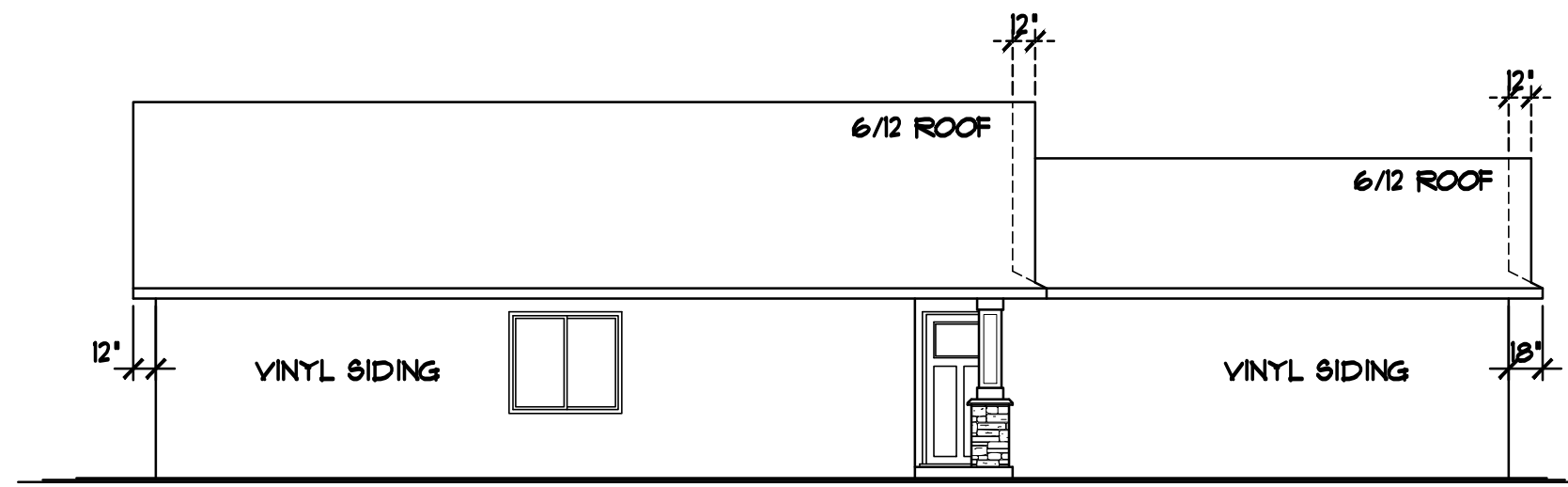
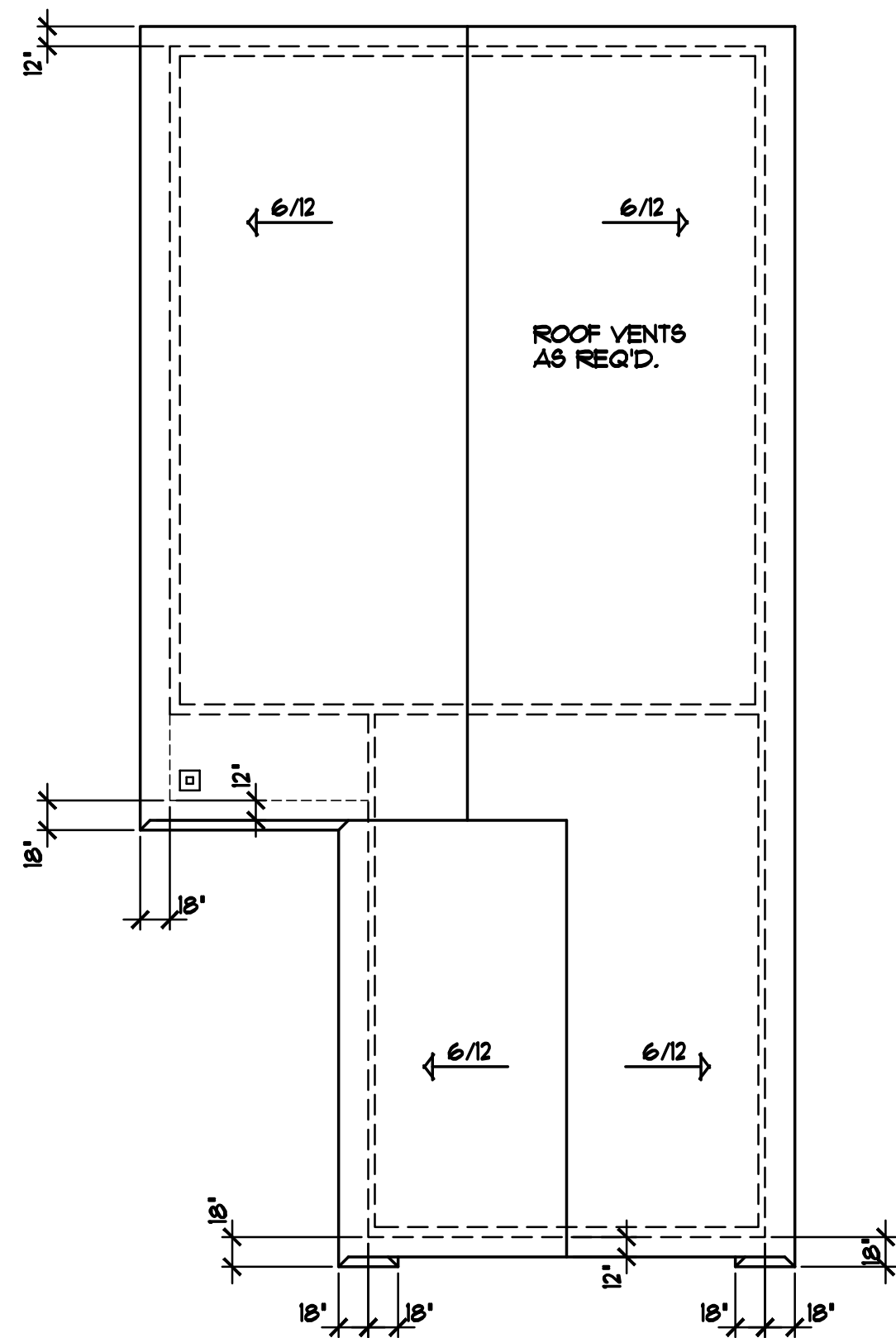


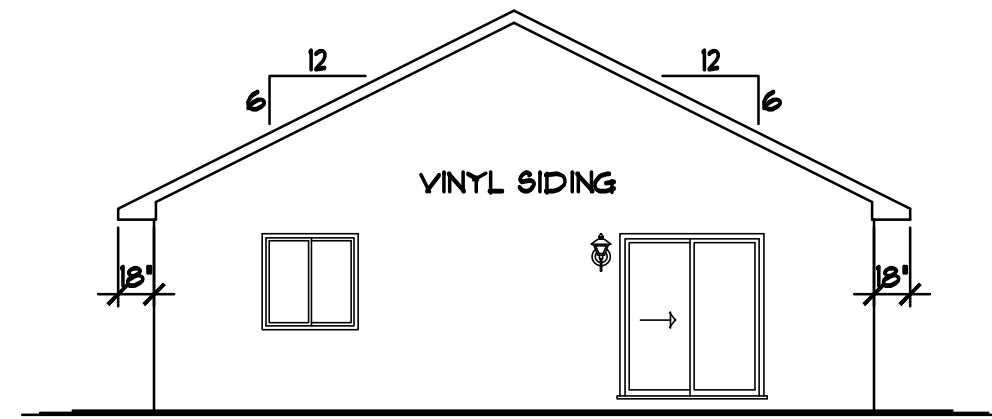
RIGHT ELEVATION 1/8"=1'-0"



LEFT ELEVATION 1/8"=1'-0"

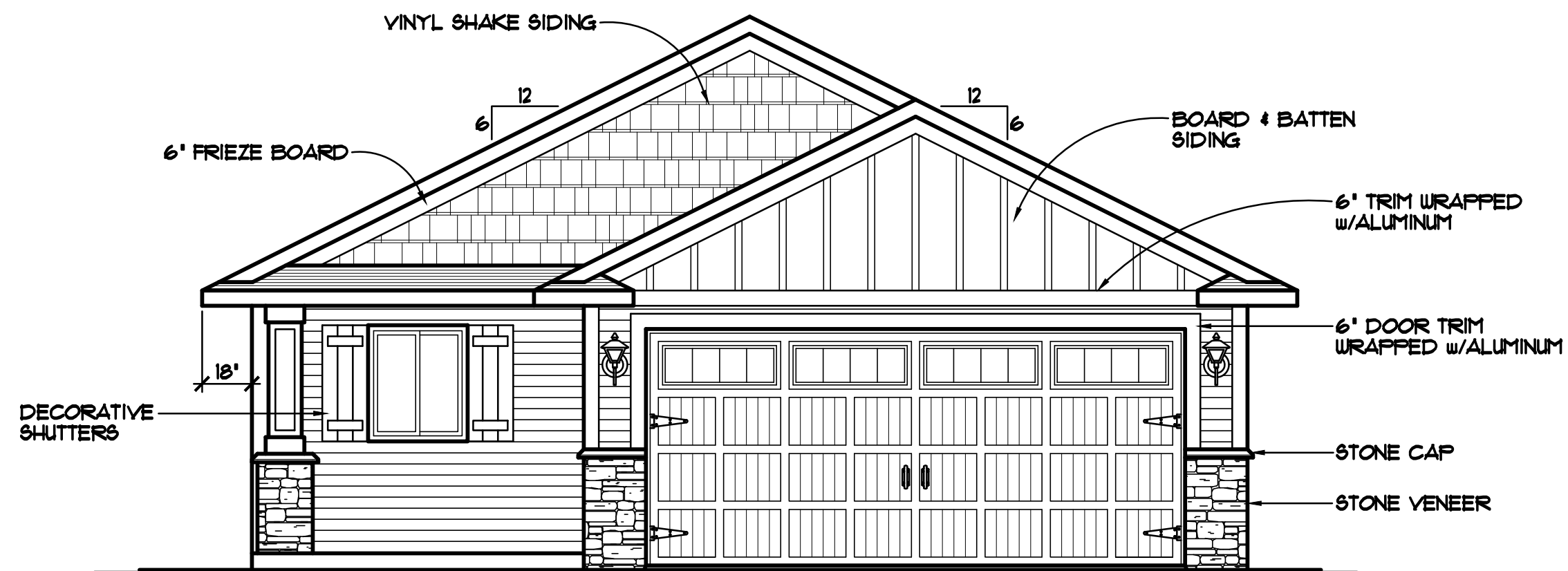


BIRD'S-EYE ROOF PLAN 1/8"=1'-0"



REAR ELEVATION 1/8"=1'-0"

- VECTOR WINDOWS SPEC'D. VERIFY ALL DOOR AND WINDOW ROUGH OPENINGS WITH SUPPLIER
- ALUMINUM SOFFITS & FASCIA
- VINYL SIDING/CORNER TRIM
- STONE VENEER AS SHOWN



16'0"x10'4"30 CARRIAGE HOUSE COLLECTION, STEEL GARAGE DOOR with 587 STOCKBRIDGE WINDOWS

FRONT ELEVATION 1/4"=1'-0"

1023 SQ. FT. MAIN LEVEL
74 SQ. FT. MECH. RM. NOT INCLUDED

THE:

ISANTI MODEL

1005 WINSOME WAY NW
LOT 76, BLOCK 3, VILLAGES ON THE RUM
ISANTI, MN

© COPYRIGHT 2014-2017 NOTICE, ALL RIGHTS RESERVED CROIX DESIGN and DRAFTING, INC.

REVISIONS	BY
143071	N.F.
15276	N.F.
15320	N.F.
16054	N.F.

SPECIAL NOTICE: CROIX DESIGN and DRAFTING, INC. ACCEPTS NO RESPONSIBILITY FOR ERRORS AND/OR OMISSIONS. THESE DRAWINGS ARE DESIGN CONCEPT ONLY. EVERY EFFORT HAS BEEN MADE TO DESIGN ACCURATELY. THE OWNER, GENERAL CONTRACTOR, SUB-CONTRACTORS, AND SUPPLIERS MUST CHECK ALL DETAILS AND DIMENSIONS AND BE RESPONSIBLE FOR ANY CHANGES OR ADJUSTMENTS REQUIRED DURING ACTUAL CONSTRUCTION. NO REPRESENTATION IS MADE OR IMPLIED FOR ACCURACY.

© COPYRIGHT NOTICE, ALL RIGHTS RESERVED
THESE ARCHITECTURAL PLANS AND ALL RELATED WORKS ARE PROTECTED BY UNITED STATES COPYRIGHT LAWS, AND MAY NOT BE REPRODUCED OR TRANSMITTED IN ANY FORM OR BY ANY MEANS, WITHOUT THE EXPRESS WRITTEN PERMISSION OF CROIX DESIGN and DRAFTING, INC.

DESIGN and DRAFTING BY:

ARCHITECTURAL DESIGN and DRAFTING SERVICE • HOME PLAN SERVICE • CUSTOM HOMES • REMODELING • PHONE: 763.757.5997 • ANDOVER, MINNESOTA • WWW.CROIXDESIGN.COM

BUILT BY:

1005 STATION PARKWAY NW ANDOVER, MN 55004
LIC. # 3649
763-754-5518

DRAWN	N.F.
CHECKED	XX
DATE:	4/17/2016
SCALE:	AS NOTED
CADD FILE #	17142
SHEET	1 OF 4

REVISIONS
XXXXXX 0000 BY:XX
XXXXXX 0000 BY:XX

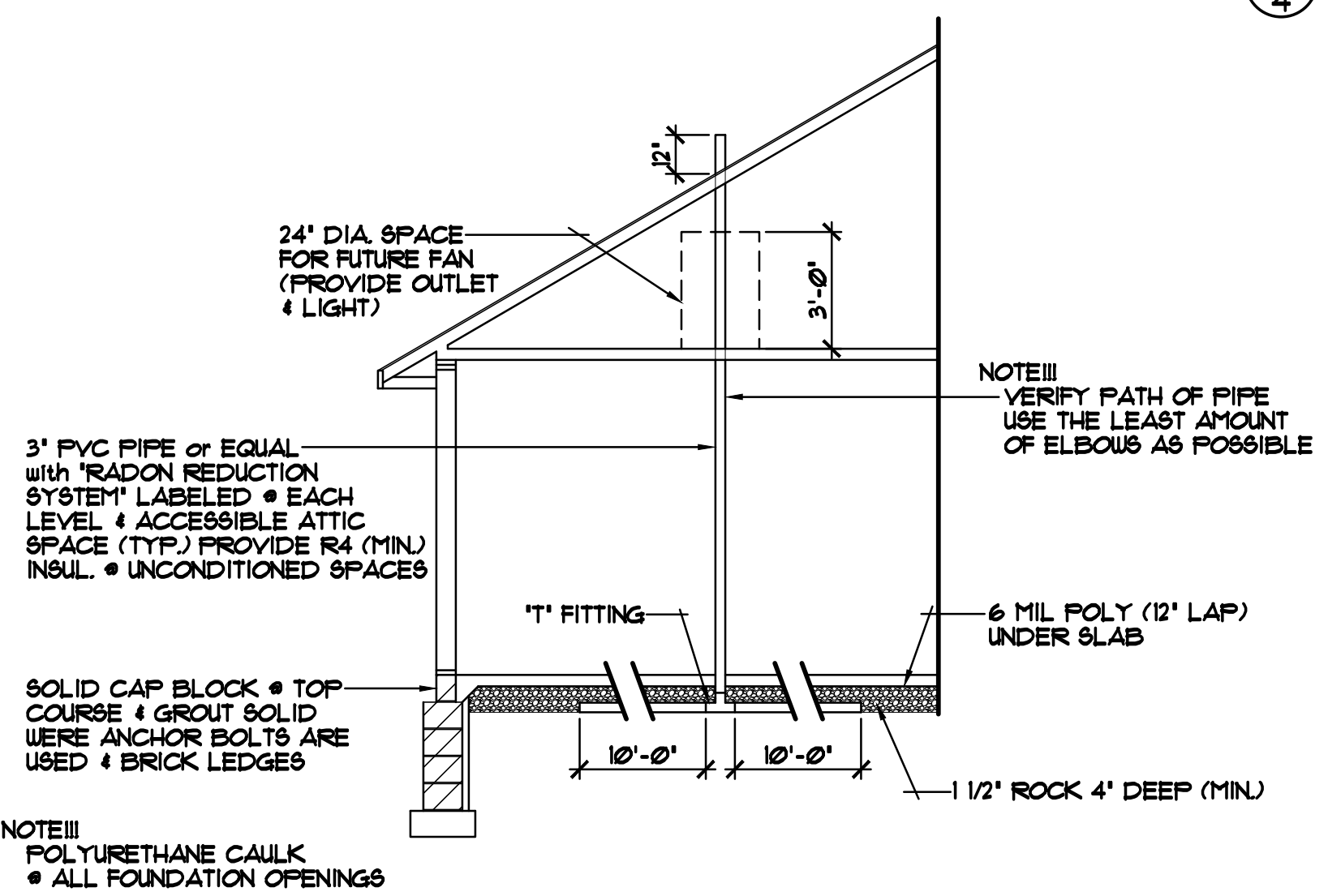
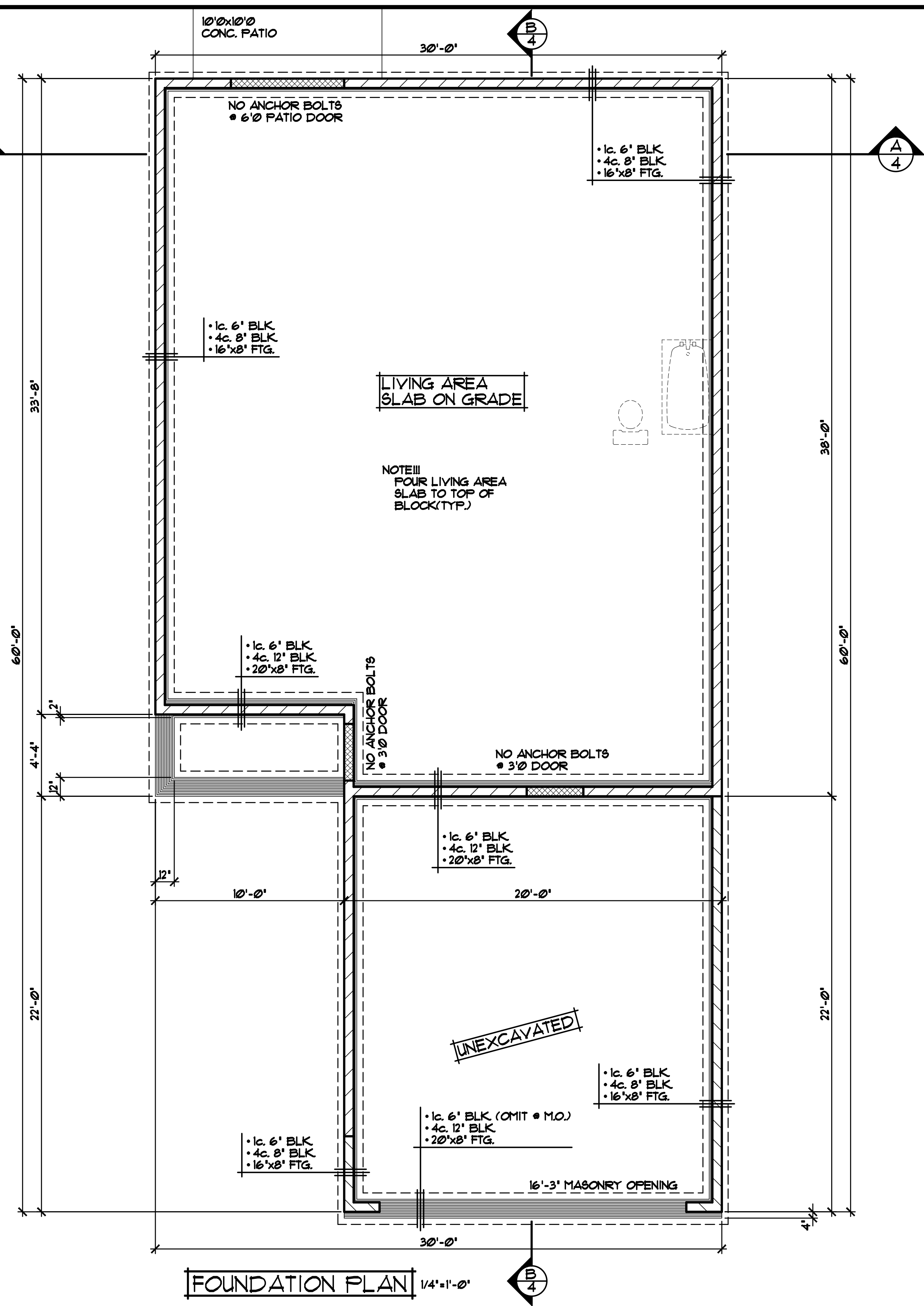
SPECIAL NOTICE:
CROIX DESIGN AND DRAFTING, INC. ACCEPTS NO RESPONSIBILITY FOR ERRORS AND/OR OMISSIONS. THESE DRAWINGS ARE DESIGN CONCEPT ONLY. EVERY EFFORT HAS BEEN MADE TO PREVENT ERRORS, BUT THE USER MUST VERIFY ALL DIMENSIONS AND CONDITIONS ON THE JOB. THE USER SHALL BE RESPONSIBLE FOR ANY CHANGES OR ADJUSTMENTS REQUIRED DURING CONSTRUCTION. NO REPRESENTATION IS MADE OR IMPLIED FOR ACCURACY.

OFFICE: 763.757.5997
FAX: 763.757.4383
ANDOVER, MINNESOTA
WWW.CROIXDESIGN.COM



BUILT BY:
SEMLER HOMES

SHEET
2
of 4
CADD FILE #
1142



ALTERNATE METHOD FOR PASSIVE RADON MITIGATION SYSTEM

ALL HEIGHT CALCULATIONS FOR FOUNDATIONS ARE BASED ON THE USE OF FULL 8" HIGH BLOCK w/ 3/8" JOINTS. IF MODULAR BLOCK IS USED, CONTRACTORS SHOULD ADJUST HEIGHTS ACCORDINGLY.

FOUNDATION PLAN 1/4"=1'-0"

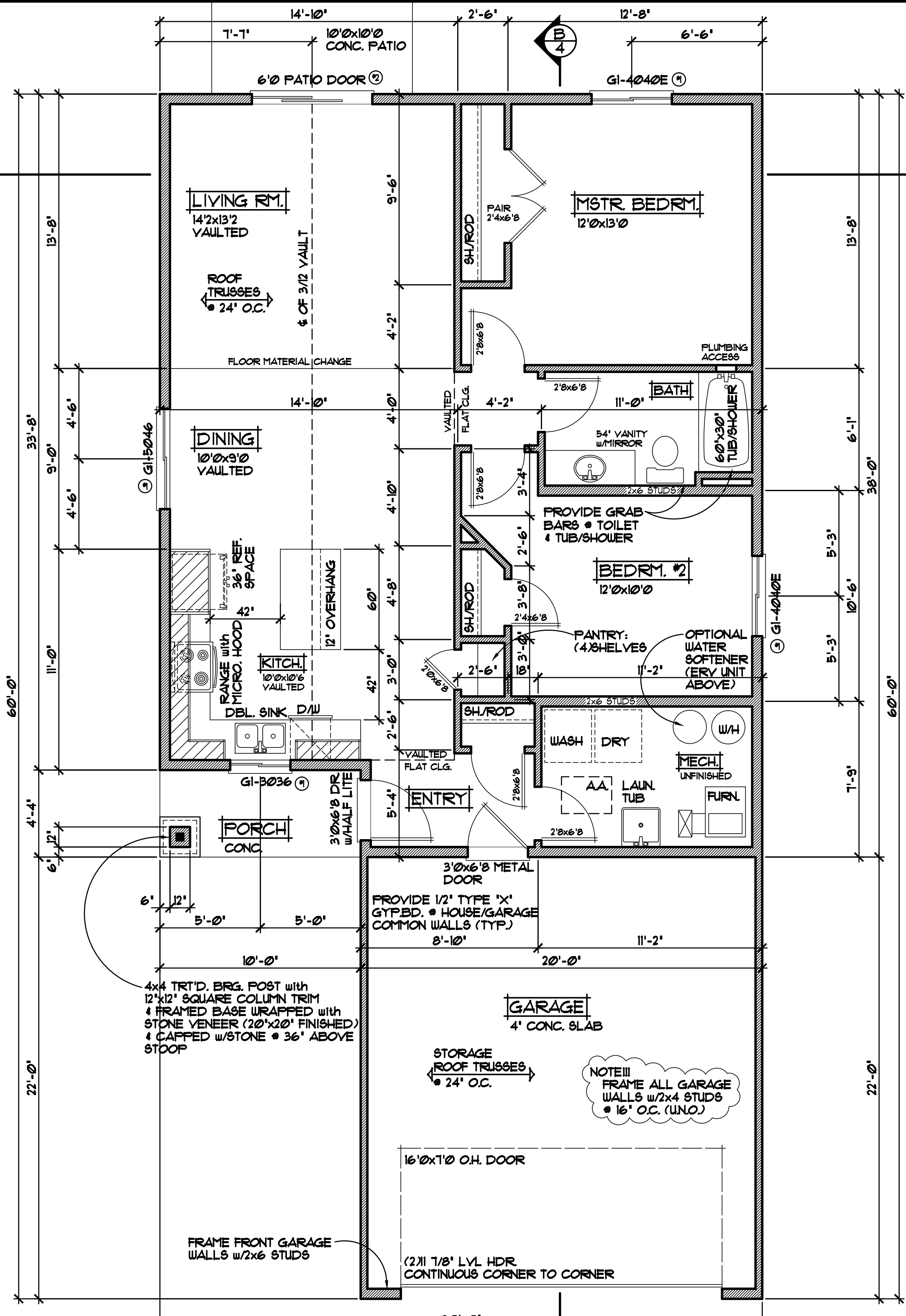
WINDOW and DOOR PERFORMANCE DATA U-VALUE / SHGC	
① SLIDER UNIT	U-VALUE = 0.30 SHGC = 0.33
② SLIDING PATIO DOOR	U-VALUE = 0.31 SHGC = 0.34

NOTE III
ALL WDW/DOOR OPENINGS
TO HAVE (2.2x10" 2 GRADE
HDR OR BETTER (UNO.)

NOTE III
TOP OF RO. FOR ALL
WINDOWS TO BE
6'-10 1/2" FROM
TOP OF CONC. BLK.

NOTE III
VERIFY ALL MECHANICAL
EQUIPMENT LOCATIONS.
LOCATIONS ON PLAN ARE
REPRESENTATION ONLY

NOTE III
8'-1 1/8" PLATE
HEIGHT • ENTIRE
MAIN LEVEL (UNO.)



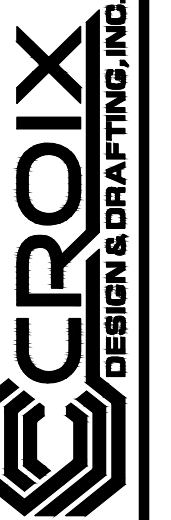
MAIN LEVEL FLOOR PLAN 1/4" = 1'-0"
1023 SQ. FT. MAIN LEVEL (74 SQ. FT. MECH. RM. NOT INCLUDED)

VECTOR WINDOWS SPEC'D.
VERIFY ALL DOOR AND WINDOW
ROUGH OPENINGS WITH SUPPLIER

REVISIONS
XXXXXX 0000 BY:XX
XXXXXX 0000 BY:XX

SPECIAL NOTICE:
CROIX DESIGN AND DRAFTING, INC. ACCEPTS NO RESPONSIBILITY FOR ERRORS AND/OR OMISSIONS. THESE DRAWINGS ARE DESIGN CONCEPT ONLY. EVERY EFFORT HAS BEEN MADE TO PREPARE THESE DRAWINGS ACCURATELY. HOWEVER, THE USER SHALL BE RESPONSIBLE FOR VERIFYING ALL DIMENSIONS AND BEING RESPONSIBLE FOR ANY CHANGES OR ADJUSTMENTS REQUIRED DURING ACTUAL CONSTRUCTION. NO REPRESENTATION IS MADE OR IMPLIED FOR ACCURACY.

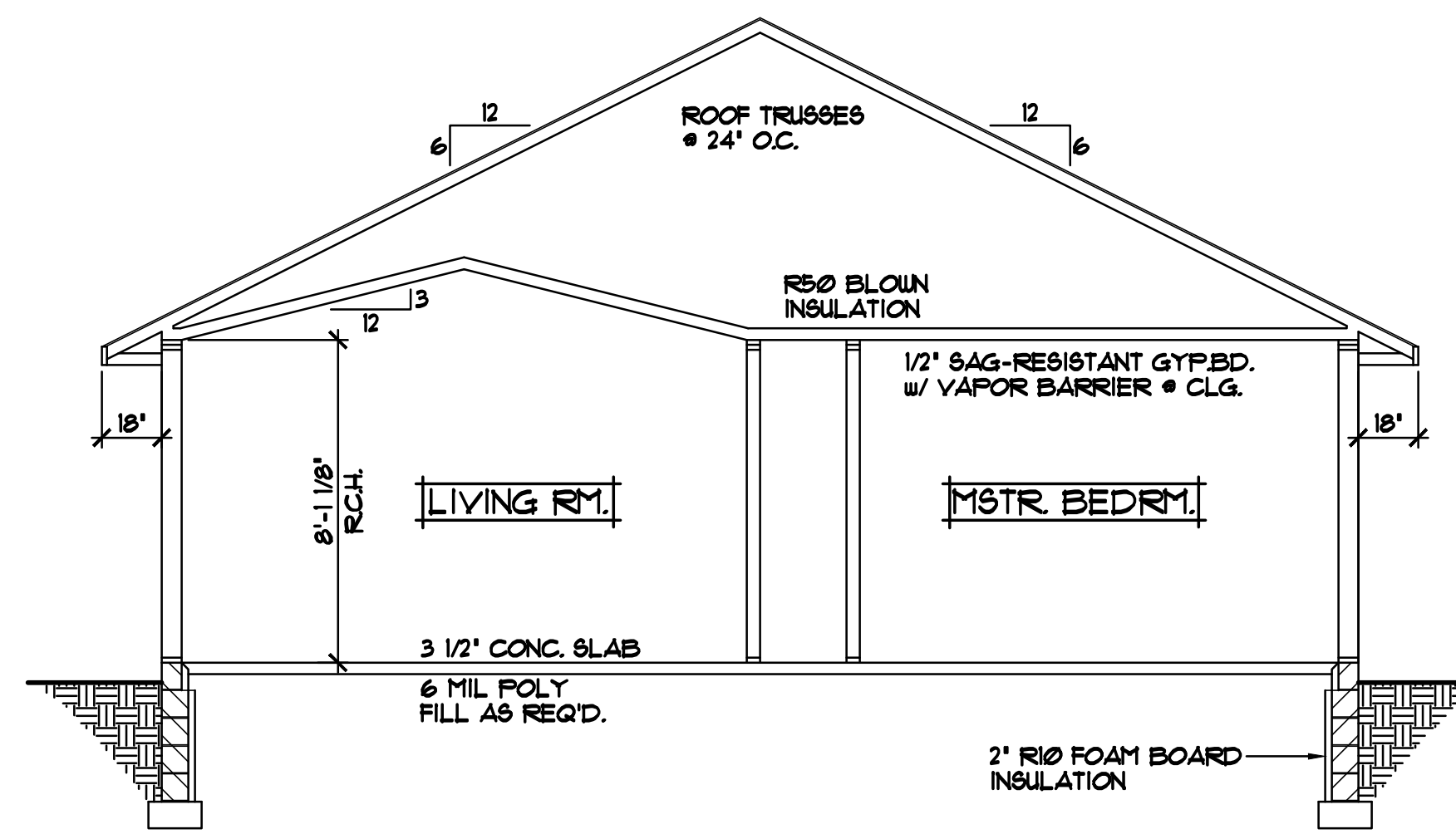
OFFICE: 763.757.5997
FAX: 763.757.4383
ANDOVER, MINNESOTA
WWW.CROIXDESIGN.COM



BUILT BY:
SEMLER HOMES

SHEET
3
of 4
CADD FILE #
1142

REVISIONS	
XXXXXX	0000
BY:XX	
XXXXXX	0000
BY:XX	



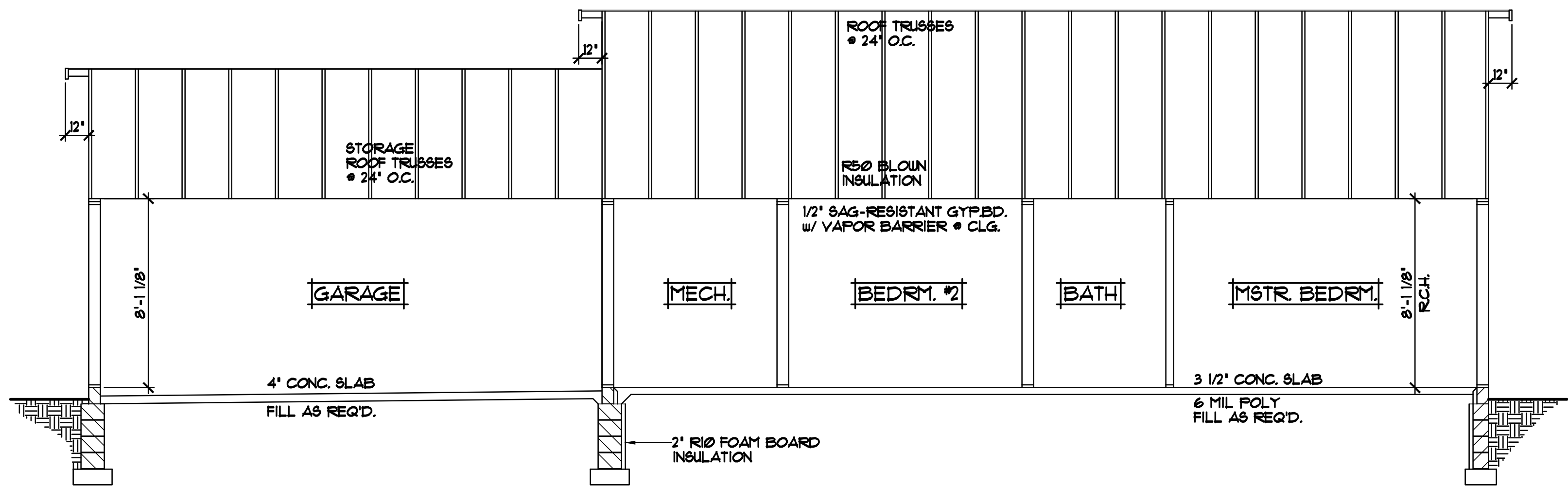
CROSS SECTION "A" 1/4"=1'-0"

- ROOF CONSTRUCTION:**
- PRE-MANUFACTURED ROOF TRUSSES-ENGINEERED BY SUPPLIER
 - 1/150 ROOF VENT AT SOFFITS, 1/150 VENT AT RIDGE
 - AIR CHUTE AT EACH TRUSS SPACE
 - 1/16" ROOF SHEATHING
 - 15# ROOFING FELT
 - ICE & WATER MEMBRANE APPLIED 24" PAST EXTERIOR WALL
 - 30 YEAR RAISED TAB SHINGLES

- SOFFIT / FASCIA:**
- 2x6 SUB-FASCIA
 - MAINTENANCE FREE FASCIA COVER
 - MAINTENANCE FREE VENTED SOFFIT

- WALL CONSTRUCTION:**
- TYVEK HOUSE WRAP
 - 1/16" OSB SHEATHING
 - 2x6 STUDS @ 16" O.C.
 - WINDOWS PER SPEC'S.
 - R-21 FG. BATT INSULATION
 - 4 MIL POLY VAPOR BARRIER
 - 1/2" GYPSUM BOARD

- SILL CONSTRUCTION:**
- 2x6 SILL PLATE & SEALER
 - 1/2" ANCHOR BOLTS @ 12" O.C.



CROSS SECTION "B" 1/4"=1'-0"

ALL HEIGHT CALCULATIONS FOR FOUNDATIONS ARE BASED ON THE USE OF FULL 8" HIGH BLOCK w/ 3/8" JOINTS. IF MODULAR BLOCK IS USED, CONTRACTORS SHOULD ADJUST HEIGHTS ACCORDINGLY.

SPECIAL NOTICE:
CROIX DESIGN AND DRAFTING, INC. ACCEPTS NO RESPONSIBILITY FOR ERRORS AND/OR OMISSIONS. THESE DRAWINGS ARE DESIGN CONCEPT ONLY. EVERY EFFORT HAS BEEN MADE TO PREVENT CONFLICTS AND OMISSIONS. THE USER OF THESE DRAWINGS SHALL BE RESPONSIBLE FOR VERIFYING ALL DIMENSIONS AND BE RESPONSIBLE FOR ANY CHANGES OR ADJUSTMENTS REQUIRED DURING ACTUAL CONSTRUCTION. NO REPRESENTATION IS MADE OR IMPLIED FOR ACCURACY.

OFFICE: 763.757.5997
FAX: 763.757.4383
ANDOVER, MINNESOTA
WWW.CROIXDESIGN.COM



BUILT BY:
SEMLER HOMES

SHEET
4
of 4
CADD FILE #
11142

REVISIONS	
XXXXXX	0000
BY:XX	
XXXXXX	0000
BY:XX	

SPECIAL NOTICE:
 CROIX DESIGN AND DRAFTING, INC. ACCEPTS NO RESPONSIBILITY FOR ERRORS AND/OR OMISSIONS. THESE DRAWINGS ARE DESIGN CONCEPT ONLY. EVERY EFFORT HAS BEEN MADE TO PREVENT ERRORS AND OMISSIONS. THE USER OF THESE DRAWINGS SHALL BE RESPONSIBLE FOR VERIFYING ALL DIMENSIONS AND CONDITIONS. THE USER SHALL BE RESPONSIBLE FOR ANY CHANGES OR ADJUSTMENTS REQUIRED DURING CONSTRUCTION. NO REPRESENTATION IS MADE OR IMPLIED FOR ACCURACY.

OFFICE: 763.757.5997
 FAX: 763.757.4383
 ANDOVER, MINNESOTA
 WWW.CROIXDESIGN.COM



BUILT BY:
SEMLER HOMES

SHEET
 of X
 CADD FILE #
 11142

ELECTRICAL and MECHANICAL SYMBOLS			
▽	TELEPHONE JACK	☉	EXHAUST FAN
▼	TV/CABLE JACK	○	LIGHT - CEILING FIXTURE
Ⓢ	SWITCH - SINGLE	⊖	LIGHT - RECESSED FIXTURE
Ⓢ ₃	SWITCH - THREE WAY	⊖	LIGHT - RECESSED DIRECTIONAL
Ⓢ ₄	SWITCH - FOUR WAY	⊖	LIGHT - PENDANT
Ⓢ _d	SWITCH - DIMMER	△	LIGHT - TRACK
Ⓢ _{FC}	SWITCH - FAN CONTROLS	— — —	LIGHT - FLUORESCENT
Ⓢ	OUTLET - DUPLEX	○	LIGHT - WALL MOUNTED
Ⓢ	OUTLET - DUPLEX SWITCHED	⊖	FLOOR DRAIN
Ⓢ _{GF1}	OUTLET - GROUND FAULT	⊖	HOSE BIBB
Ⓢ _{WP}	OUTLET - WEATHERPROOF	⊖	GAS OUTLET
Ⓢ	OUTLET - FLOOR/SOFFIT MOUNT	⊖	HYAC- SUPPLY VENT
Ⓢ ₂₂₀	OUTLET - RANGE OR DRYER	⊖	HYAC- RETURN VENT
Ⓢ	OUTLET - QUAD		
Ⓢ _{SD}	SMOKE DETECTOR		

