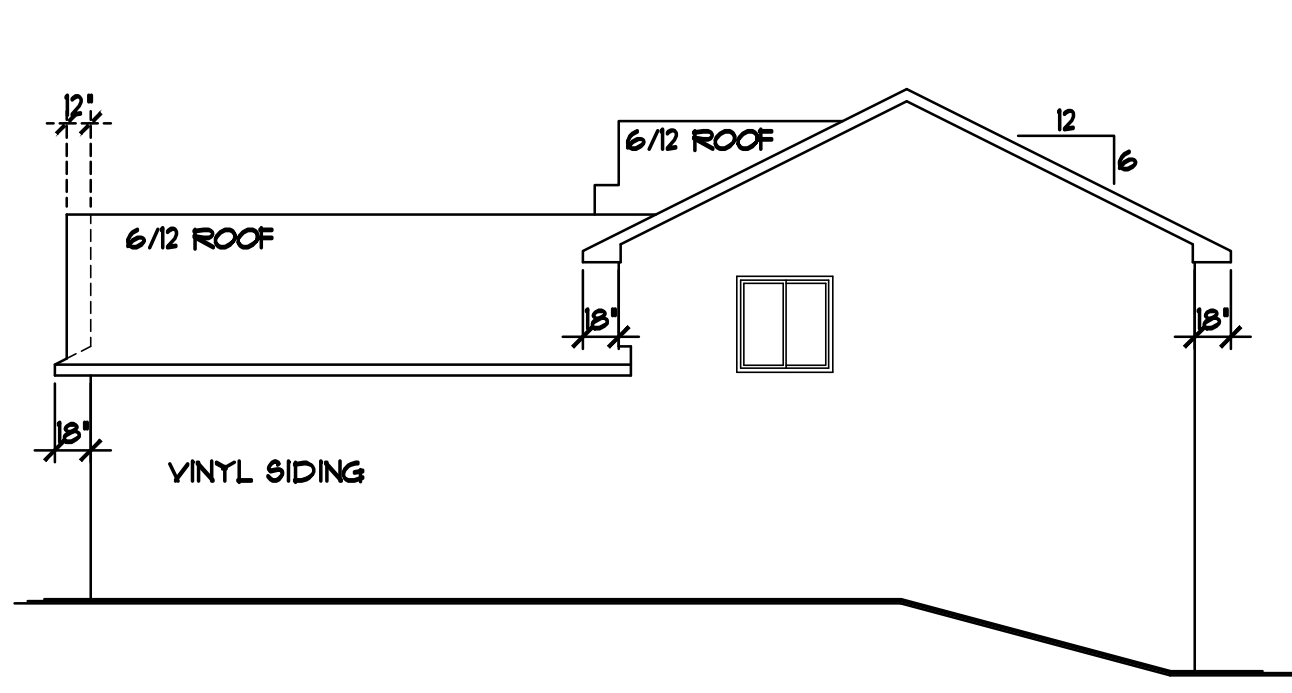
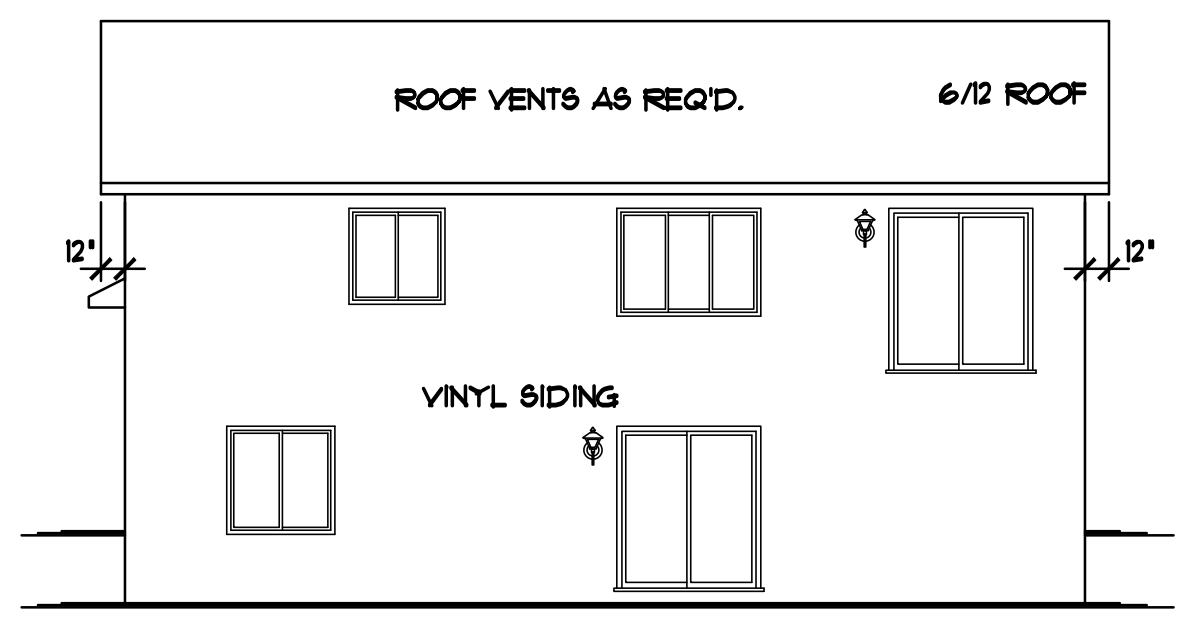


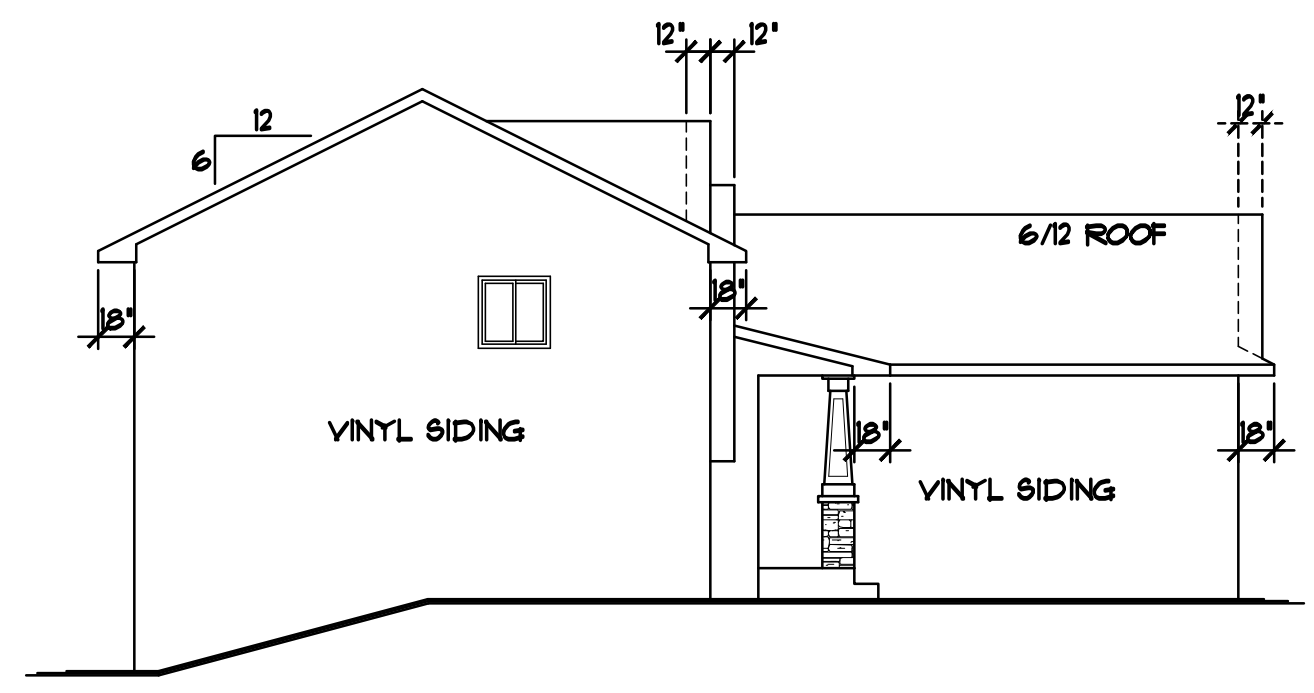
REVISIONS	BY
12158	N.F.
12184	N.F.
13022	N.F.
13212	N.F.
16061	N.F.



RIGHT ELEVATION 1/8"=1'-0"



REAR ELEVATION 1/8"=1'-0"



LEFT ELEVATION 1/8"=1'-0"

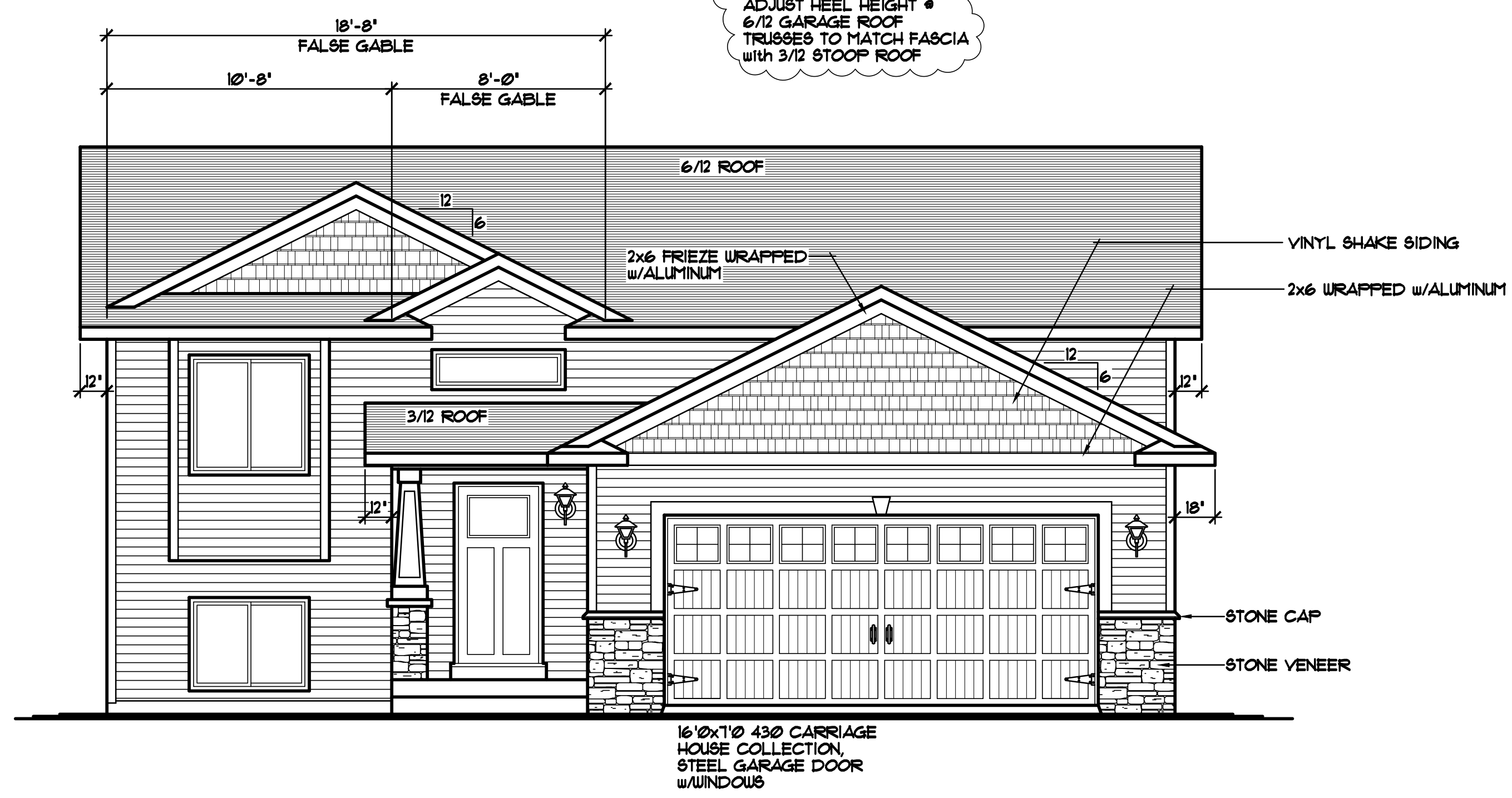
SPECIAL NOTICE:
CROIX DESIGN AND DRAFTING, INC. ACCEPTS NO RESPONSIBILITY FOR ERRORS AND/OR OMISSIONS. THESE DRAWINGS ARE DESIGN CONCEPT ONLY. EVERY EFFORT HAS BEEN MADE TO DESIGN ACCURATELY. THE OWNER, GENERAL CONTRACTOR, SUB-CONTRACTORS, AND SUPPLIERS MUST CHECK ALL DETAILS AND DIMENSIONS AND BE RESPONSIBLE FOR ANY CHANGES OR ADJUSTMENTS REQUIRED DURING ACTUAL CONSTRUCTION. NO REPRESENTATION IS MADE OR IMPLIED FOR ACCURACY.

COPYRIGHT NOTICE: ALL RIGHTS RESERVED. THESE ARCHITECTURAL PLANS AND ALL RELATED WORKS ARE PROTECTED BY UNITED STATES COPYRIGHT LAWS, AND MAY NOT BE REPRODUCED OR TRANSMITTED IN ANY FORM OR BY ANY MEANS, WITH OR WITHOUT THE EXPRESS WRITTEN PERMISSION OF CROIX DESIGN AND DRAFTING, INC. CROIX DESIGN AND DRAFTING, INC.

NOTE III
PROVIDE STANDARD ENERGY HEEL @ MAIN LEVEL ROOF TRUSSES (TYP.)

NOTE III
ADJUST HEEL HEIGHT @ 6/12 GARAGE ROOF TRUSSES TO MATCH FASCIA WITH 3/12 STOOP ROOF

- VECTOR WINDOW SIZES SPEC'D.
- VINYL SIDING/CORNER TRIM
- ALUMINUM SOFFITS & FASCIA
- STONE VENEER WHERE SHOWN



FRONT ELEVATION 1/4"=1'-0"
389 SQ. FT. MAIN LEVELS

THE:
ST. FRANCIS MODEL
3386 235th LANE NW
LOT 4, BLOCK 5, RUM RIVER BLUFFS
ST. FRANCIS, MN

© COPYRIGHT 2009-2011 NOTICE, ALL RIGHTS RESERVED
CROIX DESIGN and DRAFTING, INC.

DESIGN and DRAFTING BY:

ARCHITECTURAL DESIGN and DRAFTING SERVICE • HOME PLAN SERVICE • CUSTOM HOMES • REMODELING • PHONE: 763.757.5997 • ANDOVER, MINNESOTA • WWW.CROIXDESIGN.COM

BUILT BY:

163-154-5518
LIC. #0003649

DRAIN	N.F.
CHECKED	XX
DATE:	4/04/2011
SCALE:	AS NOTED
CADD FILE #	11120
SHEET	1 of 5

REVISIONS
XXXXXX 0000 BY:XX
XXXXXX 0000 BY:XX

SPECIAL NOTICE:
CROIX DESIGN AND DRAFTING, INC. ACCEPTS NO RESPONSIBILITY FOR ERRORS AND/OR OMISSIONS. THESE DRAWINGS ARE DESIGN CONCEPT ONLY. EVERY EFFORT HAS BEEN MADE TO PREPARE THESE DRAWINGS ACCURATELY. HOWEVER, THE USER SHALL BE RESPONSIBLE FOR VERIFYING ALL DIMENSIONS AND BEING RESPONSIBLE FOR ANY CHANGES OR ADJUSTMENTS REQUIRED DURING ACTUAL CONSTRUCTION. NO REPRESENTATION IS MADE OR IMPLIED FOR ACCURACY.

OFFICE: 763.757.5997
FAX: 763.757.4383
ANDOVER, MINNESOTA
WWW.CROIXDESIGN.COM



BUILT BY:
SEMLER HOMES

SHEET
2
OF 5
CADD FILE #
11120

MECH. NOTES!!!
FURNACE: CARRIER MODEL 58MCB060-112
60,000 BTU, 93 % EFFICIENT
A/C: CARRIER MODEL ACA324-003
2 TON, 13 SEER
ENERGY RECOVERY VENTILATOR:
RENEWAIRE MODEL EV130, 150 CFM
WATER HEATER: AO SMITH MODEL ECT-52
52 GALLON, ELECTRIC

NOTE!!!
VERIFY ALL MECHANICAL
EQUIPMENT LOCATIONS.
LOCATIONS ON PLAN ARE
REPRESENTATION ONLY

NOTE!!!
PROVIDE 2" R10 FOAM BOARD
INSULATION @ EXTERIOR CONC.
FOUNDATION HOUSE WALLS & 1"
R7 FOAM BOARD INSULATION
@ INTERIOR CONC. FOUNDATION
HOUSE WALLS (TYP.)

NOTE!!!
ALL FOOTINGS SHALL HAVE
A COMPRESSIVE STRENGTH OF
2500 PSI WITH APPROVED ADMIXTURE
THAT PROVIDES WATER AND VAPOR
RESISTANCE EQUAL TO 5000 PSI (MIN.)

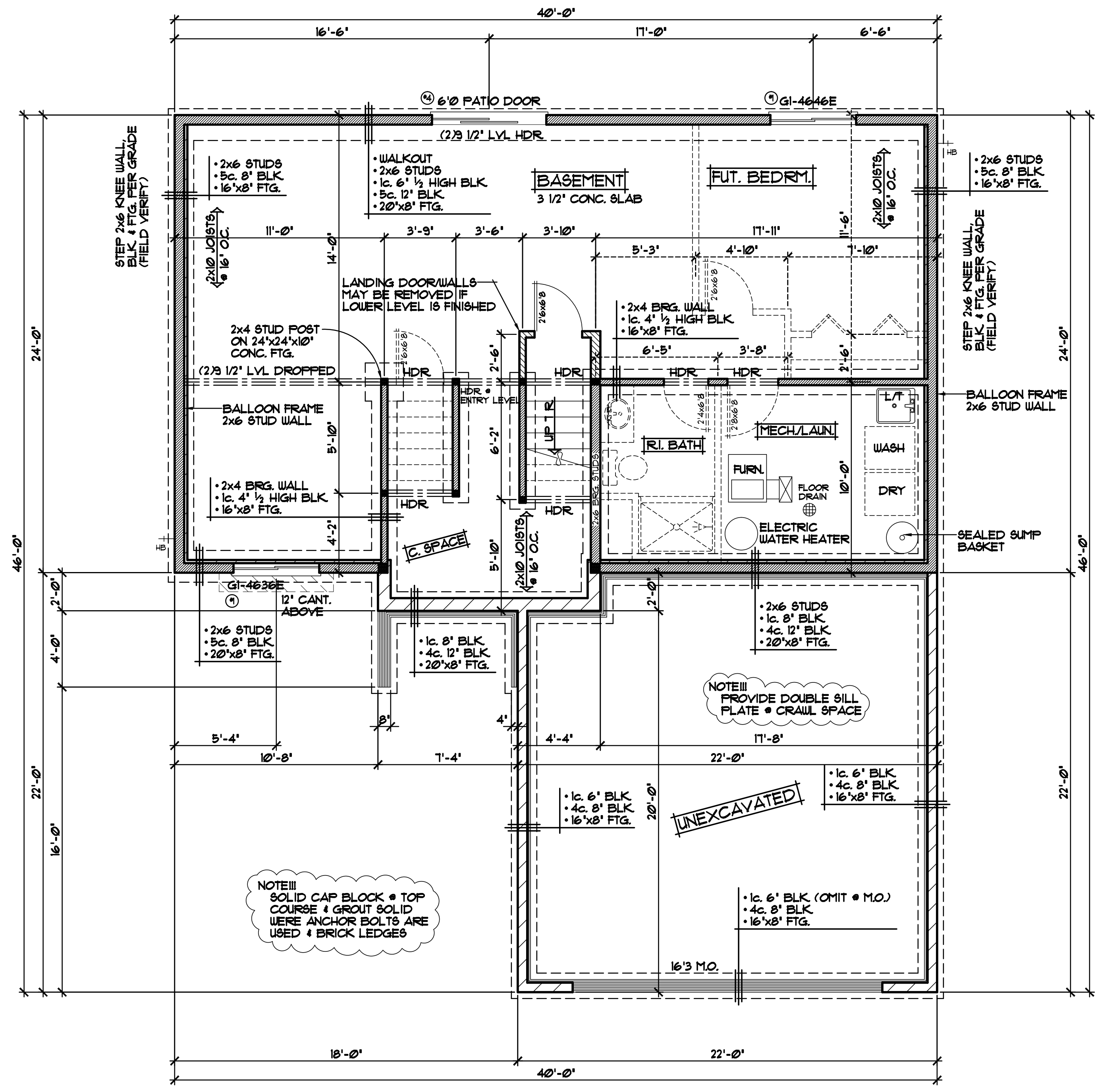
NOTE!!!
SOLID CAP BLOCK @ TOP
COURSE & GROUT SOLID
WERE ANCHOR BOLTS ARE
USED & BRICK LEDGES

NOTE!!!
PROVIDE DOUBLE SILL
PLATE @ CRAWL SPACE

NOTE!!!
ALL WDW/DOOR OPENINGS
TO HAVE (2.2x10" @ GRADE
HDR or BETTER (W.N.O.)

NOTE!!!
VECTOR WINDOW SIZES SPEC'D.
VERIFY ALL DOOR AND WINDOW
ROUGH OPENINGS WITH SUPPLIER

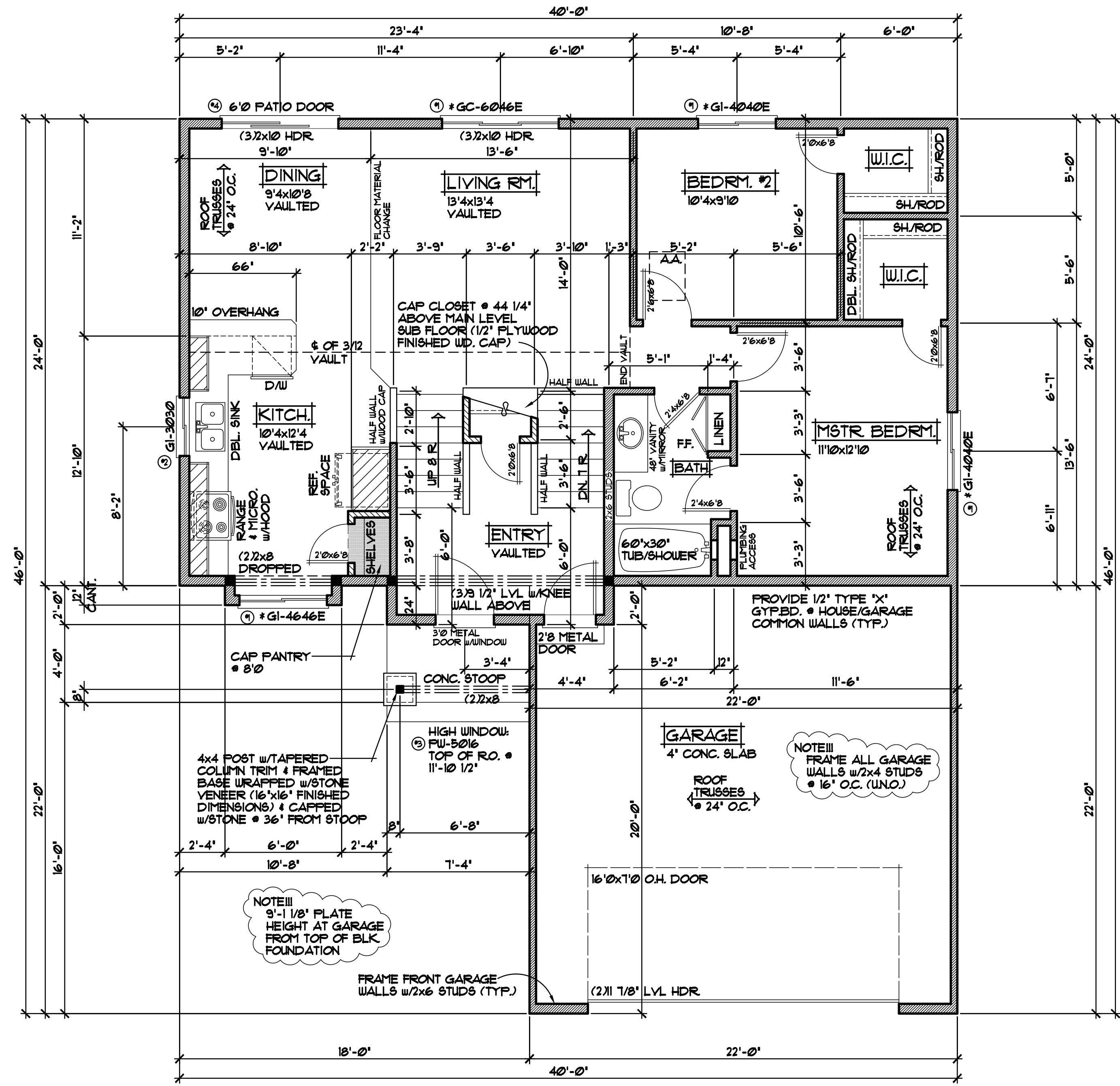
ALL HEIGHT CALCULATIONS FOR
FOUNDATIONS ARE BASED ON THE
USE OF FULL 8" HIGH BLOCK WITH
3/8" JOINTS. IF MODULAR BLOCK
IS USED, CONTRACTORS SHOULD
ADJUST HEIGHTS ACCORDINGLY



LOWER LEVEL PLAN 1/4"=1'-0"

WINDOW and DOOR PERFORMANCE DATA
U-VALUE / SHGC

- ① SLIDER UNIT
U-VALUE = 0.30
SHGC = 0.33
- ② CASEMENT UNIT
U-VALUE = 0.29
SHGC = 0.30
- ③ FIXED/PICTURE UNIT
U-VALUE = 0.28
SHGC = 0.31
- ④ SLIDING PATIO DOOR
U-VALUE = 0.28
SHGC = 0.34



MAIN LEVEL FLOOR PLAN 1/4" = 1'-0"
999 SQ. FT.

NOTE III
ALL WD/W/DOOR OPENINGS
TO HAVE (2)2x10 1/2 GRADE
HDR OR BETTER (UNO.)

NOTE III
VECTOR WINDOW SIZES SPEC'D.
VERIFY ALL DOOR AND WINDOW
ROUGH OPENINGS WITH SUPPLIER

REVISIONS
XXXXXX 0000 BY:XX
XXXXXX 0000 BY:XX

SPECIAL NOTICE:
CROIX DESIGN AND DRAFTING, INC. ACCEPTS NO RESPONSIBILITY FOR ERRORS AND/OR OMISSIONS. THESE DRAWINGS ARE DESIGN CONCEPT ONLY. EVERY EFFORT HAS BEEN MADE TO PREVENT ERRORS, BUT THE USER MUST VERIFY ALL DIMENSIONS AND CONDITIONS. THE USER SHALL BE RESPONSIBLE FOR ANY CHANGES OR ADJUSTMENTS REQUIRED DURING CONSTRUCTION. NO REPRESENTATION IS MADE OR IMPLIED FOR ACCURACY.

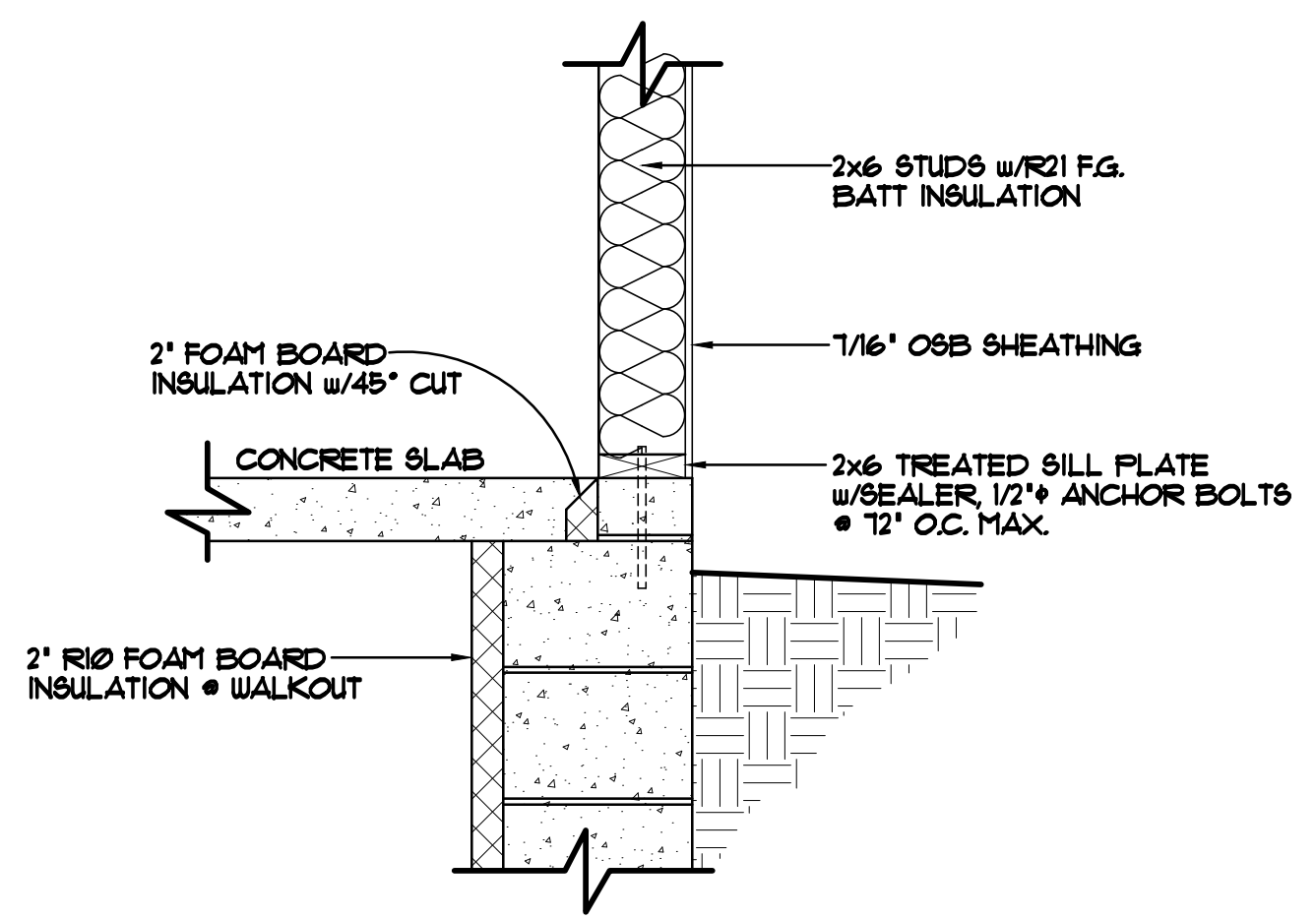
OFFICE: 763.757.5997
FAX: 763.757.4383
ANDOVER, MINNESOTA
WWW.CROIXDESIGN.COM



BUILT BY:
SEMLER HOMES

SHEET
3
OF 5
CADD FILE #
11120

REVISIONS
XXXXXX 0000 BY:XX
XXXXXX 0000 BY:XX



WALKOUT FOUNDATION DETAIL 1/4"=1'-0"

- ROOF CONSTRUCTION:**
- PRE-MANUFACTURED ROOF TRUSSES ENGINEERED BY SUPPLIER
 - 1/150 ROOF VENTS AT SOFFITS, 1/150 VENT AT RIDGE
 - AIR CHUTE AT EACH TRUSS SPACE
 - 7/16" OSB ROOF SHEATHING
 - 15# ROOFING FELT
 - ICE & WATER MEMBRANE APPLIED 24" BEYOND EXTERIOR WALL
 - 30 YEAR ARCHITECTURAL SHINGLES

- SOFFIT / FASCIA:**
- 2x6 SUB FASCIA
 - ALUMINUM FASCIA COVER
 - ALUMINUM VENTED SOFFIT

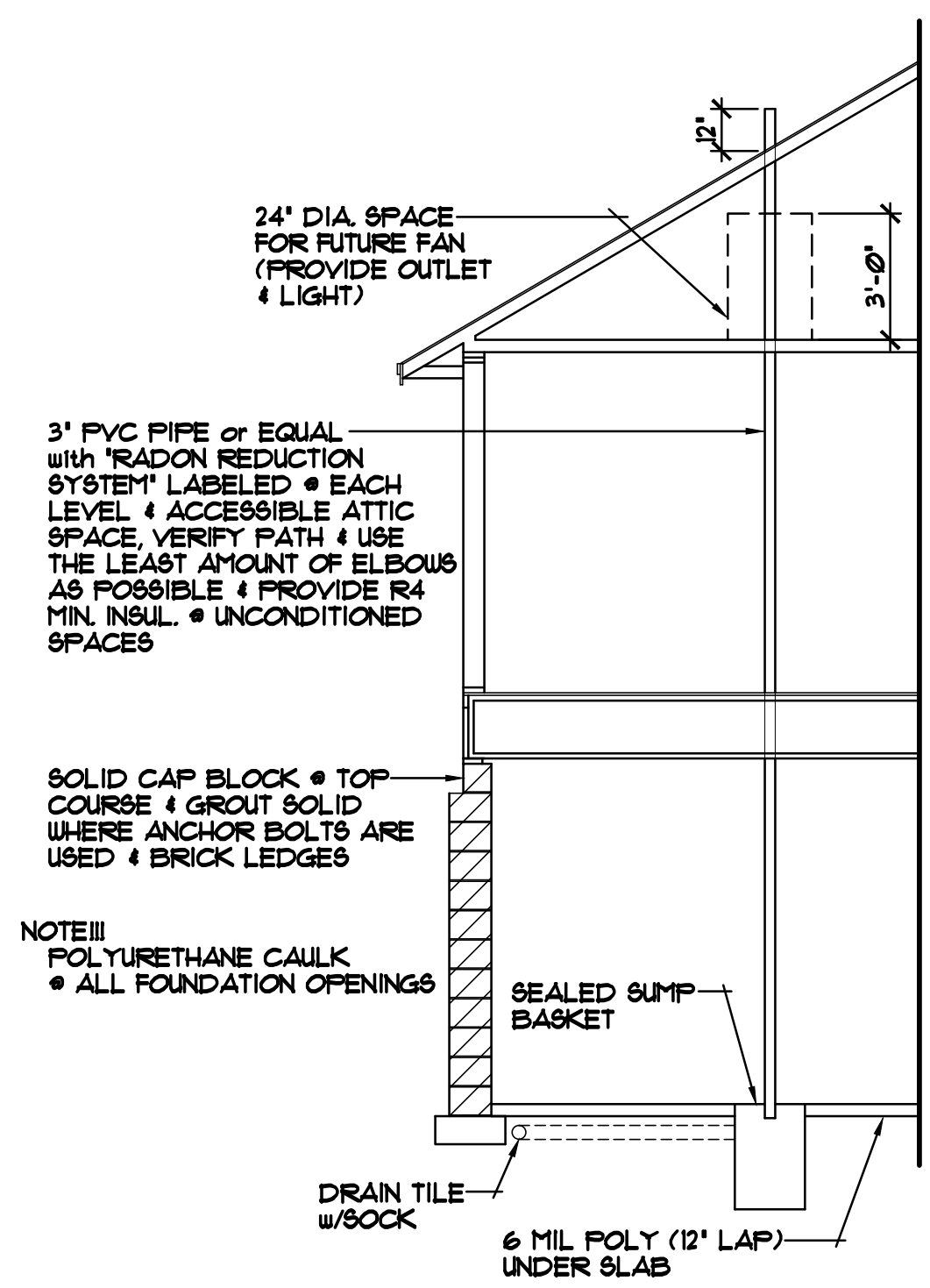
- WALL CONSTRUCTION:**
- TYVEK HOUSE WRAP
 - 7/16" OSB SHEATHING
 - 2x6 STUDS @ 16" O.C.
 - R21 F.G. BATT INSULATION
 - 4 MIL POLY VAPOR BARRIER
 - 1/2" GYPSUM BOARD AT INTERIOR

- RIM AREA CONSTRUCTION:**
- SEE DETAILS (SHEET #5)

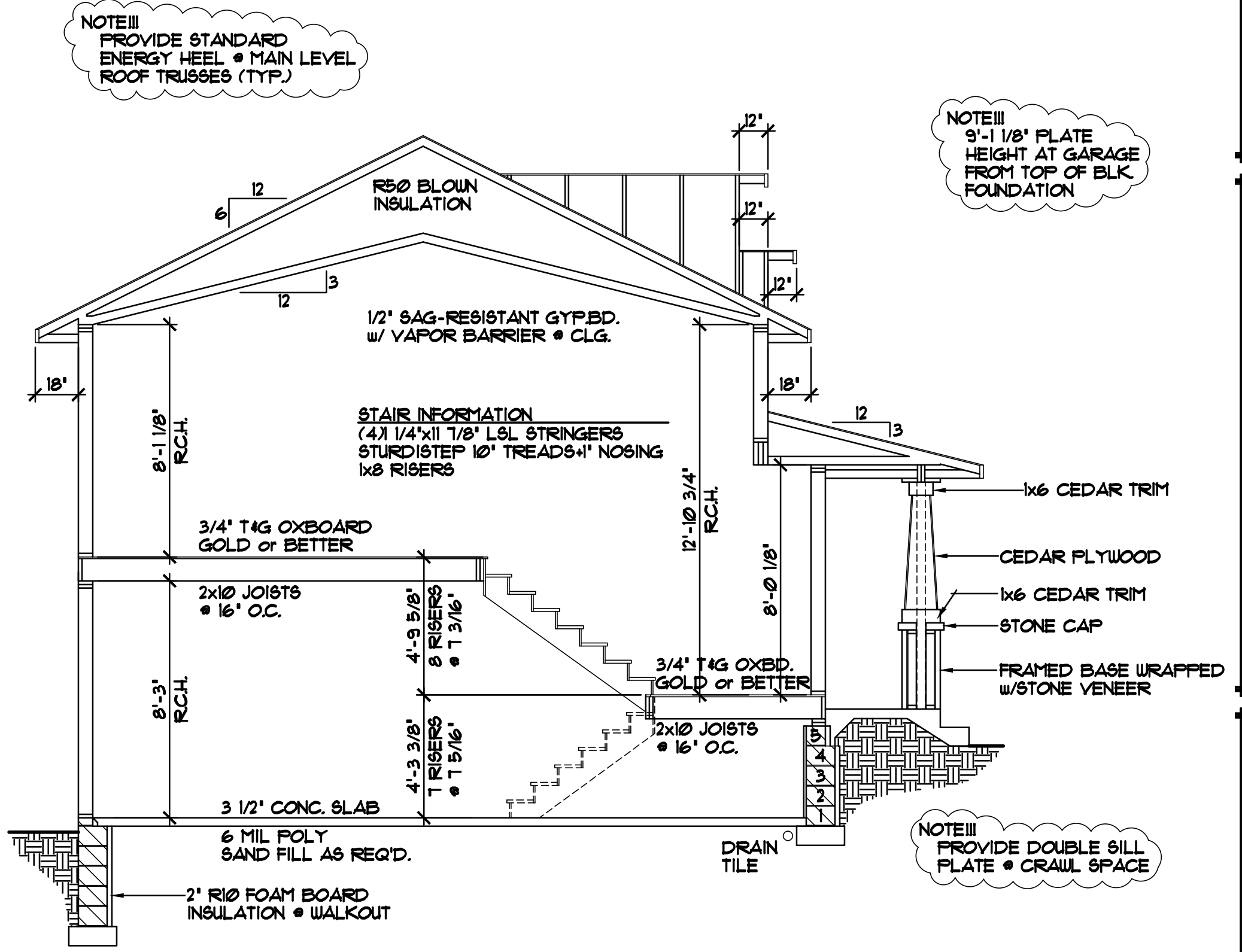
- WALL CONSTRUCTION:**
- SIMILAR TO ABOVE

- SILL CONSTRUCTION:**
- 2x6 TREATED SILL PLATE w/SEALER
 - 1/2" ANCHOR BOLTS @ 12" O.C.

- FOUNDATION CONSTRUCTION:**
- CONCRETE BLOCK WALL FOUNDATION (SEE FOUNDATION FOR COURSING)
 - INSTALL RT RIGID FOAM BOARD INSUL. TO INTERIOR OF FOUNDATION WALLS
 - INSTALL R10 RIGID FOAM BOARD INSUL. TO EXTERIOR OF FOUNDATION WALLS
 - WATERPROOFING



PASSIVE RADON MITIGATION SYSTEM



CROSS SECTION 1/4"=1'-0"

NOTE!!! PROVIDE STANDARD ENERGY HEEL @ MAIN LEVEL ROOF TRUSSES (TYP.)

NOTE!!! 9'-1 1/8" PLATE HEIGHT AT GARAGE FROM TOP OF BLK. FOUNDATION

NOTE!!! PROVIDE DOUBLE SILL PLATE @ CRAWL SPACE

ALL HEIGHT CALCULATIONS FOR FOUNDATIONS ARE BASED ON THE USE OF FULL 8" HIGH BLOCK WITH 3/8" JOINTS. IF MODULAR BLOCK IS USED, CONTRACTORS SHOULD ADJUST HEIGHTS ACCORDINGLY

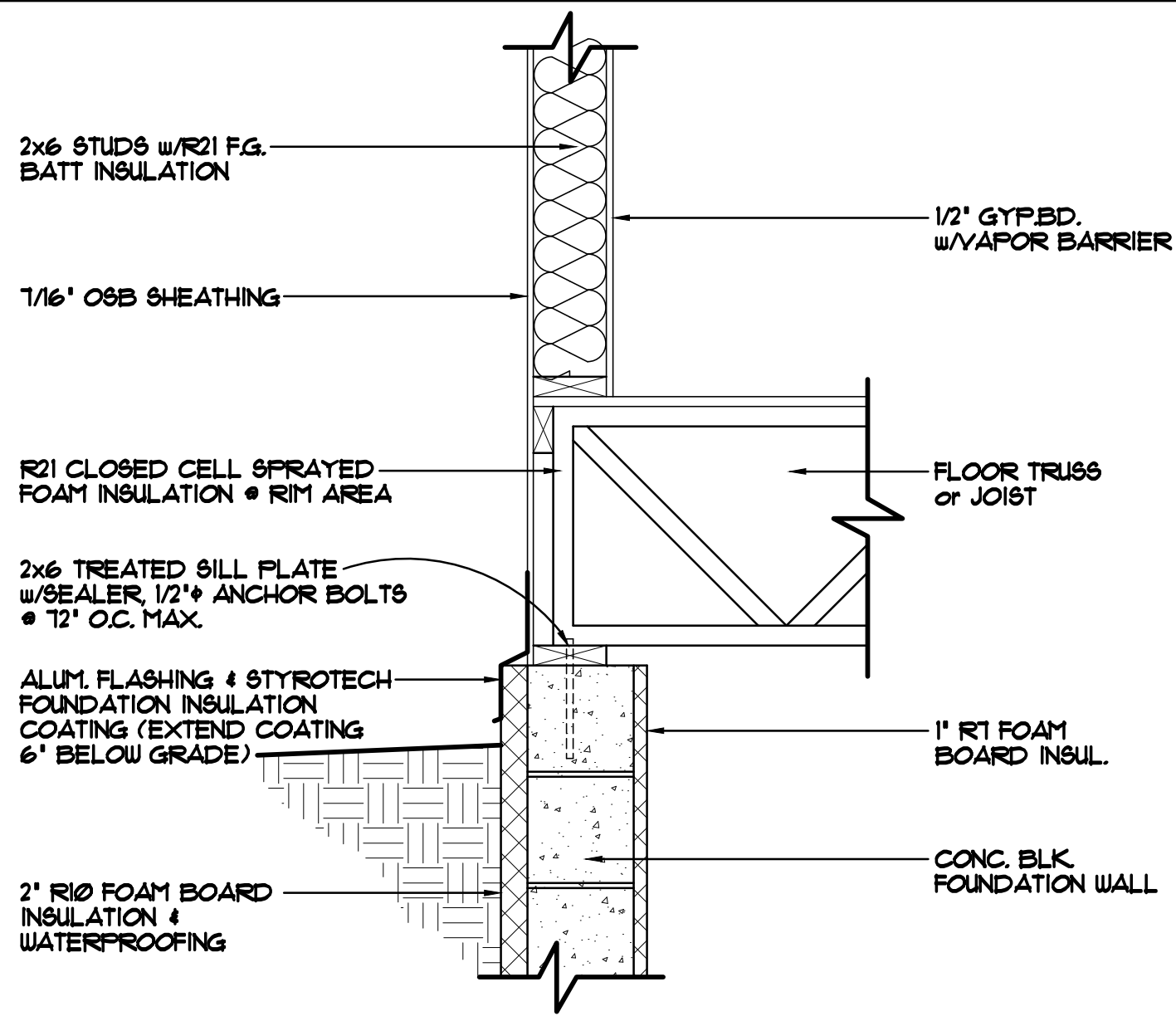
SPECIAL NOTICE:
CROIX DESIGN AND DRAFTING, INC. ACCEPTS NO RESPONSIBILITY FOR ERRORS AND/OR OMISSIONS. THESE DRAWINGS ARE DESIGN CONCEPT ONLY. EVERY EFFORT HAS BEEN MADE TO PREVENT ERRORS, BUT THE USER MUST VERIFY ALL DIMENSIONS, MATERIALS, AND CONDITIONS BEFORE CONSTRUCTION. THE USER IS RESPONSIBLE FOR ANY CHANGES OR ADJUSTMENTS REQUIRED DURING CONSTRUCTION. NO REPRESENTATION IS MADE OR IMPLIED FOR ACCURACY.

OFFICE: 763.757.5997
FAX: 763.757.4383
ANDOVER, MINNESOTA
WWW.CROIXDESIGN.COM



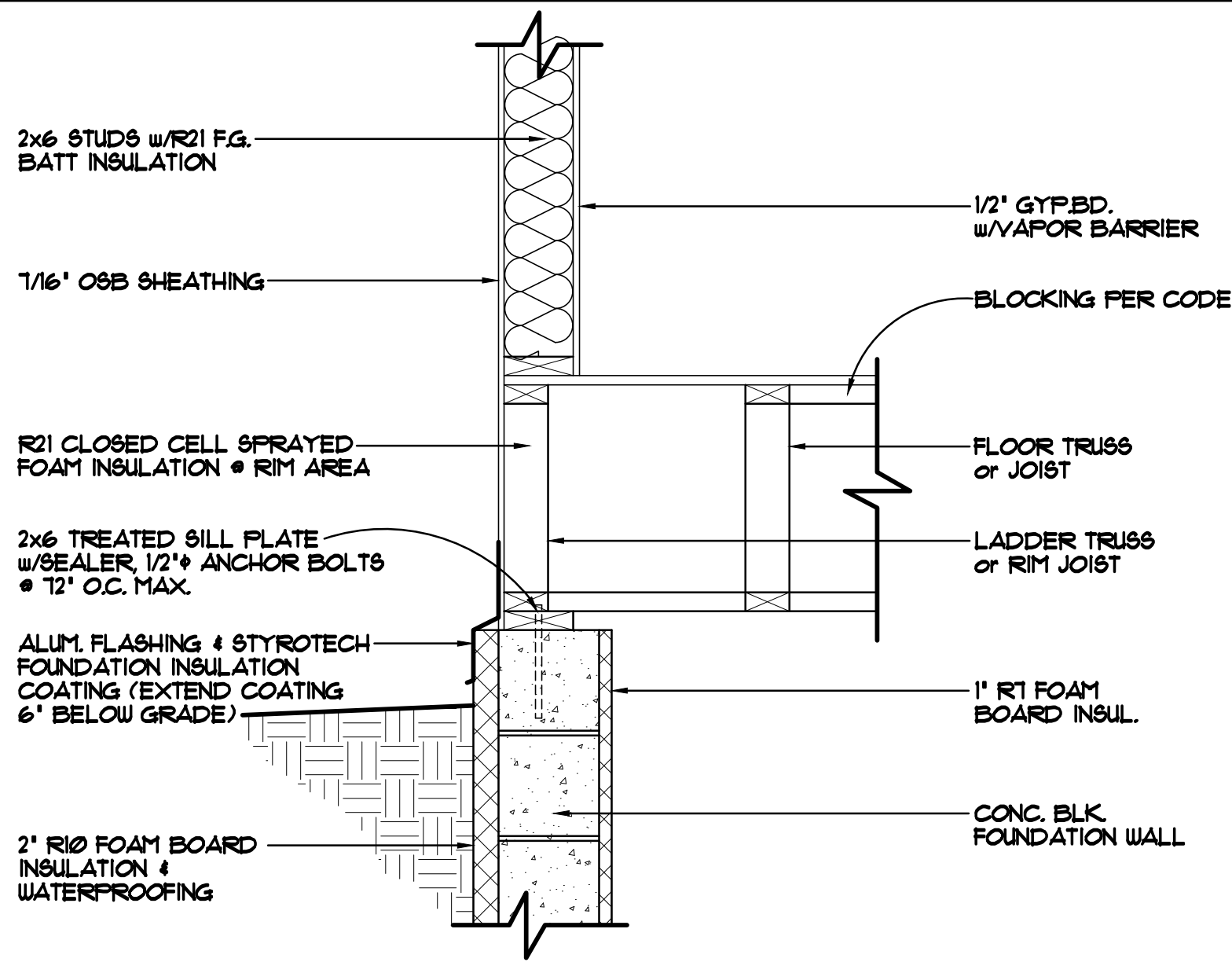
BUILT BY:
SEMLER HOMES

SHEET
4
of 5
CADD FILE #
11120



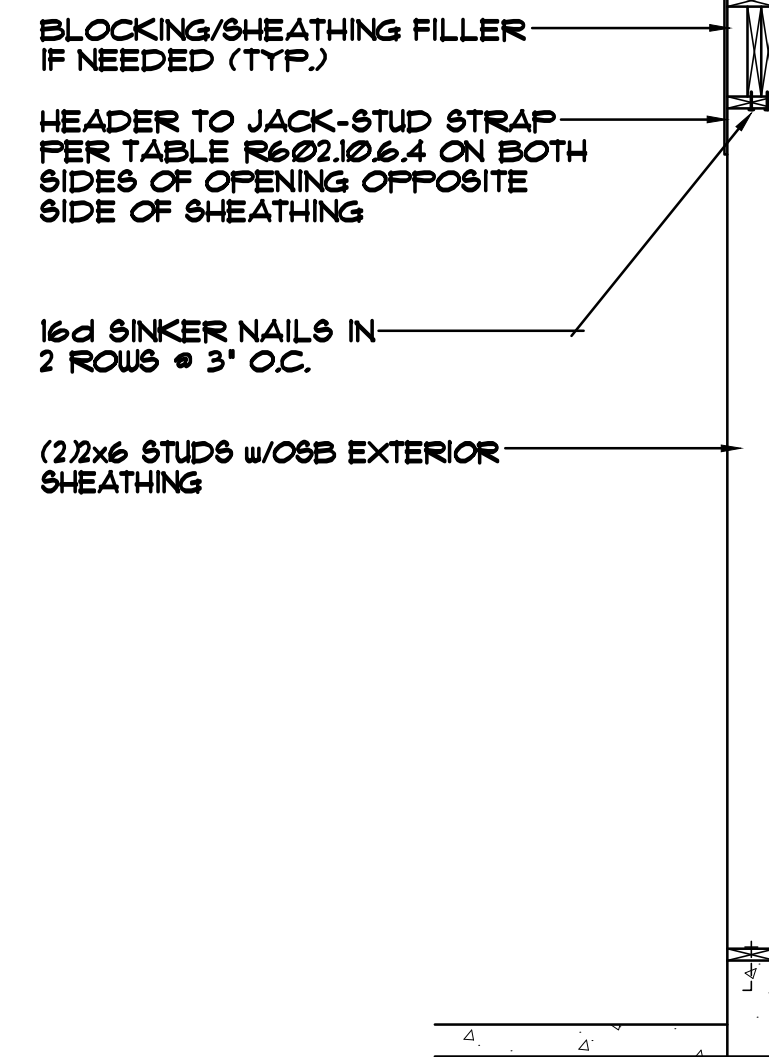
FOUNDATION/RIM AREA DETAIL 1"=1'-0"

STANDARD RIM AREA, TRUSSES/JOISTS PERPENDICULAR TO FOUNDATION WALL

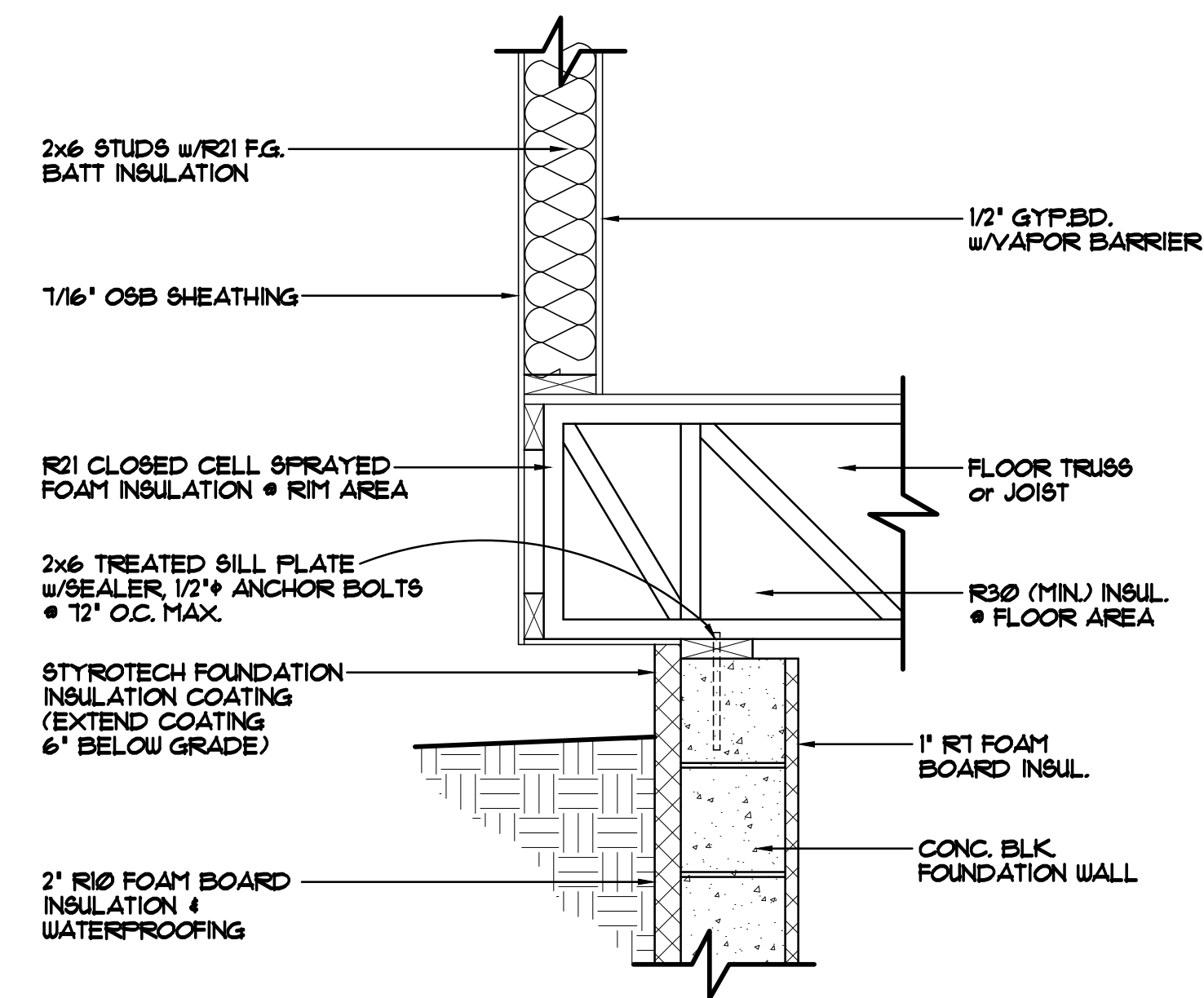


FOUNDATION/RIM AREA DETAIL 1"=1'-0"

STANDARD RIM AREA, TRUSSES/JOISTS PARALLEL TO FOUNDATION WALL

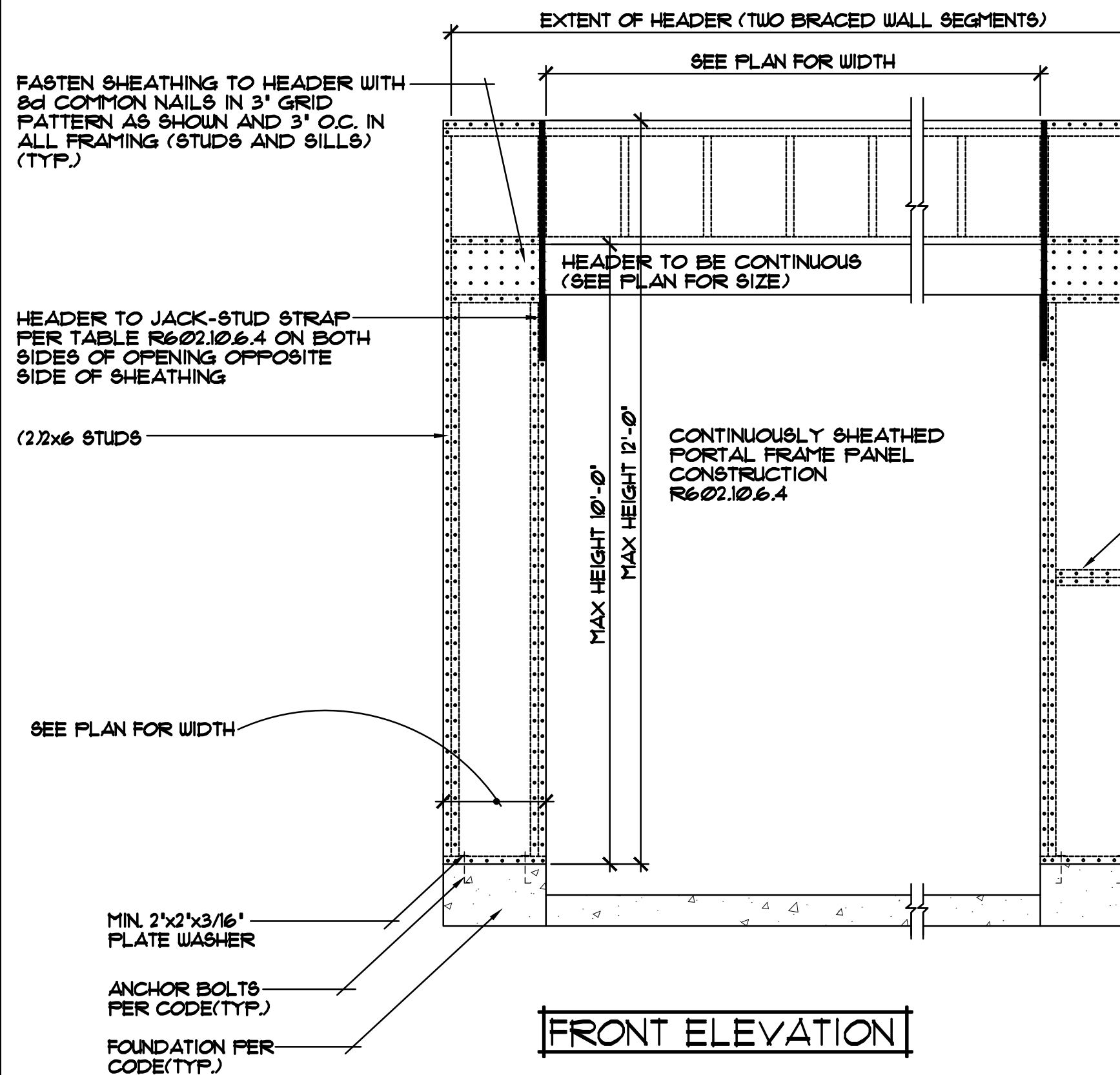


SIDE ELEVATION



FOUNDATION/RIM AREA DETAIL 1"=1'-0"

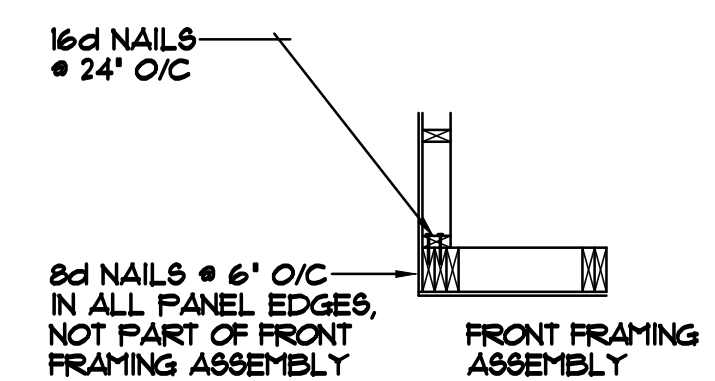
CANTILEVERED TRUSSES/JOISTS



FRONT ELEVATION

CONTINUOUSLY SHEATHED PORTAL FRAME PANEL CONSTRUCTION 1/2"=1'-0"

CORNER FRAMING DETAIL



REVISIONS
XX/XX/XX 0000 BY:XX
XX/XX/XX 0000 BY:XX

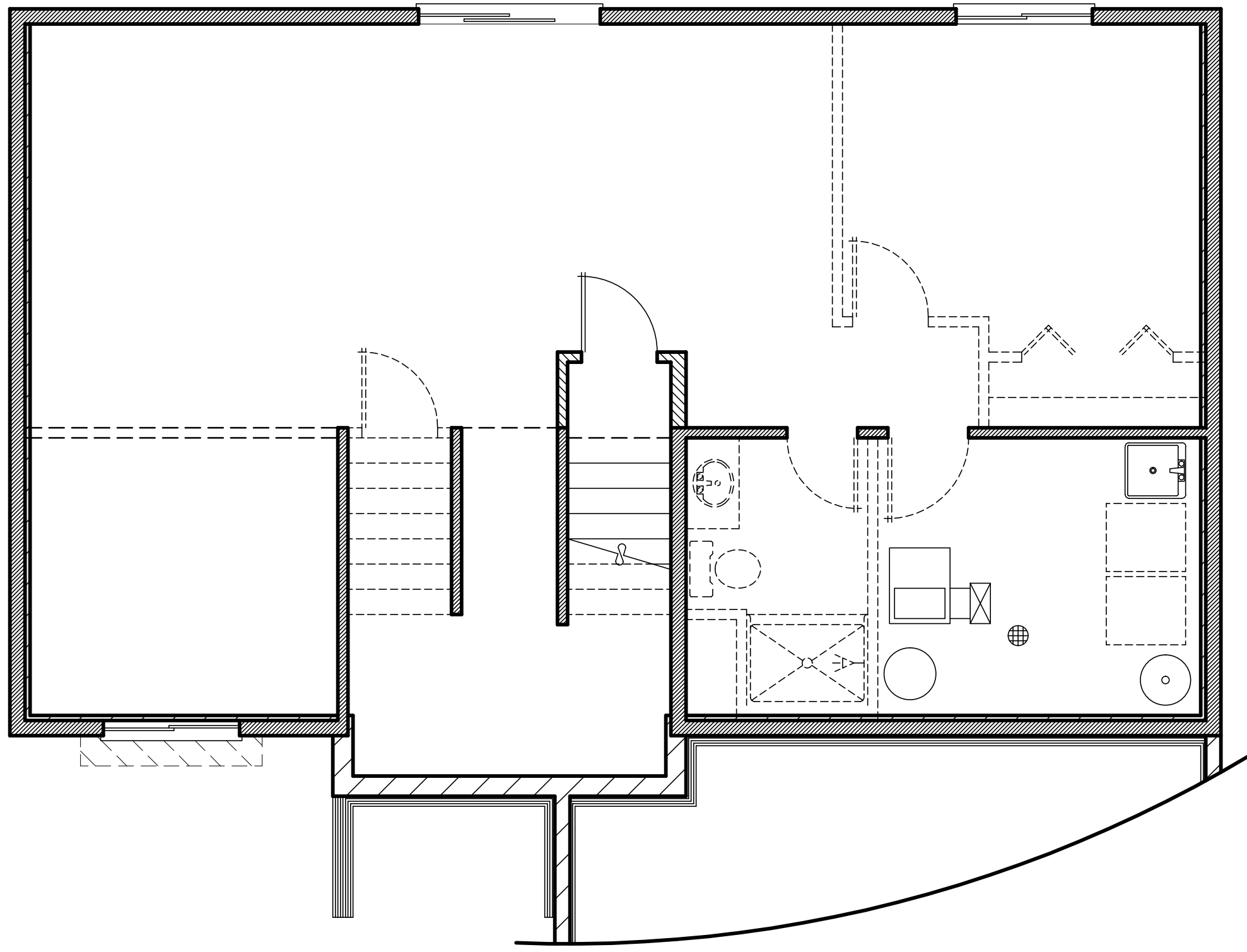
SPECIAL NOTICE: CROIX DESIGN AND DRAFTING, INC. ACCEPTS NO RESPONSIBILITY FOR ERRORS AND/OR OMISSIONS. THESE DRAWINGS ARE DESIGN CONCEPT ONLY. EVERY EFFORT HAS BEEN MADE TO PREVENT ERRORS, BUT THE USER MUST VERIFY ALL DIMENSIONS AND CONDITIONS BEFORE CONSTRUCTION. THE USER SHALL BE RESPONSIBLE FOR ANY CHANGES OR ADJUSTMENTS REQUIRED DURING ACTUAL CONSTRUCTION. NO REPRESENTATION IS MADE OR IMPLIED FOR ACCURACY.

OFFICE: 763.757.5997
 FAX: 763.757.4383
 ANDOVER, MINNESOTA
 WWW.CROIXDESIGN.COM

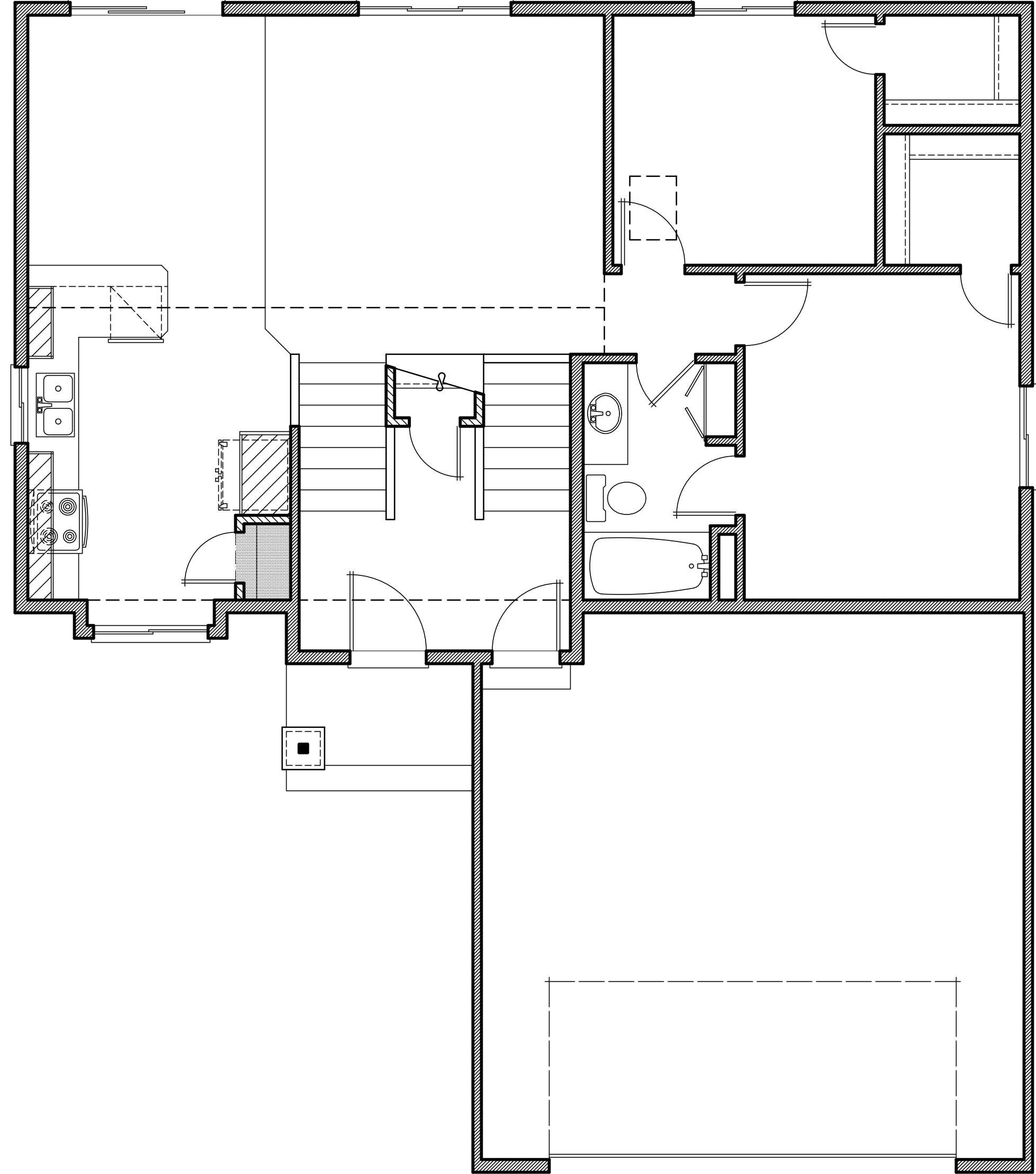


BUILT BY:
SEMLER HOMES

SHEET
5
 of 5
 CADD FILE #
 11120



LOWER LEVEL ELECTRICAL PLAN 1/4"=1'-0"



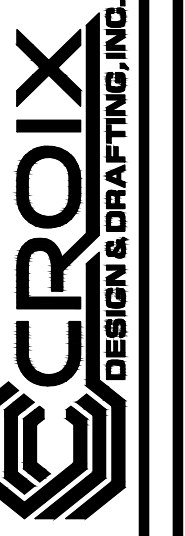
MAIN LEVEL ELECTRICAL PLAN 1/4"=1'-0"

REVISIONS

XXXXXX
0000
BY:XX
XXXXXX
0000
BY:XX

SPECIAL NOTICE:
CROIX DESIGN AND DRAFTING, INC. ACCEPTS NO RESPONSIBILITY FOR ERRORS AND/OR OMISSIONS. THESE DRAWINGS ARE DESIGN CONCEPT ONLY. EVERY EFFORT HAS BEEN MADE TO PREVENT ERRORS, BUT THE USER MUST VERIFY ALL DIMENSIONS, MATERIALS, AND CONDITIONS BEFORE CONSTRUCTION. THE USER SHALL BE RESPONSIBLE FOR ANY CHANGES OR ADJUSTMENTS REQUIRED DURING ACTUAL CONSTRUCTION. NO REPRESENTATION IS MADE OR IMPLIED FOR ACCURACY.

OFFICE: 763.757.5997
FAX: 763.757.4383
ANDOVER, MINNESOTA
WWW.CROIXDESIGN.COM



BUILT BY:
SEMLER HOMES

SHEET
X
of X

CADD FILE #
11120