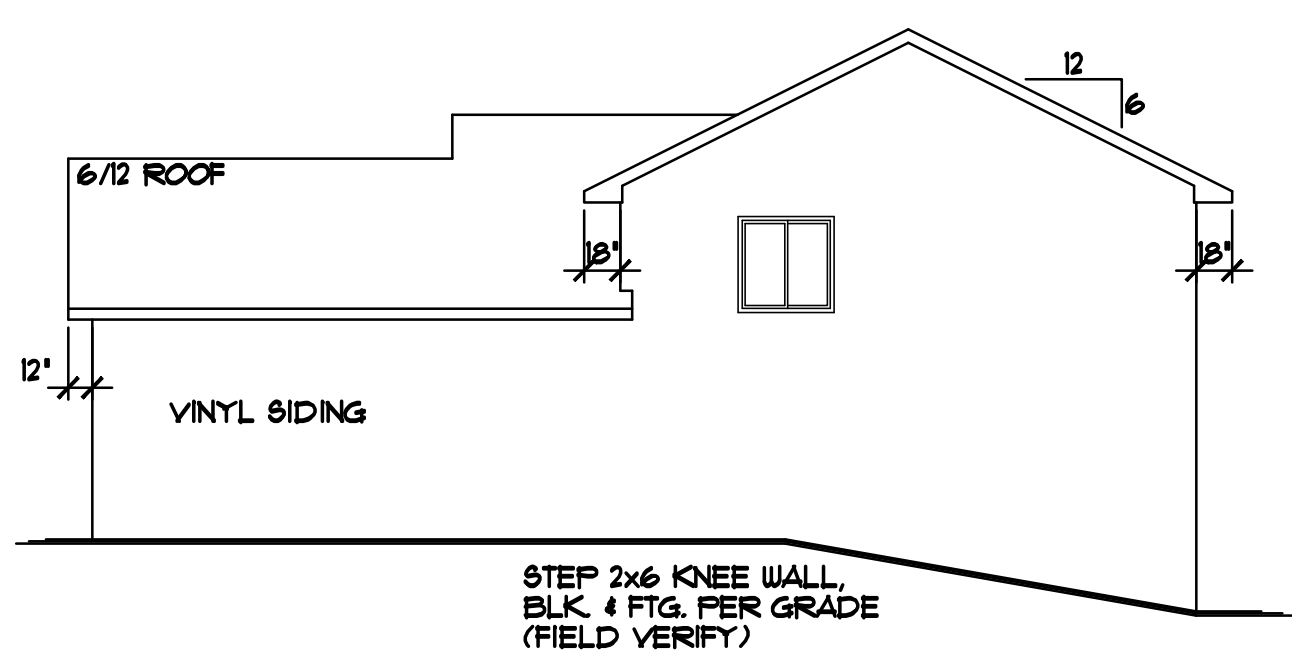
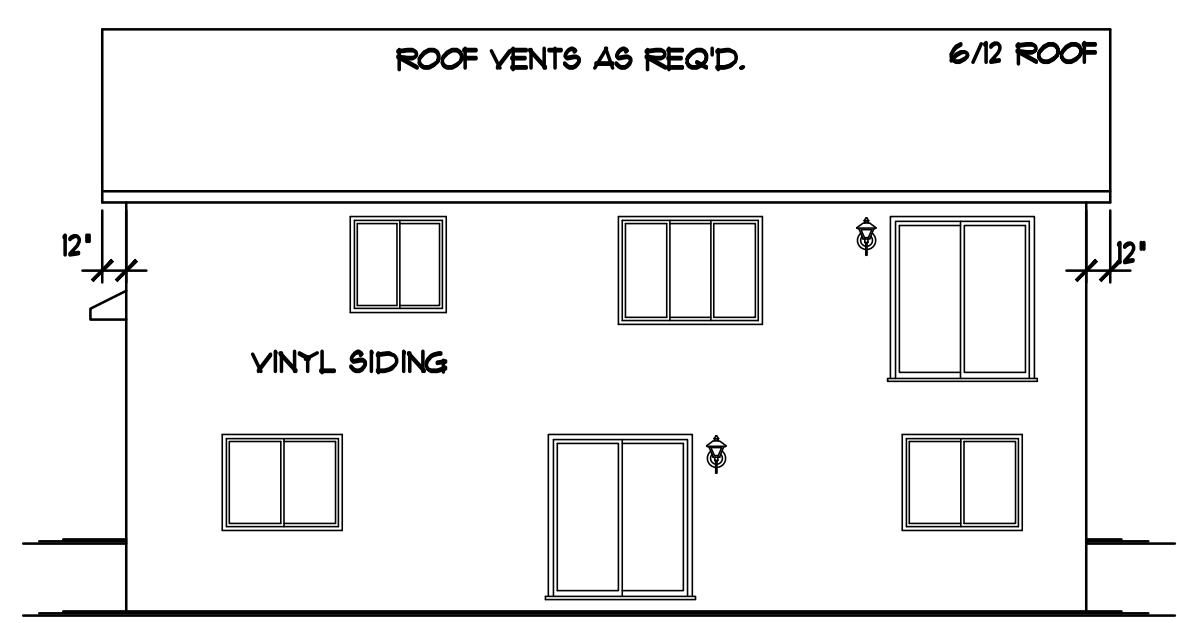


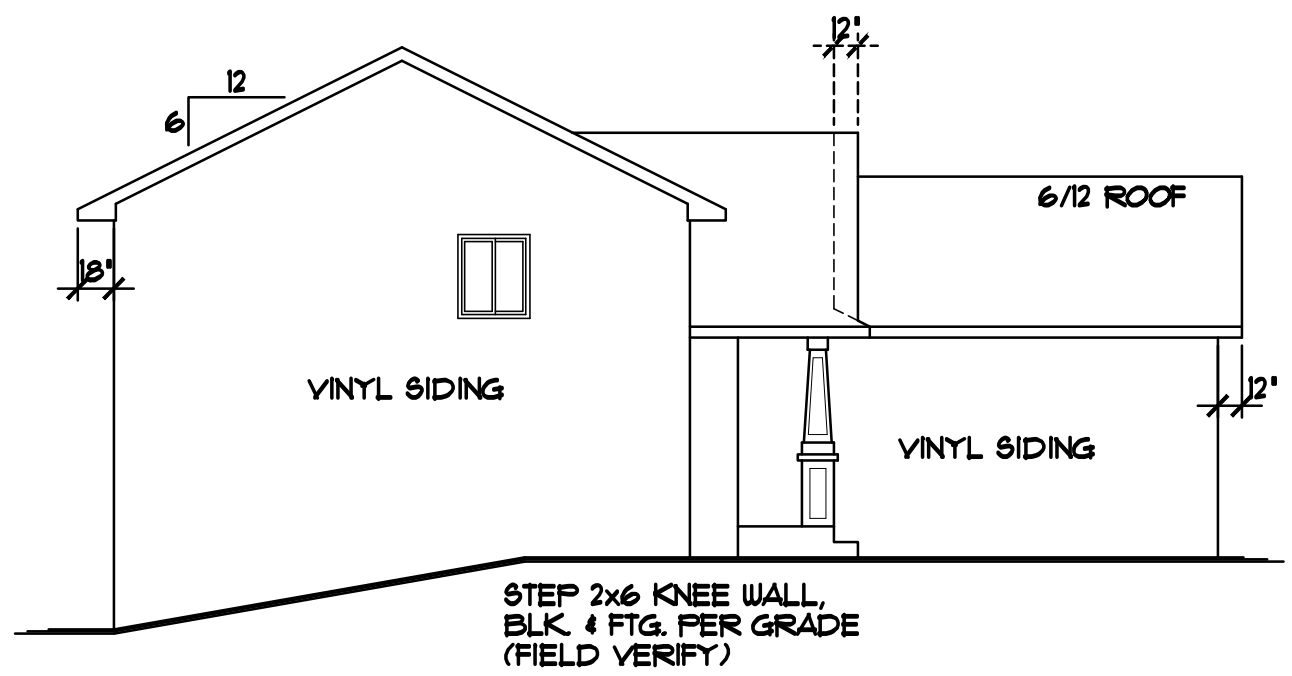
REVISIONS	BY
13022	N.F.
15288	N.F.
16020	N.F.
16098	N.F.
16453	N.F.



RIGHT ELEVATION 1/8"=1'-0"



REAR ELEVATION 1/8"=1'-0"



LEFT ELEVATION 1/8"=1'-0"

STEP 2x6 KNEE WALL,
BLK. & FTG. PER GRADE
(FIELD VERIFY)

STEP 2x6 KNEE WALL,
BLK. & FTG. PER GRADE
(FIELD VERIFY)

NOTE III
PROVIDE STANDARD
ENERGY HEEL @ MAIN LEVEL
ROOF TRUSSES (TYP.)

- VECTOR WINDOW SIZES SPEC'D.
- VINYL SIDING/CORNER TRIM
- ALUMINUM SOFFITS & FASCIA
- STONE VENEER WHERE SHOWN
- WINDOW GRIDS AS SHOWN



NOTE III
8'-1 1/8" PLATE
HEIGHT @ ENTIRE
MAIN LEVEL (TYP.)

FRONT ELEVATION 1/4"=1'-0"
983 SQ. FT.

SPECIAL NOTICE:
CROIX DESIGN AND DRAFTING, INC. ACCEPTS NO RESPONSIBILITY FOR ERRORS AND/OR OMISSIONS. THESE DRAWINGS ARE DESIGN CONCEPT ONLY. EVERY EFFORT HAS BEEN MADE TO DESIGN ACCURATELY, BUT THE USER SHALL BE RESPONSIBLE FOR VERIFYING ALL DIMENSIONS AND CONDITIONS WITH THE CONTRACTOR. SUB-CRACKS, AND SUPPLIERS MUST CHECK ALL DETAILS AND DIMENSIONS AND BE RESPONSIBLE FOR ANY CHANGES OR ADJUSTMENTS REQUIRED DURING ACTUAL CONSTRUCTION. NO REPRESENTATION IS MADE OR IMPLIED FOR ACCURACY.

COPYRIGHT NOTICE: ALL RIGHTS RESERVED
THESE ARCHITECTURAL PLANS AND ALL RELATED WORKS ARE PROTECTED BY UNITED STATES COPYRIGHT LAWS, AND THAT NOT BE REPRODUCED, COPIED, OR TRANSMITTED IN ANY MANNER WITHOUT THE EXPRESS WRITTEN PERMISSION OF CROIX DESIGN AND DRAFTING, INC. CROIX DESIGN AND DRAFTING, INC.

DESIGN AND DRAFTING BY:

ARCHITECTURAL DESIGN AND DRAFTING SERVICE • HOME PLAN SERVICE • CUSTOM HOMES • REMODELING • PHONE: 763.757.5997 • ANDOVER, MINNESOTA • WWW.CROIXDESIGN.COM

BUILT BY:

EASY LIVING HOMES

BC 16-42162

THE:
ST. FRANCIS MODEL
3370 235th LANE NW
LOT 2, BLOCK 5, RUM RIVER BLUFFS
ST. FRANCIS, MN

© COPYRIGHT 2009-2017 NOTICE, ALL RIGHTS RESERVED
CROIX DESIGN AND DRAFTING, INC.

DRAIN	N.F.
CHECKED	XX
DATE:	6/01/2017
SCALE:	AS NOTED
CADD FILE #	17237

REVISIONS
XXXXXX 0000 BY:XX
XXXXXX 0000 BY:XX

SPECIAL NOTICE:
CROIX DESIGN AND DRAFTING, INC. ACCEPTS NO RESPONSIBILITY FOR ERRORS AND/OR OMISSIONS. THESE DRAWINGS ARE DESIGN CONCEPT ONLY. EVERY EFFORT HAS BEEN MADE TO PREPARE THESE DRAWINGS ACCURATELY. HOWEVER, THE CONTRACTOR SHALL VERIFY ALL DIMENSIONS AND CONDITIONS IN THE FIELD. THE CONTRACTOR SHALL BE RESPONSIBLE FOR ANY CHANGES OR ADJUSTMENTS REQUIRED DURING CONSTRUCTION. NO REPRESENTATION IS MADE OR IMPLIED FOR ACCURACY.

OFFICE: 763.757.5997
FAX: 763.757.4383
ANDOVER, MINNESOTA
WWW.CROIXDESIGN.COM



BUILT BY:
EASY LIVING HOMES

SHEET
2
OF 5
CADD FILE #
17237

NOTE!!!
VERIFY ALL MECHANICAL
EQUIPMENT LOCATIONS,
LOCATIONS ON PLAN ARE
REPRESENTATION ONLY

NOTE!!!
ALL FOOTINGS SHALL HAVE
A COMPRESSIVE STRENGTH OF
2500 PSI WITH APPROVED ADMIXTURE
THAT PROVIDES WATER AND VAPOR
RESISTANCE EQUAL TO 5000 PSI (MIN.)

MECH. NOTES!!!
FURNACE: CARRIER MODEL 58MCB060-112
60,000 BTU, 93 % EFFICIENT
A/C: CARRIER MODEL ACA324-003
2 TON, 13 SEER
ENERGY RECOVERY VENTILATOR:
RENEWAIRE MODEL EV130, 150 CFM
WATER HEATER: AO SMITH MODEL ECT-52
52 GALLON, ELECTRIC

NOTE!!!
PROVIDE 2" R10 FOAM BOARD
INSULATION • EXTERIOR CONC.
FOUNDATION HOUSE WALLS & 1"
RT FOAM BOARD INSULATION
• INTERIOR CONC. FOUNDATION
HOUSE WALLS (TYP.)

NOTE!!!
SOLID CAP BLOCK • TOP
COURSE & GROUT SOLID
WERE ANCHOR BOLTS ARE
USED & BRICK LEDGES

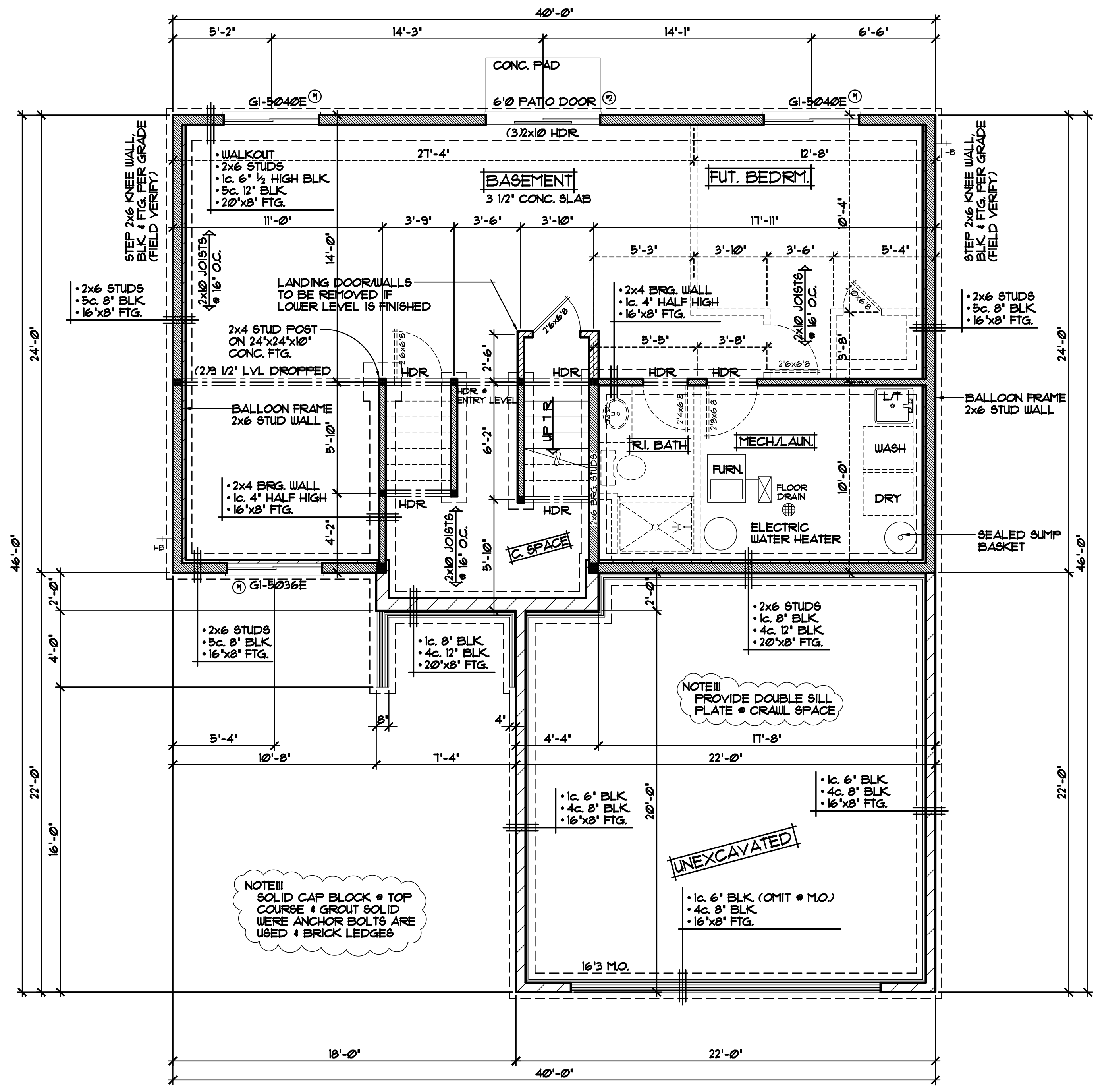
NOTE!!!
PROVIDE DOUBLE SILL
PLATE • CRAWL SPACE

UNEXCAVATED
• 1c. 6" BLK (OMIT • M.O.)
• 4c. 8" BLK
• 16'x8" FTG.

ALL HEIGHT CALCULATIONS FOR
FOUNDATIONS ARE BASED ON THE
USE OF FULL 8" HIGH BLOCK WITH
3/8" JOINTS. IF MODULAR BLOCK
IS USED, CONTRACTORS SHOULD
ADJUST HEIGHTS ACCORDINGLY

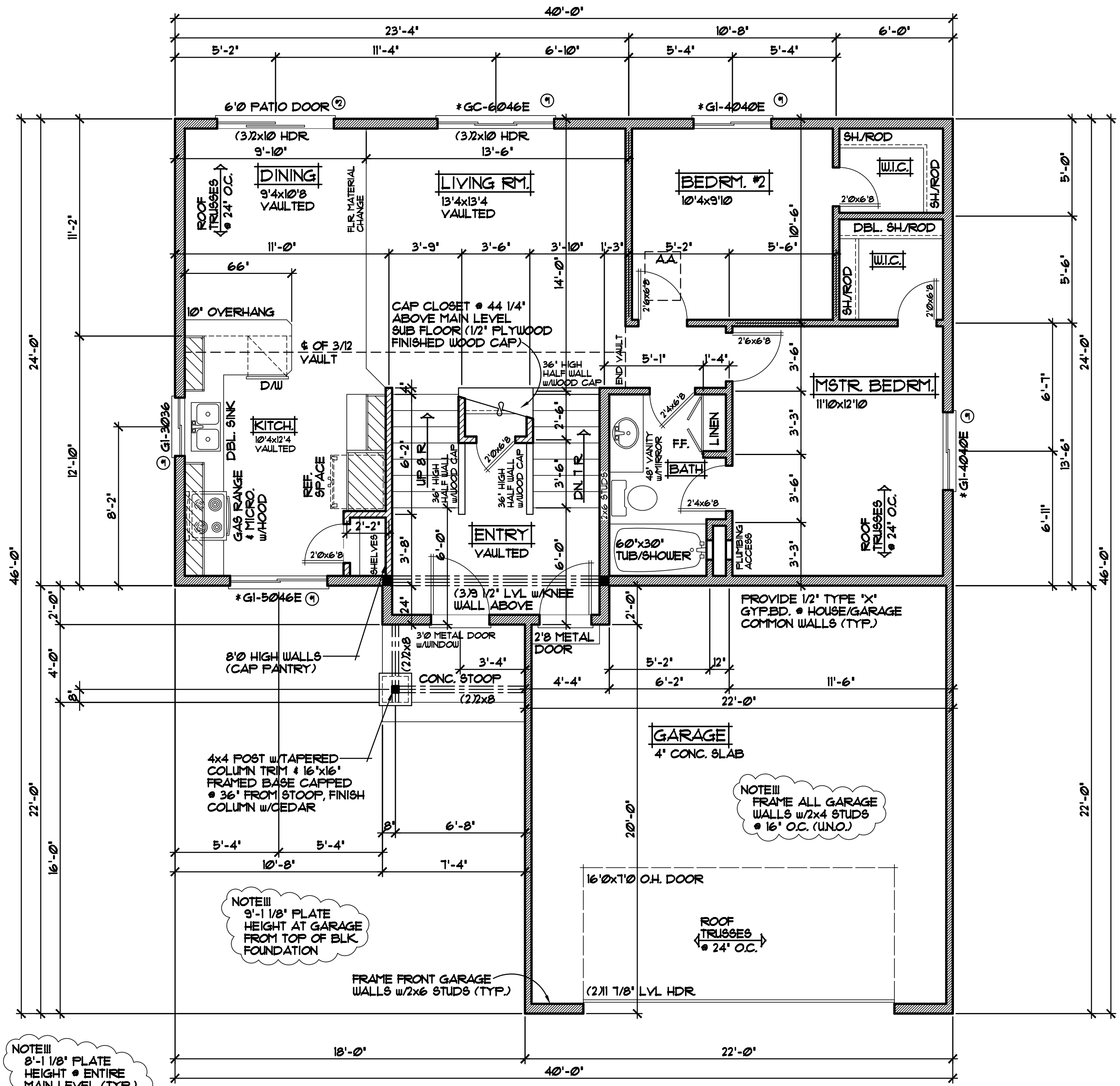
NOTE!!!
ALL WDW/DOOR OPENINGS
TO HAVE (22x10) 2" GRADE
HDR OR BETTER (W.N.O.)

NOTE!!!
VECTOR VINYL WINDOWS SPECIFIED
VERIFY ALL DOOR & WINDOW ROUGH
OPENINGS w/SUPPLIER
(* INDICATES SASH LIMITER REQUIRED)



LOWER LEVEL PLAN 1/4"=1'-0"

WINDOW and DOOR PERFORMANCE DATA	
U-VALUE / SHGC	
① SLIDER UNIT	U-VALUE = 0.30 SHGC = 0.33
② SLIDING PATIO DOOR	U-VALUE = 0.28 SHGC = 0.34



MAIN LEVEL FLOOR PLAN 1/4" = 1'-0"
983 SQ. FT.

REVISIONS
XXXXXX 0000 BY:XX
XXXXXX 0000 BY:XX

SPECIAL NOTICE:
CROIX DESIGN AND DRAFTING, INC. ACCEPTS NO RESPONSIBILITY FOR ERRORS AND/OR OMISSIONS. THESE DRAWINGS ARE DESIGN CONCEPT ONLY. EVERY EFFORT HAS BEEN MADE TO PREVENT ERRORS, BUT THE USER MUST VERIFY ALL DIMENSIONS AND SPECIFICATIONS BEFORE CONSTRUCTION. THE USER SHALL BE RESPONSIBLE FOR ANY CHANGES OR ADJUSTMENTS REQUIRED DURING ACTUAL CONSTRUCTION. NO REPRESENTATION IS MADE OR IMPLIED FOR ACCURACY.

OFFICE: 763.757.5997
FAX: 763.757.4383
ANDOVER, MINNESOTA
WWW.CROIXDESIGN.COM



BUILT BY:
EASY LIVING HOMES

SHEET
3
9 of 5
CADD FILE # 17237

REVISIONS
XXXXXX 0000 BY:XX
XXXXXX 0000 BY:XX

SPECIAL NOTICE:
CROIX DESIGN AND DRAFTING, INC. ACCEPTS NO RESPONSIBILITY FOR ERRORS AND/OR OMISSIONS. THESE DRAWINGS ARE DESIGN CONCEPT ONLY. EVERY EFFORT HAS BEEN MADE TO PREVENT ERRORS, BUT THE USER SHALL BE RESPONSIBLE FOR VERIFYING ALL DIMENSIONS AND CONDITIONS BEFORE CONSTRUCTION. THE USER SHALL BE RESPONSIBLE FOR ANY CHANGES OR ADJUSTMENTS REQUIRED DURING CONSTRUCTION. NO REPRESENTATION IS MADE OR IMPLIED FOR ACCURACY.

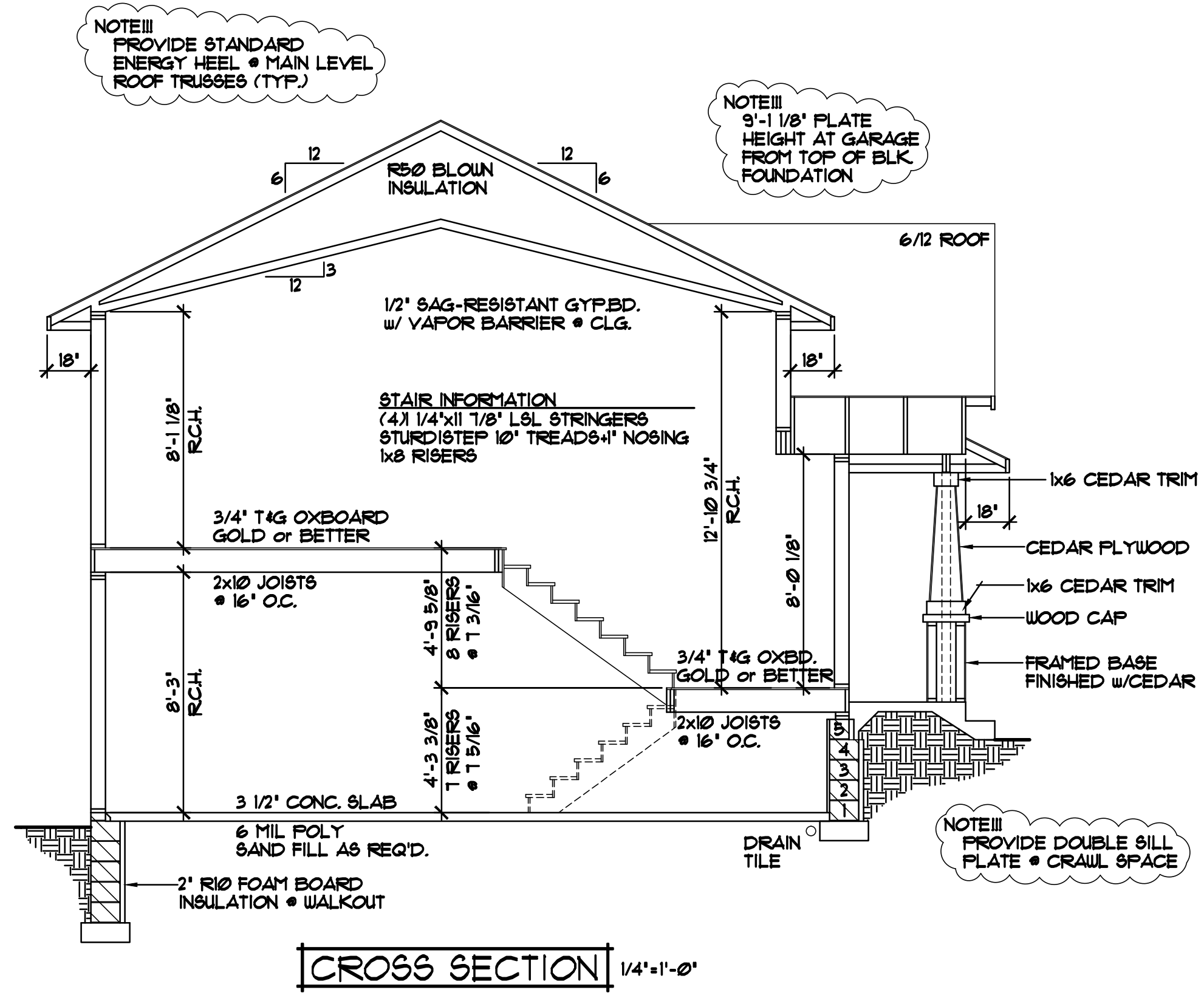
OFFICE: 763.757.5997
 FAX: 763.757.4383
 ANDOVER, MINNESOTA
 WWW.CROIXDESIGN.COM



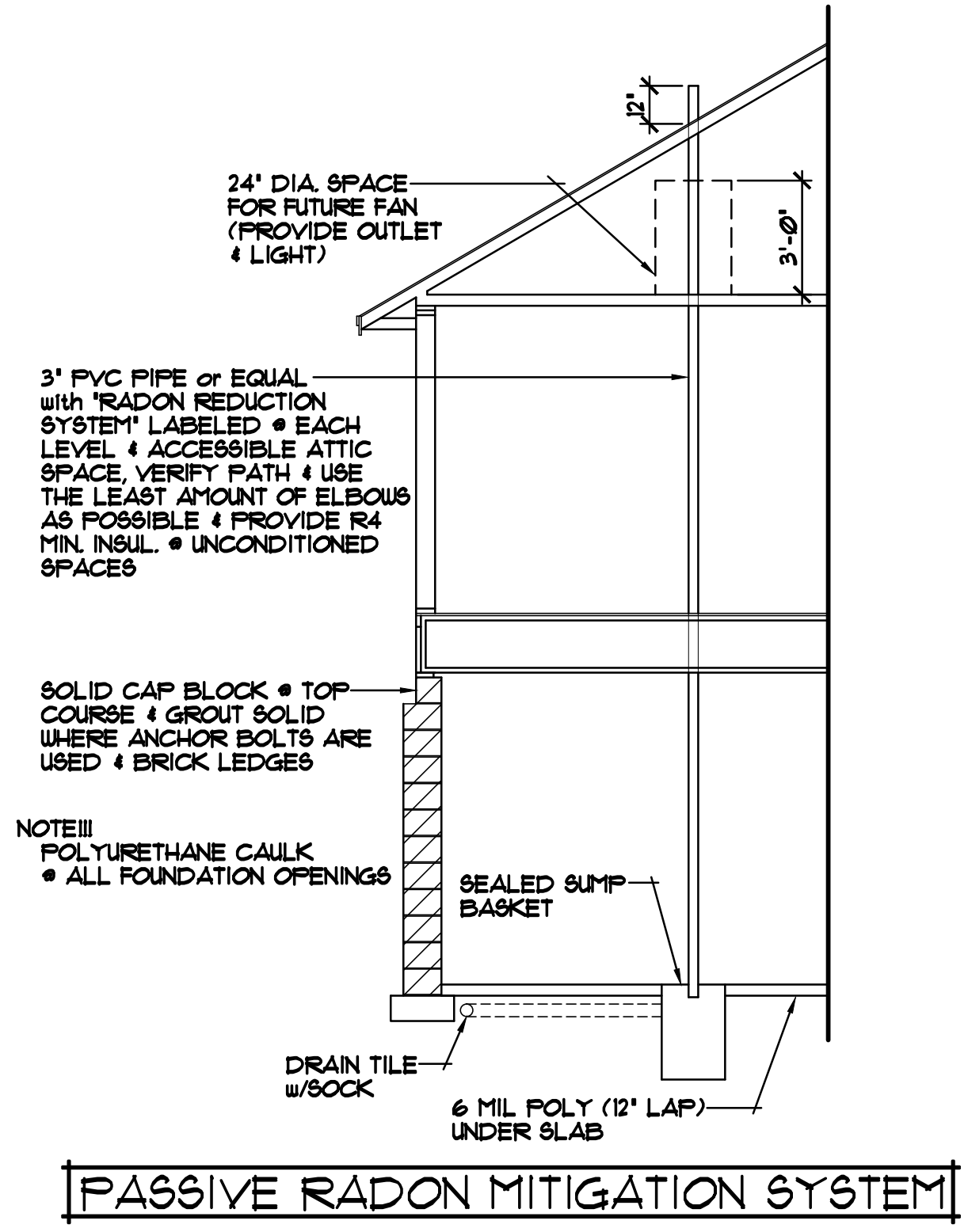
BUILT BY:
EASY LIVING HOMES

SHEET
4
 of 5
 CADD FILE #
 17237

ALL HEIGHT CALCULATIONS FOR FOUNDATIONS ARE BASED ON THE USE OF FULL 8" HIGH BLOCK WITH 3/8" JOINTS. IF MODULAR BLOCK IS USED, CONTRACTORS SHOULD ADJUST HEIGHTS ACCORDINGLY

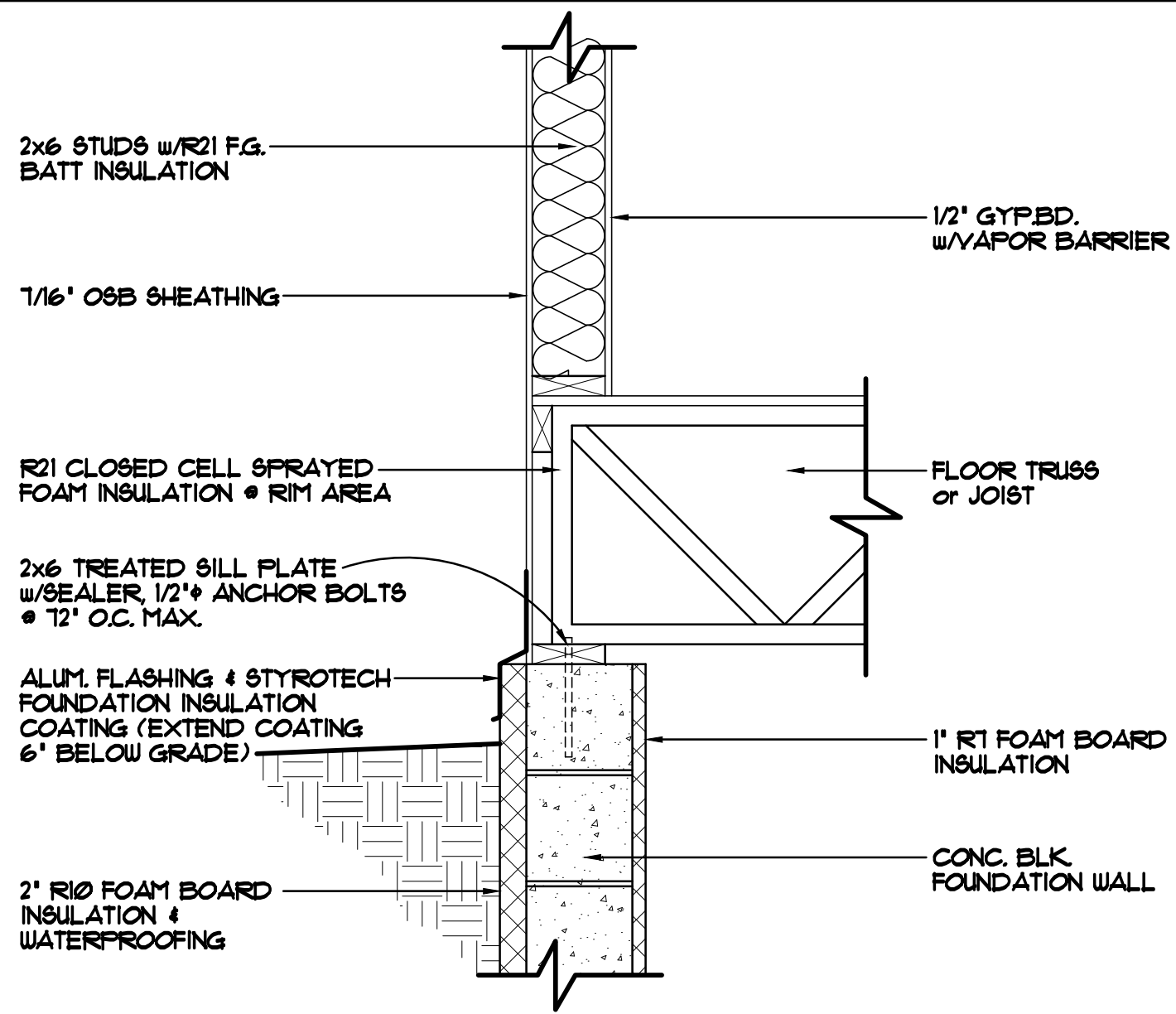


- ROOF CONSTRUCTION:**
- PRE-MANUFACTURED ROOF TRUSSES ENGINEERED BY SUPPLIER
 - 1/150 ROOF VENTS AT SOFFITS, 1/150 VENT AT RIDGE
 - AIR CHUTE AT EACH TRUSS SPACE
 - 1/16" OSB ROOF SHEATHING
 - 15# ROOFING FELT
 - ICE & WATER MEMBRANE APPLIED 24" BEYOND EXTERIOR WALL
 - 30 YEAR ARCHITECTURAL SHINGLES
- SOFFIT / FASCIA:**
- 2x6 SUB FASCIA
 - ALUMINUM FASCIA COVER
 - ALUMINUM VENTED SOFFIT
- WALL CONSTRUCTION:**
- TYVEK HOUSE WRAP
 - 1/16" OSB SHEATHING
 - 2x6 STUDS @ 16" O.C.
 - R21 FG. BATT INSULATION
 - 4 MIL POLY VAPOR BARRIER
 - 1/2" GYPSUM BOARD AT INTERIOR
- RIM AREA CONSTRUCTION:**
- SEE DETAILS (SHEET 05)
- WALL CONSTRUCTION:**
- SIMILAR TO ABOVE
- SILL CONSTRUCTION:**
- 2x6 TREATED SILL PLATE w/SEALER
 - 1/2" ANCHOR BOLTS @ 12" O.C.
- FOUNDATION CONSTRUCTION:**
- CONCRETE BLOCK WALL FOUNDATION (SEE FOUNDATION FOR COURSING)
 - INSTALL R10 RIGID FOAM BOARD INSUL. TO INTERIOR OF FOUNDATION WALLS
 - INSTALL R10 RIGID FOAM BOARD INSUL. TO EXTERIOR OF FOUNDATION WALLS
 - WATERPROOFING



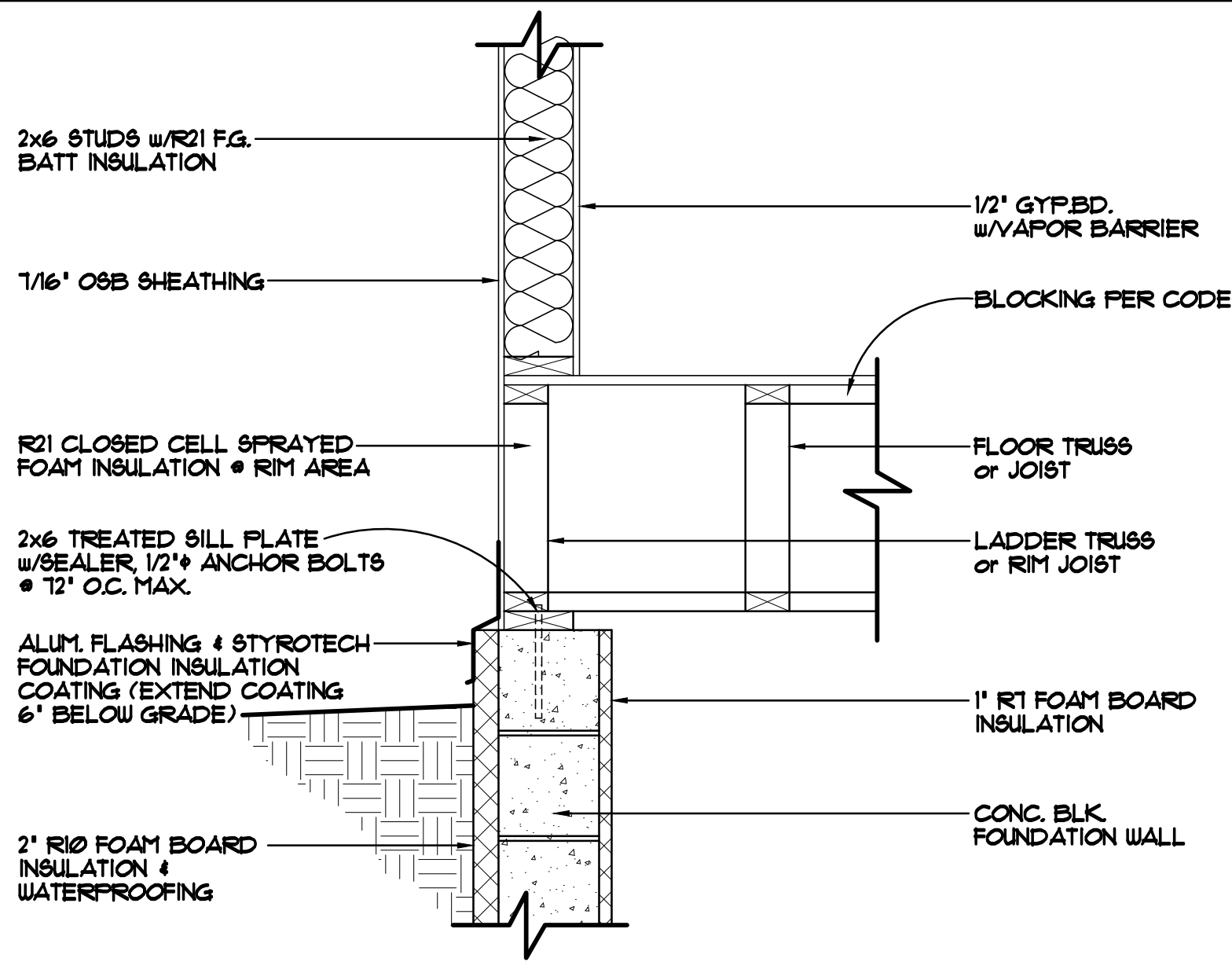
NOTE III
 POLYURETHANE CAULK @ ALL FOUNDATION OPENINGS

PASSIVE RADON MITIGATION SYSTEM



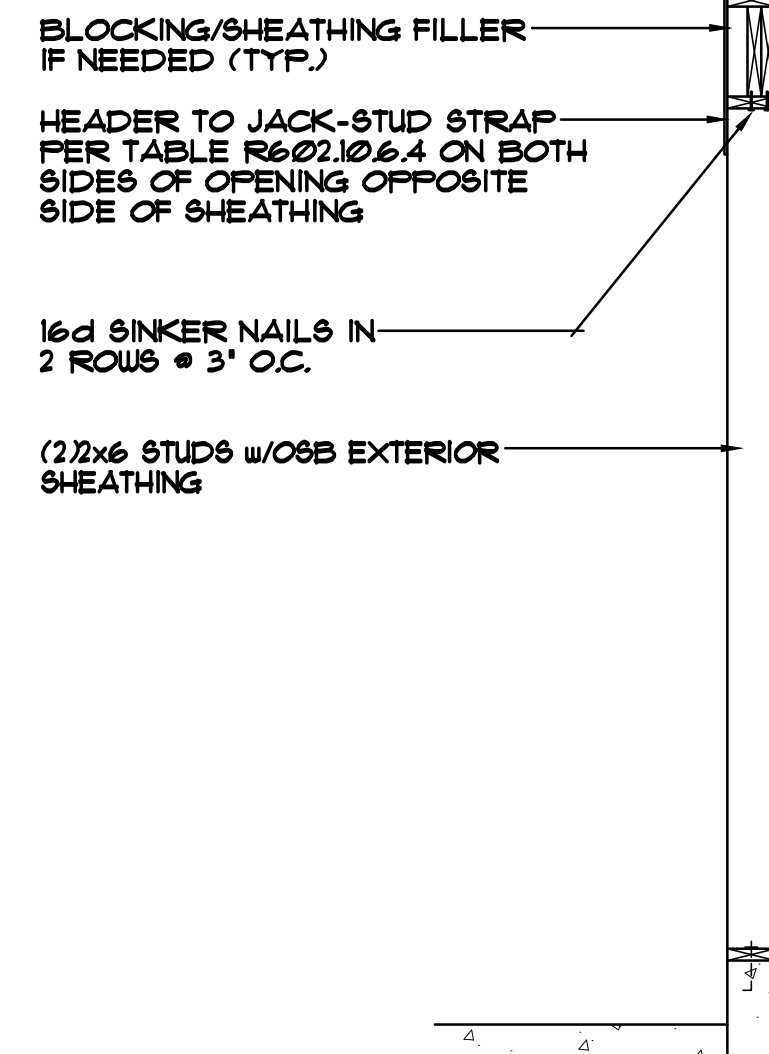
FOUNDATION/RIM AREA DETAIL 1"=1'-0"

STANDARD RIM AREA, TRUSSES/JOISTS PERPENDICULAR TO FOUNDATION WALL

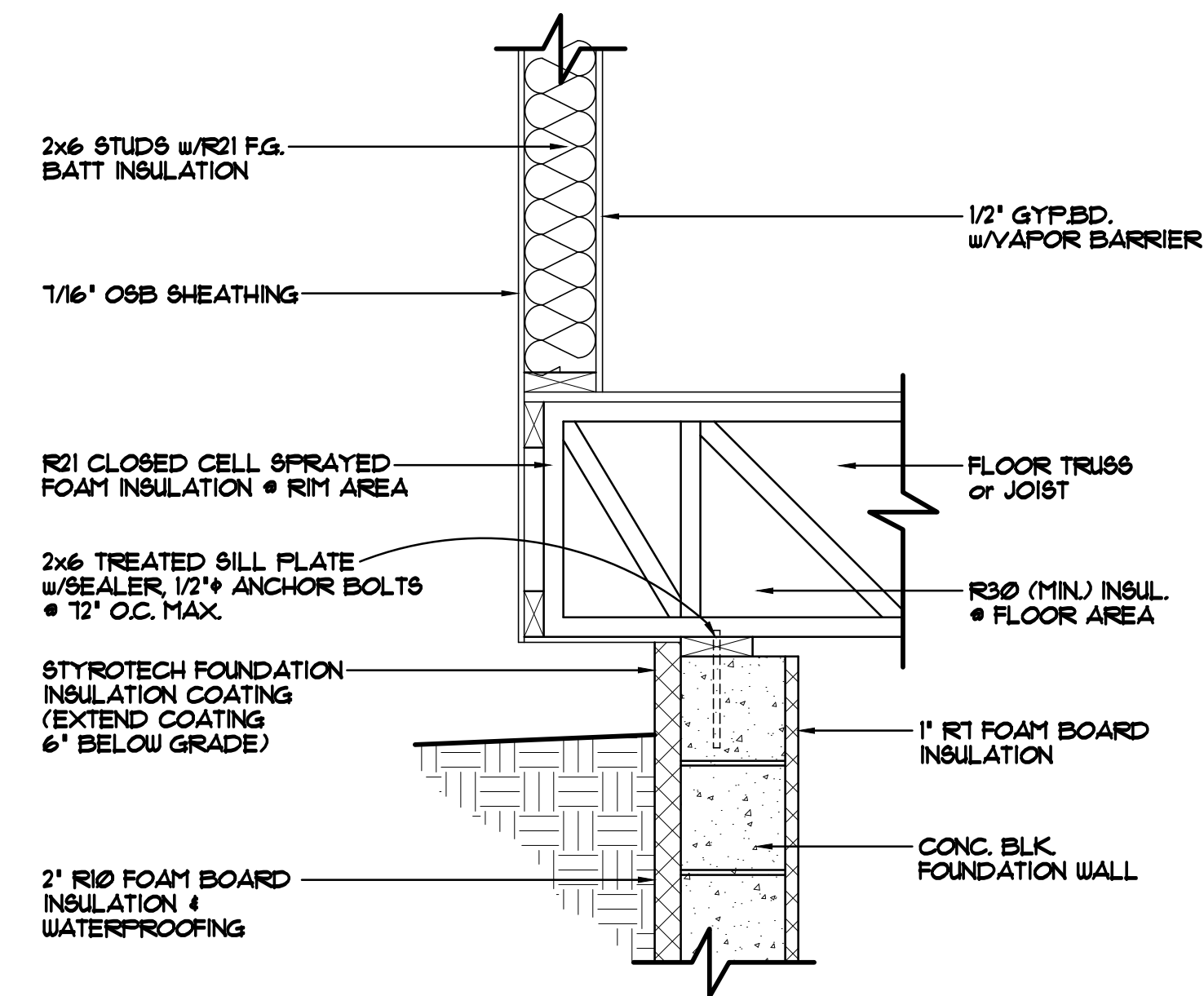


FOUNDATION/RIM AREA DETAIL 1"=1'-0"

STANDARD RIM AREA, TRUSSES/JOISTS PARALLEL TO FOUNDATION WALL

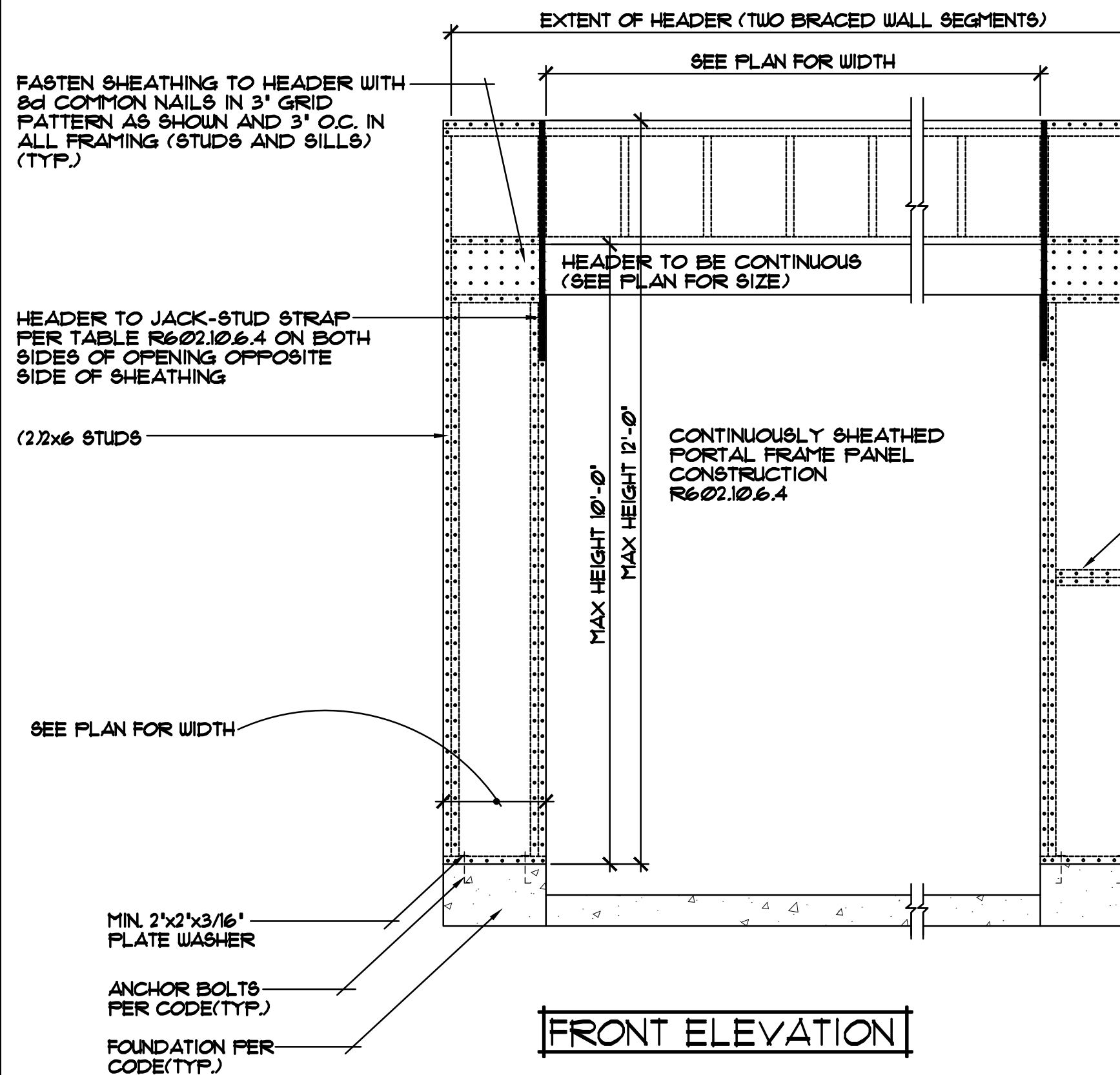


SIDE ELEVATION



FOUNDATION/RIM AREA DETAIL 1"=1'-0"

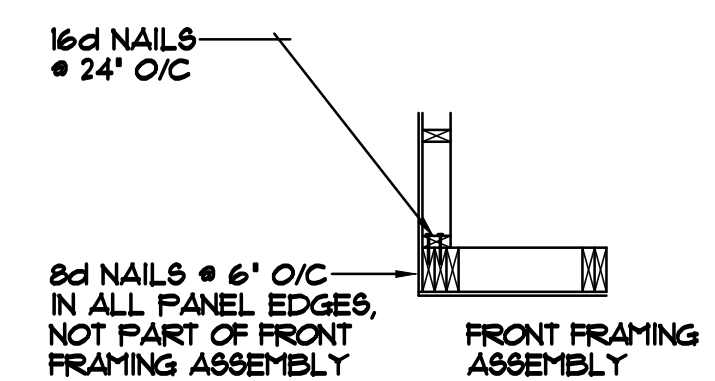
CANTILEVERED TRUSSES/JOISTS



FRONT ELEVATION

CONTINUOUSLY SHEATHED PORTAL FRAME PANEL CONSTRUCTION 1/2"=1'-0"

CORNER FRAMING DETAIL



REVISIONS
XX/XX/XX 0000 BY:XX
XX/XX/XX 0000 BY:XX

SPECIAL NOTICE: CROIX DESIGN AND DRAFTING, INC. ACCEPTS NO RESPONSIBILITY FOR ERRORS AND/OR OMISSIONS. THESE DRAWINGS ARE DESIGN CONCEPT ONLY. EVERY EFFORT HAS BEEN MADE TO PREVENT ERRORS, BUT THE USER MUST VERIFY ALL DIMENSIONS AND CONDITIONS BEFORE CONSTRUCTION. THE USER SHALL BE RESPONSIBLE FOR ANY CHANGES OR ADJUSTMENTS REQUIRED DURING CONSTRUCTION. NO REPRESENTATION IS MADE OR IMPLIED FOR ACCURACY.

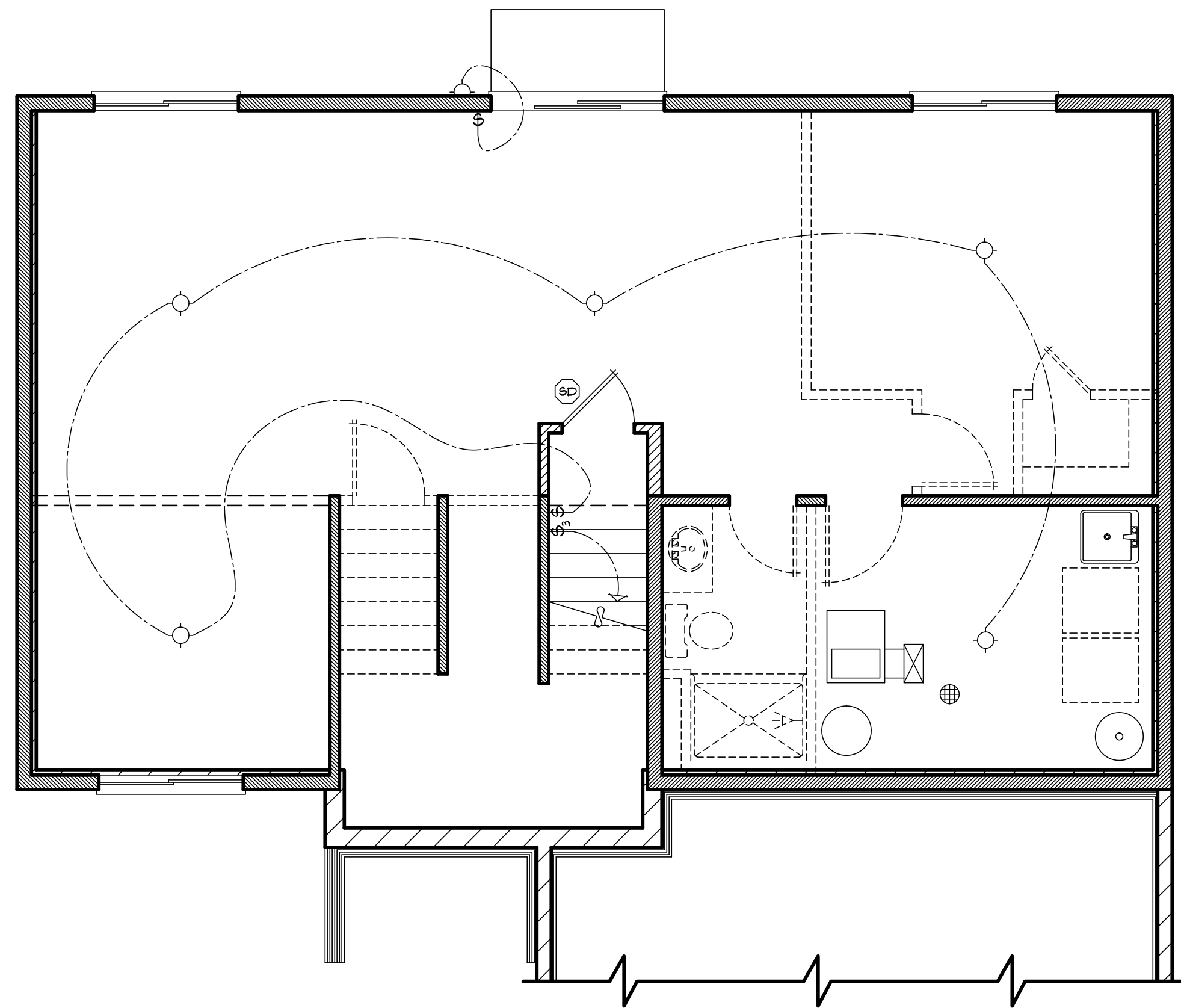
OFFICE: 763.757.5997
FAX: 763.757.4383
ANDOVER, MINNESOTA
WWW.CROIXDESIGN.COM



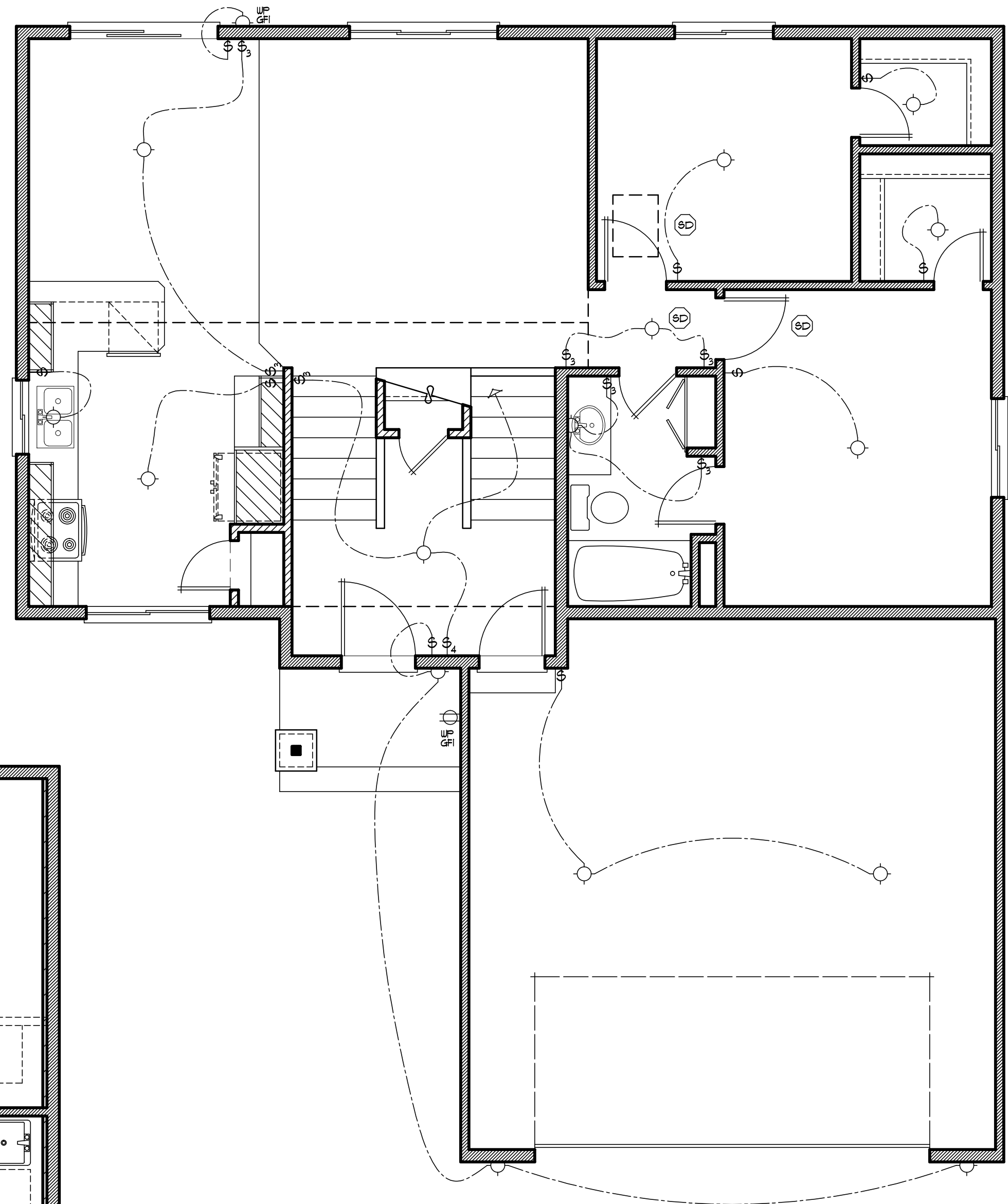
BUILT BY:
EASY LIVING HOMES

SHEET
5
OF 5
CADD FILE #
17237

ELECTRICAL and MECHANICAL SYMBOLS	
▽ TELEPHONE JACK	☯ EXHAUST FAN
▼ TV/CABLE JACK	○ LIGHT - CEILING FIXTURE
Ⓢ SWITCH - SINGLE	○ LIGHT - RECESSED FIXTURE
Ⓢ ₃ SWITCH - THREE WAY	○ LIGHT - RECESSED DIRECTIONAL
Ⓢ ₄ SWITCH - FOUR WAY	○ LIGHT - PENDANT
Ⓢ _D SWITCH - DIMMER	△ LIGHT - TRACK
Ⓢ _{FC} SWITCH - FAN CONTROLS	△ LIGHT - FLUORESCENT
○ OUTLET - DUPLEX	○ LIGHT - WALL MOUNTED
○ OUTLET - DUPLEX SWITCHED	Ⓢ _{FD} FLOOR DRAIN
○ _{GFI} OUTLET - GROUND FAULT	Ⓢ _{HB} HOSE BIBB
○ _{WP} OUTLET - WEATHERPROOF	Ⓢ _{GAS} GAS OUTLET
○ OUTLET - FLOOR/SOFFIT MOUNT	Ⓢ HVAC - SUPPLY VENT
○ ₂₂₀ OUTLET - RANGE OR DRYER	Ⓢ HVAC - RETURN VENT
Ⓢ OUTLET - QUAD	
Ⓢ _{SD} SMOKE DETECTOR	



LOWER LEVEL ELECTRICAL PLAN 1/4"=1'-0"

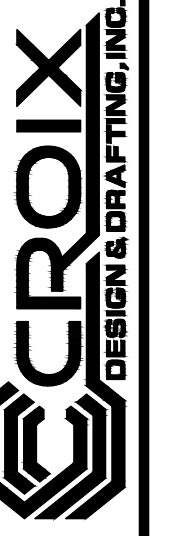


MAIN LEVEL ELECTRICAL PLAN 1/4"=1'-0"

REVISIONS
XXXXXX 0000 BY:XX
XXXXXX 0000 BY:XX

SPECIAL NOTICE:
CROIX DESIGN AND DRAFTING, INC. ACCEPTS NO RESPONSIBILITY FOR ERRORS AND/OR OMISSIONS. THESE DRAWINGS ARE DESIGN CONCEPT ONLY. EVERY EFFORT HAS BEEN MADE TO PREVENT ERRORS AND OMISSIONS. THE USER SHALL BE RESPONSIBLE FOR VERIFYING ALL DIMENSIONS AND CONDITIONS OF THE PROJECT. THE USER SHALL BE RESPONSIBLE FOR ANY CHANGES OR ADJUSTMENTS REQUIRED DURING CONSTRUCTION. NO REPRESENTATION IS MADE OR IMPLIED FOR ACCURACY.

OFFICE: 763.757.5997
FAX: 763.757.4383
ANDOVER, MINNESOTA
WWW.CROIXDESIGN.COM



BUILT BY:
EASY LIVING HOMES

SHEET
X
CADD FILE #
17237