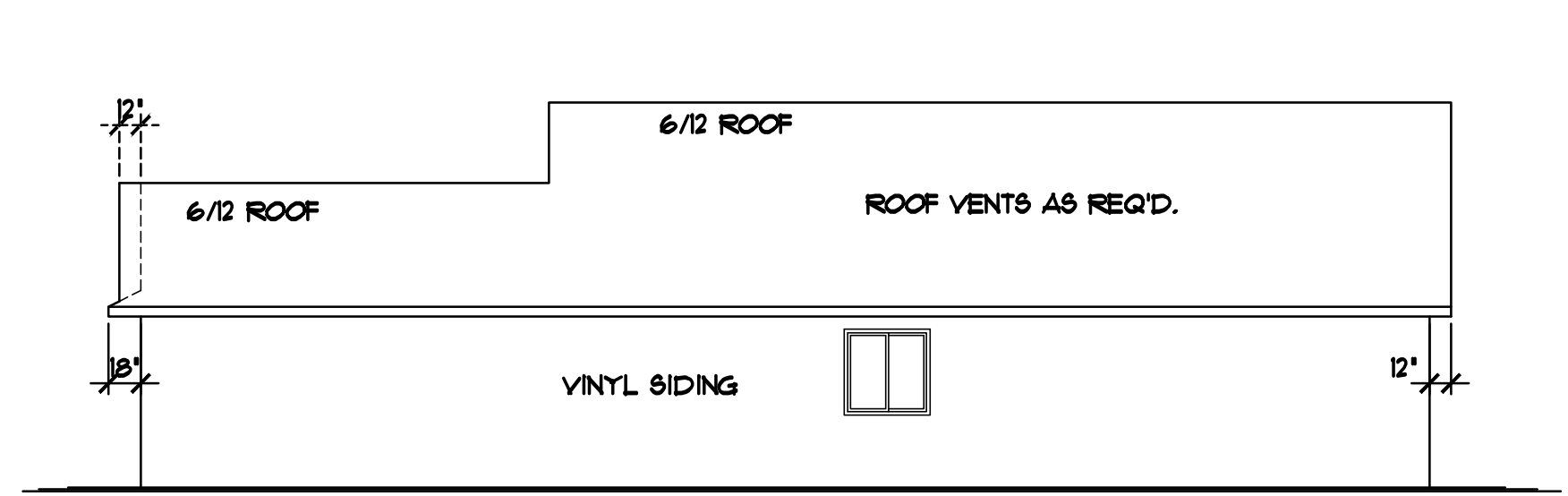
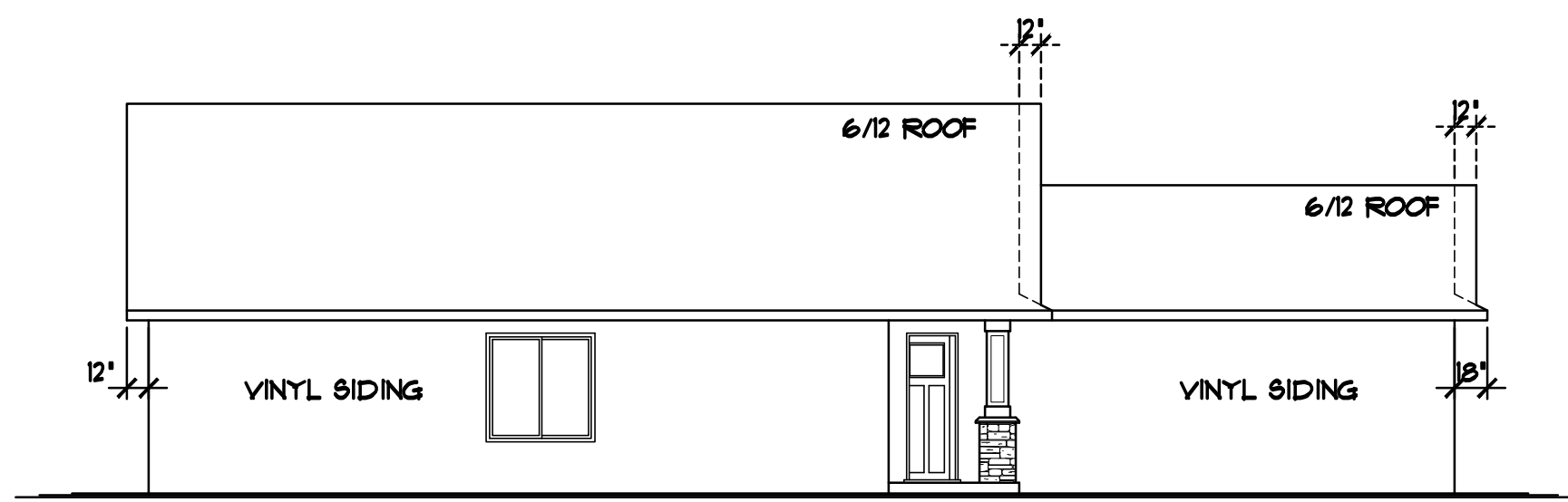


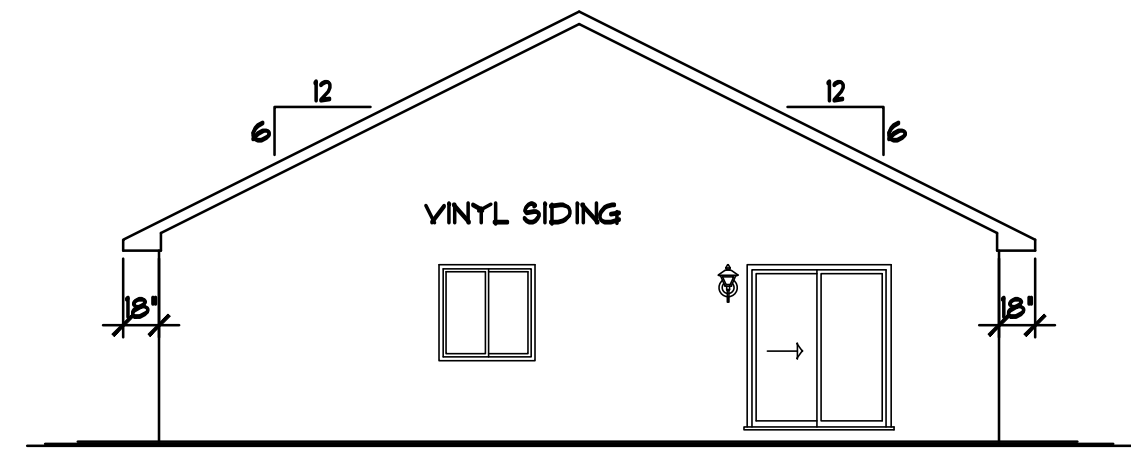
REVISIONS	BY
143071	N.F.
16162	N.F.
17023	N.F.



RIGHT ELEVATION 1/8"=1'-0"

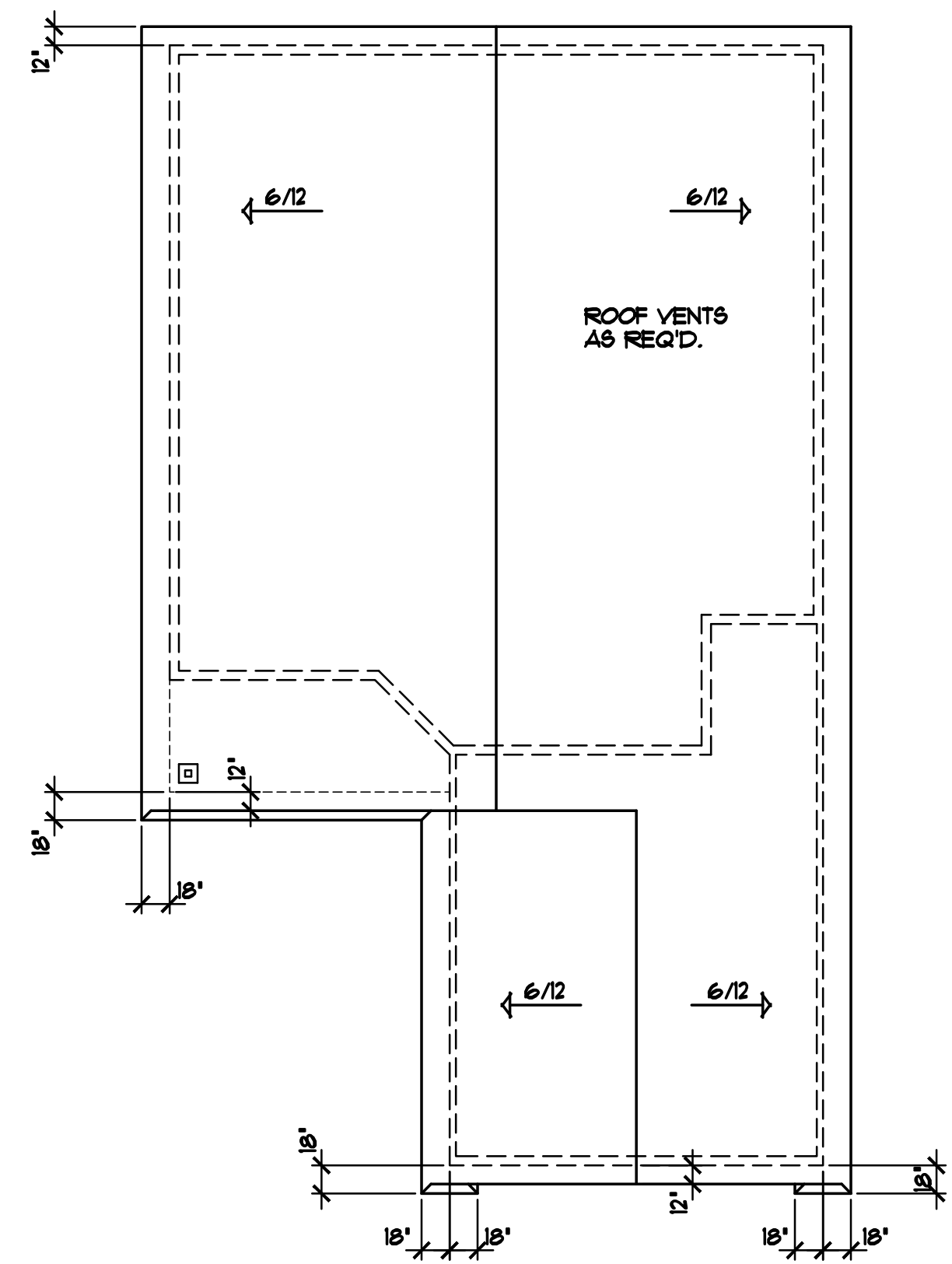


LEFT ELEVATION 1/8"=1'-0"

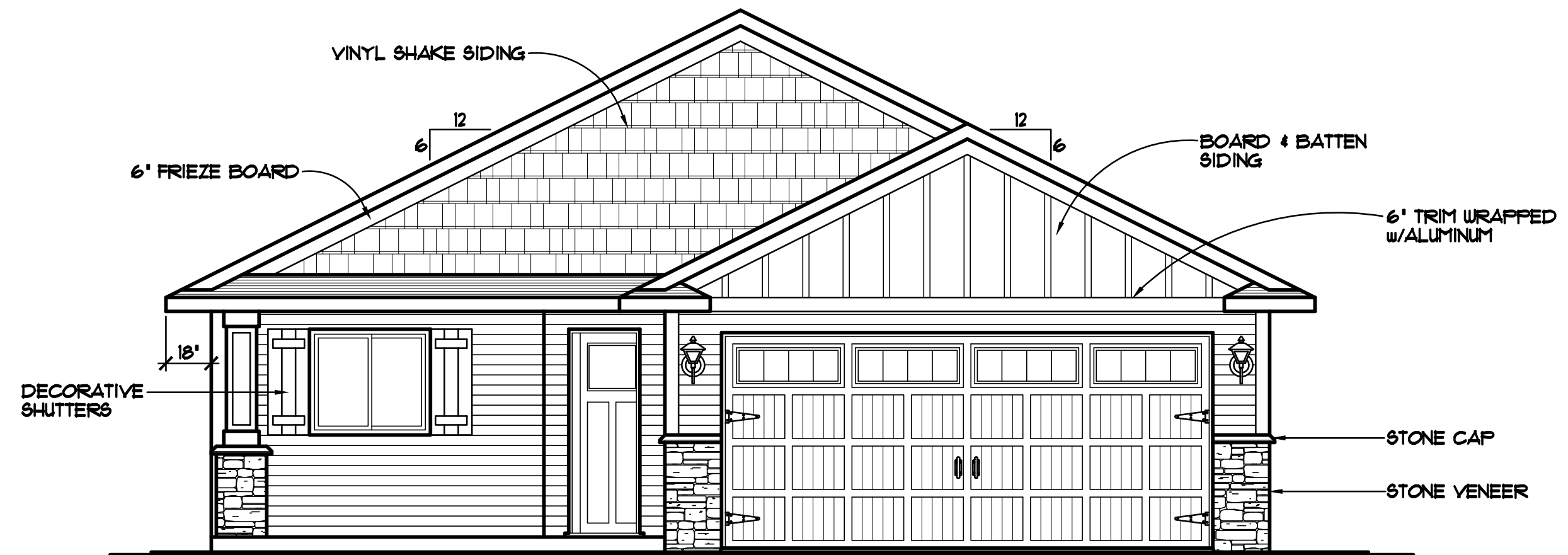


REAR ELEVATION 1/8"=1'-0"

- VECTOR WINDOWS SPEC'D. VERIFY ALL DOOR AND WINDOW ROUGH OPENINGS WITH SUPPLIER
- ALUMINUM SOFFITS & FASCIA
- VINYL SIDING/CORNER TRIM
- STONE VENEER AS SHOWN



BIRD'S-EYE ROOF PLAN 1/8"=1'-0"



FRONT ELEVATION 1/4"=1'-0"

1188 SQ. FT. MAIN LEVEL
48 SQ. FT. MECH. RM. NOT INCLUDED

THE:
ISANTI MODEL HOME
820 WINSOME WAY
LOT 24, BLOCK 3, VILLAGES ON THE RUM
ISANTI, MN

SPECIAL NOTICE:
CROIX DESIGN AND DRAFTING, INC. ACCEPTS NO RESPONSIBILITY FOR ERRORS AND/OR OMISSIONS. THESE DRAWINGS ARE DESIGN CONCEPT ONLY. EVERY EFFORT HAS BEEN MADE TO DESIGN ACCURATELY. THE OWNER, GENERAL CONTRACTOR, SUB-CONTRACTORS, AND SUPPLIERS MUST CHECK ALL DETAILS AND DIMENSIONS AND BE RESPONSIBLE FOR ANY CHANGES OR ADJUSTMENTS REQUIRED DURING ACTUAL CONSTRUCTION. NO REPRESENTATION IS MADE OR IMPLIED FOR ACCURACY.

COPYRIGHT NOTICE, ALL RIGHTS RESERVED
THESE ARCHITECTURAL PLANS AND ALL RELATED WORKS ARE PROTECTED BY UNITED STATES COPYRIGHT LAWS, AND MAY NOT BE REPRODUCED OR TRANSMITTED IN ANY FORM OR BY ANY MEANS, WITHOUT THE EXPRESS WRITTEN PERMISSION OF CROIX DESIGN AND DRAFTING, INC.

DESIGN and DRAFTING BY:

ARCHITECTURAL DESIGN and DRAFTING SERVICE • HOME PLAN SERVICE • CUSTOM HOMES • REMODELING • PHONE: 763.757.5997 • ANDOVER, MINNESOTA • WWW.CROIXDESIGN.COM

BUILT BY:

163-154-5518 LIC. # 3649

DRAWN	N.F.
CHECKED	XX
DATE:	6/28/2017
SCALE:	AS NOTED
CADD FILE #	17274

REVISIONS
XXXXXX 0000 BY:XX
XXXXXX 0000 BY:XX

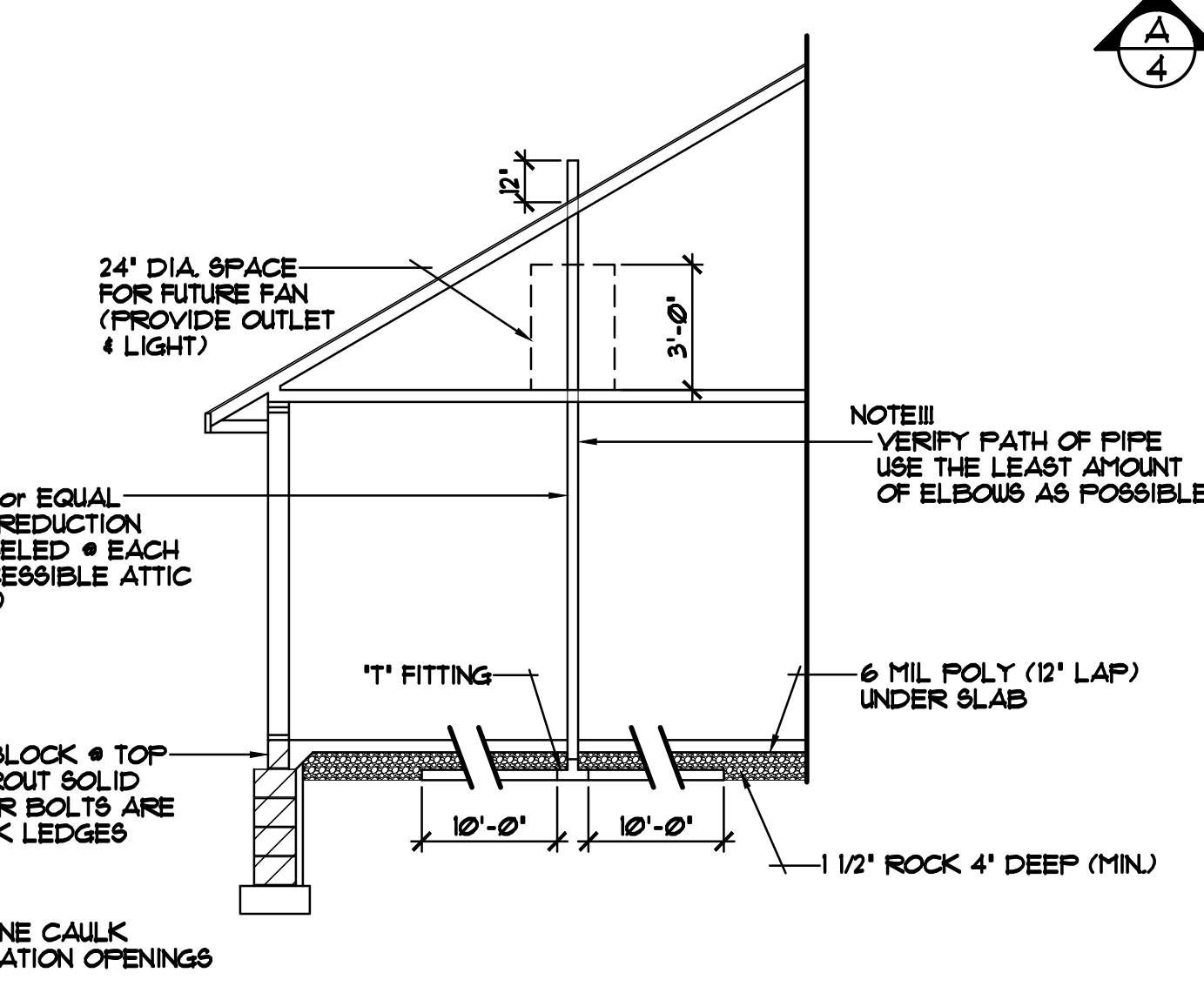
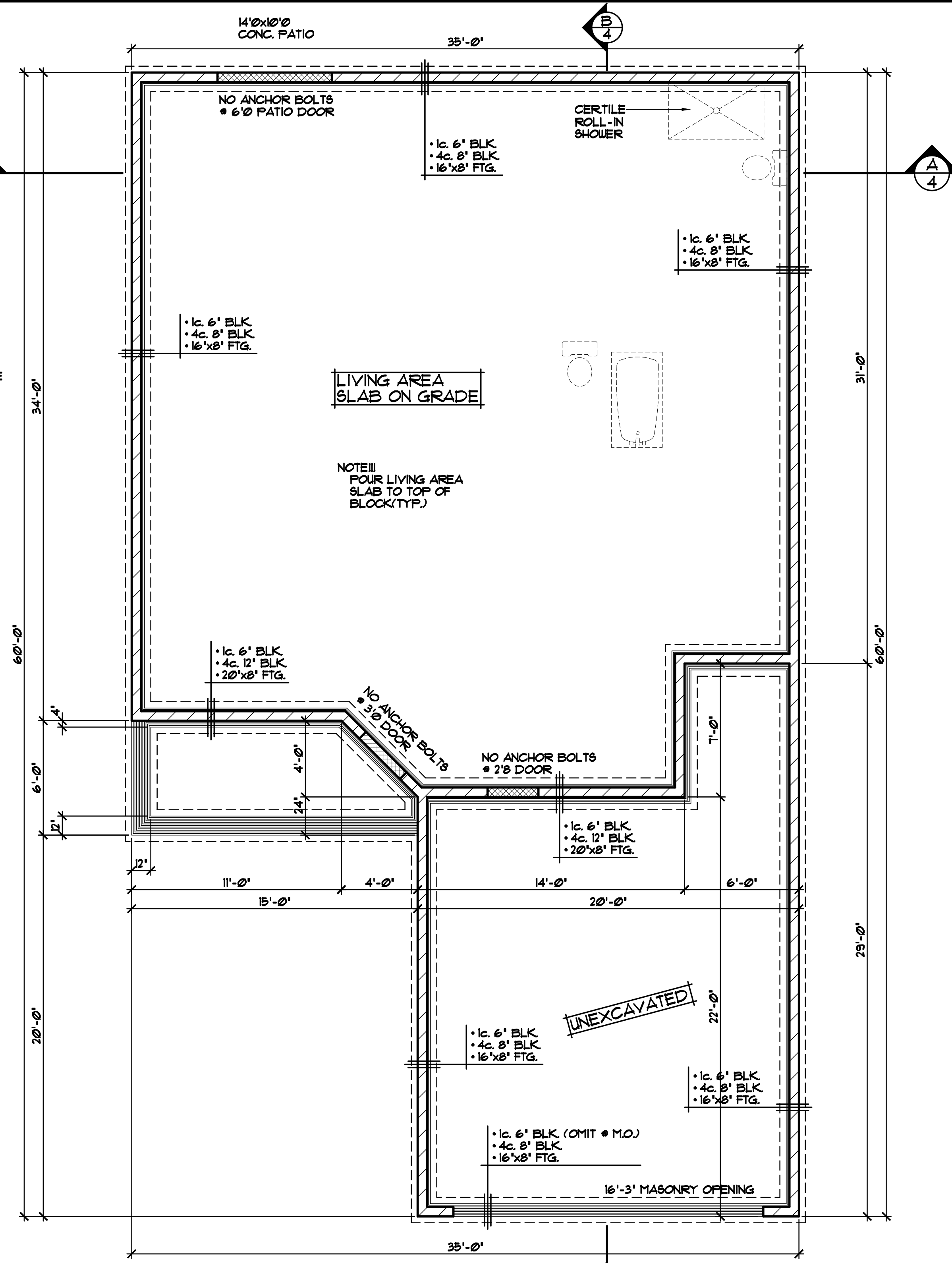
SPECIAL NOTICE:
CROIX DESIGN AND DRAFTING, INC. ACCEPTS NO RESPONSIBILITY FOR ERRORS AND/OR OMISSIONS. THESE DRAWINGS ARE DESIGN CONCEPT ONLY. EVERY EFFORT HAS BEEN MADE TO PREPARE THESE DRAWINGS ACCURATELY. HOWEVER, THE CONTRACTOR SHALL VERIFY ALL DIMENSIONS AND CONDITIONS IN THE FIELD. THE CONTRACTOR SHALL BE RESPONSIBLE FOR ANY CHANGES OR ADJUSTMENTS REQUIRED DURING CONSTRUCTION. NO REPRESENTATION IS MADE OR IMPLIED FOR ACCURACY.

OFFICE: 763.757.5997
FAX: 763.757.4383
ANDOVER, MINNESOTA
WWW.CROIXDESIGN.COM



BUILT BY:
SEMLER HOMES

SHEET
2
of 4
CADD FILE #
17274

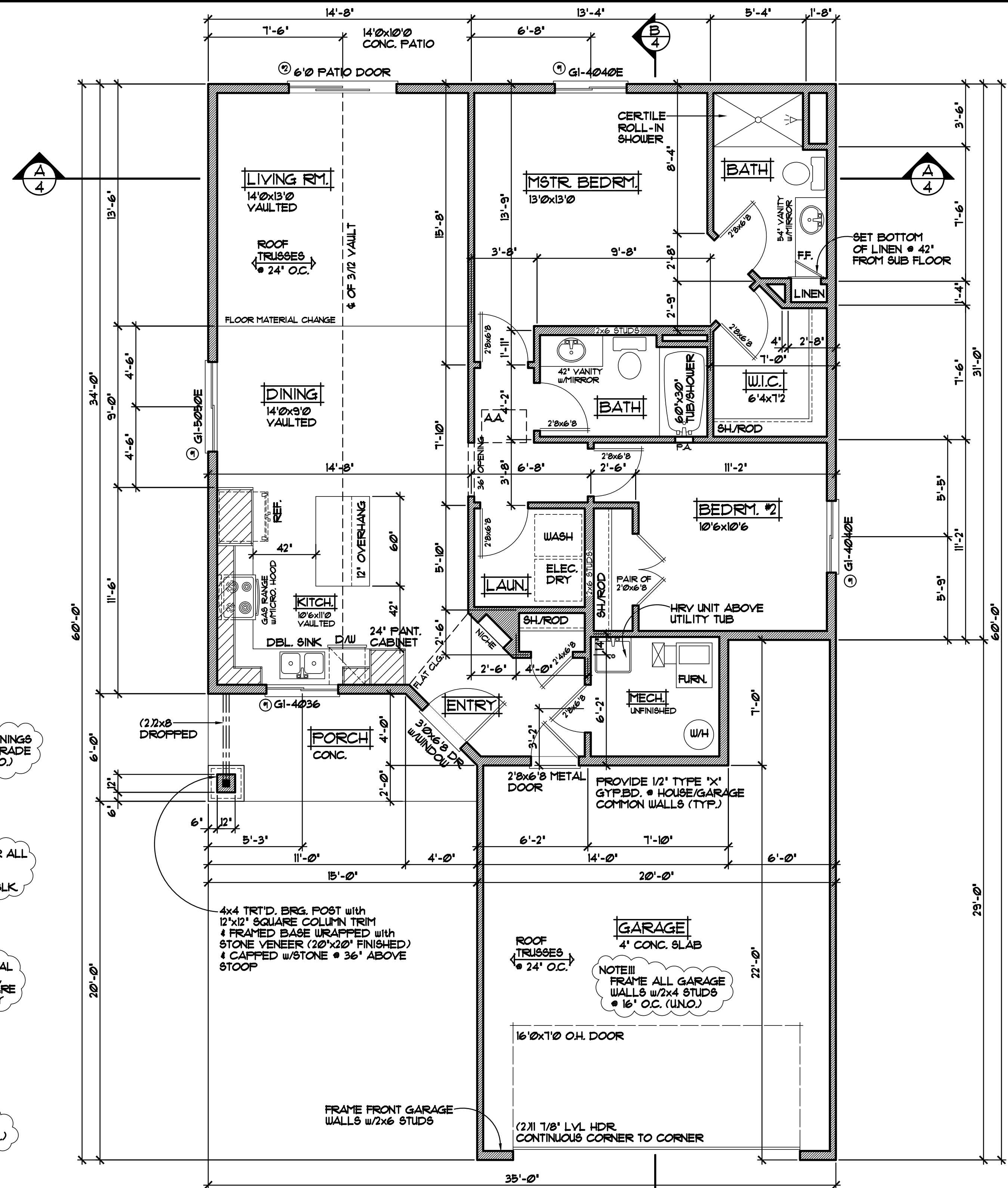


ALTERNATE METHOD FOR PASSIVE RADON MITIGATION SYSTEM

ALL HEIGHT CALCULATIONS FOR FOUNDATIONS ARE BASED ON THE USE OF FULL 8" HIGH BLOCK w/ 3/8" JOINTS. IF MODULAR BLOCK IS USED, CONTRACTORS SHOULD ADJUST HEIGHTS ACCORDINGLY.

FOUNDATION PLAN 1/4"=1'-0"

WINDOW and DOOR PERFORMANCE DATA U-VALUE / SHGC	
①	GLIDER UNIT U-VALUE = 0.30 SHGC = 0.34
②	SLIDING PATIO DOOR U-VALUE = 0.28 SHGC = 0.34



NOTE III
ALL WDW/DOOR OPENINGS
TO HAVE (2)2x10 @ 2 GRADE
HDR. or BETTER (UNO.)

NOTE III
TOP OF RO. FOR ALL
WINDOWS TO BE
6'-10 1/2" FROM
TOP OF CONC. BLK.

NOTE III
VERIFY ALL MECHANICAL
EQUIPMENT LOCATIONS,
LOCATIONS ON PLAN ARE
REPRESENTATION ONLY

NOTE III
8'-1 1/8" PLATE
HEIGHT @ ENTIRE
MAIN LEVEL (UNO.)

MAIN LEVEL FLOOR PLAN 1/4" = 1'-0"
1188 SQ. FT. MAIN LEVEL (48 SQ. FT. MECH. RM. NOT INCLUDED)

VECTOR WINDOWS SPEC'D.
VERIFY ALL DOOR AND WINDOW
ROUGH OPENINGS WITH SUPPLIER

REVISIONS
XXXXXX 0000 BY:XX
XXXXXX 0000 BY:XX

SPECIAL NOTICE:
CROIX DESIGN AND DRAFTING, INC. ACCEPTS NO RESPONSIBILITY FOR ERRORS AND/OR OMISSIONS. THESE DRAWINGS ARE DESIGN CONCEPT ONLY. EVERY EFFORT HAS BEEN MADE TO PREPARE THESE DRAWINGS ACCURATELY. HOWEVER, THE USER SHALL BE RESPONSIBLE FOR VERIFYING ALL DIMENSIONS AND CONDITIONS BEFORE CONSTRUCTION. THE USER SHALL BE RESPONSIBLE FOR ANY CHANGES OR ADJUSTMENTS REQUIRED DURING CONSTRUCTION. NO REPRESENTATION IS MADE OR IMPLIED FOR ACCURACY.

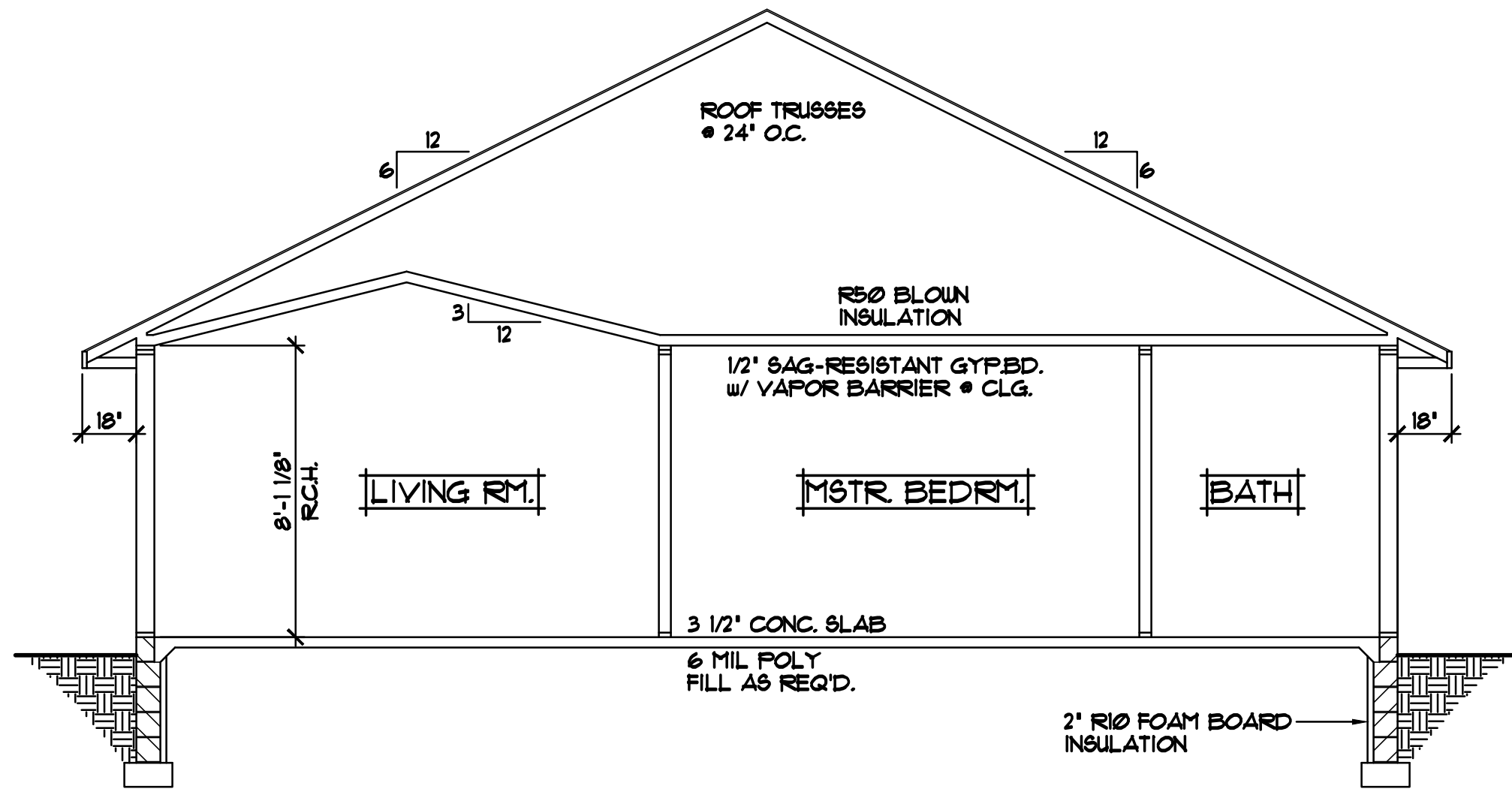
OFFICE: 763.757.5997
FAX: 763.757.4383
ANDOVER, MINNESOTA
WWW.CROIXDESIGN.COM



BUILT BY:
SEMLER HOMES

SHEET
3
of 4
CADD FILE #
17274

REVISIONS	
XXXXXX	0000
BY:XX	
XXXXXX	0000
BY:XX	



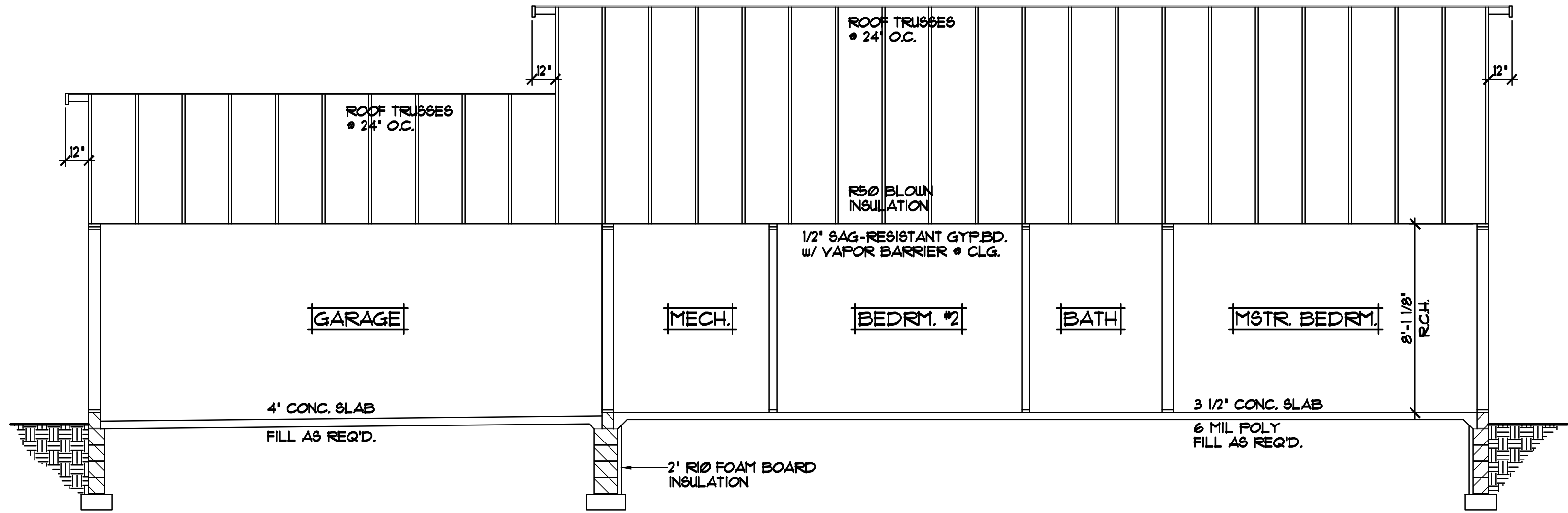
CROSS SECTION "A" 1/4"=1'-0"

- ROOF CONSTRUCTION:**
- PRE-MANUFACTURED ROOF TRUSSES-ENGINEERED BY SUPPLIER
 - 1/150 ROOF VENT AT SOFFITS, 1/150 VENT AT RIDGE
 - AIR CHUTE AT EACH TRUSS SPACE
 - 1/16" ROOF SHEATHING
 - 15# ROOFING FELT
 - ICE & WATER MEMBRANE APPLIED 24" PAST EXTERIOR WALL
 - 30 YEAR RAISED TAB SHINGLES

- SOFFIT / FASCIA:**
- 2x6 SUB-FASCIA
 - MAINTENANCE FREE FASCIA COVER
 - MAINTENANCE FREE VENTED SOFFIT

- WALL CONSTRUCTION:**
- TYVEK HOUSE WRAP
 - 1/16" OSB SHEATHING
 - 2x6 STUDS @ 16" O.C.
 - WINDOWS PER SPEC'S
 - R-21 F.G. BATT INSULATION
 - 4 MIL POLY VAPOR BARRIER
 - 1/2" GYPSUM BOARD

- SILL CONSTRUCTION:**
- 2x6 SILL PLATE & SEALER
 - 1/2" ANCHOR BOLTS @ 12" O.C.



CROSS SECTION "B" 1/4"=1'-0"

ALL HEIGHT CALCULATIONS FOR FOUNDATIONS ARE BASED ON THE USE OF FULL 8" HIGH BLOCK w/ 3/8" JOINTS. IF MODULAR BLOCK IS USED, CONTRACTORS SHOULD ADJUST HEIGHTS ACCORDINGLY.

SPECIAL NOTICE:
CROIX DESIGN AND DRAFTING, INC. ACCEPTS NO RESPONSIBILITY FOR ERRORS AND/OR OMISSIONS. THESE DRAWINGS ARE DESIGN CONCEPT ONLY. EVERY EFFORT HAS BEEN MADE TO PREVENT ERRORS, BUT THE USER MUST VERIFY ALL DIMENSIONS, CONDITIONS, AND MATERIALS BEFORE CONSTRUCTION. THE USER SHALL BE RESPONSIBLE FOR ANY CHANGES OR ADJUSTMENTS REQUIRED DURING CONSTRUCTION. NO REPRESENTATION IS MADE OR IMPLIED FOR ACCURACY.

OFFICE: 763.757.5997
 FAX: 763.757.4383
 ANDOVER, MINNESOTA
 WWW.CROIXDESIGN.COM

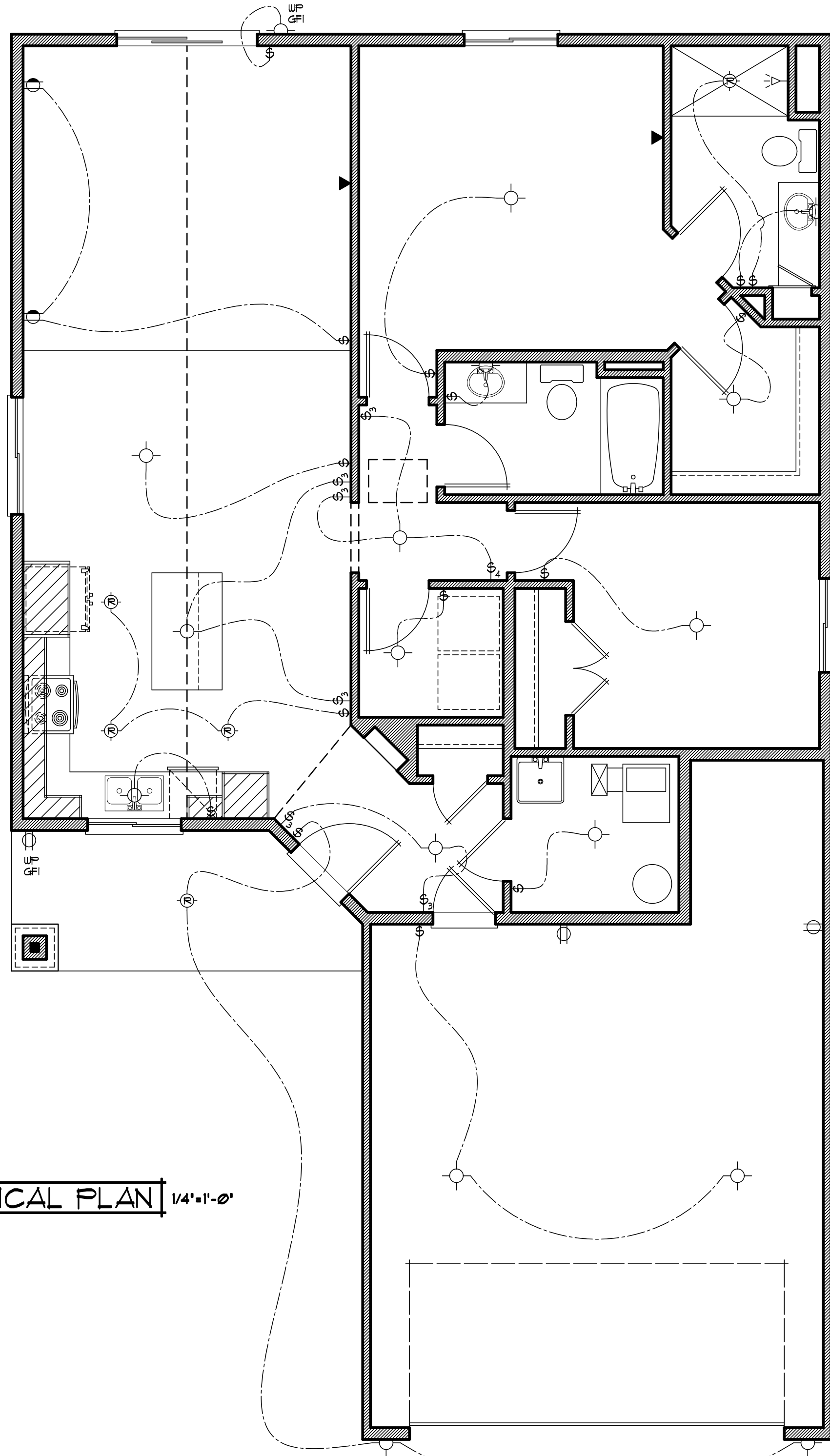


BUILT BY:
SEMLER HOMES

SHEET
 4
 of 4
 CADD FILE #
 17274

ELECTRICAL and MECHANICAL SYMBOLS	
▽ TELEPHONE JACK	☯ EXHAUST FAN
▼ TV/CABLE JACK	○ LIGHT - CEILING FIXTURE
⊕ SWITCH - SINGLE	⊕ LIGHT - RECESSED FIXTURE
⊕ ₃ SWITCH - THREE WAY	⊕ LIGHT - RECESSED DIRECTIONAL
⊕ ₄ SWITCH - FOUR WAY	⊕ ^{FEN} LIGHT - PENDANT
⊕ ^D SWITCH - DIMMER	△ LIGHT - TRACK
⊕ _{FC} SWITCH - FAN CONTROLS	↔ LIGHT - FLUORESCENT
○ OUTLET - DUPLEX	○ LIGHT - WALL MOUNTED
○ OUTLET - DUPLEX SWITCHED	⊕ ^{FD} FLOOR DRAIN
○ ^{GF} OUTLET - GROUND FAULT	⊕ ^{HB} HOSE BIBB
○ ^{WP} OUTLET - WEATHERPROOF	⊕ ^{GAS} GAS OUTLET
○ OUTLET - FLOOR/SOFFIT MOUNT	⊕ HVAC - SUPPLY VENT
○ ₂₂₀ OUTLET - RANGE OR DRYER	⊕ HVAC - RETURN VENT
⊕ OUTLET - QUAD	
⊕ ^{SD} SMOKE DETECTOR	

ELECTRICAL PLAN 1/4"=1'-0"



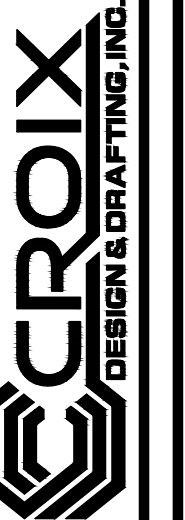
REVISIONS

XXXXXX
0000
BY:XX

XXXXXX
0000
BY:XX

SPECIAL NOTICE:
CROIX DESIGN AND DRAFTING, INC. ACCEPTS NO RESPONSIBILITY FOR ERRORS AND/OR OMISSIONS. THESE DRAWINGS ARE DESIGN CONCEPT ONLY. EVERY EFFORT HAS BEEN MADE TO PREVENT ERRORS, BUT THE USER MUST VERIFY ALL DIMENSIONS, MATERIALS, AND CONDITIONS BEFORE CONSTRUCTION. THE USER SHALL BE RESPONSIBLE FOR ANY CHANGES OR ADJUSTMENTS REQUIRED DURING CONSTRUCTION. NO REPRESENTATION IS MADE OR IMPLIED FOR ACCURACY.

OFFICE: 763.757.5997
FAX: 763.757.4383
ANDOVER, MINNESOTA
WWW.CROIXDESIGN.COM



BUILT BY:
SEMLER HOMES

SHEET
X
OF X
CADD FILE #
17274