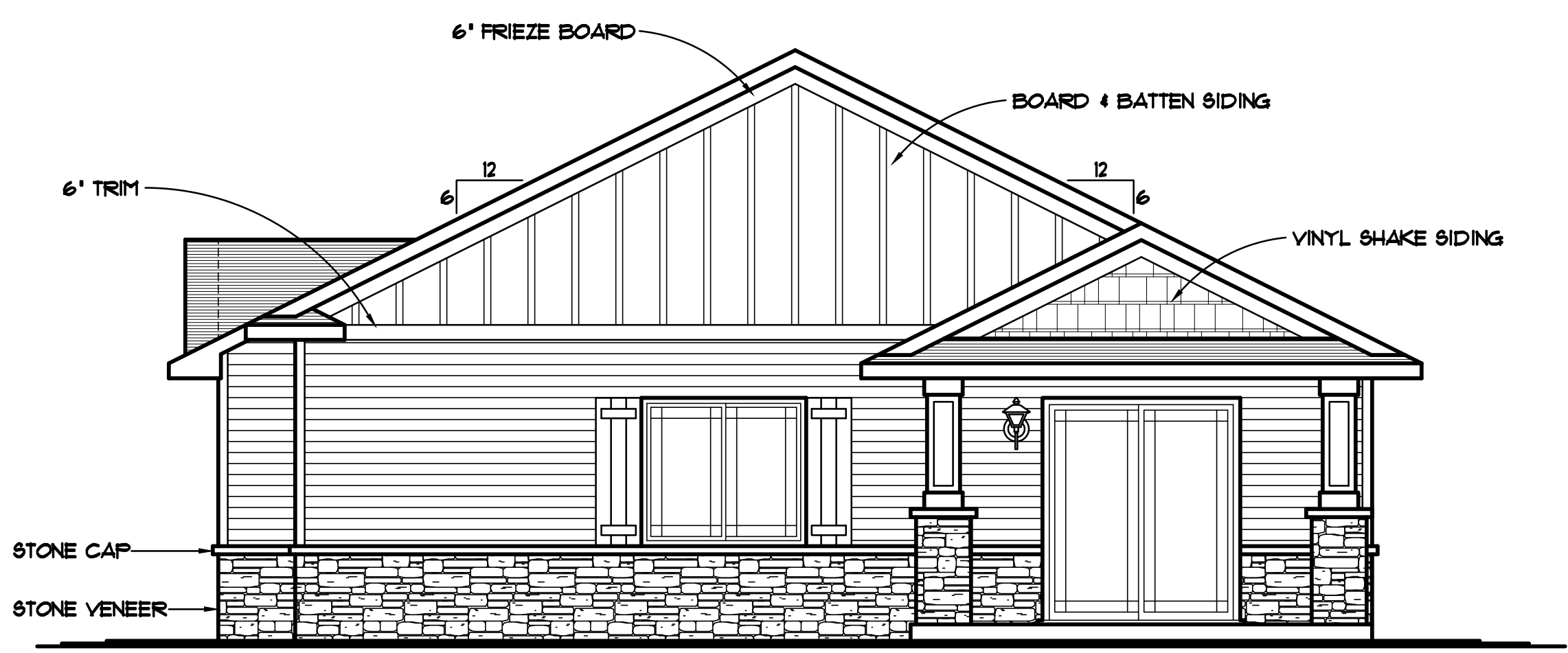
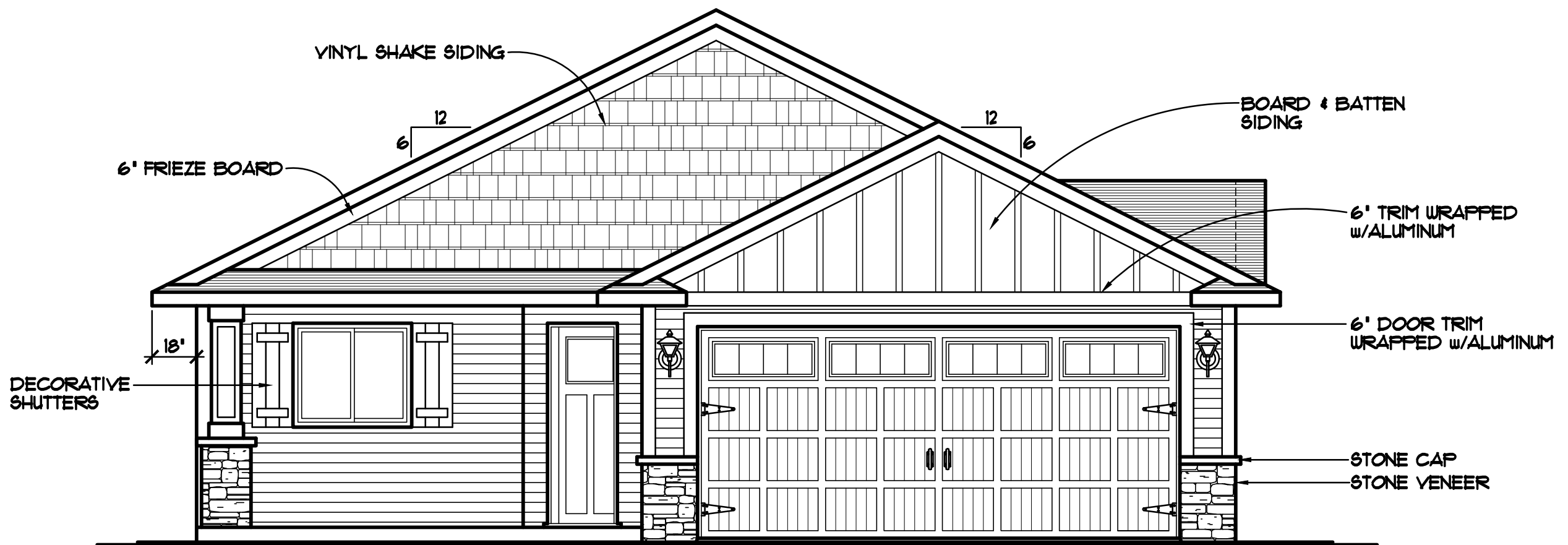


BIRD'S-EYE ROOF PLAN 1/8"=1'-0"



REAR ELEVATION 1/4"=1'-0"

- VECTOR WINDOWS SPEC'D. VERIFY ALL DOOR AND WINDOW ROUGH OPENINGS WITH SUPPLIER
- ALUMINUM SOFFITS & FASCIA
- VINYL SIDING/CORNER TRIM
- STONE VENEER AS SHOWN
- PRAIRIE STYLE WINDOW GRIDS WHERE SHOWN



FRONT ELEVATION 1/4"=1'-0"

1188 SQ. FT. MAIN LEVEL
48 SQ. FT. MECH. RM. NOT INCLUDED

16'0"x10'4"30 CARRIAGE HOUSE COLLECTION, STEEL GARAGE DOOR with 587 STOCKBRIDGE WINDOWS

THE: **ISANTI MODEL HOME**
1017 WINSOME WAY NW
LOT 82, BLOCK 3, VILLAGES ON THE RUM
ISANTI, MN

© COPYRIGHT 2014-2017 NOTICE, ALL RIGHTS RESERVED CROIX DESIGN and DRAFTING, INC.

| REVISIONS | BY |
|-----------|------|
| 143071 | N.F. |
| 16162 | N.F. |
| 17023 | N.F. |

SPECIAL NOTICE: CROIX DESIGN AND DRAFTING, INC. ACCEPTS NO RESPONSIBILITY FOR ERRORS AND/OR OMISSIONS. THESE DRAWINGS ARE DESIGN CONCEPT ONLY. EVERY EFFORT HAS BEEN MADE TO DESIGN ACCURATELY. THE OWNER, GENERAL CONTRACTOR, SUB-CONTRACTORS, AND SUPPLIERS MUST CHECK ALL DETAILS AND DIMENSIONS AND BE RESPONSIBLE FOR ANY CHANGES OR ADJUSTMENTS REQUIRED DURING ACTUAL CONSTRUCTION. NO REPRESENTATION IS MADE OR IMPLIED FOR ACCURACY.

COPYRIGHT NOTICE, ALL RIGHTS RESERVED
THESE ARCHITECTURAL PLANS AND ALL RELATED WORKS ARE PROTECTED BY UNITED STATES COPYRIGHT LAWS, AND MAY NOT BE REPRODUCED OR TRANSMITTED IN ANY FORM OR BY ANY MEANS, WITHOUT THE EXPRESS WRITTEN PERMISSION OF CROIX DESIGN AND DRAFTING, INC.

DESIGN and DRAFTING BY:

ARCHITECTURAL DESIGN and DRAFTING SERVICE • HOME PLAN SERVICE • CUSTOM HOMES • REMODELING • PHONE: 763.757.5997 • ANDOVER, MINNESOTA • WWW.CROIXDESIGN.COM

BUILT BY:

1895 STATION PARKWAY NW ANDOVER, MN 55004
LIC. # 3649
163-154-5578

| | |
|-------------|-----------|
| DRAWN | N.F. |
| CHECKED | XX |
| DATE: | 4/12/2017 |
| SCALE: | AS NOTED |
| CADD FILE # | 17131 |
| SHEET | 1 of 5 |

| REVISIONS |
|-------------------------|
| XXXXXX 0000 BY:XX |
| XXXXXX 0000 BY:XX |



LEFT ELEVATION 1/4"=1'-0"

- VECTOR WINDOWS SPEC'D. VERIFY ALL DOOR AND WINDOW ROUGH OPENINGS WITH SUPPLIER
- ALUMINUM SOFFITS & FASCIA
- VINYL SIDING/CORNER TRIM
- STONE VENEER AS SHOWN
- PRAIRIE STYLE WINDOW GRIDS WHERE SHOWN



RIGHT ELEVATION 1/4"=1'-0"

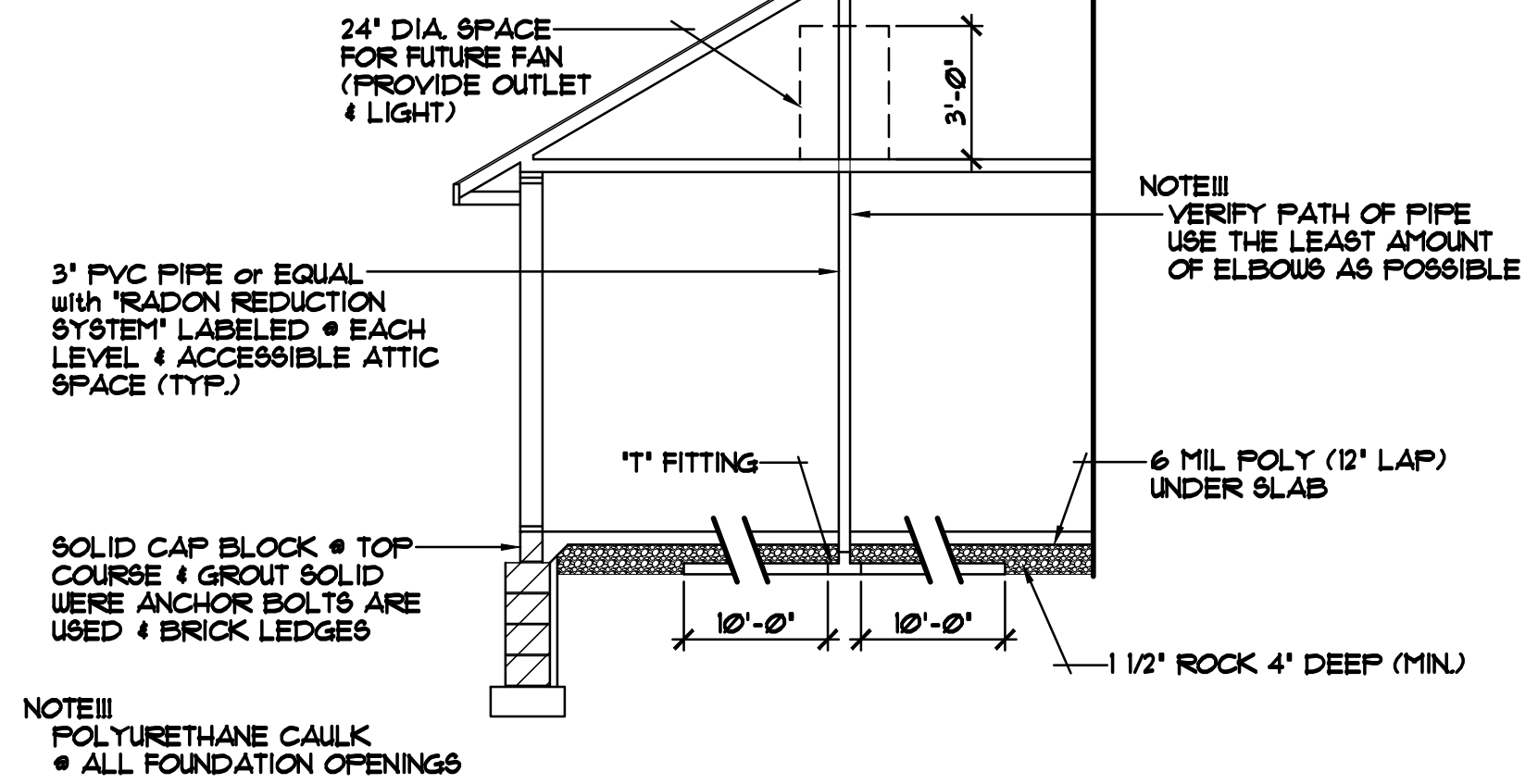
OFFICE: 763.757.5997
 FAX: 763.757.4383
 ANDOVER, MINNESOTA
 WWW.CROIXDESIGN.COM



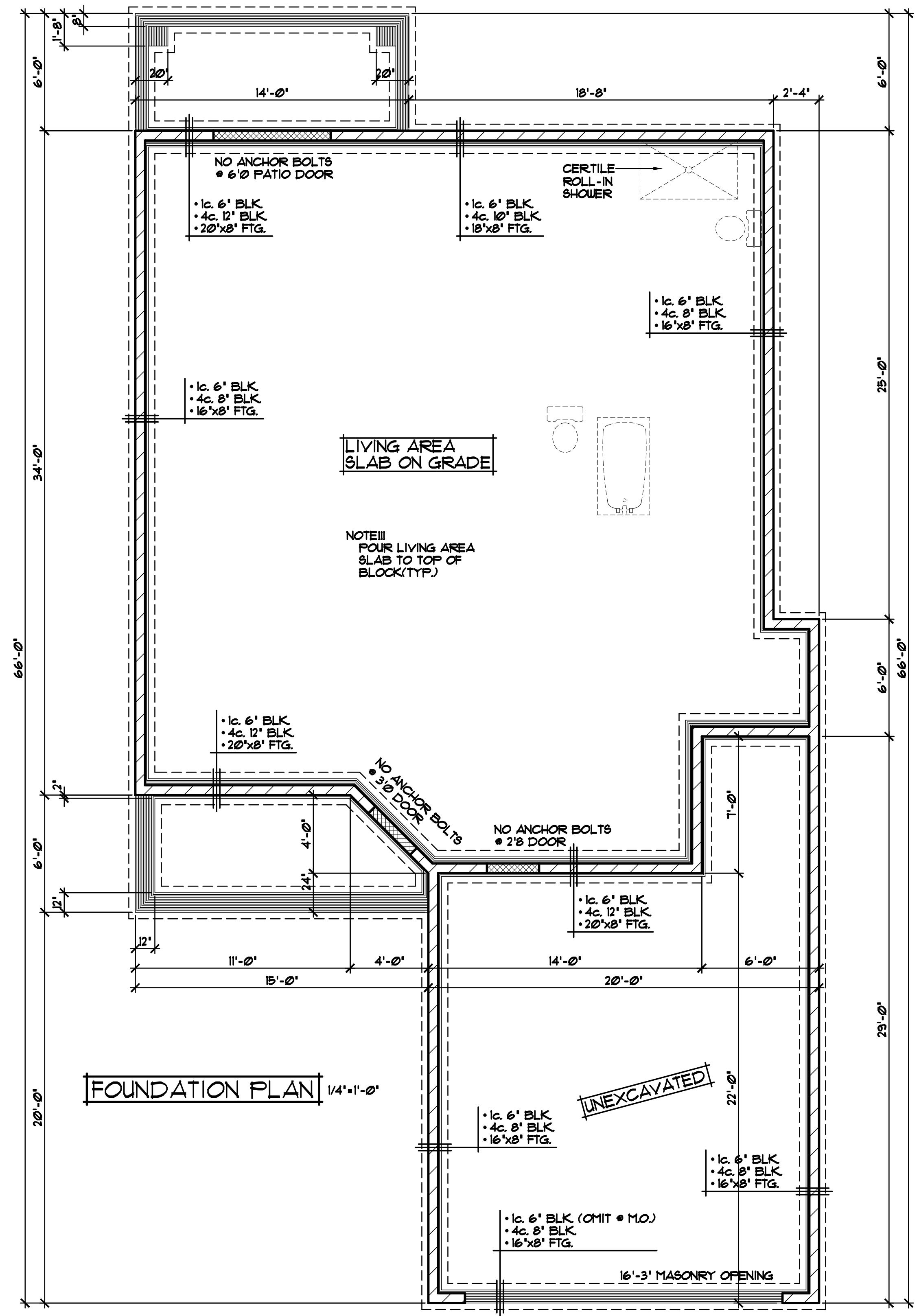
BUILT BY:
 SEMLER HOMES

SHEET
 2
 of 5
 CADD FILE #
 17131

SPECIAL NOTICE:
 CROIX DESIGN AND DRAFTING, INC. ACCEPTS NO RESPONSIBILITY FOR ERRORS AND/OR OMISSIONS. THESE DRAWINGS ARE DESIGN CONCEPT ONLY. EVERY EFFORT HAS BEEN MADE TO PREPARE ACCURATE DRAWINGS AND SPECIFICATIONS. HOWEVER, THE USER SHALL VERIFY ALL DIMENSIONS AND BE RESPONSIBLE FOR ANY CHANGES OR ADJUSTMENTS REQUIRED DURING ACTUAL CONSTRUCTION. NO REPRESENTATION IS MADE OR IMPLIED FOR ACCURACY.



ALTERNATE METHOD FOR PASSIVE RADON MITIGATION SYSTEM



ALL HEIGHT CALCULATIONS FOR FOUNDATIONS ARE BASED ON THE USE OF FULL 8" HIGH BLOCK w/ 3/8" JOINTS. IF MODULAR BLOCK IS USED, CONTRACTORS SHOULD ADJUST HEIGHTS ACCORDINGLY.

| REVISIONS |
|-------------------------|
| XXXXXX 0000 BY:XX |
| XXXXXX 0000 BY:XX |

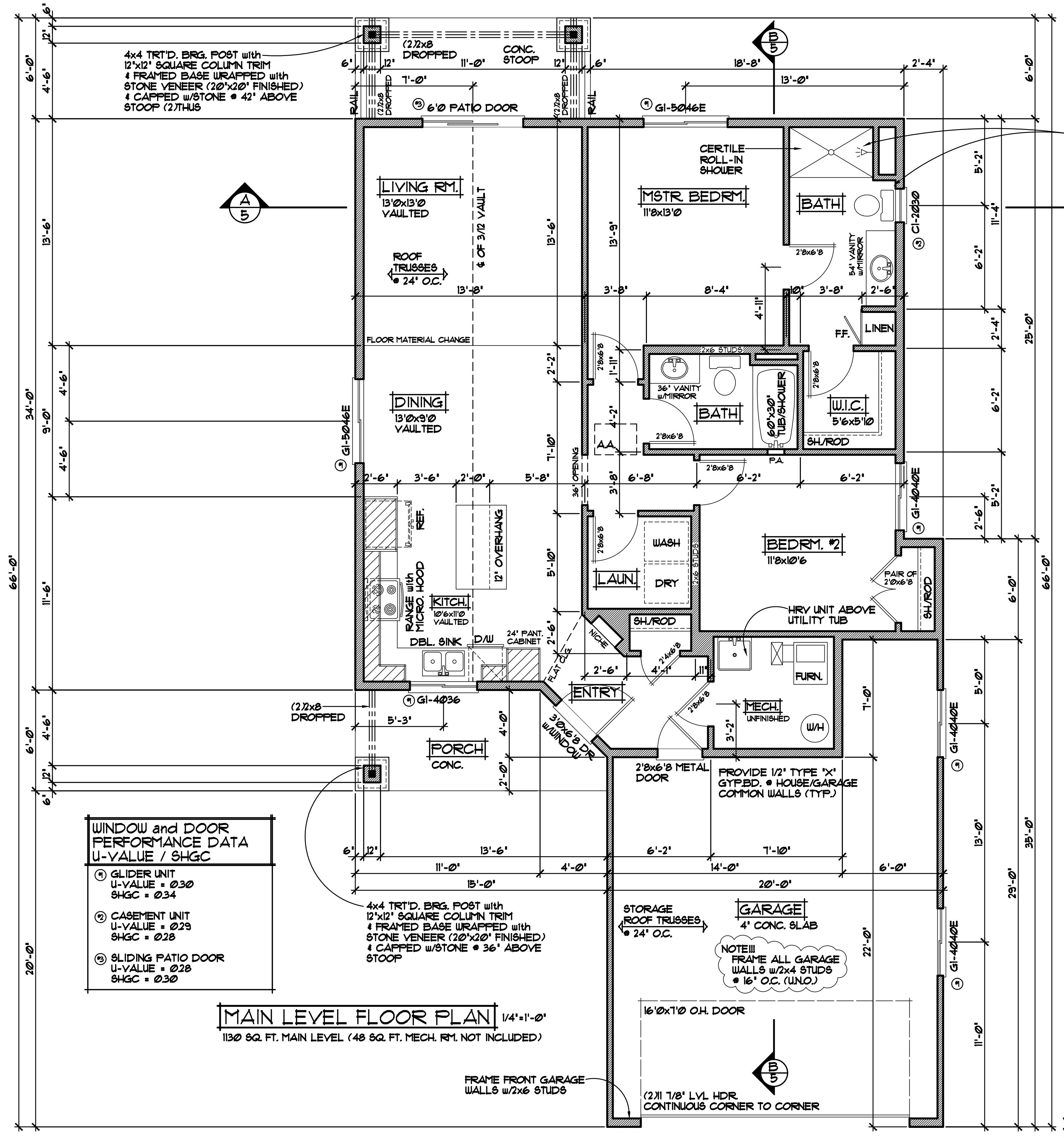
SPECIAL NOTICE:
CROIX DESIGN AND DRAFTING, INC. ACCEPTS NO RESPONSIBILITY FOR ERRORS AND/OR OMISSIONS. THESE DRAWINGS ARE DESIGN CONCEPT ONLY. EVERY EFFORT HAS BEEN MADE TO PREVENT ERRORS AND OMISSIONS. THE USER SHALL BE RESPONSIBLE FOR VERIFYING ALL DIMENSIONS AND CONDITIONS. THE USER SHALL BE RESPONSIBLE FOR ANY CHANGES OR ADJUSTMENTS REQUIRED DURING CONSTRUCTION. NO REPRESENTATION IS MADE OR IMPLIED FOR ACCURACY.

OFFICE: 763.757.5997
FAX: 763.757.4383
ANDOVER, MINNESOTA
WWW.CROIXDESIGN.COM



BUILT BY:
SEMLER HOMES

SHEET
3
OF 5
CADD FILE #
17131



| REVISIONS | |
|-----------|-------|
| XXXXXX | BY:XX |
| 0000 | |
| XXXXXX | BY:XX |
| 0000 | |

SPECIAL NOTICE:
 CROIX DESIGN AND DRAFTING, INC. ACCEPTS NO RESPONSIBILITY FOR ERRORS AND/OR OMISSIONS. THESE DRAWINGS ARE DESIGN CONCEPT ONLY. EVERY EFFORT HAS BEEN MADE TO PREPARE THESE DRAWINGS ACCURATELY. HOWEVER, THE USER SHALL BE RESPONSIBLE FOR VERIFYING ALL DIMENSIONS AND BEING RESPONSIBLE FOR ANY CHANGES OR ADJUSTMENTS REQUIRED DURING ACTUAL CONSTRUCTION. NO REPRESENTATION IS MADE OR IMPLIED FOR ACCURACY.

OFFICE: 763.757.5997
 FAX: 763.757.4383
 ANDOVER, MINNESOTA
 WWW.CROIXDESIGN.COM



BUILT BY:
SEMLER HOMES

SHEET
4
 of 5
 CADD FILE #
 17131

| REVISIONS |
|-------------------------|
| XXXXXX 0000 BY:XX |
| XXXXXX 0000 BY:XX |

ROOF CONSTRUCTION:

- PRE-MANUFACTURED ROOF TRUSSES-ENGINEERED BY SUPPLIER
- 1/150 ROOF VENT AT SOFFITS, 1/150 VENT AT RIDGE
- AIR CHUTE AT EACH TRUSS SPACE
- 7/16" ROOF SHEATHING
- 15# ROOFING FELT
- ICE & WATER MEMBRANE APPLIED 24" PAST EXTERIOR WALL
- 30 YEAR RAISED TAB SHINGLES

SOFFIT / FASCIA:

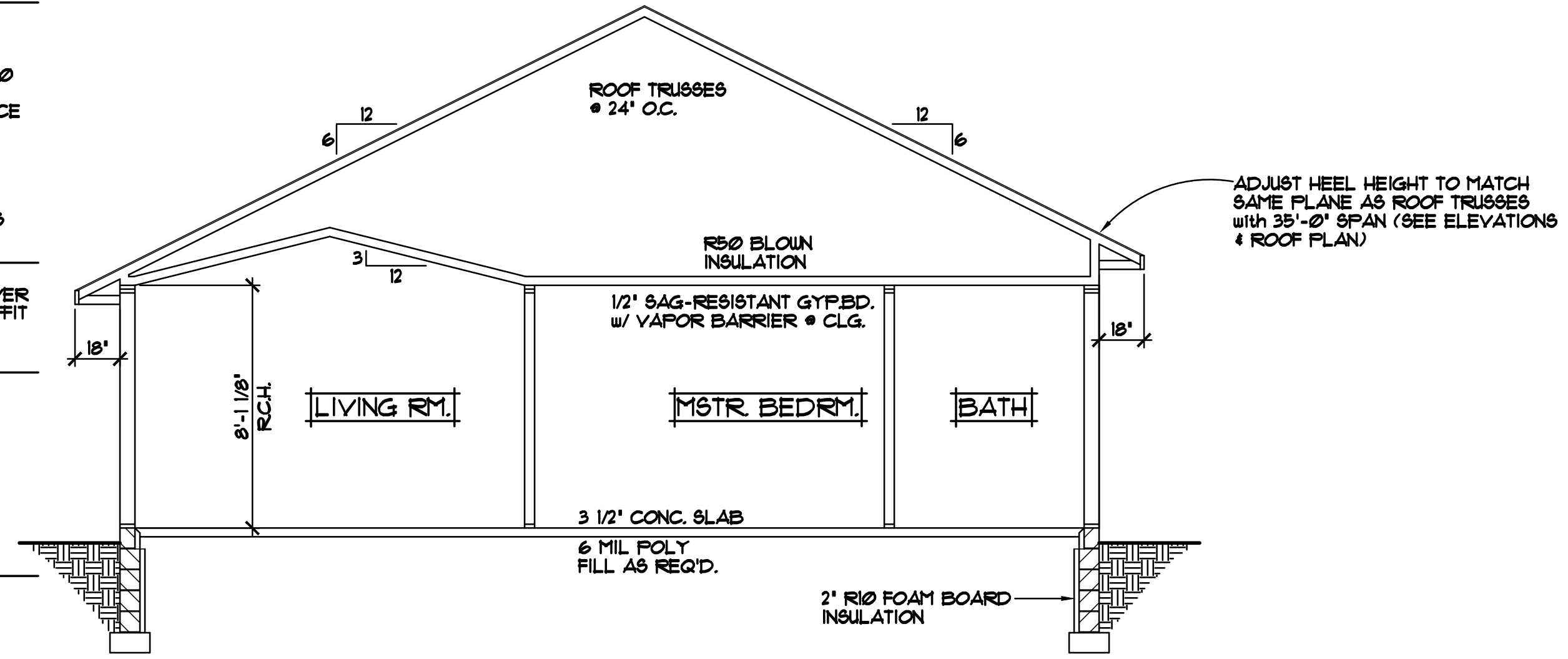
- 2x6 SUB-FASCIA
- MAINTENANCE FREE FASCIA COVER
- MAINTENANCE FREE VENTED SOFFIT

WALL CONSTRUCTION:

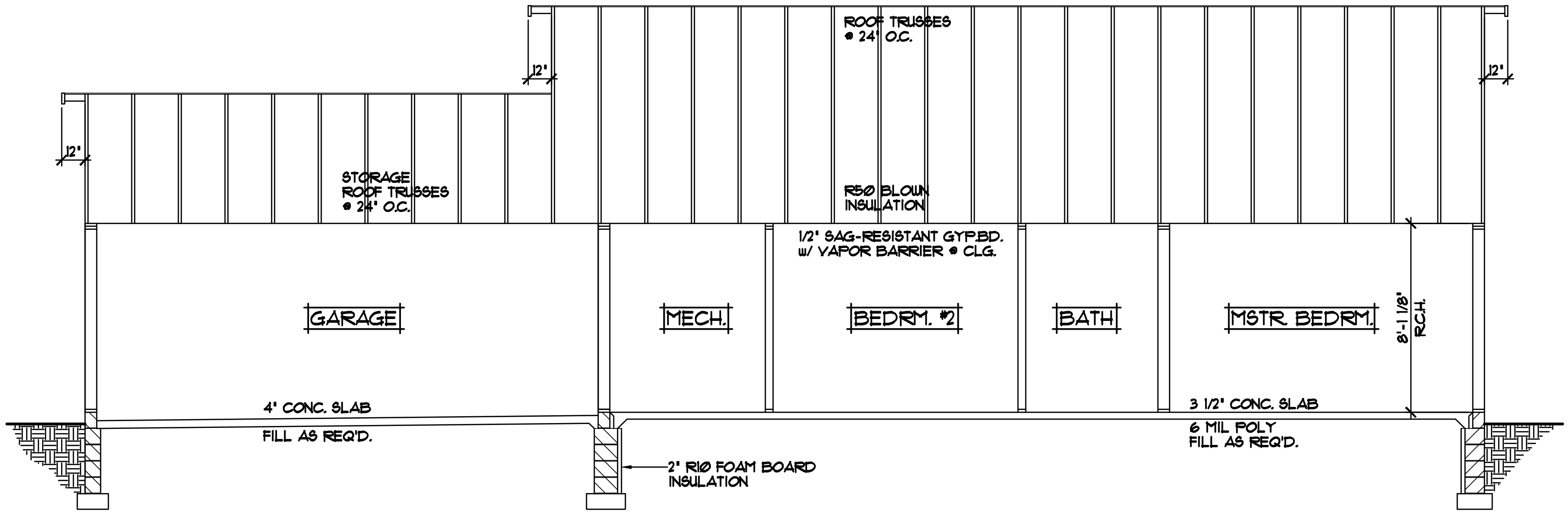
- TYVEK HOUSE WRAP
- 7/16" OSB SHEATHING
- 2x6 STUDS @ 16" O.C.
- WINDOWS PER SPEC'S.
- R-21 F.G. BATT INSULATION
- 4 MIL POLY VAPOR BARRIER
- 1/2" GYPSUM BOARD

SILL CONSTRUCTION:

- 2x6 SILL PLATE & SEALER
- 1/2" ANCHOR BOLTS @ 12" O.C.



CROSS SECTION "A" 1/4"=1'-0"



CROSS SECTION "B" 1/4"=1'-0"

ALL HEIGHT CALCULATIONS FOR FOUNDATIONS ARE BASED ON THE USE OF FULL 8" HIGH BLOCK w/ 3/8" JOINTS. IF MODULAR BLOCK IS USED, CONTRACTORS SHOULD ADJUST HEIGHTS ACCORDINGLY.

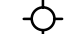


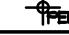
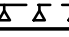
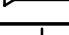
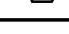
SPECIAL NOTICE:
CROIX DESIGN AND DRAFTING, INC. ACCEPTS NO RESPONSIBILITY FOR ERRORS AND/OR OMISSIONS. THESE DRAWINGS ARE DESIGN CONCEPT ONLY. EVERY EFFORT HAS BEEN MADE TO PREPARE THESE DRAWINGS ACCURATELY. HOWEVER, THE USER SHALL BE RESPONSIBLE FOR VERIFYING ALL DIMENSIONS AND BEING RESPONSIBLE FOR ANY CHANGES OR ADJUSTMENTS REQUIRED DURING ACTUAL CONSTRUCTION. NO REPRESENTATION IS MADE OR IMPLIED FOR ACCURACY.

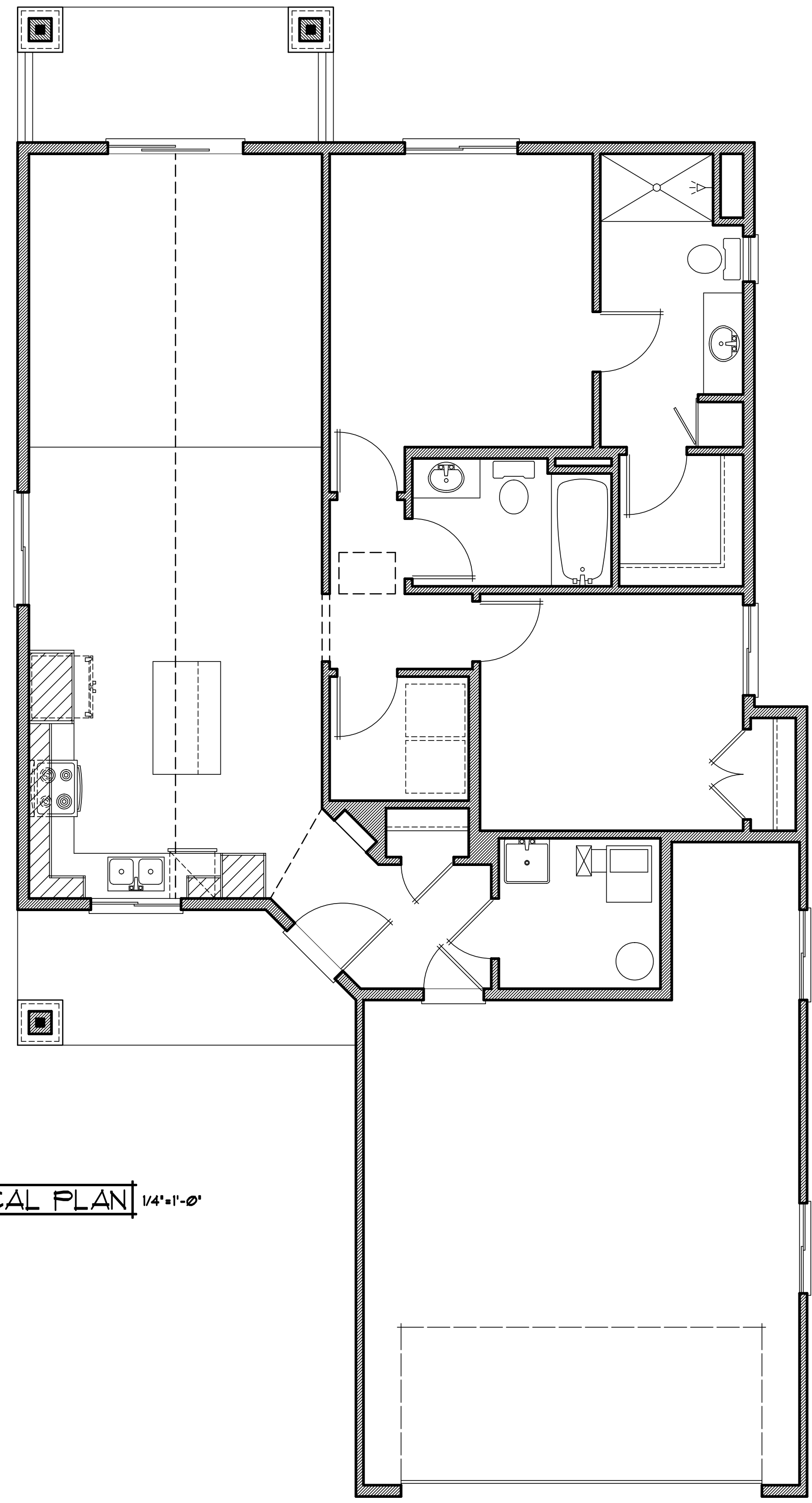
OFFICE: 763.757.5997
FAX: 763.757.4383
ANDOVER, MINNESOTA
WWW.CROIXDESIGN.COM



BUILT BY:
SEMLER HOMES

SHEET
5
OF 5
CADD FILE #
17131

| LIGHT FIXTURE SYMBOLS | |
|---|------------------------------|
|  | LIGHT - CEILING FIXTURE |
|  | LIGHT - RECESSED FIXTURE |
|  | LIGHT - RECESSED DIRECTIONAL |
|  | LIGHT - PENDANT |
|  | LIGHT - TRACK |
|  | LIGHT - FLUORESCENT |
|  | LIGHT - WALL MOUNTED |



ELECTRICAL PLAN 1/4"=1'-0"


| REVISIONS |
|-------------------------|
| XXXXXX 0000 BY:XX |
| XXXXXX 0000 BY:XX |

SPECIAL NOTICE:
CROIX DESIGN AND DRAFTING, INC. ACCEPTS NO RESPONSIBILITY FOR ERRORS AND/OR OMISSIONS. THESE DRAWINGS ARE DESIGN CONCEPT ONLY. EVERY EFFORT HAS BEEN MADE TO PREVENT ERRORS, BUT THE USER MUST VERIFY ALL DIMENSIONS, MATERIALS, AND CONDITIONS BEFORE CONSTRUCTION. THE USER SHALL BE RESPONSIBLE FOR OBTAINING ALL NECESSARY PERMITS AND REGULATORY APPROVALS. THE USER SHALL BE RESPONSIBLE FOR ANY CHANGES OR ADJUSTMENTS REQUIRED DURING CONSTRUCTION. NO REPRESENTATION IS MADE OR IMPLIED FOR ACCURACY.

OFFICE: 763.757.5997
FAX: 763.757.4383
ANDOVER, MINNESOTA
WWW.CROIXDESIGN.COM



BUILT BY:
SEMLER HOMES

SHEET

of X
CADD FILE #
17131